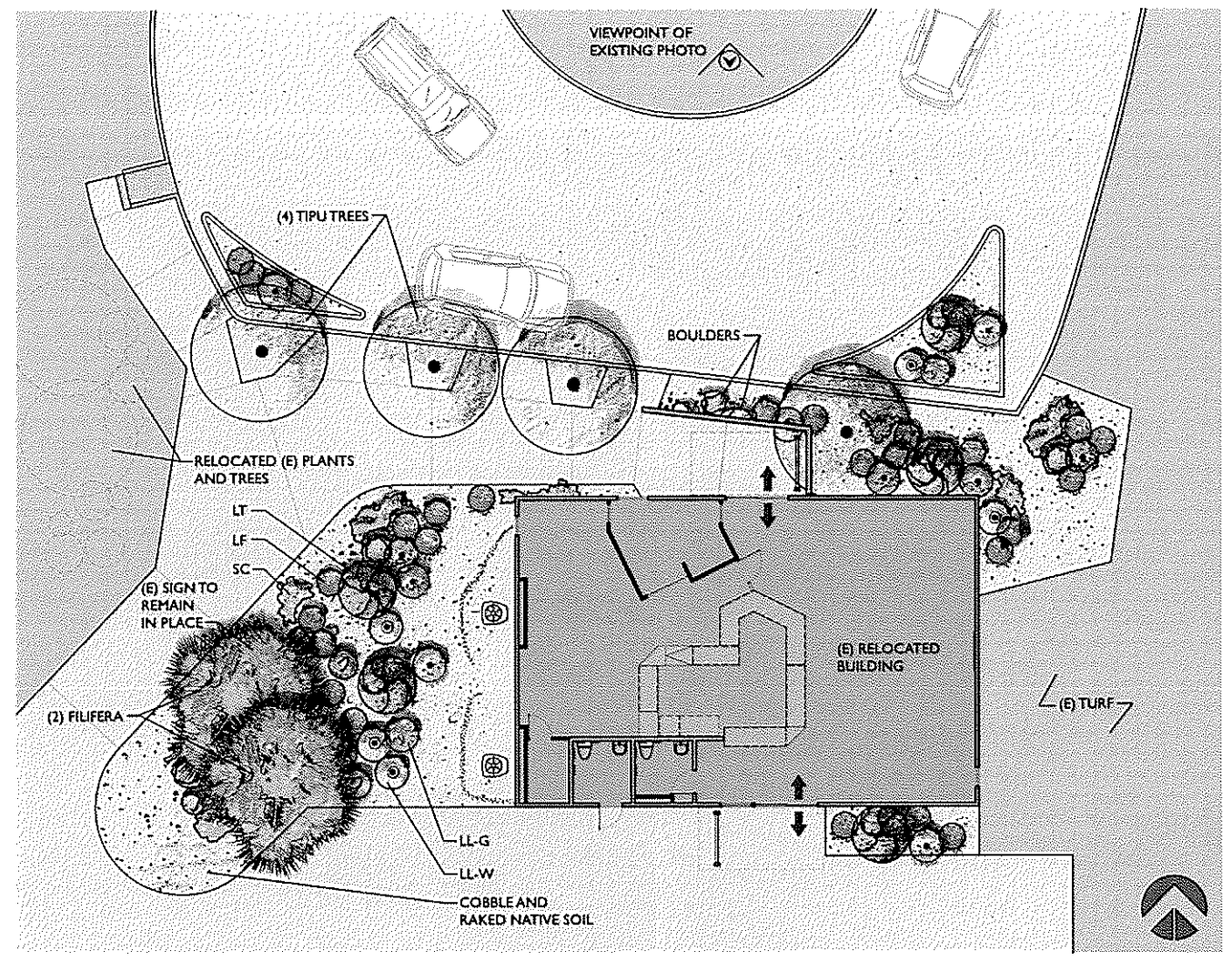


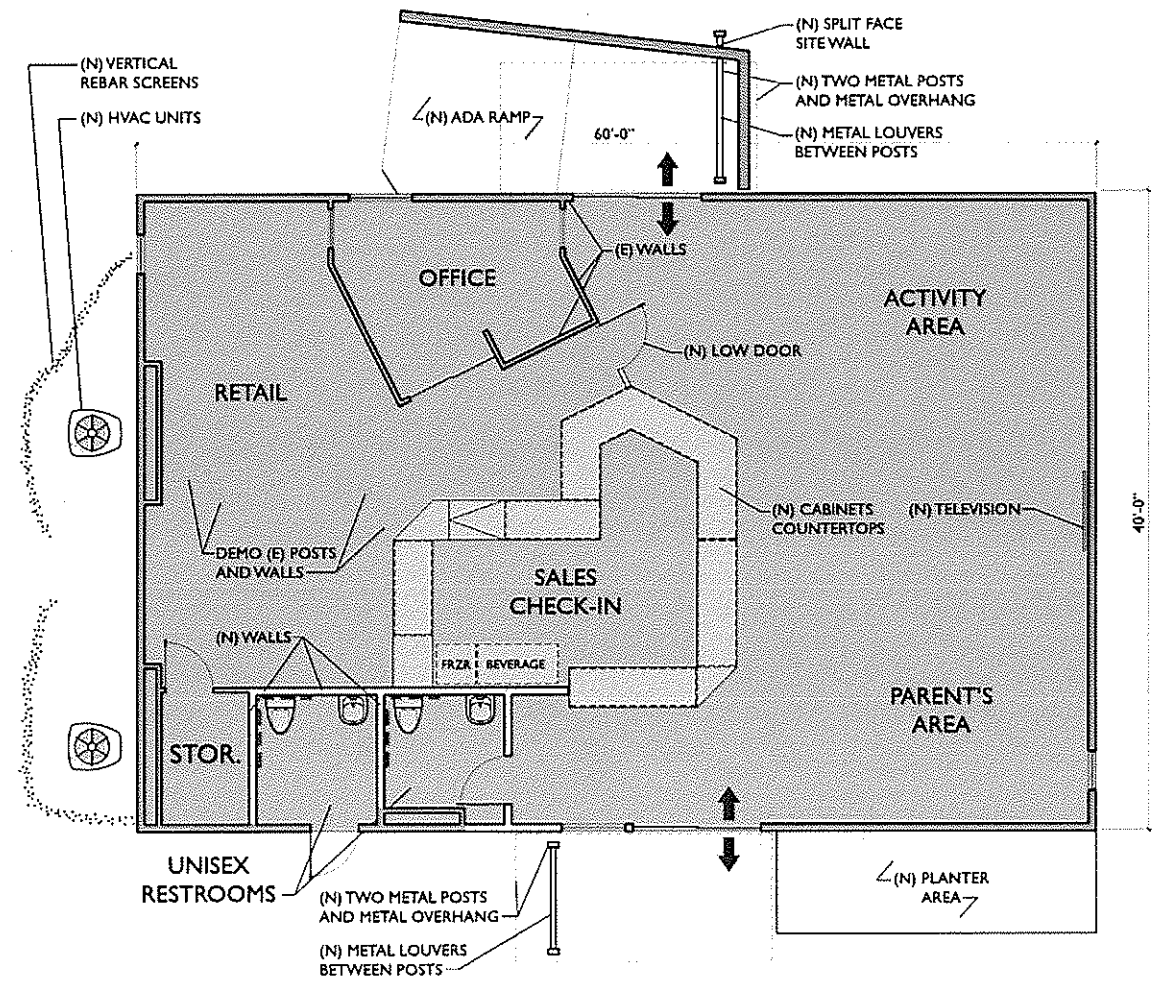
TREES	
TIPU TREE	TIPUANA TIPU TREE
FILIFERA	WASHINGTONIA FILIFERA
SHRUBS	
SC	SANTOLINA CHAMAECYPARISSUS
	LAVENDER COTTON 'NANA'
LF	LEUCOPHYLLUM FRUTESCENS
	RAIN CLOUD
LL-G	LEUCOPHYLLUM LAEVIGATUM
	GREEN CLOUD
LL-W	LEUCOPHYLLUM LAEVIGATUM
	WHITE CLOUD
LT	LARREA TRIDENTATA
	CREOSOTE BUSH

PLANT LEGEND



SITE & LANDSCAPE PLAN

SCALE: 1" = 10'-0"



FLOOR PLAN

SCALE: 3/16" = 1'-0"



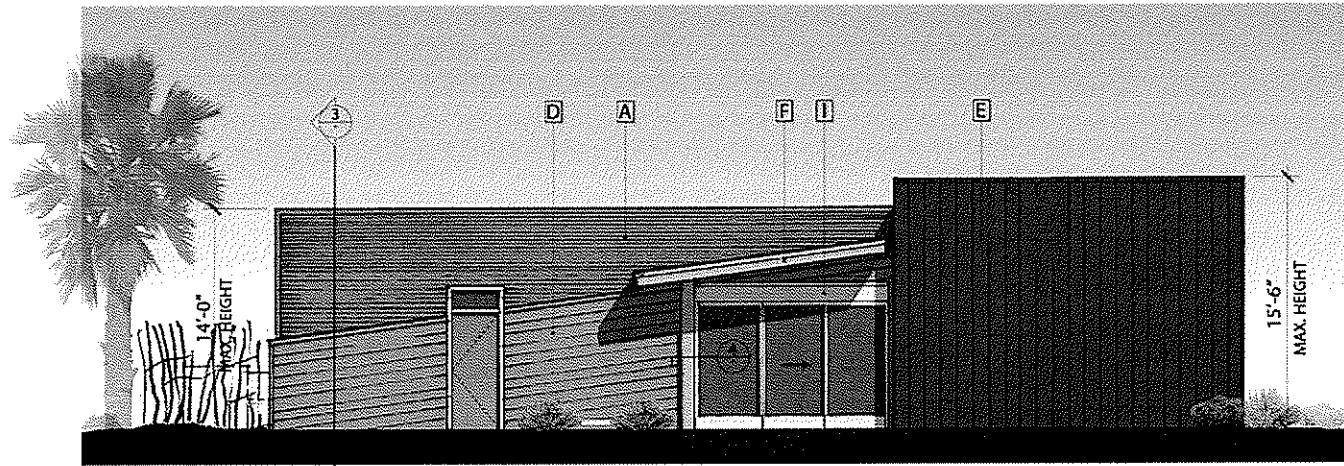
EXISTING SITE PHOTO

Site Plan & Existing Site Photo.....1

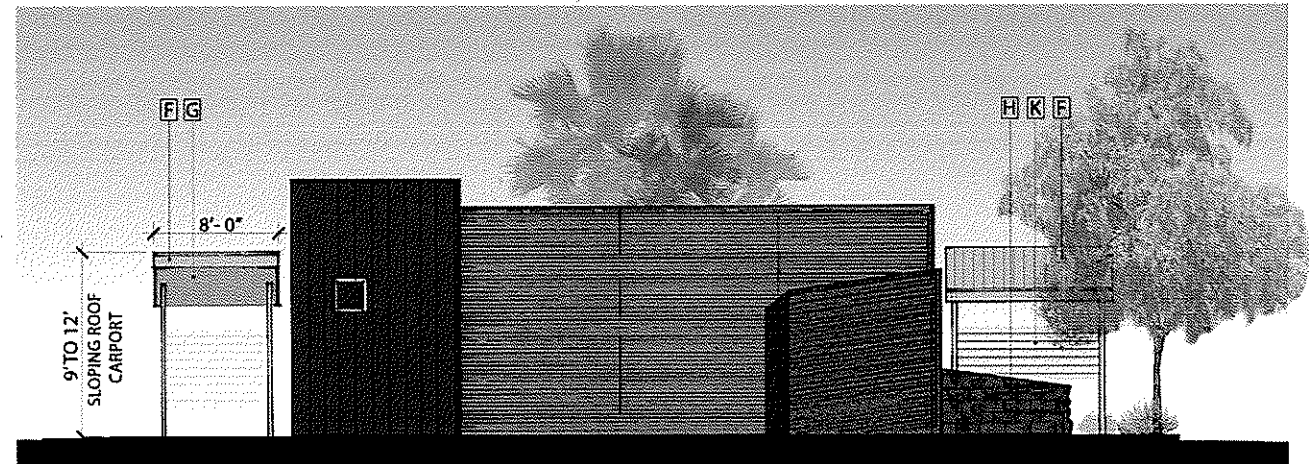
Exterior Elevations & Wall Details2

Civil Plan3

SHEET INDEX



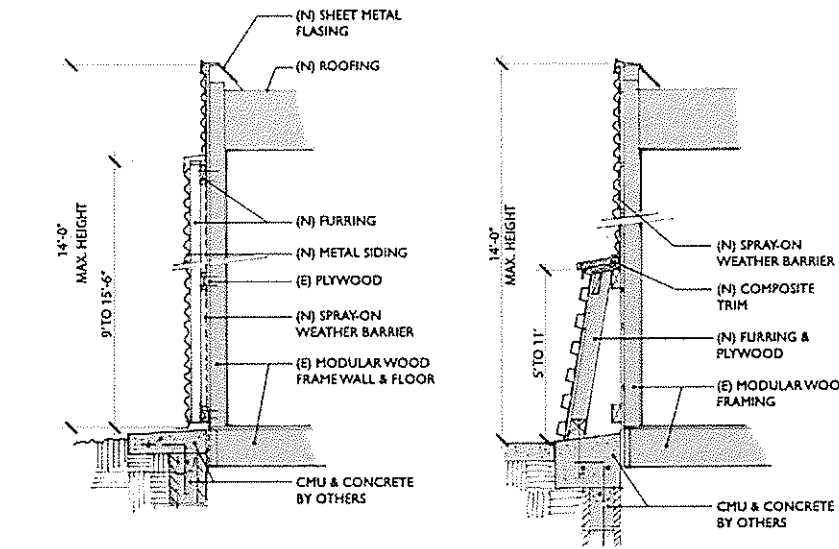
SOUTH ELEVATION (from Skate Park)



EAST ELEVATION (from High School)

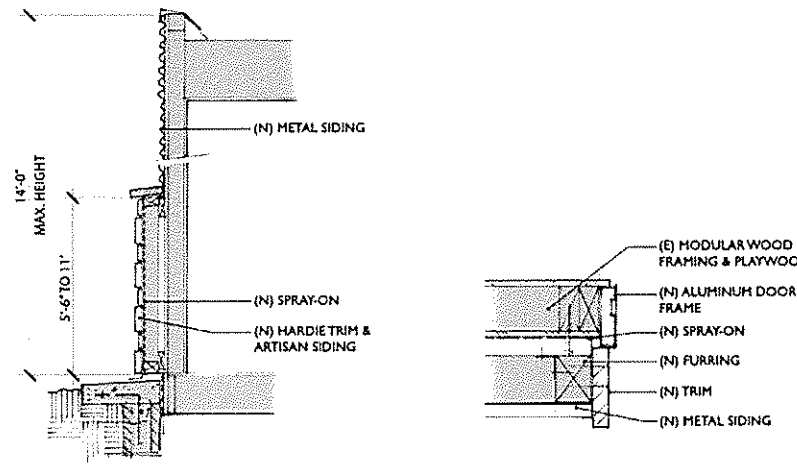


WEST ELEVATION (from Swim Center)



① Nu-Wave Metal Siding Detail

② Corrugated Metal Wall Detail



③ Hardie Trim & Siding Detail

④ Aluminum Storefront Wall Detail

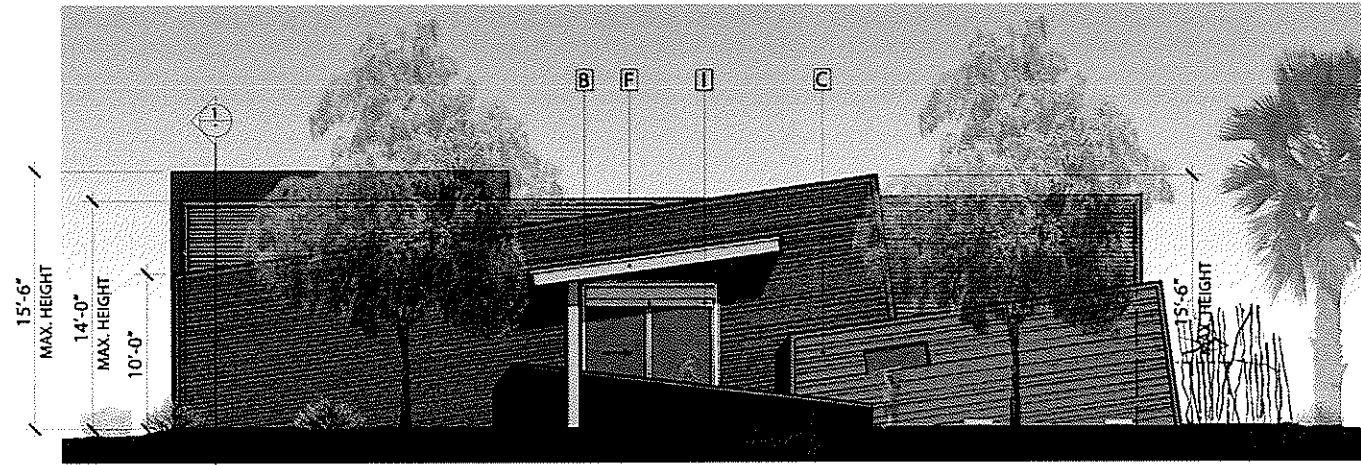
DETAILS

NTS

KEYNOTES

A	Field Metal AEP Span Nu-Wave Metal Cool Metallic Champagne
B	Metal Wrap 1 AEP Span IronOx Nu-Wave Metal Natural Iron oxide finish
C	Metal Wrap 2 AEP Span Corrugated Metal DE6160 Fall Harvest paint
D	James Hardie Siding Smooth Finish DE6235 Northgate Green paint
E	James Hardie Siding Smooth Finish Traditional Red
F	Carport Post Galvanized Steel SW 7732 Lemongrass
G	Carport Underside Galvanized Steel SW 7733 Bamboo Shoot
H	Split face CMU guard wall at ramped entry
I	Existing aluminum storefront to remain
J	Vertical rebar screen
K	Horizontal Louvers

See Material Board for items A-G



NORTH ELEVATION (from street)

LEGEND

- 4" PCC SIDEWALK
- 3" AC PAVEMENT OVER 6" MISC. BASE
- AC PAVEMENT REMOVAL AND DISPOSAL
- DESIGNATES LANDSCAPE AREA
- DESIGNATES HANDICAP ROUTE

CONSTRUCTION NOTES

(GRADING PLANS)

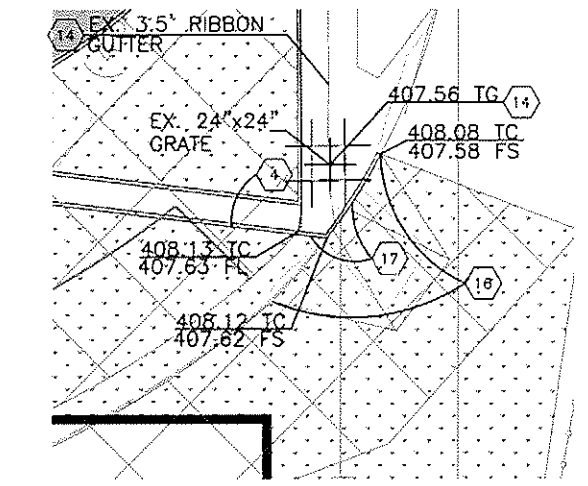
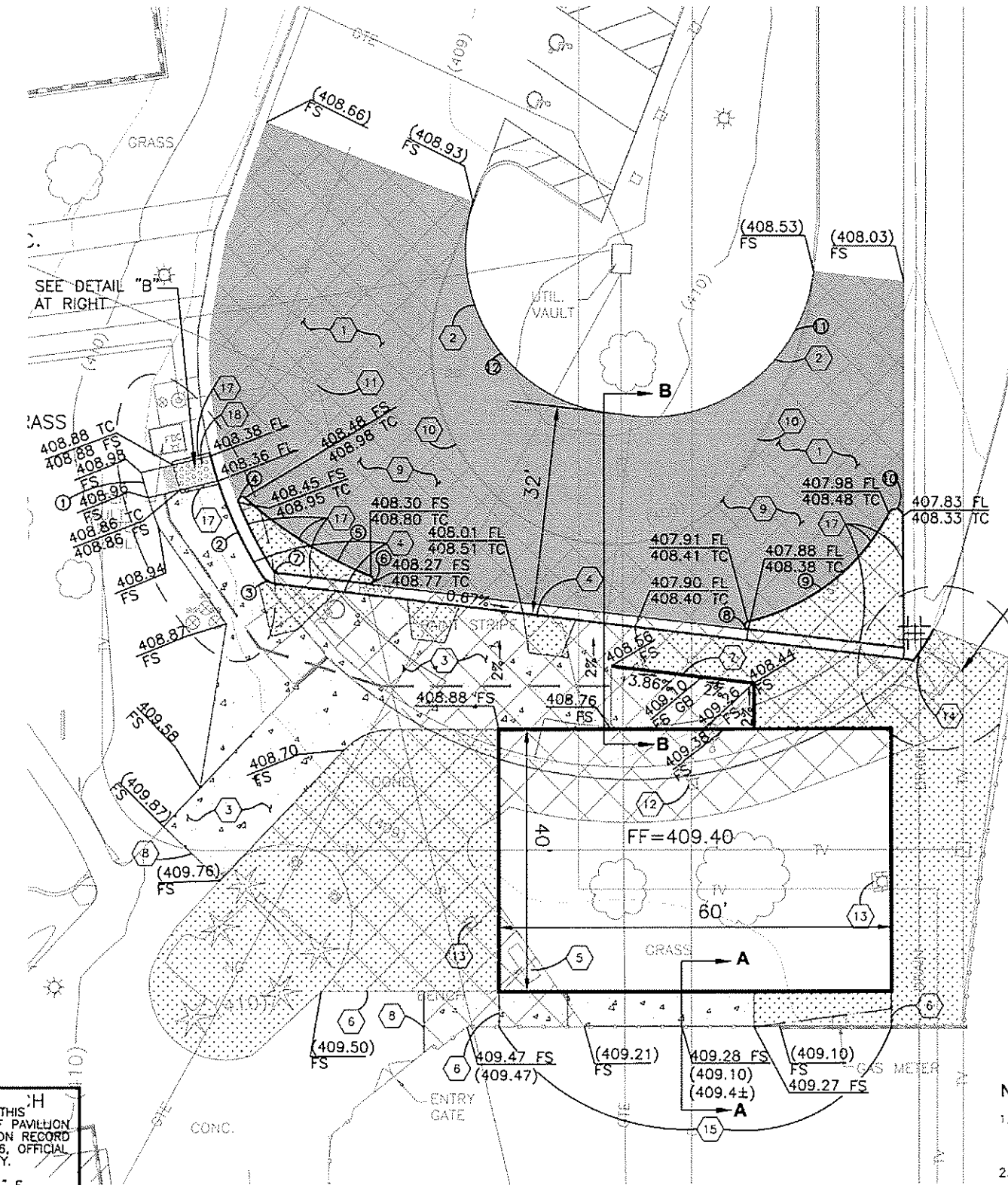
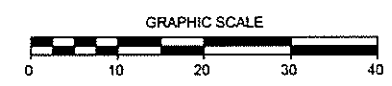
- 1 CONSTRUCT X" AC PAVING OVER X" MISC. BASE
- 2 CONSTRUCT 6" CURB PER CPS STD 200 TYPE A1
- 3 CONSTRUCT SIDEWALK AND MISC. CONC., 4" PCC OVER COMPACTED NATIVE MATERIAL
- 4 CONSTRUCT 6" CURB AND GUTTER PER CPS STD 200 TYPE A3
- 5 RELOCATE CONC. BENCH TO A LOCATION PER THE DIRECTION OF THE CITY ENGINEER
- 6 INSTALL 6' HIGH WROUGHT IRON FENCE USING SALVAGED MATERIALS FROM THIS SITE
- 7 CONSTRUCT MASONRY RETAINING WALL WITH HAND RAIL
- 8 SAWCUT EXISTING CONCRETE
- 9 REMOVE AND DISPOSE OF EX. AC PAVING (SEE DEMOLITION PLAN)
- 10 REMOVE AND DISPOSE OF EX. CURB (SEE DEMOLITION PLAN)
- 11 ADJUST SEWER MANHOLE TO GRADE
- 12 RELOCATE NO PARKING SIGN TO LOCATION OF NEW CURB AND GUTTER
- 13 RELOCATE AREA LIGHT PER DIRECTION OF THE CITY ENGINEER
- 14 PROTECT FACILITY IN PLACE
- 15 REMOVE AND SALVAGE WROUGHT IRON FENCE TO BE USED IN DESIGNATED AREAS
- 16 REMOVE EXISTING HANDICAP RAMP
- 17 INSTALL 6" CURB PER CPS STD 200 TYPE A1
- 18 INSTALL TRUNCATED DOMES PER CPS STD 212-A NOTE NO. 4

CURVE DATA TABLE

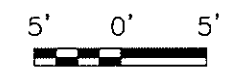
NUMBER	DELTA	RADIUS	LENGTH
1	6°38'27"	75.49'	8.75'
2	18°08'56"	64.29'	20.36'
3	51°03'38"	3.00'	2.67'
4	153°15'31"	0.70'	1.87'
5	19°18'59"	67.52'	22.76'
6	164°28'58"	0.70'	2.01'
7	50°58'03"	1.00'	0.89'
8	160°06'39"	0.70'	1.96'
9	49°14'38"	32.68'	28.09'
10	151°53'28"	1.20'	3.18'
11	90°23'58"	25.00'	39.44'
12	104°02'05"	25.00'	45.39'



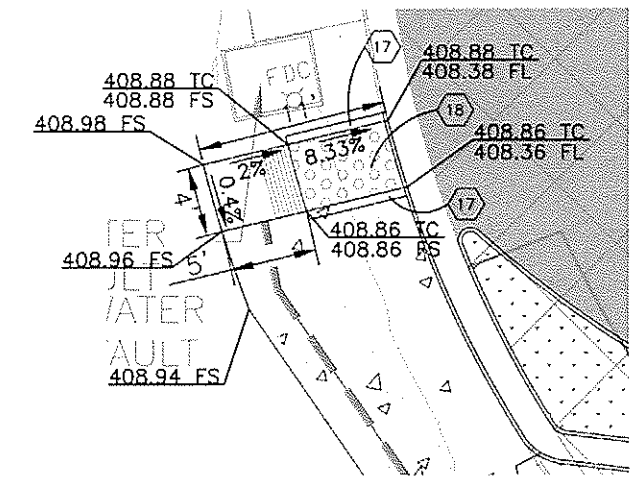
SCALE 1"=10'



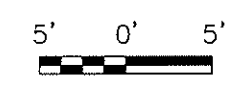
DETAIL "A"



SEE DETAIL "A" ABOVE



DETAIL "B"



NOTE:

1. ALL UNDERGROUND UTILITIES BENEATH THE BUILDING TO BE RELOCATED BY THE UTILITY CO. PRIOR TO THE BEGINNING OF CONSTRUCTION.
2. THE RETAINING WALL WILL BE BY SEPARATE PLAN AND PERMIT

3

Don't Dig...Until You Call U.S.A. Toll Free 1-800-227-2600 for the location of buried utility lines. Don't disrupt vital services. TWO WORKING DAYS BEFORE YOU DIG.

BENCH MARK:
CITY OF PALM SPRINGS BM #13-22
A 2" C.P.S. BRASS CAP SET IN MONUMENT WELL AT THE INTERSECTION OF RAMON ROAD AND CERRITOS DRIVE.
ELEVATION: 405.710'

BASIS OF BEARING:
THE BASIS OF BEARINGS FOR THIS SURVEY IS THE CENTERLINE OF PAVILION (CERRITOS DRIVE) AS SHOWN ON RECORD OF SURVEY BOOK 57, PAGE 76, OFFICIAL RECORDS OF RIVERSIDE COUNTY.
SAID LINE BEARS N 00°02'26.6" E.

ENGINEERING RESOURCES
OF RIVERSIDE CALIFORNIA, INC.
3550 E. Florida Avenue, Suite D
Hemet, California 92544
(951) 765-6622
Fax (951) 765-6621

PREPARED UNDER THE SUPERVISION OF:
JOHN M. BRIDON
REGISTERED CIVIL ENGINEER NO. 41836

DATE: _____



CITY OF PALM SPRINGS
PUBLIC WORKS DEPARTMENT

APPROVED BY _____
CITY ENGINEER

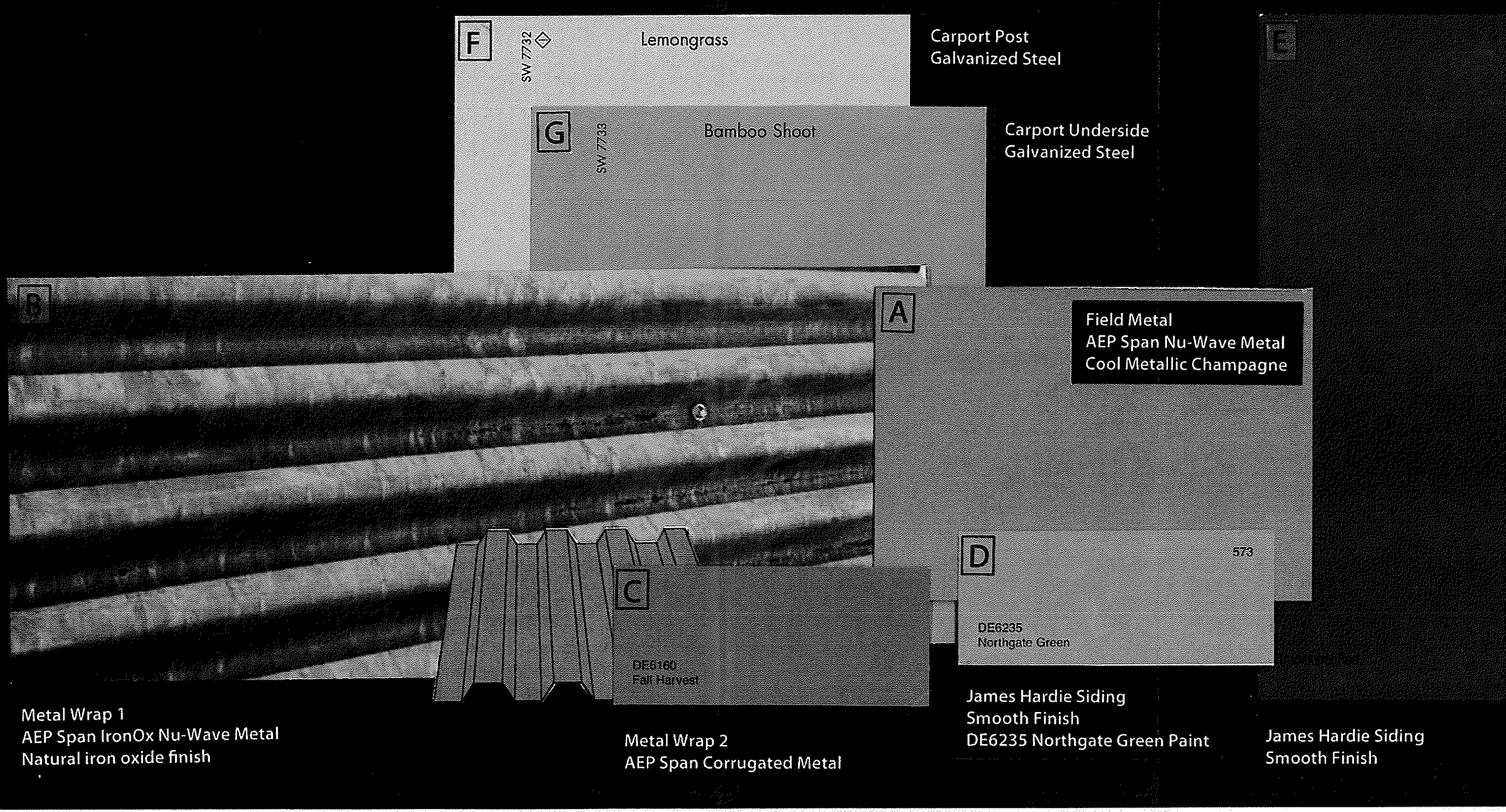
R.C.E. No. 28931

DATE _____

REF.	DESCRIPTION	APPR.	DATE

PALM SPRINGS
PALM SPRING SKATE PARK
PRECISE GRADING PLAN

PROJECT NO. _____
DRAWING NO. _____
SHEET NO. **2** OF **4**



PALM SPRINGS SKATE PARK
CITY OF PALM SPRINGS

Material Board