

PALM SPRINGS ART MUSEUM

MUSEUM DRIVE

STAGE

BLOCK E  
EVENT SPACE

PARKING  
GARAGE

PARKING  
GARAGE

BLOCK D  
FUTURE  
DEVELOPMENT

BLOCK F  
FUTURE  
DEVELOPMENT

BLOCK G  
FUTURE  
DEVELOPMENT

BELARDO ROAD

TAHQUITZ CANYON WAY

C-1  
(6 STORY)  
W/ RESTAURANT, BAR AND POOL  
(ON ROOF)

B-1  
(2 STORY)

MARKET STREET

(2 STORY)

(4 STORY)

BLOCK C

(1 STORY)

(3 STORY)

BLOCK B

(2 STORY)

(1 STORY)

BLOCK A

(1 STORY)

HYATT  
HOTEL

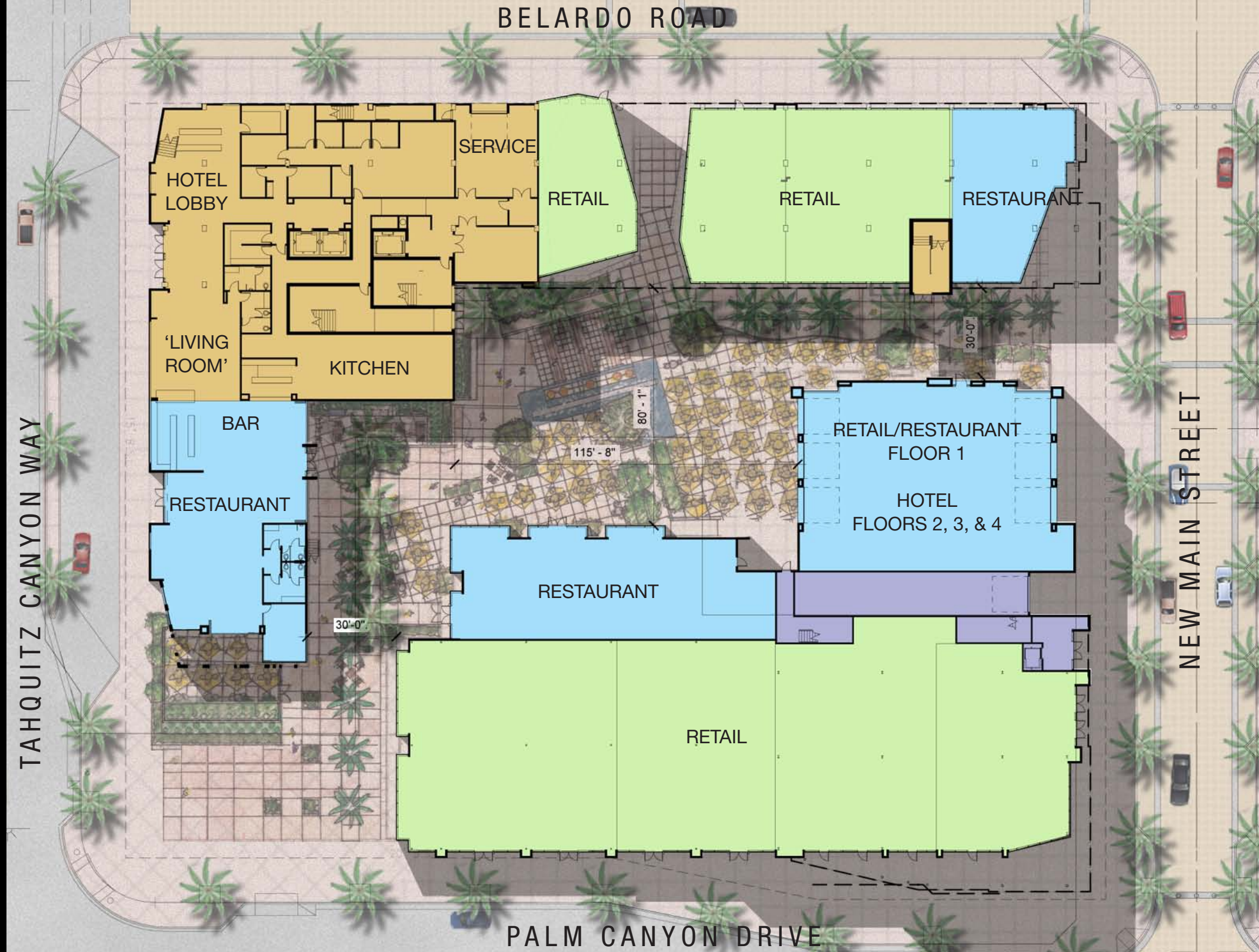
ANDREAS ROAD

NEW MAIN STREET

PALM CANYON DRIVE

OVERALL SITE PLAN





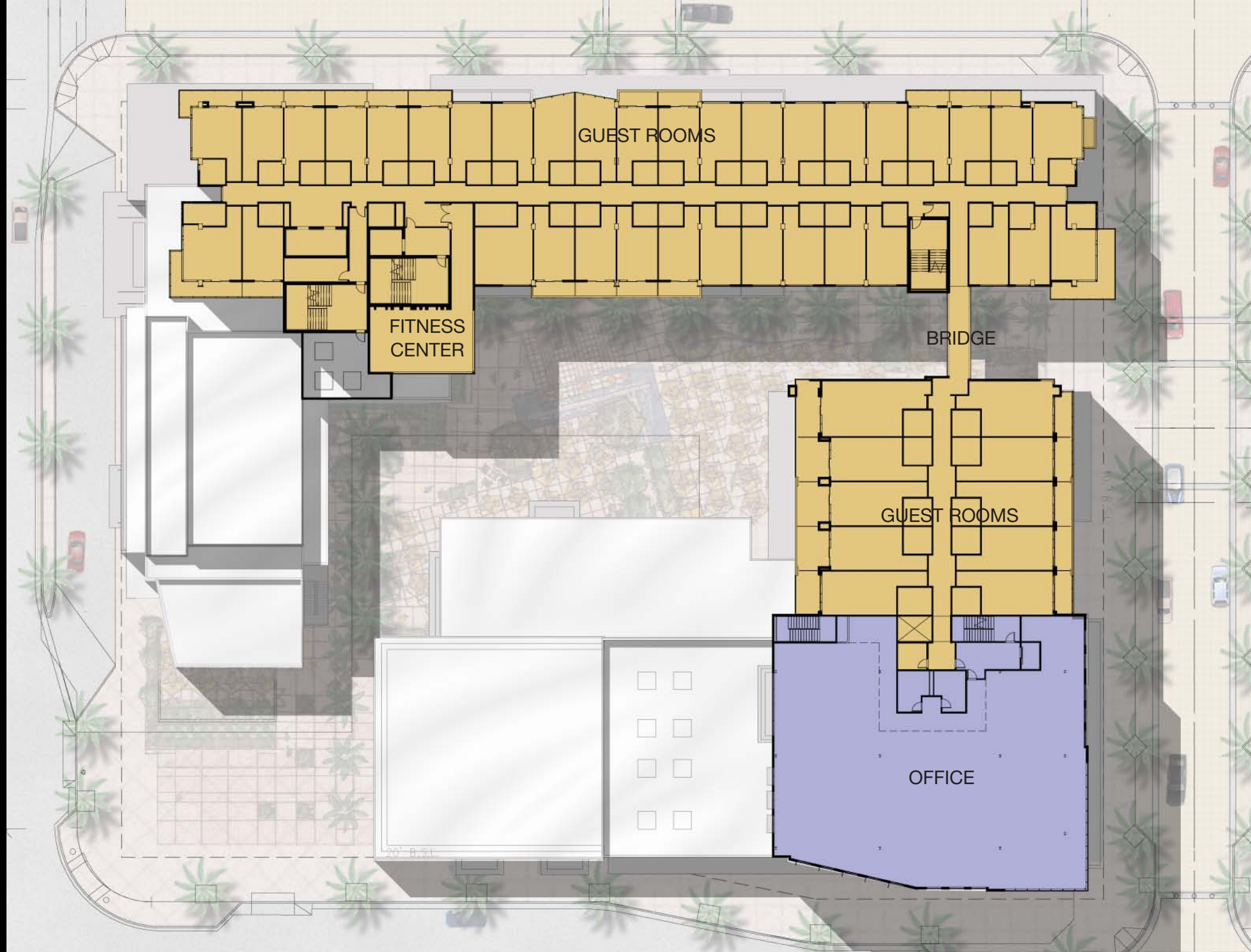
BLOCK 'C' STREET LEVEL FLOOR PLAN



BLOCK 'C' 2nd LEVEL FLOOR PLAN

11.28.2012

Allen+Philp  
architects+interiors



BLOCK 'C' 3rd LEVEL FLOOR PLAN

11.28.2012

Allen+Philp  
architects+interiors



BLOCK 'C' ROOF PLAN

11.28.2012

Allen+Philp  
architects+interiors











BLOCK 'C' SCENE ONE

**WESSMAN**

DOWNTOWN PALM SPRINGS

11.28.2012

**Allen+Philp**  
architects+interiors





VIEW FROM MARKET STREET REVISED

**WESSMAN**

DOWNTOWN PALM SPRINGS

11.28.2012

**Allen+ Philp**  
architects • interiors



BLOCK 'C' SCENE TWO





BLOCK 'C' SECTION LOOKING NORTH



BLOCK 'C' COURTYARD ROOF SKETCH

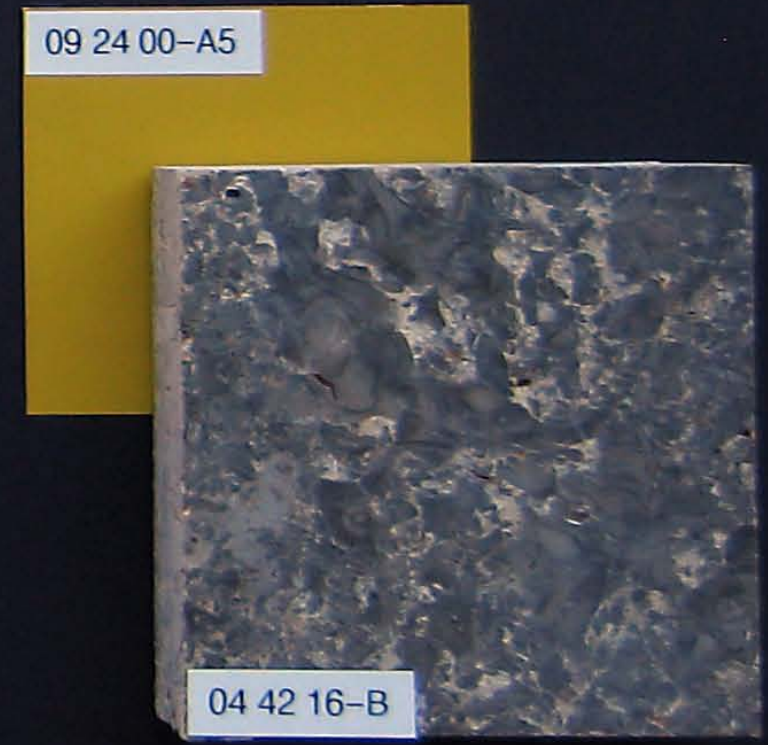
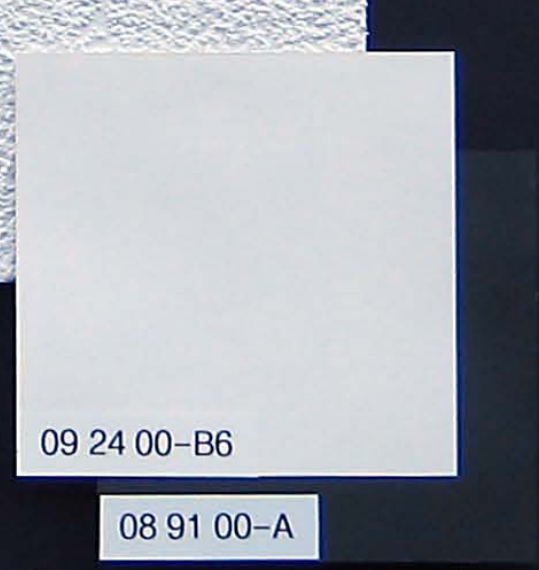
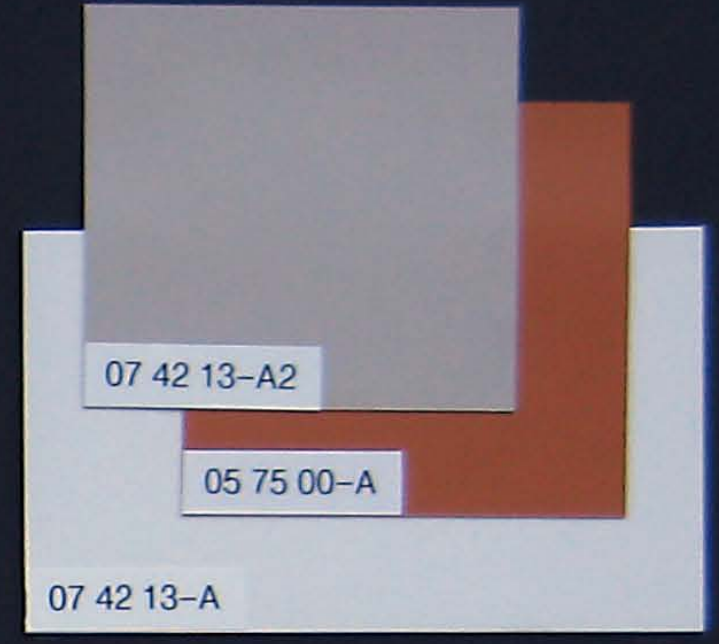
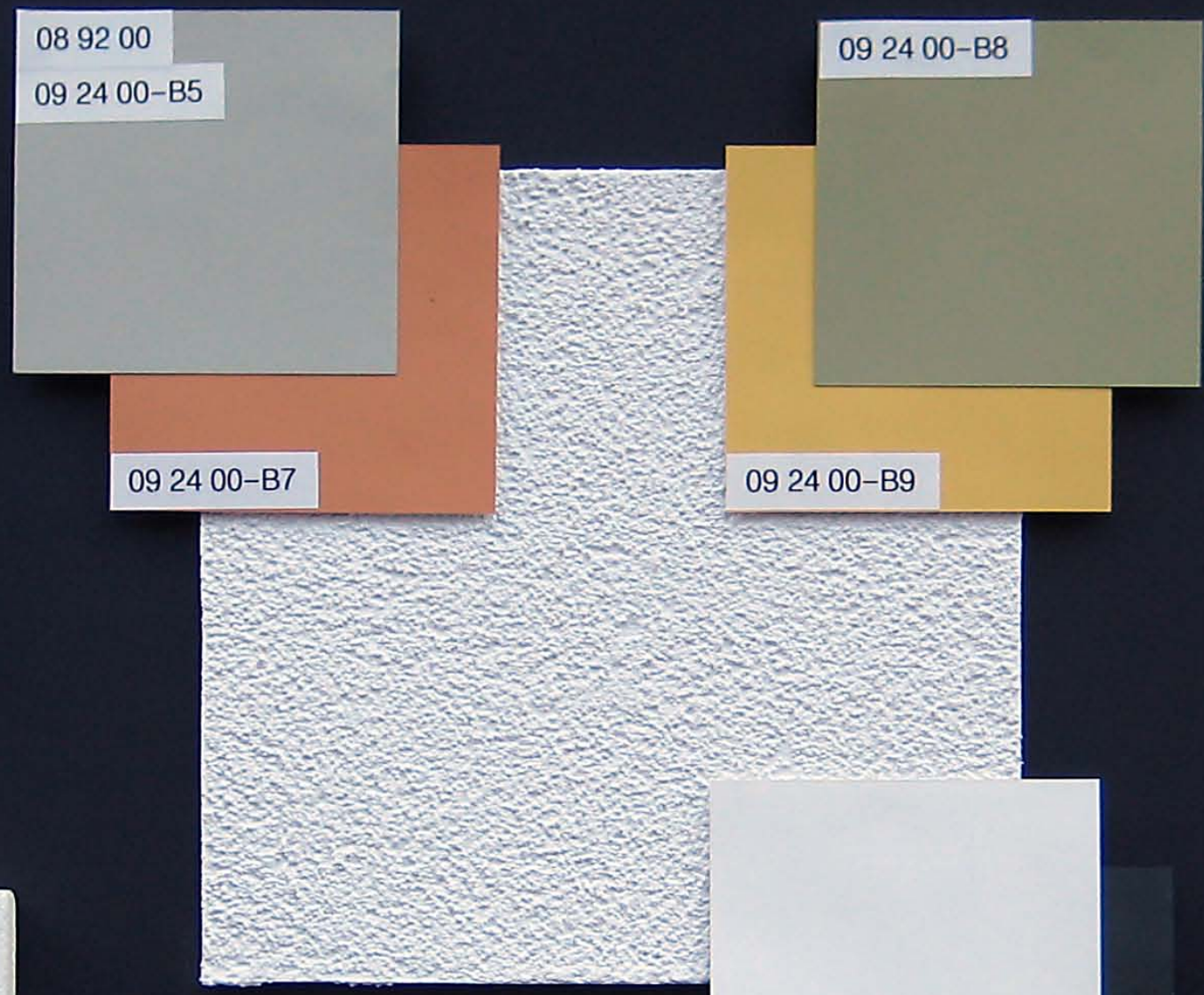
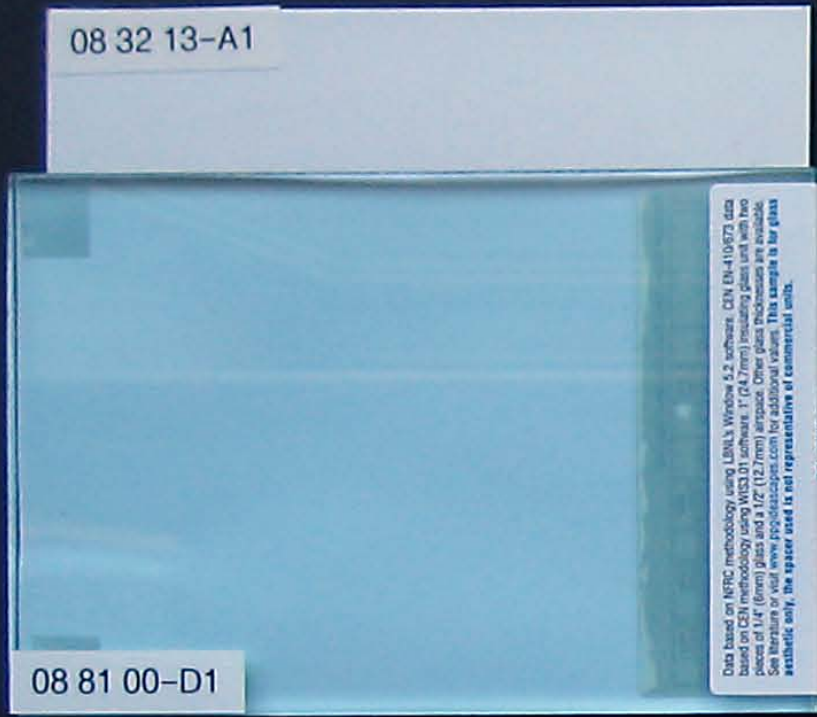
11.28.2012

Allen+Philp  
architects+interiors

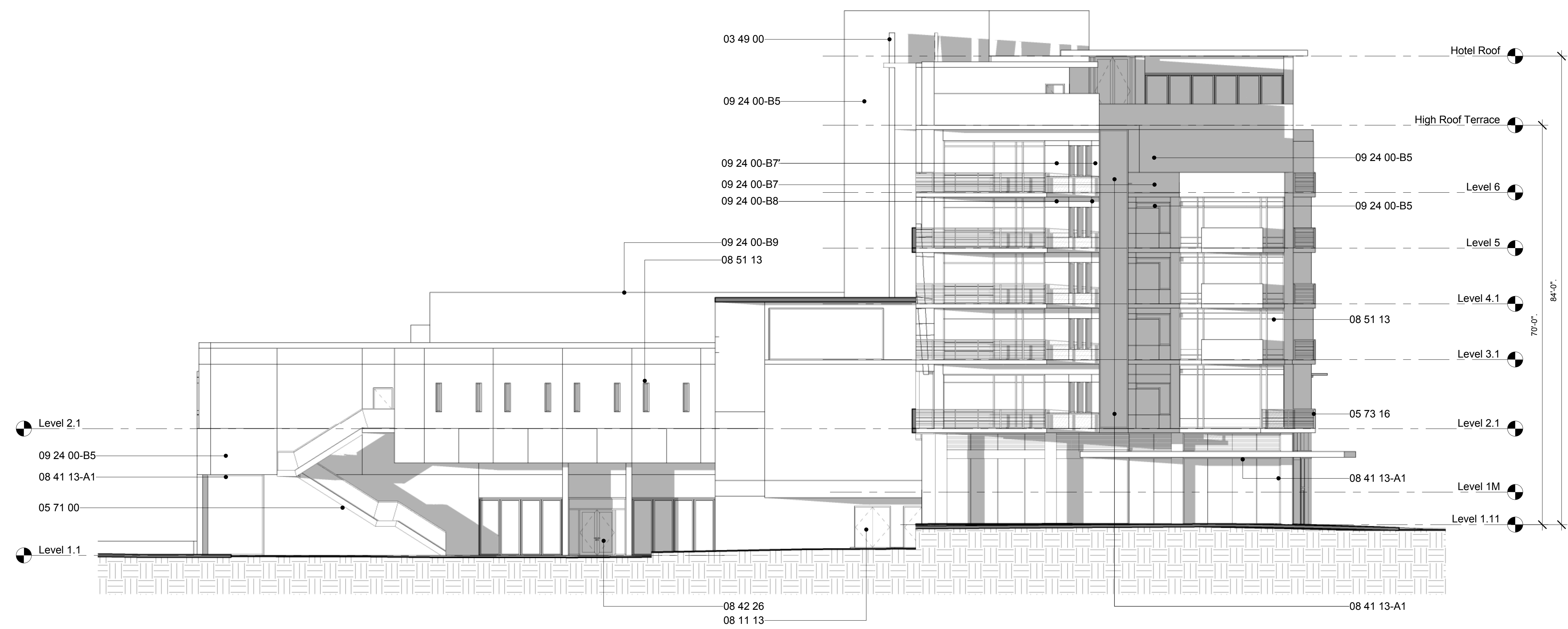
WESSMAN

DOWNTOWN PALM SPRINGS



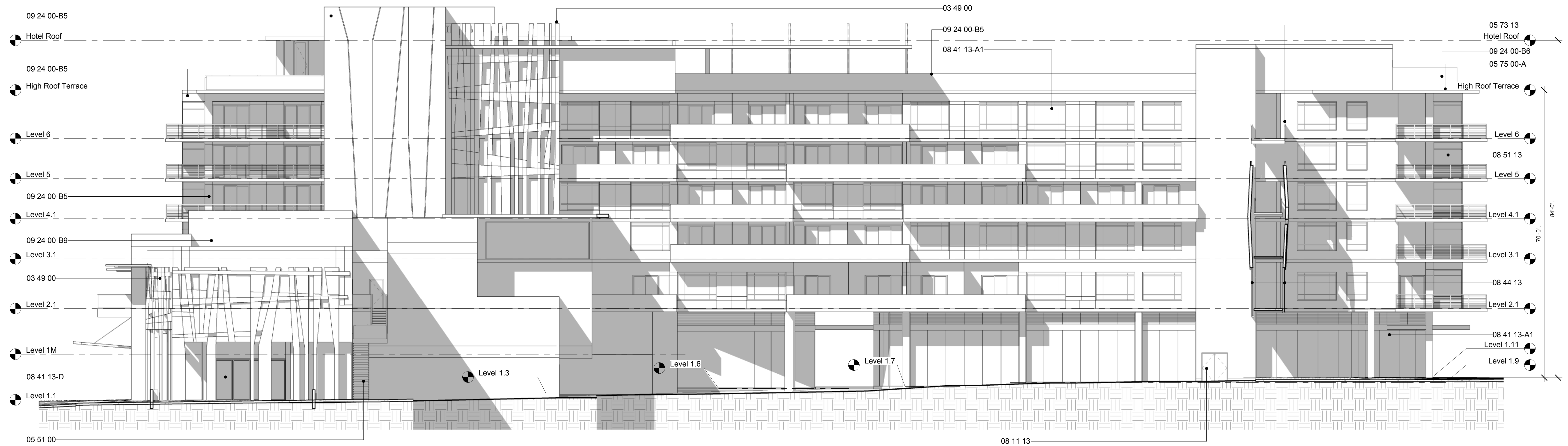


BLOCK 'C' MATERIALS



**1 Kimpton North Elevation**  
SCALE: 3/32" = 1'-0"

Key No.	Keynote Text
03 49 00	GLASS-FIBER-REINFORCED CONCRETE (GFR) WALL PANELS - FINISH: SMOOTH FORM - COLOR: NATURAL W/ WHITE PORTLAND CEMENT
05 51 00	METAL STAIR, STEEL PLATE STRINGERS; SHEET STEEL RISER/TREAD PAN; CONCRETE FILL - FINISH: DUNN-EDWARDS PAINT
05 71 00	DECORATIVE METAL STAIR - STRINGER, TREADS & FITTINGS: STAINLESS STEEL - GUARDRAIL, TEMPERED CLEAR GLASS GLAZING, BEVELLED & POLISHED EDGES
05 73 13	GLAZED DECORATIVE RAILING - FITTINGS: STAINLESS STEEL - GLAZING: CLEAR, BEVELLED & POLISHED EDGES
05 73 16	WIRE ROPE DECORATIVE METAL RAILING - PRODUCT: STAINLESS STEEL
05 75 00-A	DECORATIVE FORMED ALUMINUM BREAKMETAL FASCIA - FINISH: FLUOROPOLYMER - COLOR: MATCH DUNN-EDWARDS PAINT DE6225 'FOSSIL' - ACCENT: MATCH DUNN-EDWARDS PAINT DE5251 'SPICE CAKE'
08 11 13	HOLLOW METAL DOORS & FRAMES - COLOR: MATCH ADJACENT WALL COLOR
08 41 13-A1	ALUMINUM-FRAMED STOREFRONT - FRAME FINISH: CLEAR-ANODIZED
08 41 13-D	ALUMINUM-FRAMED STOREFRONT DOOR/S - FRAME: NARROW STYLE, MATCH ADJACENT - HINGES: FOLDING
08 42 26	ALL-GLASS ENTRANCES - TOP & BOTTOM RAILS: POLISHED STAINLESS STEEL
08 44 13	GLAZED ALUMINUM CURTAIN WALL - FRAME: ALUMINUM, CLEAR-ANODIZED
08 51 13	ALUMINUM WINDOW - OPERATION: FIXED EXCEPT WHERE INDICATED OTHERWISE - FRAME: THERMALLY-BROKEN ALUMINUM, CLEAR-ANODIZED
09 24 00-B5	CEMENT PLASTER WALL; 3-COAT POLYMER-MODIFIED SCRATCH & BROWN - FINISH COAT: FULL-POLYMER; FINE SAND - INTEGRAL COLOR: DUNN-EDWARDS DE6234 'SERENE THOUGHT'
09 24 00-B6	CEMENT PLASTER WALL; 3-COAT POLYMER-MODIFIED SCRATCH & BROWN - FINISH COAT: FULL-POLYMER; FINE SAND - INTEGRAL COLOR: DUNN-EDWARDS DE6225 'FOSSIL'
09 24 00-B7	CEMENT PLASTER WALL; 3-COAT POLYMER-MODIFIED SCRATCH & BROWN - FINISH COAT: FULL-POLYMER; FINE SAND - INTEGRAL COLOR: DUNN-EDWARDS DE5249 'COYOTE'
09 24 00-B8	CEMENT PLASTER WALL; 3-COAT POLYMER-MODIFIED SCRATCH & BROWN - FINISH COAT: FULL-POLYMER; FINE SAND - INTEGRAL COLOR: DUNN-EDWARDS DE5494 'EVEN GROWTH'
09 24 00-B9	CEMENT PLASTER WALL; 3-COAT POLYMER-MODIFIED SCRATCH & BROWN - FINISH COAT: FULL-POLYMER; FINE SAND - INTEGRAL COLOR: DUNN-EDWARDS DE5353 'GOLDEN CREST'



**2 Kimpton East Elevation**  
SCALE: 3/32" = 1'-0"

**WESSMAN**  
DEVELOPMENT COMPANY

**Downtown Palm Springs**

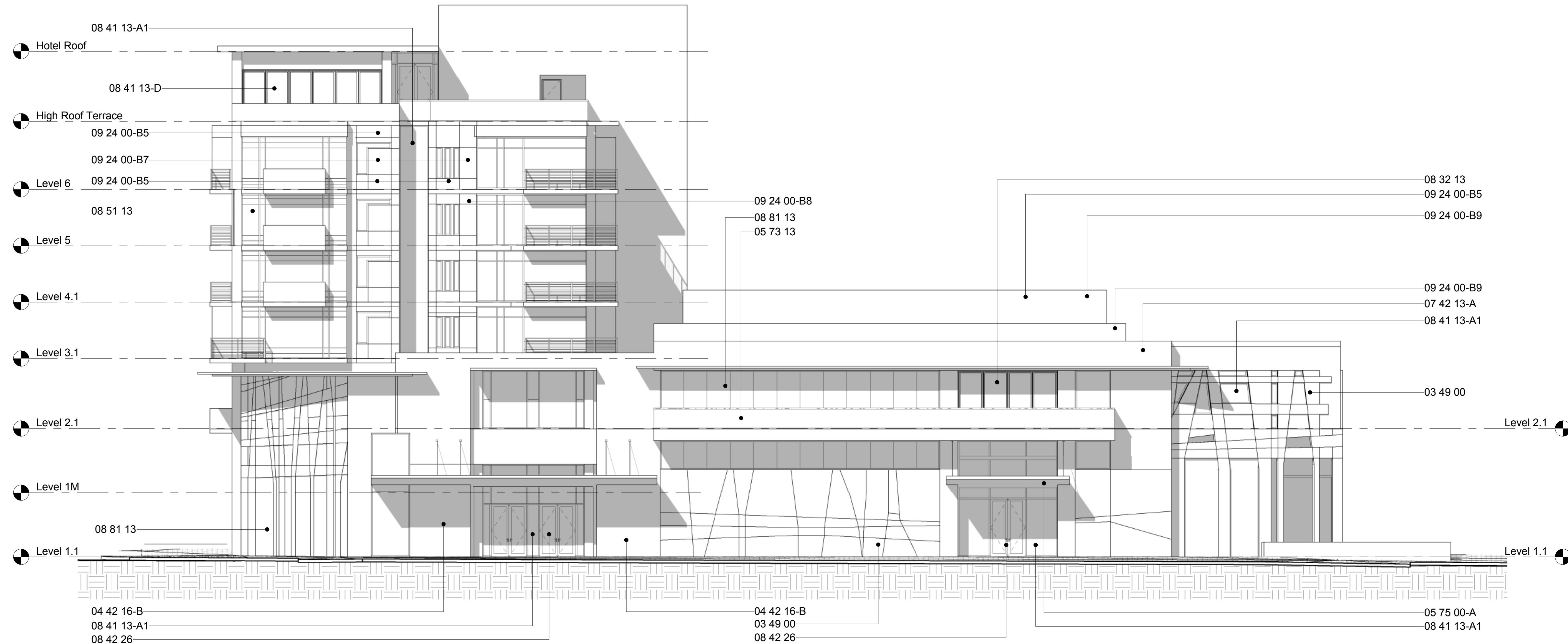
Project Address: North Palm Canyon Drive  
Project Issue Date: 2012-12-11  
Project Number: AP\_1206  
Reviewed By: MM  
Drawn By: SH

NUM	ISSUE TITLE	DATE
	BUILDING ELEVATIONS	

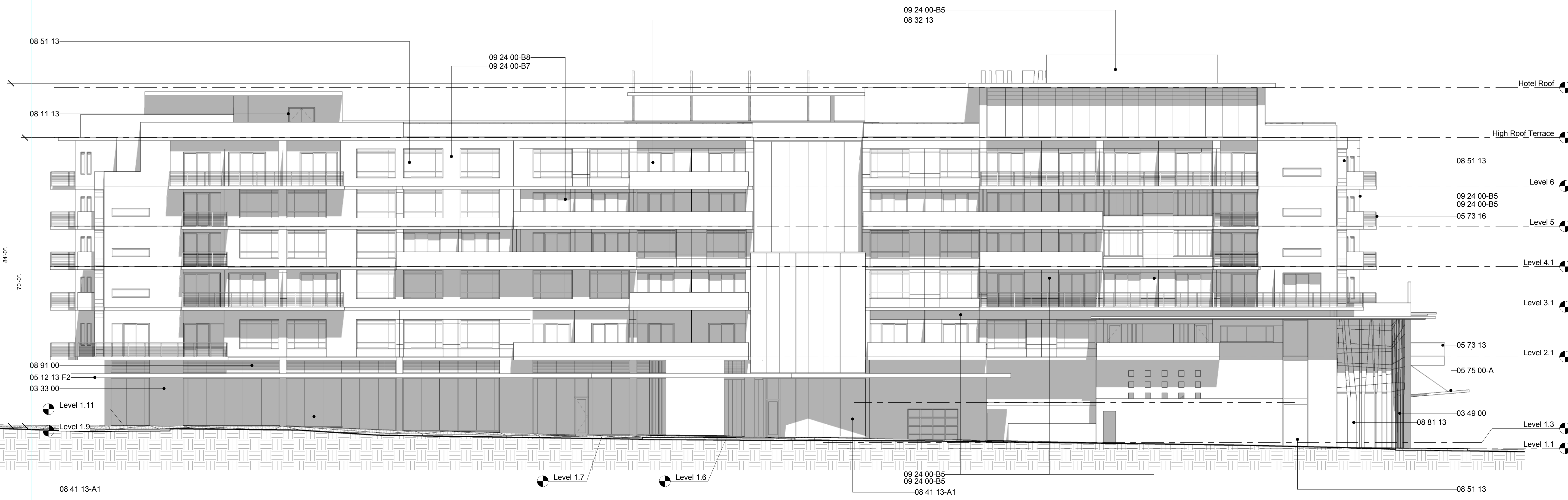
BUILDING ELEVATIONS

A-21.1  
BLOCK C

NOT FOR CONSTRUCTION



**1 Kimpton South Elevation**  
SCALE: 3/32" = 1'-0"



**2 Kimpton West Elevation**  
SCALE: 3/32" = 1'-0"

Keynote Legend	
Key No.	Keynote Text
03 33 00	ARCHITECTURAL CONCRETE COLUMN - FINISH: SMOOTH FORM, FINE ACID ETCH - COLOR: NATURAL W/ WHITE PORTLAND CEMENT
03 49 00	GLASS-FIBER-REINFORCED CONCRETE (GFRC) WALL PANELS - FINISH: SMOOTH FORM - COLOR: NATURAL W/ WHITE PORTLAND CEMENT
04 42 16-B	STEEL-STUD-SUPPORTED STONE CLADDING - GRANITE: POLISHED GRAY
05 12 13-F2	ARCHITECTURALLY EXPOSED STRUCTURAL STEEL CHANNEL FASCIA - FINISH: DUNN-EDWARDS PAINT DE122 'BRASSY'
05 73 13	GLAZED DECORATIVE RAILING - FITTINGS: STAINLESS STEEL - GLAZING: CLEAR, BEVELLED & POLISHED EDGES
05 73 16	WIRE ROPE DECORATIVE METAL RAILING - PRODUCT: STAINLESS STEEL
05 75 00-A	DECORATIVE FORMED ALUMINUM BREAKMETAL FASCIA - FINISH: FLUOROPOLYMER - COLOR: MATCH DUNN-EDWARDS PAINT DE6225 'FOSSIL' - ACCENT: MATCH DUNN-EDWARDS PAINT DE6225 'FOSSIL'
07 42 13-A	METAL WALL PANEL - LARGE FORMAT; FLUSH; STAGGERED JOINTS, PREFINISHED - COLOR: MATCH DUNN-EDWARDS PAINT DE6232 'ABSTRACT WHITE'
08 11 13	HOLLOW METAL DOORS & FRAMES - COLOR: MATCH ADJACENT WALL COLOR
08 32 13	SLIDING ALUMINUM-FRAMED GLASS DOORS - FRAME FINISH: CLEAR-ANODIZED
08 41 13-A1	ALUMINUM-FRAMED STOREFRONT - FRAME FINISH: CLEAR-ANODIZED
08 41 13-D	ALUMINUM-FRAMED STOREFRONT DOORS - FRAME: NARROW STYLE; MATCH ADJACENT - HINGES: FOLDING
08 42 26	ALL-GLASS ENTRANCES - TOP & BOTTOM RAILS: POLISHED STAINLESS STEEL
08 51 13	ALUMINUM WINDOW - OPERATION: FIXED EXCEPT WHERE INDICATED OTHERWISE - FRAME: THERMALLY-BROKEN ALUMINUM; CLEAR-ANODIZED
08 81 13	DECORATIVE GLASS PATTERNED FRITTED GLASS - PRODUCT: SUMO
08 91 00	LOUVERS - PRODUCT: EXTRUDED ALUMINUM - COLOR: MATCH ADJACENT ALUMINUM STOREFRONT
09 24 00-B5	CEMENT PLASTER WALL, 3-COAT POLYMER-MODIFIED SCRATCH & BROWN - FINISH COAT: FULL-POLYMER, FINE SAND - INTEGRAL COLOR: DUNN-EDWARDS DE5234 'SERENE THOUGHT'
09 24 00-B7	CEMENT PLASTER WALL, 3-COAT POLYMER-MODIFIED SCRATCH & BROWN - FINISH COAT: FULL-POLYMER, FINE SAND - INTEGRAL COLOR: DUNN-EDWARDS DE5249 'COYOTE'
09 24 00-B8	CEMENT PLASTER WALL, 3-COAT POLYMER-MODIFIED SCRATCH & BROWN - FINISH COAT: FULL-POLYMER, FINE SAND - INTEGRAL COLOR: DUNN-EDWARDS DE5494 'EVEN GROWTH'
09 24 00-B9	CEMENT PLASTER WALL, 3-COAT POLYMER-MODIFIED SCRATCH & BROWN - FINISH COAT: FULL-POLYMER, FINE SAND - INTEGRAL COLOR: DUNN-EDWARDS DE5353 'GOLDEN CREST'

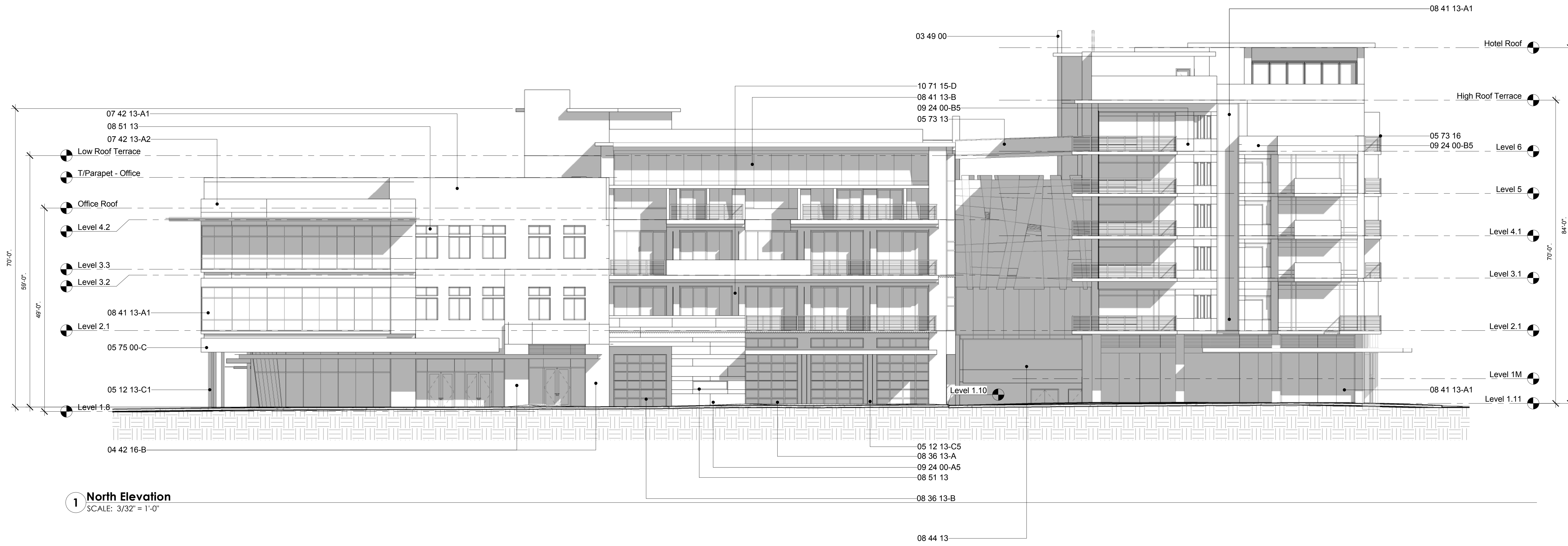


**Downtown Palm Springs**

Project Address: North Palm Canyon Drive  
Project Issue Date: 2012-12-11  
Project Number: AP\_1206  
Reviewed By: MM  
Drawn By: SH

NUM	ISSUE TITLE	DATE

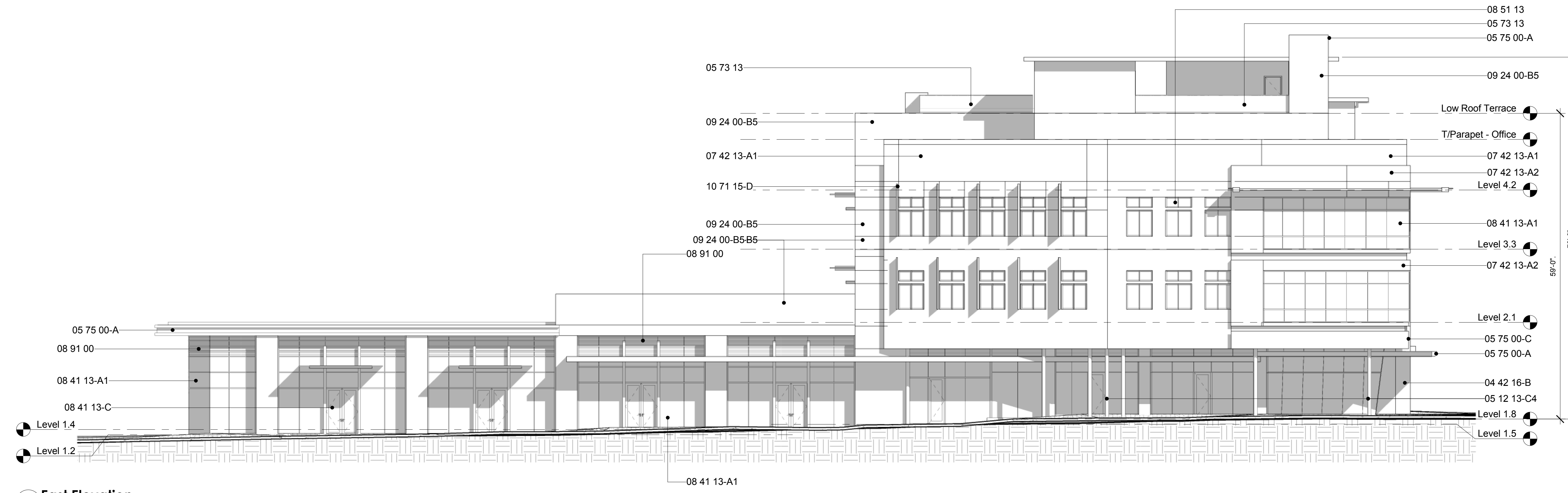
**BUILDING ELEVATIONS**



**1 North Elevation**  
SCALE: 3/32" = 1'-0"

**Keynote Legend**

Key No.	Keynote Text
03 49 00	GLASS-FIBER-REINFORCED CONCRETE (GFR) WALL PANELS - FINISH: SMOOTH FORM - COLOR: NATURAL W/ WHITE PORTLAND CEMENT
04 42 16	STEEL-STUD-SUPPORTED STONE CLADDING - GRANITE: POLISHED GRAY
04 42 16-B	CAST LIMESTONE MASONRY PANEL - FINISH: HONED; COLOR: NATURAL
04 72 00	ARCHITECTURALLY-EXPOSED STRUCTURAL STEEL ROUND HOLLOW STRUCTURAL SECTION COLUMN - FINISH: DUNN-EDWARDS PAINT DEC 793 'CHALKY'
05 12 13-C1	ARCHITECTURALLY-EXPOSED STRUCTURAL STEEL ROUND HOLLOW STRUCTURAL SECTION COLUMN - FINISH: DUNN-EDWARDS PAINT DE6225 'FOSSIL'
05 12 13-C4	ARCHITECTURALLY-EXPOSED STRUCTURAL STEEL ROUND HOLLOW STRUCTURAL SECTION COLUMN - FINISH: DUNN-EDWARDS PAINT DE6225 'FOSSIL'
05 12 13-C5	ARCHITECTURALLY-EXPOSED STRUCTURAL STEEL WIDE FLANGE COLUMN - FINISH: DUNN-EDWARDS PAINT DE6225 'FOSSIL'
05 51 00	METAL STAIR: STEEL PLATE STRINGERS, SHEET STEEL RISER/TREAD PAN, CONCRETE FILL - FINISH: DUNN-EDWARDS PAINT
05 73 13	GLAZED DECORATIVE RAILING - FITTINGS: STAINLESS STEEL - GLAZING: CLEAR, BEVELLED & POLISHED EDGES
05 73 16	WIRE ROPE DECORATIVE METAL RAILING - PRODUCT: STAINLESS STEEL
05 75 00-A	DECORATIVE FORMED ALUMINUM BREAKMETAL FASCIA - FINISH: FLUOROPOLYMER - COLOR: MATCH DUNN-EDWARDS PAINT DE6225 'FOSSIL'
05 75 00-C	DECORATIVE FORMED PERFORATED METAL ACCENT SCREEN - MFR/PRODUCT: MICHOLS 12 GAUGE CLEAR-ANODIZED ALUMINUM 1/8" PERFORATIONS AT 1/2" ON CENTER
07 42 13-A1	METAL WALL PANEL - LARGE FORMAT; FLUSH; STAGGERED JOINTS; PREFINISHED - COLOR: MATCH DUNN-EDWARDS PAINT DE6225 'FOSSIL'
07 42 13-A2	METAL WALL PANEL - LARGE FORMAT; FLUSH; STAGGERED JOINTS; PREFINISHED - COLOR: MATCH DUNN-EDWARDS PAINT DE6225 'DRIFTING'
08 11 13	HOLLOW METAL DOORS & FRAMES - COLOR: MATCH ADJACENT WALL COLOR
08 32 13	SLIDING ALUMINUM-FRAMED GLASS DOORS - FRAME FINISH: CLEAR-ANODIZED
08 36 13-A	SECTIONAL DOOR - FRAME: CLEAR-ANODIZED ALUMINUM - GLAZING: CLEAR
08 36 13-B	SECTIONAL DOOR - FRAME: CLEAR-ANODIZED ALUMINUM - GLAZING: FROSTED
08 41 13	ALUMINUM-FRAMED STOREFRONT - FRAME FINISH: CLEAR-ANODIZED
08 41 13-A1	ALUMINUM-FRAMED SLOPED STOREFRONT - FRAME FINISH: ALUMINUM; CLEAR-ANODIZED
08 41 13-B	ALUMINUM-FRAMED SLOPED STOREFRONT - FRAME FINISH: ALUMINUM; CLEAR-ANODIZED
08 41 13-C	ALUMINUM-FRAMED STOREFRONT ENTRANCE - FRAME: NARROW STILE; MATCH ADJACENT STOREFRONT - HINGES: PIVOT
08 41 13-D	ALUMINUM-FRAMED STOREFRONT DOORIS - FRAME: NARROW STILE; MATCH ADJACENT - HINGES: FOLDING
08 44 13	GLAZED ALUMINUM CURTAIN WALL - FRAME: ALUMINUM; CLEAR-ANODIZED
08 51 13	ALUMINUM WINDOW - OPERATION: FIXED EXCEPT WHERE INDICATED OTHERWISE - FRAME: THERMALLY-BROKEN ALUMINUM; CLEAR-ANODIZED
08 81 00-D1	GLASS GLAZING, DUAL-INSULATED RADIANT LOWE - COLOR: CLEAR
08 91 00	LOUVERS - PRODUCT: EXTRUDED ALUMINUM - COLOR: MATCH ADJACENT ALUMINUM STOREFRONT
08 92 00	LOUVERED EQUIPMENT ENCLOSURE - PRODUCT: FORMED SHEET METAL; POWDER-COATED FINISH - COLOR: MATCH DUNN-EDWARDS PAINT DE6234 'SERENE THOUGHT'
09 24 00-A5	CEMENT PLASTER WALL; 3-COAT - POLYMER-MODIFIED SCRATCH & BROWN - FINISH COAT: FULL-POLYMER; SMOOTH HAND-TROWELLED - INTEGRAL COLOR: MATCH DUNN-EDWARDS DE122 'BRASSY'
09 24 00-B	CEMENT PLASTER WALL; 3-COAT - POLYMER-MODIFIED SCRATCH & BROWN - FINISH COAT: FULL-POLYMER; FINE SAND - INTEGRAL COLOR: DUNN-EDWARDS DE6234 'SERENE THOUGHT'
09 24 00-B5	CEMENT PLASTER WALL; 3-COAT - POLYMER-MODIFIED SCRATCH & BROWN - FINISH COAT: FULL-POLYMER; FINE SAND - INTEGRAL COLOR: DUNN-EDWARDS DE6234 'SERENE THOUGHT'
10 11 46	VISUAL DISPLAY FABRIC
10 71 15-D	EXTERIOR SUN CONTROL VERTICAL SHADE - PRODUCT: ALUMINUM; ETCHED/PRINTED GRAPHICS



**2 East Elevation**  
SCALE: 3/32" = 1'-0"

**Wessman**  
DEVELOPMENT COMPANY

**Downtown Palm Springs**

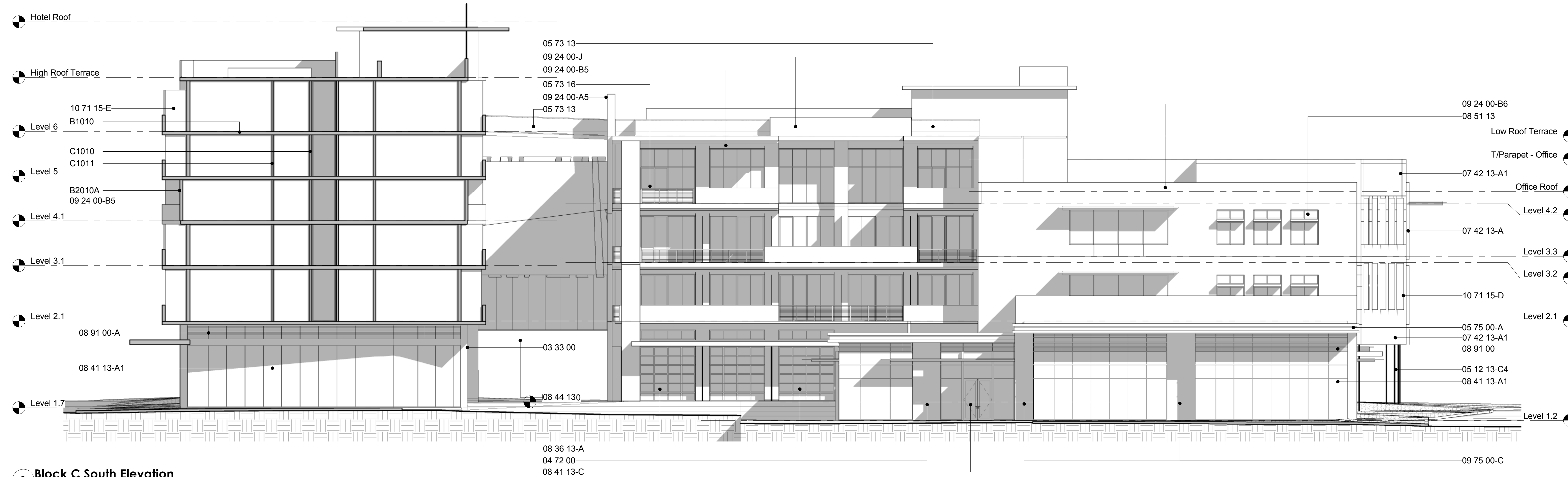
Project Address: North Palm Canyon Drive  
Project Issue Date: 2012-12-11  
Project Number: AP\_1206  
Reviewed By: MM  
Drawn By: SH

NUM	ISSUE TITLE	DATE

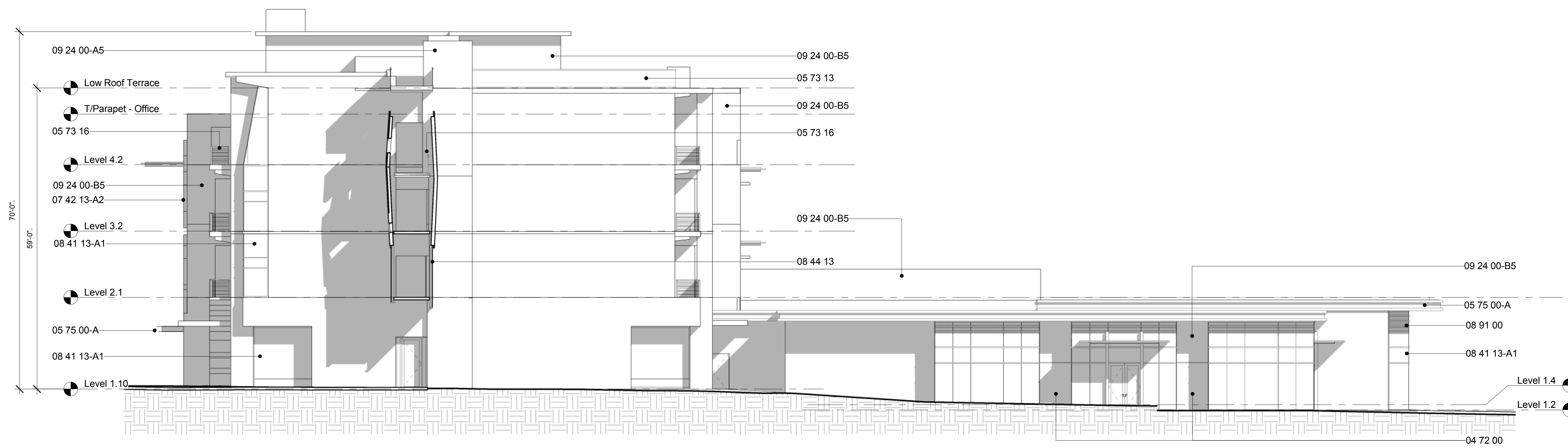
**BUILDING ELEVATIONS**

**A-21.3**  
**BLOCK C**

NOT FOR CONSTRUCTION



Key No.	Keynote Text
03 33 00	ARCHITECTURAL CONCRETE COLUMN - FINISH: SMOOTH FORM; FINE ACID ETCH - COLOR: NATURAL W/ WHITE PORTLAND CEMENT
04 72 00	CAST LIMESTONE MASONRY PANEL - FINISH: HONED; COLOR 'NATURAL'
05 12 13-C4	ARCHITECTURALLY-EXPOSED STRUCTURAL STEEL; ROUND HOLLOW STRUCTURAL SECTION COLUMN - FINISH: DUNN EDWARDS PAINT DE6225 'FOSSIL'
05 73 13	GLAZED DECORATIVE RAILING - FITTINGS: STAINLESS STEEL - GLAZING: CLEAR; BEVELLED & POLISHED EDGES
05 73 16	WIRE ROPE DECORATIVE METAL RAILING - PRODUCT: STAINLESS STEEL
05 75 00-A	DECORATIVE FORMED ALUMINUM BREAKMETAL FASCIA - FINISH: FLUOROPOLYMER - COLOR: MATCH DUNN-EDWARDS PAINT DE6225 'FOSSIL' - ACCENT: MATCH DUNN-EDWARDS PAINT DE5251 'SPICE CAKE'
07 42 13-A1	METAL WALL PANEL - LARGE FORMAT; FLUSH; STAGGERED JOINTS; PREFINISHED - COLOR: MATCH DUNN-EDWARDS PAINT DE6232 'ABSTRACT WHITE'
07 42 13-A	METAL WALL PANEL - LARGE FORMAT; FLUSH; STAGGERED JOINTS; PREFINISHED - COLOR: MATCH DUNN-EDWARDS PAINT DE6225 'FOSSIL'
07 42 13-A2	METAL WALL PANEL - LARGE FORMAT; FLUSH; STAGGERED JOINTS; PREFINISHED - COLOR: MATCH DUNN-EDWARDS PAINT DEC770 'DRIFTING'
08 36 13-A	SECTIONAL DOOR - FRAME: CLEAR-ANODIZED ALUMINUM - GLAZING: CLEAR
08 41 13-A1	ALUMINUM-FRAMED STOREFRONT - FRAME FINISH: CLEAR-ANODIZED
08 41 13-C	ALUMINUM-FRAMED STOREFRONT ENTRANCE - FRAME: NARROW STILE; MATCH ADJACENT STOREFRONT - HINGES: PIVOT
08 44 13	GLAZED ALUMINUM CURTAIN WALL - FRAME: ALUMINUM; CLEAR-ANODIZED
08 51 13	ALUMINUM WINDOW - OPERATION: FIXED EXCEPT WHERE INDICATED OTHERWISE - FRAME: THERMALLY-BROKEN ALUMINUM; CLEAR-ANODIZED
08 91 00	LOUVERS - PRODUCT: EXTRUDED ALUMINUM - COLOR: MATCH ADJACENT ALUMINUM STOREFRONT
08 91 00-A	LOUVERS - PRODUCT: EXTRUDED ALUMINUM - COLOR: MATCH DUNN-EDWARDS DEA176 'IRON RIVER'
09 24 00-A5	CEMENT PLASTER WALL; 3-COAT POLYMER-MODIFIED SCRATCH & BROWN - FINISH COAT: FULL-POLYMER, FINE SAND - INTEGRAL COLOR: DUNN-EDWARDS DE122 'BRASSY'
09 24 00-B5	CEMENT PLASTER WALL; 3-COAT POLYMER-MODIFIED SCRATCH & BROWN - FINISH COAT: FULL-POLYMER, FINE SAND - INTEGRAL COLOR: DUNN-EDWARDS DE6234 'SERENE THOUGHT'
09 24 00-B6	CEMENT PLASTER WALL; 3-COAT POLYMER-MODIFIED SCRATCH & BROWN - FINISH COAT: FULL-POLYMER, FINE SAND - INTEGRAL COLOR: DUNN-EDWARDS DE6225 'FOSSIL'
09 24 00-J	CEMENT PLASTER GUARDRAIL; 3-COAT POLYMER-MODIFIED - FINISH COAT: FULL-POLYMER, FINE SAND - PAINTED COLOR: MATCH DUNN-EDWARDS DE122 'BRASSY'
09 75 00-C	CAST STONE FACING - PRODUCT: TERRAZZO - FINISH: HONED; MATRIX COLOR 'GRAY'; RED AGGREGATE
10 71 15-D	EXTERIOR SUN CONTROL VERTICAL SHADE - PRODUCT: ALUMINUM; ETCHED/PRINTED GRAPHICS
10 71 15-E	EXTERIOR VERTICAL DIVIDER (PRIVACY SCREEN) - PRODUCT: ALUMINUM; ETCHED/PRINTED GRAPHICS
B1010	FLOOR CONSTRUCTION: 9" THICK CIP POST-TENSION CONCRETE - FIRE-RESISTANCE: 2-HOUR
B2010A	EXTERIOR WALL: 6" COLD-ROLLED STUDS; FIBERGLASS FACED SILICONE TREATED GYPSUM CORE BOARD; FLUID-APPLIED AIR BARRIER; MODIFIED 7/8" STUCCO W/ FULL POLYMER FINISH COAT; SMOOTH FINISH - AIR-BARRIER: WATERPROOF; VAPOR-PERMEABLE - FIRE-RESISTANCE: ONE-HOUR
C1010	PARTITION: 3-5/8 LIGHTGAUGE GALV. STEEL STUDS; 5/8" TYPE 'X' GYP. BRD. (1) SIDE - TYPICAL USE: SHELL CONSTRUCTION CORRIDORS & UTILITY SPACES
C1011	PARTITION: 3-5/8 LIGHTGAUGE GALV. STEEL STUDS; 5/8" TYPE 'X' GYP. BRD. (2) SIDES - TYPICAL USE: ROOM PARTITIONS



**Downtown Palm Springs**

Project Address: North Palm Canyon Drive  
Project Issue Date: 2012-12-11  
Project Number: AP\_1206  
Reviewed By: MM  
Drawn By: SH

NUM	ISSUE TITLE	DATE
-----	-------------	------

**BUILDING ELEVATIONS**