

OVERALL SITE PLAN

11.28.2012

Allen+Philp
architects+interiors



BLOCK 'A' STREET LEVEL FLOOR PLAN





BLOCK 'A' SCENE ONE





BLOCK 'A' SOUTH ELEVATION

11.28.2012

Allen+Philp
architects+interiors

WESSMAN

DOWNTOWN PALM SPRINGS



BLOCK 'A' SCENE TWO

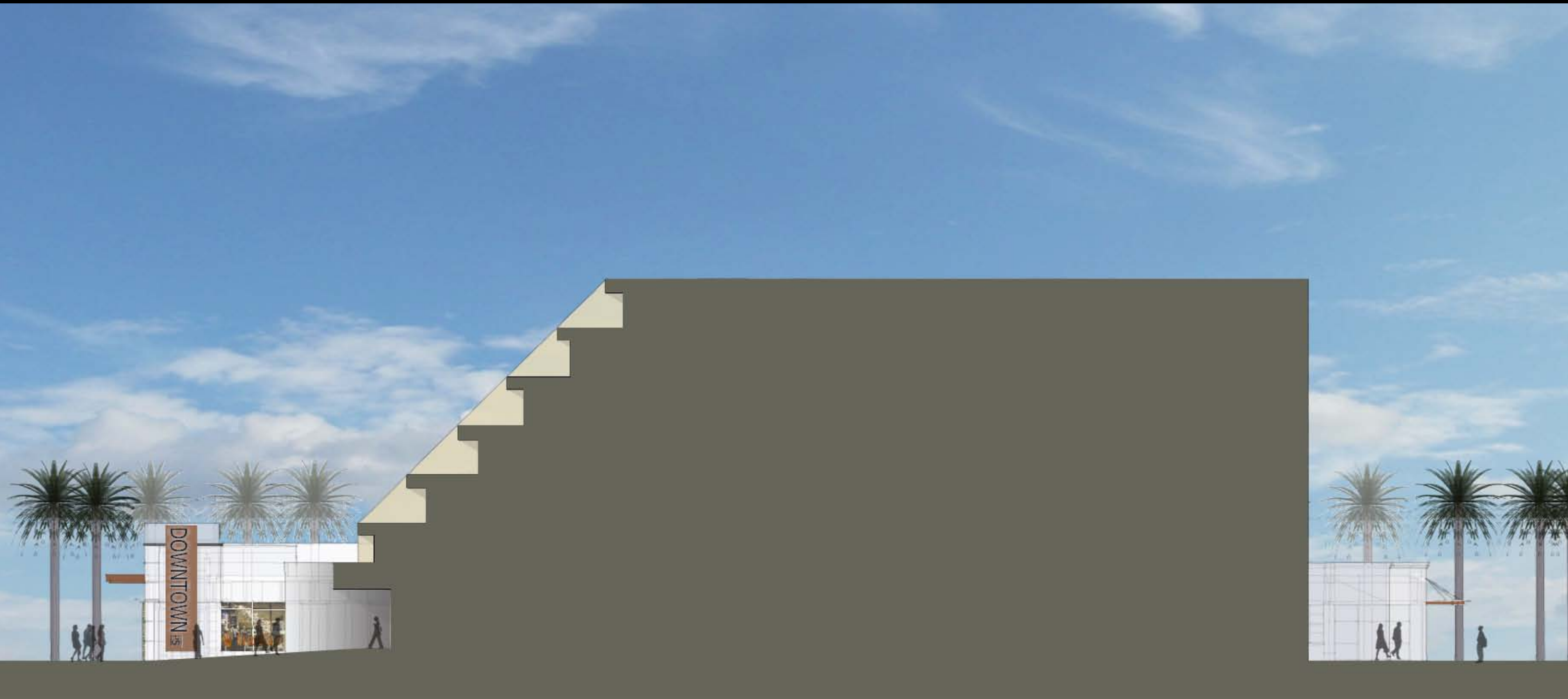
WESSMAN

DOWNTOWN PALM SPRINGS

11.28.2012

Allen+ Philp
architects+interiors





BLOCK 'A' NORTH ELEVATION

11.28.2012

Allen+Philp
architects+interiors

WESSMAN

DOWNTOWN PALM SPRINGS

08 41 13-A1

UNCOATED		
1/4" (6mm) Visteon Versalus Green		
	1/4" Monolithic	1" Insulated Unit With Clear
Shading Coefficient	0.71	0.57
% Visible Light Transmittance	76	68
U-Value (Btu/h-ft ² -°F)	1.25	1.36
U-Value (W/m ² -K)	0.93	0.50
U-Value (W/m ² -K)	1.03	0.47

Visteon
 More information available at www.visteon.com/Products or 1-800-331-2667
 Data Generated by BNL Window 5.2 v.5.2.17 Analysis

08 81 00-D3

05 12 13-F1

09 24 00-B2

05 12 13-C1

05 12 13-F2

07 42 13-B

04 43 13

07 64 19

VMZINC

05 12 13-C2

09 24 00-B1

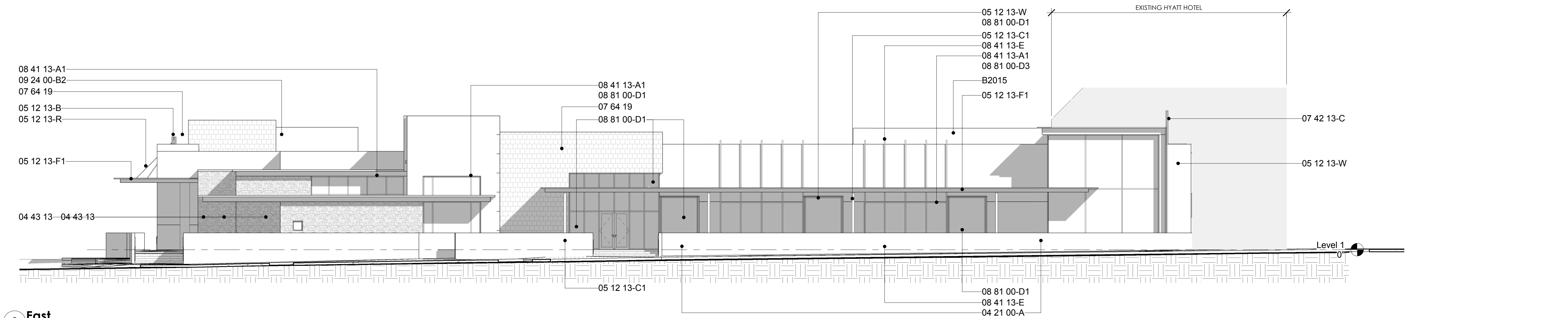
04 72 00

04 21 00-A

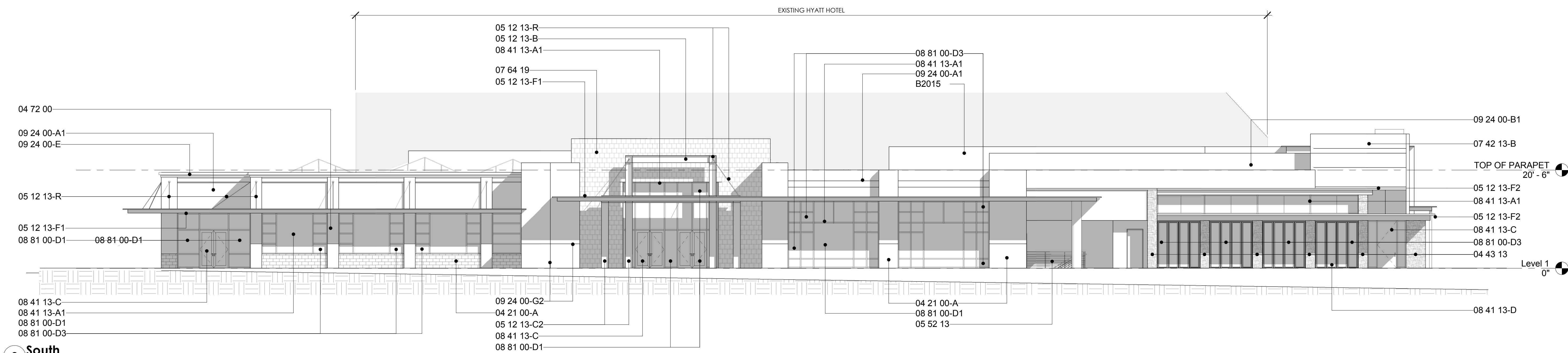
BLOCK 'A' MATERIALS



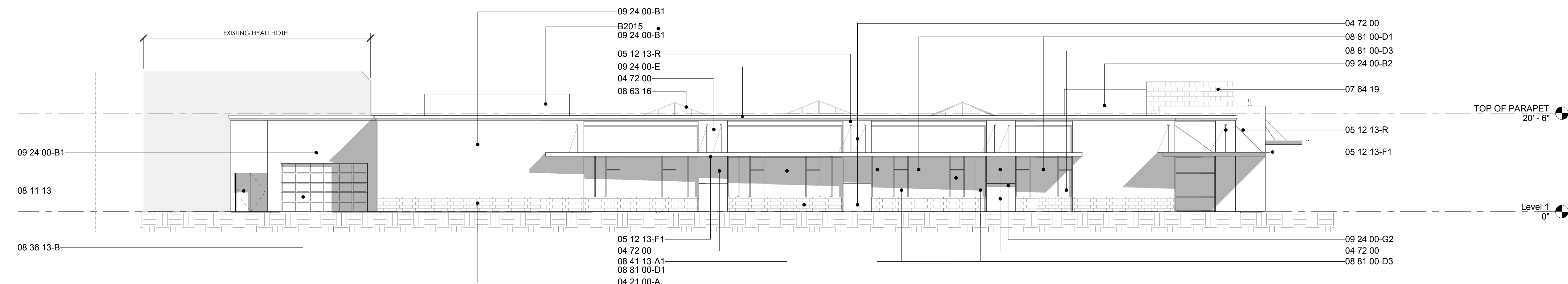
1 North
SCALE: 3/32" = 1'-0"



2 East
SCALE: 3/32" = 1'-0"



3 South
SCALE: 3/32" = 1'-0"



4 West
SCALE: 3/32" = 1'-0"

Key No.	Keynote Text
04 21 00-A	UNIT MASONRY NON-LOAD-BEARING VENEER - PRODUCT: TRENYTH 8X16 TRENDSTONE - COLOR: MISSION WHITE
04 43 13	NATURAL STONE MASONRY VENEER: 1" - NOMINAL THICKNESS: CUT CORNERS - PRODUCT: LOCALLY SOURCED - FINISH: WEATHERED
04 72 00	CAST LIMESTONE MASONRY PANEL - FINISH: HONED, COLOR 'NATURAL'
05 12 13-B	ARCHITECTURALLY-EXPOSED STRUCTURAL STEEL WIDE FLANGE BEAM - FINISH: DUNN-EDWARDS PAINT DE6371 'BLACK JACK'
05 12 13-C1	ARCHITECTURALLY-EXPOSED STRUCTURAL STEEL ROUND HOLLOW STRUCTURAL SECTION COLUMN - FINISH: DUNN-EDWARDS PAINT DEC 793 'CHALKY'
05 12 13-C2	ARCHITECTURALLY-EXPOSED STRUCTURAL STEEL WIDE FLANGE COLUMN - FINISH: DUNN-EDWARDS PAINT DE6371 'BLACK JACK'
05 12 13-F1	ARCHITECTURALLY-EXPOSED STRUCTURAL STEEL CHANNEL/STEEL PLATE COMPOSITE FASCIA - FINISH: DUNN-EDWARDS PAINT DE6271 'ELEMENTAL GREEN'
05 12 13-F2	ARCHITECTURALLY-EXPOSED STRUCTURAL STEEL CHANNEL FASCIA - FINISH: DUNN-EDWARDS PAINT DEA122 'BRASSY'
05 12 13-R	ARCHITECTURALLY-EXPOSED STRUCTURAL STEEL SOLID TENSION ROD - FINISH: DUNN-EDWARDS PAINT DE6371 'BLACK JACK'
05 12 13-W	ARCHITECTURALLY-EXPOSED STRUCTURAL STEEL PLATE WINDOW ENCLOSURE - MILL FINISH; 'HOT BLUING' ELECTROCHEMICAL CONVERSION COATING
05 52 13	STEEL TUBE RAILING - FINISH: DUNN-EDWARDS PAINT DEC 793 'CHALKY'
07 42 13-B	METAL WALL PANEL - LINEAR FORMAT; FLUSH; STAGGERED JOINTS; PREFINISHED - COLOR: FLUOROPOLYMER KYNAR 500 'CLASSIC COPPER'
07 42 13-C	METAL SIGN PANEL - FLUSH ALUMINUM COMPOSITE PANEL, PREFINISHED - COLOR: MATCH DUNN-EDWARDS PAINT FLAT SEAM SHEET METAL WALL SHINGLE, 12"x12" - METAL: EXPOSED ZINC
07 64 19	HOLLOW METAL DOORS & FRAMES - COLOR: MATCH ADJACENT WALL COLOR
08 11 13	SECTIONAL DOOR - FRAME: CLEAR ANODIZED ALUMINUM - GLAZING: FROSTED
08 36 13-B	ALUMINUM-FRAMED STOREFRONT - FRAME FINISH: CLEAR ANODIZED
08 41 13-A1	ALUMINUM-FRAMED STOREFRONT ENTRANCE - FRAME: NARROW STILE; MATCH ADJACENT STOREFRONT - HINGES: PIVOT
08 41 13-C	ALUMINUM-FRAMED STOREFRONT DOOR/S - FRAME: NARROW STILE; MATCH ADJACENT HINGES: FOLDING
08 41 13-D	ALUMINUM-FRAMED MULLION EXTENSION; WALL ATTACHMENT CLIP - FRAME FINISH: CLEAR ANODIZED
08 41 13-E	PYRAMIDAL METAL-FRAMED SKYLIGHT; EXISTING TO REMAIN
08 63 16	GLASS GLAZING; DUAL-INSULATED RADIANT LOW-E - COLOR: CLEAR
08 81 00-D1	GLASS GLAZING; DUAL-INSULATED RADIANT LOW-E - COLOR: GREEN
08 81 00-D3	GLASS GLAZING; DUAL-INSULATED RADIANT LOW-E - COLOR: GREEN
09 24 00-A1	CEMENT PLASTER WALL; 3-COAT POLYMER-MODIFIED SCRATCH & BROWN - FINISH COAT: FULL-POLYMER, SMOOTH HAND-TROWELLED - INTEGRAL COLOR: MATCH DUNN-EDWARDS DEC 793 'CHALKY'
09 24 00-B1	CEMENT PLASTER WALL; 3-COAT POLYMER-MODIFIED SCRATCH & BROWN - FINISH COAT: FULL-POLYMER, FINE SAND - INTEGRAL COLOR: MATCH DUNN-EDWARDS DEC 793 'CHALKY'
09 24 00-B2	CEMENT PLASTER WALL; 3-COAT POLYMER-MODIFIED SCRATCH & BROWN - FINISH COAT: FULL-POLYMER, FINE SAND - INTEGRAL COLOR: MATCH DUNN-EDWARDS DEC 793 'CHALKY'
09 24 00-E	CEMENT PLASTER COPING - SUBSTRATE: EXPANDED POLYSTYRENE CUT TO SHAPE - FINISH COAT: FULL POLYMER; FINE SAND FINISH - INTEGRAL COLOR: LIMESTONE PLASTER
09 24 00-G2 B2015	CEMENT PLASTER REVEAL JOINT ROOF SCREEN

Downtown Palm Springs

Project Address: North Palm Canyon Drive
Project Issue Date: 2012-12-10
Project Number: AP_1206
Reviewed By: MM
Drawn By: SH

NUM	ISSUE TITLE	DATE
-----	-------------	------

BUILDING ELEVATIONS