





## PROJECT DIRECTORY

### PROPERTY OWNER / CLIENT:

ALTA VERDE HOMES, LLC  
315 SOUTH BEVERLY DRIVE  
SUITE 208  
BEVERLY HILLS, CA 90212  
(310) 286-9200

### ARCHITECT:

POON DESIGN INC.  
315 SOUTH BEVERLY DRIVE  
SUITE 208  
BEVERLY HILLS, CA 90212  
(310) 277-8855

### STRUCTURAL:

OPTION ONE  
277 BRISTOL STREET  
SUITE 100  
COSTA MESA, CA 92626  
(714) 556-1916

## PROJECT SUMMARY

### PROJECT DESCRIPTION:

CONSTRUCTION OF 3 DETACHED SINGLE-FAMILY ONE-STORY RESIDENCE TYPES ON NEW LOTS. THESE PROTOTYPES ARE IN ACCORDANCE WITH THE P.D.D. SUBMITTAL (TENTATIVE TRACT MAP NO. 36723). PROTOTYPES WILL HAVE EXTERIOR FINISH VARIATIONS, FOR WHICH PALLETES ARE INCLUDED WITHIN THIS PACKAGE. ADDITIONALLY, LANDSCAPE DESIGNS ARE SUBMITTED AS PART OF THE A.A.C. SUBMITTAL.

### CLIENT:

ALTA VERDE HOMES, LLC

### PROJECT ADDRESS:

1030 BOGERT TRAIL  
PALM SPRINGS, CA 92262

### TRACT NO.:

TRACT #26377

### PROPOSED TENANT AREA:

SEE FLOOR PLANS

### CONSTRUCTION TYPE:

V-B

### REFERENCE CODES:

ALL WORK SHALL COMPLY TO:

BUILDING CODE:  
2013 CALIFORNIA BUILDING CODE

RESIDENTIAL CODE:  
2013 CALIFORNIA RESIDENTIAL CODE

ELECTRICAL CODE:  
2013 CALIFORNIA ELECTRICAL CODE

MECHANICAL CODE:  
2013 CALIFORNIA MECHANICAL CODE

PLUMBING CODE:  
2013 CALIFORNIA PLUMBING CODE

### NOTE:

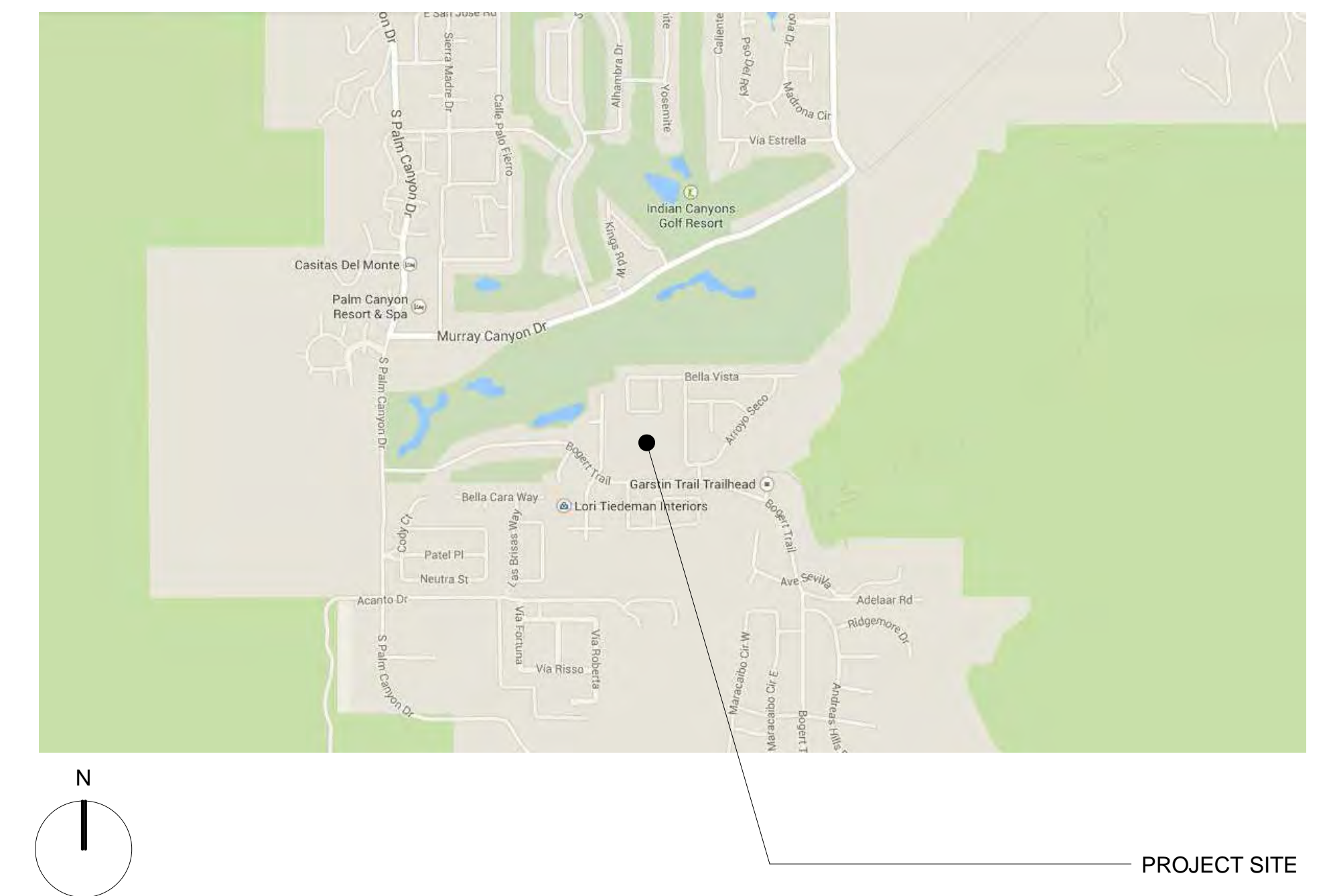
ARCHITECTURAL SDP -  
REMAINING ITEMS ON THE CHECKLIST DO NOT APPLY

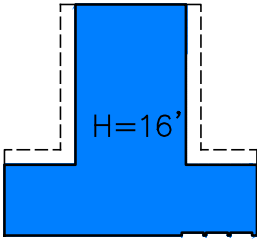
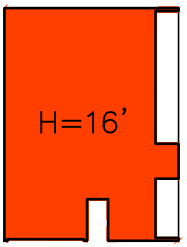
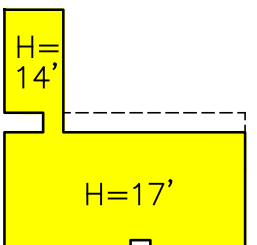
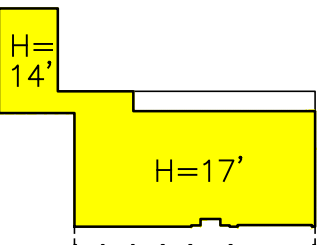


## SHEET INDEX

### ARCHITECTURAL:

A000	COVER SHEET, PROJECT INFORMATION
A100	OVERALL SITE PLAN
A101	FLOOR PLAN - L
A102	ROOF PLAN - L
A103	EXTERIOR RENDERING/ELEVATION - L
A104	EXTERIOR RENDERING/ELEVATION - L
A105	EXTERIOR ELEVATIONS - L
A106	FLOOR PLAN - T
A107	ROOF PLAN - T
A108	EXTERIOR RENDERING/ELEVATION - T
A109	EXTERIOR RENDERING/ELEVATION - T
A110	EXTERIOR ELEVATIONS - T
A111	FLOOR PLAN - G
A112	ROOF PLAN - G
A113	EXTERIOR RENDERING/ELEVATION - G
A114	EXTERIOR RENDERING/ELEVATION - G
A115	EXTERIOR ELEVATIONS - G
A116	EXTERIOR COLOR AND MATERIAL BOARD

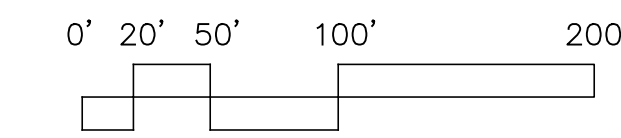
## VICINITY MAP



	THE T	5 UNITS	4720 GSF HOUSE 637 GSF GARAGE
	THE GALLERY	4 UNITS	4631 GSF HOUSE 782 GSF GARAGE
	THE L SCHEME A	3 UNITS	4544 GSF HOUSE 661 GSF GARAGE
	THE L SCHEME B	2 UNITS	4717 GSF HOUSE 661 GSF GARAGE
	ACCESSORY STRUCTURE A SEE SHEET A 18	4 UNITS	374 GSF
	ACCESSORY STRUCTURE B SEE SHEET A 18	5 UNITS	260 GSF
	TOTAL LOTS:	14	

\* THIS SITE PLAN LOT MIX SUBJECT TO CHANGE

\* DIVERSITY AMONG MODELS ACHIEVED THROUGH VARIATION OF LANDSCAPE AND MATERIAL PALETTES



OVERALL SITE PLAN

Scale: 1"=75'-0"

Planning Services Submittal 07 . 14 . 14

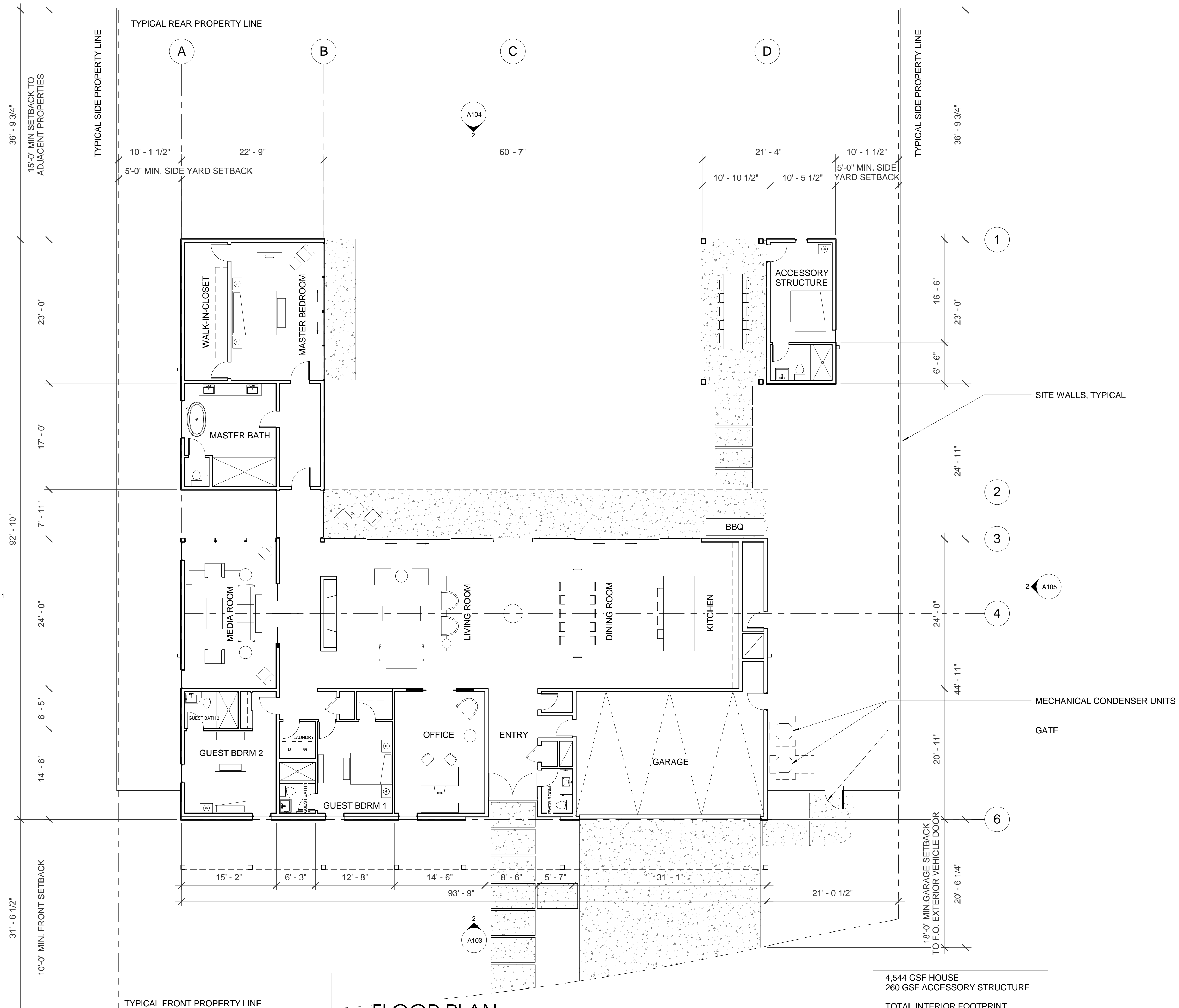
NOTES:

1. Prototype locations and unit mix subject to change.
2. Refer to P.D.D. submittal for site and landscape information.

**FLOOR PLAN**  
**THE "L"**

Scale: 1/8" = 1'-0"

Planning Services Submittal 07 . 14 . 14



4,544 GSF HOUSE  
260 GSF ACCESSORY STRUCTURE  
TOTAL INTERIOR FOOTPRINT  
(EXCLUDING GARAGE)  
= 4,804 SF  
+ 661 GSF GARAGE  
TOTAL FOOTPRINT  
= 5,465 SF

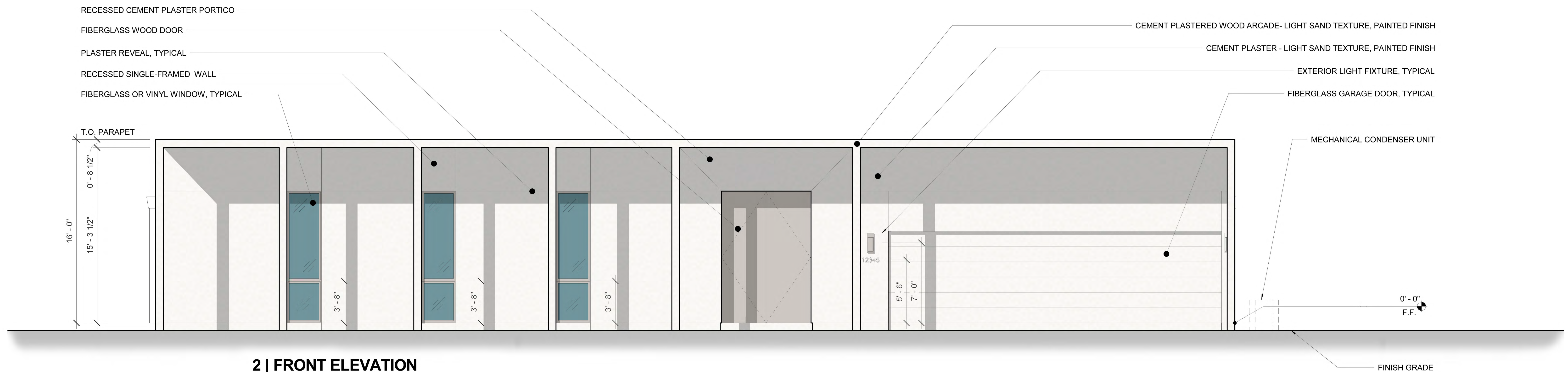
NOTES:  
1. Refer to P.D.D. submittal for site and landscape information.  
2. Refer to landscape drawings as part of this submittal.

**A101**





1 | FRONT PERSPECTIVE ELEVATION



2 | FRONT ELEVATION

NOTES:

1. The proposed elevations are design intent.
2. Minor dimensional adjustments may be made to accommodate constructability, sub-contractor input, and/or budget.
3. Window sizes may have minor adjustments to accommodate requirements of Title 24, and/or standard sizes from the final window supplier at time of bidding.
4. All and any minor revisions will not deviate from the design intent of the project or the vision of the community.



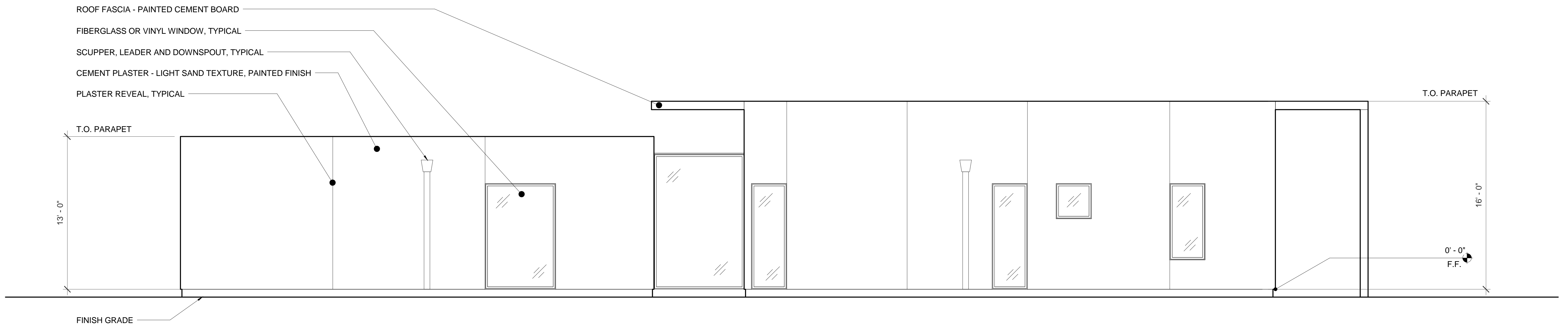
1 | REAR PERSPECTIVE ELEVATION



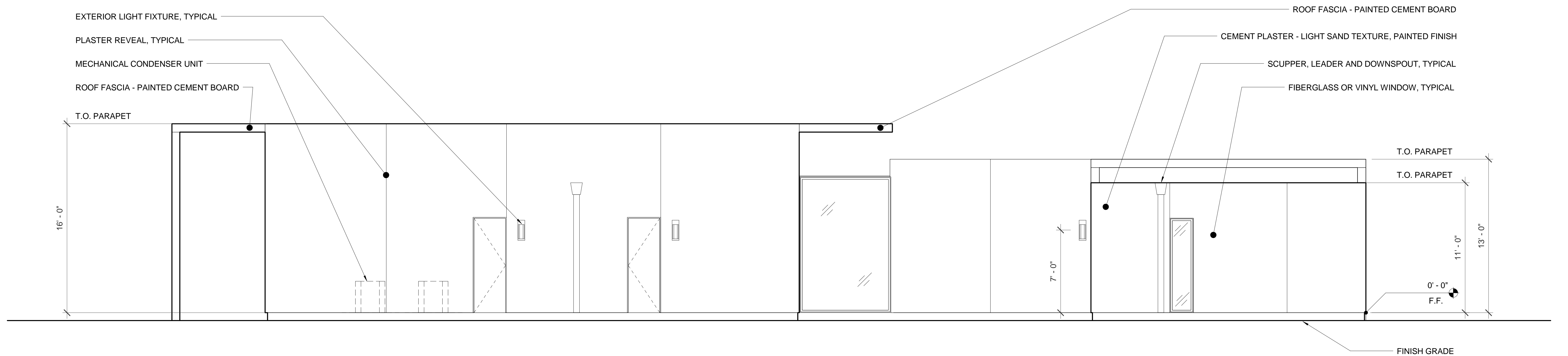
2 | REAR ELEVATION

NOTES:

1. The proposed elevations are design intent.
2. Minor dimensional adjustments may be made to accommodate constructability, sub-contractor input, and/or budget.
3. Window sizes may have minor adjustments to accommodate requirements of Title 24, and/or standard sizes from the final window supplier at time of bidding.
4. All and any minor revisions will not deviate from the design intent of the project or the vision of the community.



**1 | SIDE ELEVATION**

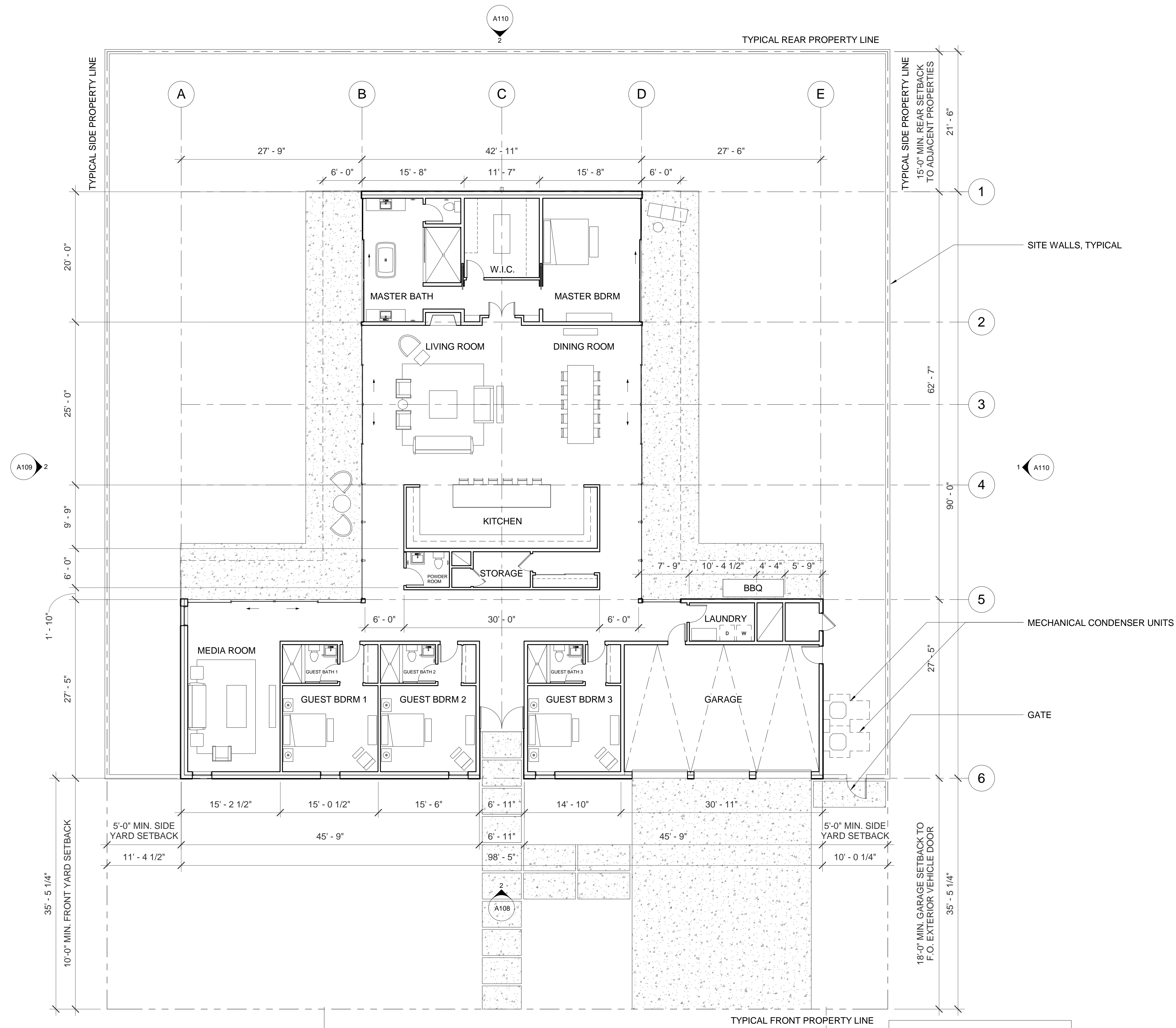


**2 | SIDE ELEVATION**

NOTES:

1. The proposed elevations are design intent.
2. Minor dimensional adjustments may be made to accommodate constructability, sub-contractor input, and/or budget.
3. Window sizes may have minor adjustments to accommodate requirements of Title 24, and/or standard sizes from the final window supplier at time of bidding.
4. All and any minor revisions will not deviate from the design intent of the project or the vision of the community.





FLOOR PLAN  
THE "T"

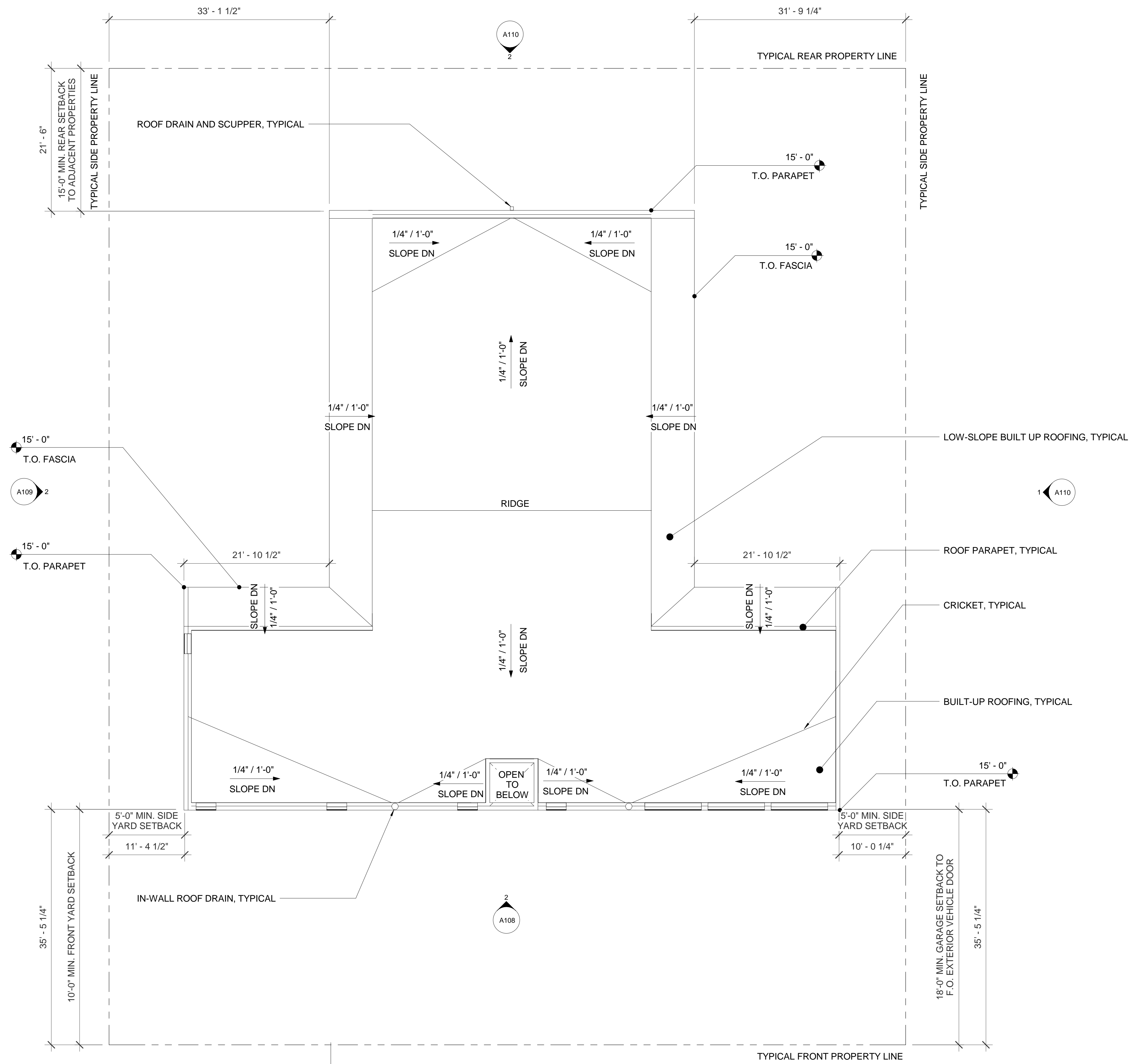
Scale: 1/8" = 1'-0"

Planning Services Submittal 07 . 14 . 14

4,720 GSF HOUSE  
+ 637 GSF GARAGE  
TOTAL FOOTPRINT  
= 5,357 SF

NOTES:

1. Refer to P.D.D. submittal for site and landscape information.
2. Refer to landscape drawings as part of this submittal.



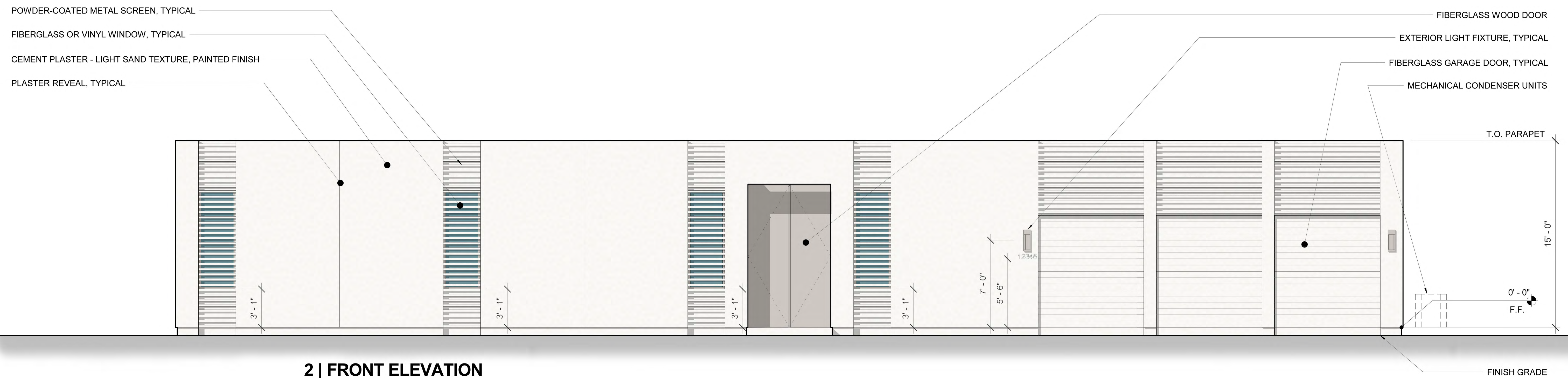
**ROOF PLAN**  
**THE "T"**

Scale: 1/8" = 1'-0"

Planning Services Submittal 07 . 14 . 14



1 | FRONT PERSPECTIVE ELEVATION



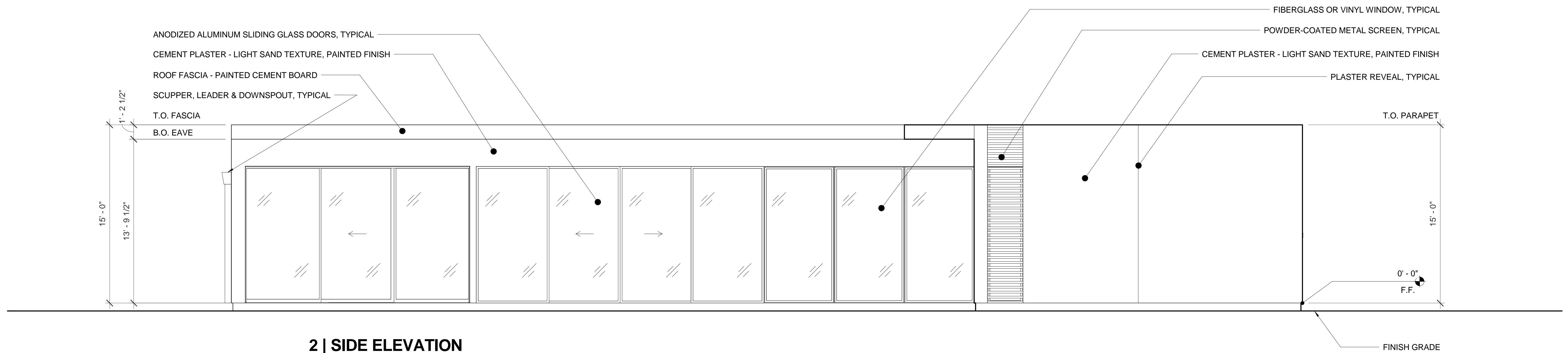
2 | FRONT ELEVATION

NOTES:

1. The proposed elevations are design intent.
2. Minor dimensional adjustments may be made to accommodate constructability, sub-contractor input, and/or budget.
3. Window sizes may have minor adjustments to accommodate requirements of Title 24, and/or standard sizes from the final window supplier at time of bidding.
4. All and any minor revisions will not deviate from the design intent of the project or the vision of the community.



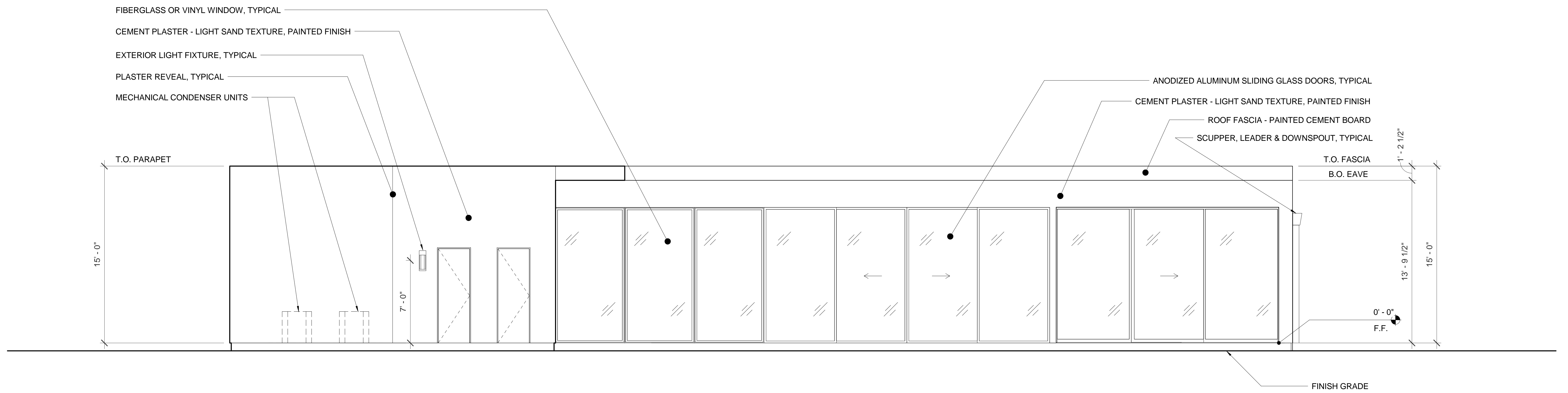
1 | SIDE PERSPECTIVE ELEVATION



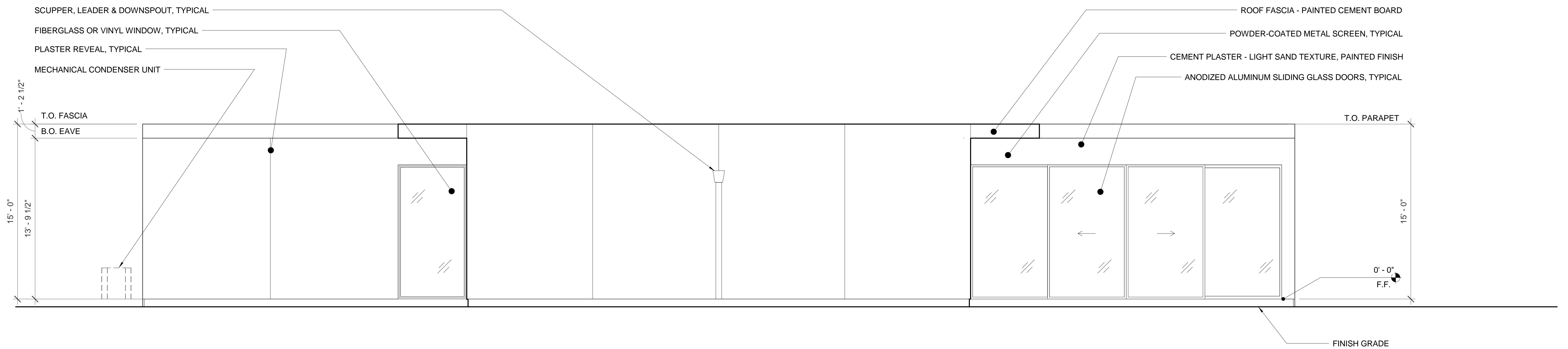
2 | SIDE ELEVATION

NOTES:

1. The proposed elevations are design intent.
2. Minor dimensional adjustments may be made to accommodate constructability, sub-contractor input, and/or budget.
3. Window sizes may have minor adjustments to accommodate requirements of Title 24, and/or standard sizes from the final window supplier at time of bidding.
4. All and any minor revisions will not deviate from the design intent of the project or the vision of the community.



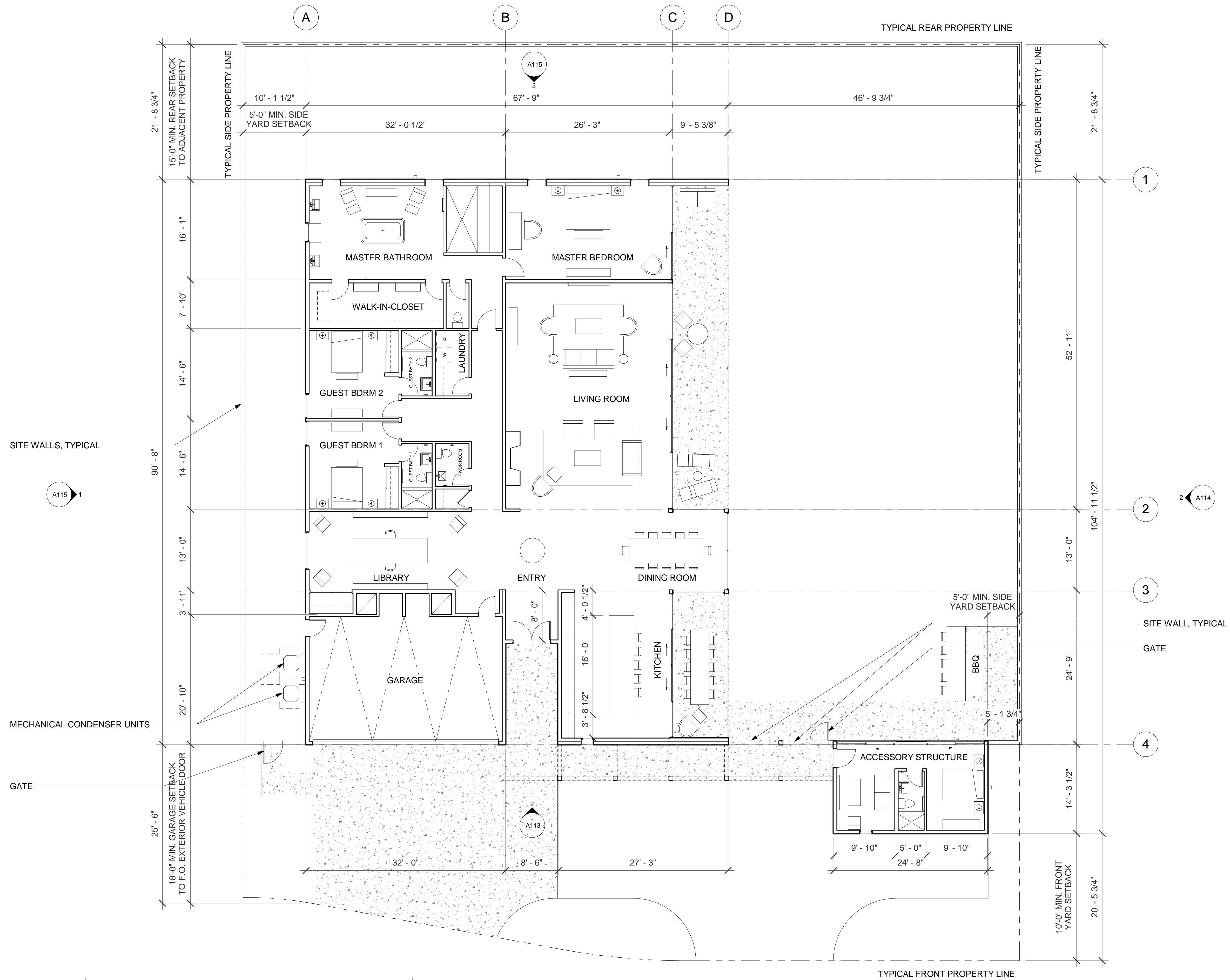
1 | SIDE ELEVATION



2 | REAR ELEVATION

NOTES:

1. The proposed elevations are design intent.
2. Minor dimensional adjustments may be made to accommodate constructability, sub-contractor input, and/or budget.
3. Window sizes may have minor adjustments to accommodate requirements of Title 24, and/or standard sizes from the final window supplier at time of bidding.
4. All and any minor revisions will not deviate from the design intent of the project or the vision of the community.



**FLOOR PLAN  
 THE GALLERY**

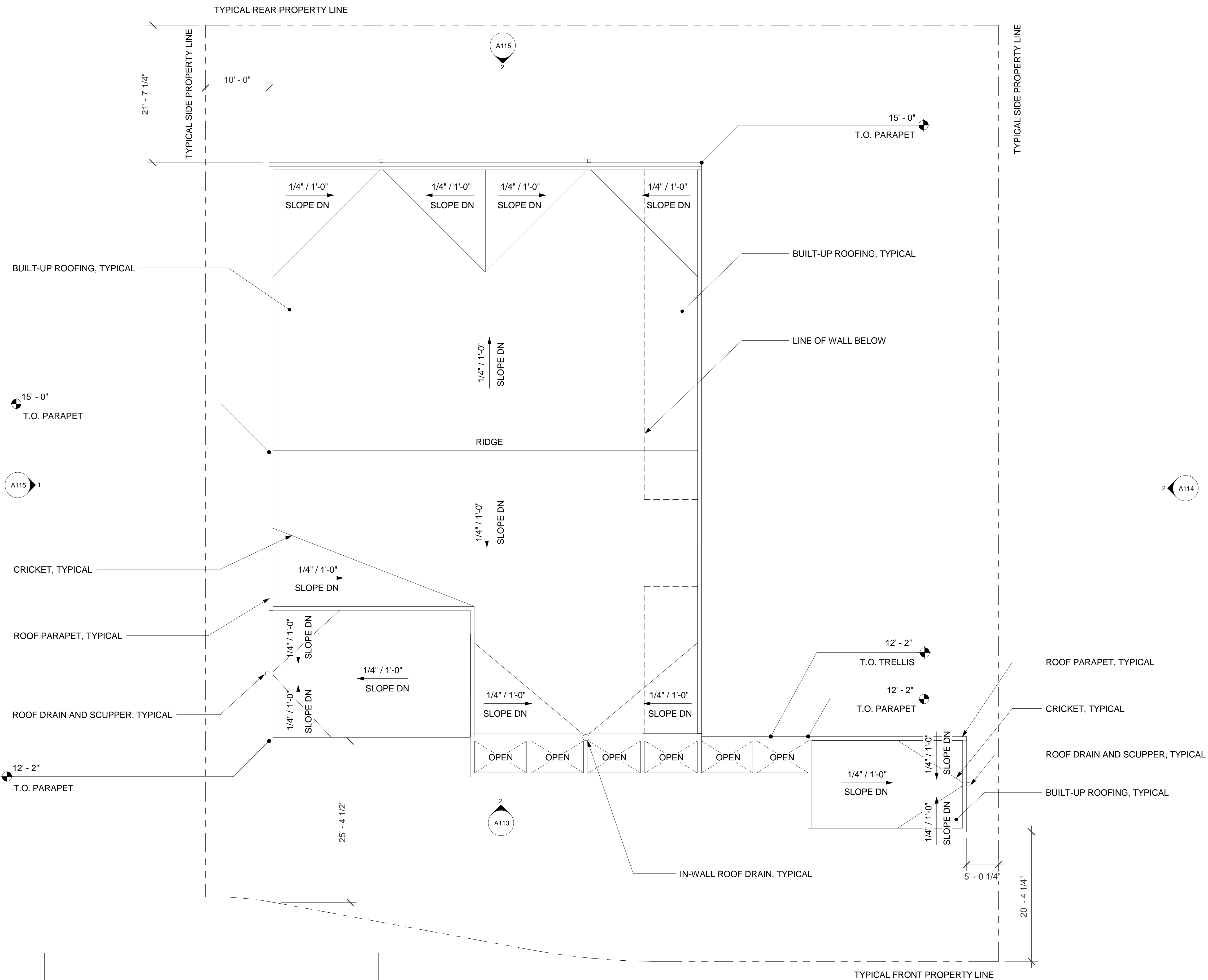
Scale: 1/8" = 1'-0"

Planning Services Submittal 07 . 14 . 14

4,631 GSF HOUSE  
 374 GSF ACCESSORY STRUCTURE  
 TOTAL INTERIOR FOOTPRINT  
 (EXCLUDING GARAGE)  
 = 5,005 SF  
 + 782 GSF GARAGE  
 TOTAL FOOTPRINT  
 = 5,787 SF

NOTES:

1. Refer to P.D.D. submittal for site and landscape information.
2. Refer to landscape drawings as part of this submittal.



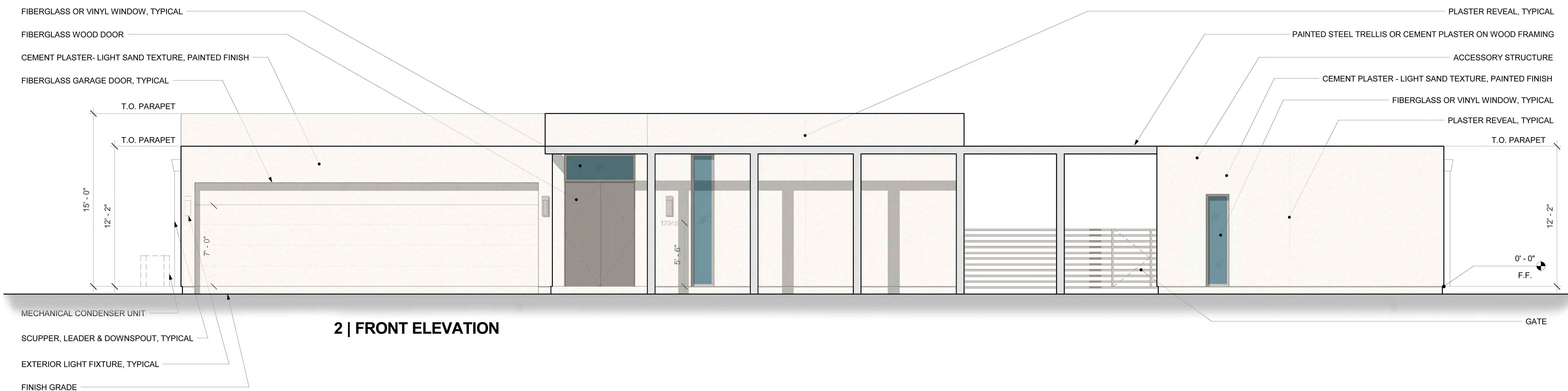
**ROOF PLAN**  
**THE GALLERY**

Scale: 1/8" = 1'-0"

Planning Services Submittal 07 . 14 . 14



1 | FRONT PERSPECTIVE ELEVATION



2 | FRONT ELEVATION

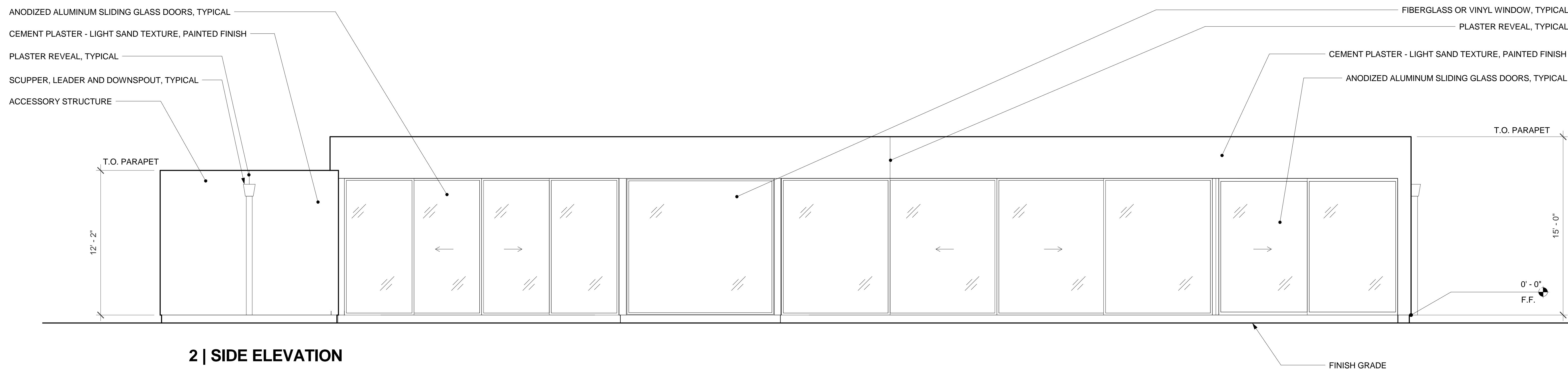
NOTES:

1. The proposed elevations are design intent.
2. Minor dimensional adjustments may be made to accommodate constructability, sub-contractor input, and/or budget.
3. Window sizes may have minor adjustments to accommodate requirements of Title 24, and/or standard sizes from the final window supplier at time of bidding.
4. All and any minor revisions will not deviate from the design intent of the project or the vision of the community.





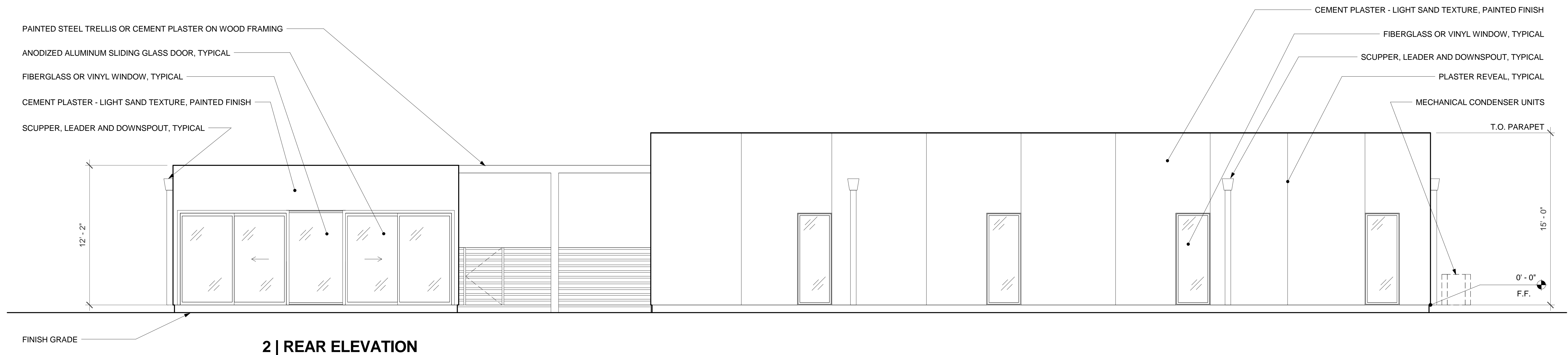
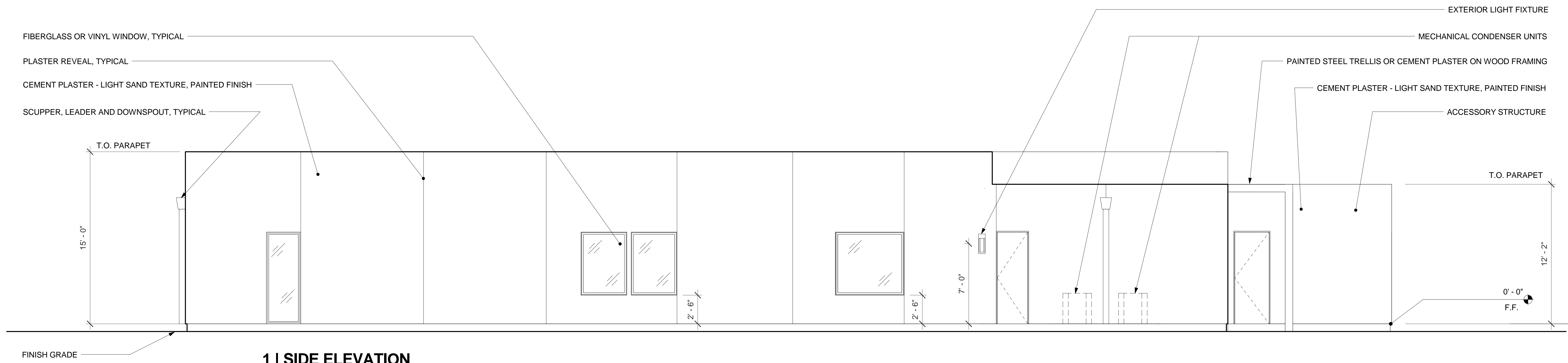
1 | SIDE PERSPECTIVE ELEVATION



2 | SIDE ELEVATION

NOTES:

1. The proposed elevations are design intent.
2. Minor dimensional adjustments may be made to accommodate constructability, sub-contractor input, and/or budget.
3. Window sizes may have minor adjustments to accommodate requirements of Title 24, and/or standard sizes from the final window supplier at time of bidding.
4. All and any minor revisions will not deviate from the design intent of the project or the vision of the community.

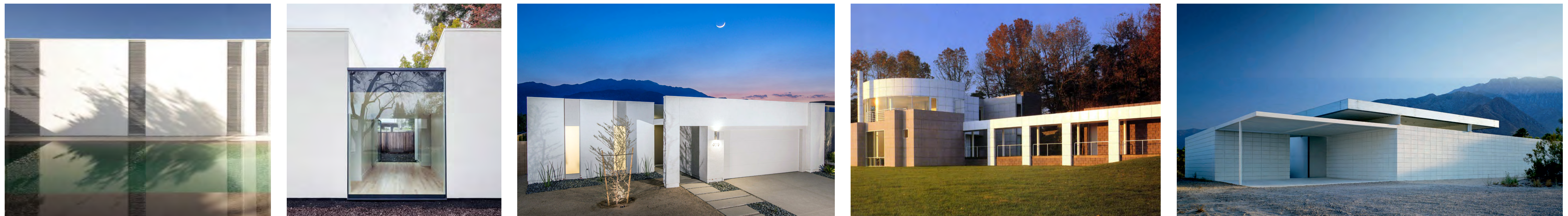


**NOTES:**

1. The proposed elevations are design intent.
2. Minor dimensional adjustments may be made to accommodate constructability, sub-contractor input, and/or budget.
3. Window sizes may have minor adjustments to accommodate requirements of Title 24, and/or standard sizes from the final window supplier at time of bidding.
4. All and any minor revisions will not deviate from the design intent of the project or the vision of the community.



## 1 | EXTERIOR MATERIALS BOARD



## 2 | INSPIRATIONAL IMAGES