

CHRIS PARDO DESIGN
ELEMENTAL ARCHITECTURE

121 Prefontaine Pl. S.
Seattle, WA 98104
(206) 329-1654
1556 N. Palm Canyon Drive
Palm Springs, CA

elementalarchitecture.com

© Chris Pardo Design, LLC 2015
These drawings were prepared for
"The Park Hotel" project in Palm Springs,
CA. They are not intended for use on
any other project.
Standard drawing scale is based on 36x24 sheet.

The Park Hotel
Palm Springs, CA



No.	Date	Issue
1	09/08/15	AAC

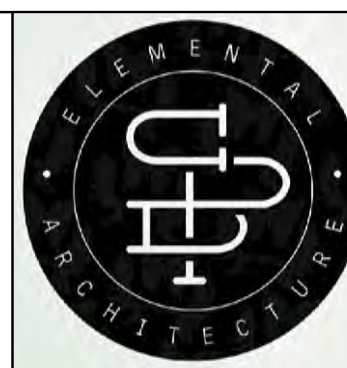
Recler

No. 109

Paseo Plaza on the Corner of Palm Canyon and Tahquitz Canyon

R1.1

SHEET



CHRIS PARDO DESIGN
ELEMENTAL ARCHITECTURE

121 Prefontaine Pl. S.
Seattle, WA 98104
(206) 329-1654

1556 N. Palm Canyon Drive
Palm Springs, CA

elementalarchitecture.com

© Chris Pardo Design, LLC 2015
These drawings were prepared for
"The Park Hotel" project in Palm Springs,
CA. They are not intended for use on
any other project.
Standard drawing scale is based on 36x24 sheet.

The Park Hotel
Palm Springs, CA



No.	Date	Issue
1	09/08/15	AAC

Revised

No. 109

R1.

Looking West down Andreas along Palm Canyon w/ The Park Hotel in the Background

SHEET



CHRIS PARDO DESIGN
ELEMENTAL ARCHITECTURE

121 Prefontaine Pl. S.
Seattle, WA 98104
[206] 329-1654

1556 N. Palm Canyon Drive
Palm Springs, CA

elementalarchitecture.com

© Chris Pardo Design, LLC 2015
These drawings were prepared for
"The Park Hotel" project in Palm Springs,
CA. They are not intended for use on
any other project.
Standard drawing scale is based on 36x24 sheet.

The Park Hotel
Palm Springs, CA

No.	Date	Issue
1	09/08/15	AAC

Revised

No. 109

R1.

SHEET



Looking West down Main St. - Block "B" along Palm Canyon w/ The Park Hotel in the Background



CHRIS PARDO DESIGN
ELEMENTAL ARCHITECTURE

121 Prefontaine Pl. S.
Seattle, WA 98104
(206) 329-1654

1556 N. Palm Canyon Drive
Palm Springs, CA

elementalarchitecture.com

© Chris Pardo Design, LLC 2015
These drawings were prepared for
"The Park Hotel" project in Palm Springs,
CA. They are not intended for use on
any other project.
Standard drawing scale is based on 36x24 sheet.

The Park Hotel
Palm Springs, CA

No.	Date	Issue
1	09/08/15	AAC

Reiler

No. 109

R1.

SHEET



Pedestrian Paseo (Market St.) between Block "B" and The Park Hotel



CHRIS PARDO DESIGN
ELEMENTAL ARCHITECTURE

121 Prefontaine Pl. S.
Seattle, WA 98104
(206) 329-1654

1556 N. Palm Canyon Drive
Palm Springs, CA

elementalarchitecture.com

© Chris Pardo Design, LLC 2015
These drawings were prepared for
The Park Hotel project in Palm Springs,
CA. They are not intended for use on
any other project.
Stated drawing scale is based on 36x24 sheet.

The Park Hotel
Palm Springs, CA



No.	Date	Issue
1	09/08/15	AAC

Overall
Renderings

No. 109

R1.14

Overall View Looking East

SHEET



CHRIS PARDO DESIGN
ELEMENTAL ARCHITECTURE

121 Prefontaine Pl. S.
Seattle, WA 98104
(206) 329-1654

1556 N. Palm Canyon Drive
Palm Springs, CA

elementalarchitecture.com

© Chris Pardo Design, LLC 2015
These drawings were prepared for
The Park Hotel project in Palm Springs,
CA. They are not intended for use on
any other project.
Stated drawing scale is based on 36x24 sheet.

The Park Hotel
Palm Springs, CA

No.	Date	Issue
1	09/08/15	AAC

Overall
Renderings

No. 109

R1.16

SHEET



Overall View Looking Northwest



CHRIS PARDO DESIGN
ELEMENTAL ARCHITECTURE

121 Prefontaine Pl. S.
Seattle, WA 98104
(206) 329-1654
1556 N. Palm Canyon Drive
Palm Springs, CA

elementalarchitecture.com

© Chris Pardo Design, LLC 2015
These drawings were prepared for
"The Park Hotel" project in Palm Springs,
CA. They are not intended for use on
any other project.
Stated drawing scale is based on 36x24 sheet.

The Park Hotel
Palm Springs, CA

No.	Date	Issue
1	09/08/15	AAC

Overall
Renderings

No. 109

R1.17

SHEET

Overall View of Public Spaces



CHRIS PARDO DESIGN
ELEMENTAL ARCHITECTURE

121 Prefontaine Pl. S.
Seattle, WA 98104
(206) 329-1654

1556 N. Palm Canyon Drive
Palm Springs, CA

elementalarchitecture.com

© Chris Pardo Design, LLC 2015
These drawings were prepared for
"The Park Hotel" project in Palm Springs,
CA. They are not intended for use on
any other project.
Stated drawing scale is based on 36x24 sheet.

The Park Hotel
Palm Springs, CA

No. Date Issue
1 09/08/15 AAC

Park Hotel

No. 109

R1.18

SHEET



Southwest Corner Of Belardo And Main



CHRIS PARDO DESIGN

121 Prefontaine Pl. S.
Seattle, WA 98104
[206] 329-1654

1556 N. Palm Canyon Drive
Palm Springs, CA

elementalarchitecture.com
© Chris Pardo Design, LLC 2015
These drawings were prepared for
"The Park Hotel" project in Palm Springs,
CA. They are not intended for use on
any other project.
Standard drawing scale is based on 3/16" = 1'-0"

The Park Hotel
Palm Springs, CA

No.	Date	Issue
1	09/30/15	

Rendering

No. 109

R1.0

SHEET



View Northwest



CHRIS PARDO DESIGN
ELEMENTAL ARCHITECTURE

121 Prefontaine Pl. S.
Seattle, WA 98104
[206] 329-1654

1556 N. Palm Canyon Drive
Palm Springs, CA

elementalarchitecture.com

© Chris Pardo Design, LLC 2015
These drawings were prepared for
"The Park Hotel" project in Palm Springs,
CA. They are not intended for use on
any other project.
Stated drawing scale is based on 36x24 sheet.

The Park Hotel
Palm Springs, CA



No.	Date	Issue
1	10/14/15	

Rendering

No. 109

R1.1

View West

SHEET



CHRIS PARDO DESIGN
ELEMENTAL ARCHITECTURE

121 Prefontaine Pl. S.
Seattle, WA 98104
(206) 329-1654
1556 N. Palm Canyon Drive
Palm Springs, CA

elementalarchitecture.com
© Chris Pardo Design, LLC 2015
These drawings were prepared for
"The Park Hotel" project in Palm Springs,
CA. They are not intended for use on
any other project.
Standard drawing scale is based on 30x42 sheet

The Park Hotel
Palm Springs, CA

No.	Date	Issue
1	09/30/15	

Rendering

No. 109

R1.2

SHEET



Google earth
© 2015 Google

View Southeast



CHRIS PARDO DESIGN
ELEMENTAL ARCHITECTURE

121 Prefontaine Pl. S.
Seattle, WA 98104
[206] 329-1654
1556 N. Palm Canyon Drive
Palm Springs, CA

elementalarchitecture.com
© Chris Pardo Design, LLC 2015
These drawings were prepared for
"The Park Hotel" project in Palm Springs,
CA. They are not intended for use on
any other project.
Standard drawing scale is based on 3/16" = 1'-0"

The Park Hotel
Palm Springs, CA



No.	Date	Issue
1	09/30/15	

Rendering

No. 109

R1.3

View East

SHEET



CHRIS PARDO DESIGN
ELEMENTAL ARCHITECTURE

121 Prefontaine Pl. S.
Seattle, WA 98104
[206] 329-1654
1556 N. Palm Canyon Drive
Palm Springs, CA

© Chris Pardo Design, LLC 2015
These drawings were prepared for
"The Park Hotel" project in Palm Springs,
CA. They are not intended for use on
any other project.
Standard drawing scale is based on 30x60 sheet

The Park Hotel
Palm Springs, CA



No. Date Issue
1 09/30/15

Rendering

No. 109

View North

R1.4

SHEET