

Accessibility Survey



City of Palm Springs Demuth Park

4365 Mesquite Avenue
Palm Springs, CA 92264

Date of Inspection
9/28/2012

Prepared By

Disability Access Consultants

(800) 743-7067

Demuth Park

Parking - Exterior : Parking Lot , Parking Space

**Parking Lot Next To Baseball Fields #7 And 8
Accessible Space**

Parking Lot , Parking Space : No Van Accessible Signage

Finding

There is no additional signage marked "van accessible" at the van accessible parking space.

On-Site Finding None Found

Recommendation

Van accessible parking spaces shall provide additional signage that states "van accessible" .

Recommendation See Recommendation

Costing Info (Estimated)

Install post mounted sign \$250

Code Reference ADA 502, 502.6

Record Number 19114



Demuth Park

Parking - Exterior : Parking Lot , Parking Space

**Parking Lot Next To Baseball Fields #7 And 8
Accessible Space**

Parking Lot , Parking Space : Access Aisle Width

Finding

The access aisle does not meet the minimum required width.

On-Site Finding 57.00 inches

Recommendation

Re-stripe the access aisle to meet the minimum required width and length for the space type.

Recommendation At least 96.00 inches

Costing Info (Estimated)

Stripe an access aisle \$250

Code Reference ADA 208, 502.2

Record Number 19116



Parking - Exterior : Parking Lot , Parking Space

**Parking Lot Next To Baseball Fields #7 And 8
Accessible Space**

Parking Lot , Parking Space : Access Aisle on Wrong side

Finding

There is an accessible parking space designated in the parking lot. The access aisle is not located on the passenger's side (right side) of the parking space.

On-Site Finding See Above

Recommendation

Provide a compliant access aisle on the passenger side of the accessible parking space.

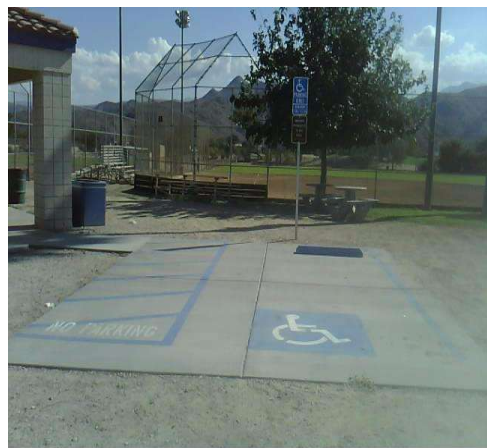
Recommendation See Recommendation

Costing Info (Estimated)

Stripe an access aisle \$250

Code Reference ADA 502

Record Number 19115



Demuth Park

Parking - Exterior : Parking Lot , Warning Signage

**Parking Lot Next To Baseball Fields #7 And 8
Accessible Space**

Parking Lot , Warning Signage : Parking Lot Warnings

Finding

There is no \$250.00 fine sign at the parking space.

On-Site Finding Not Found

Recommendation

Provide a \$250.00 fine sign at the parking space.

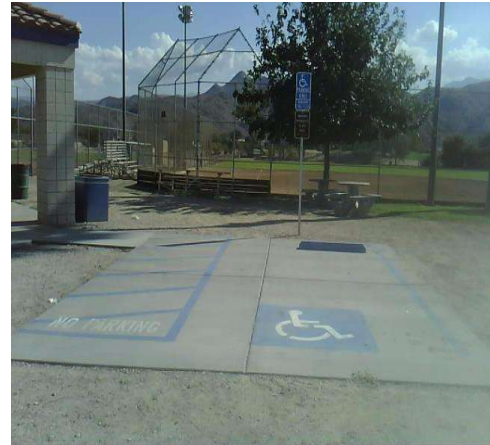
Recommendation See Recommendation

Costing Info (Estimated)

Install signage \$300

Code Reference CA 11B-502.8

Record Number 19113



Demuth Park

Parking - Exterior : Parking Lot , Warning Signage

**Parking Lot Next To Baseball Fields #7 And 8
Warning Sign**

Parking Lot , Warning Signage : Parking Lot
Warning Sign Blanks Not Filled

Finding

There is warning signage posted regarding unauthorized use of accessible parking spaces in the parking lot, though the blank spaces which should furnish the point of contact and telephone number for reclaiming towed vehicles have been left blank.

On-Site Finding Sign not Filled

Recommendation

Fill in the blank spaces which are required to furnish the point of contact and telephone number for reclaiming towed vehicles with the appropriate information as a permanent part of the sign and maintain the currency of the information.

Recommendation See Recommendation



Costing Info (Estimated)

Install post mounted sign \$250

Code Reference CA 11B-502.8.2

Record Number 19118

Demuth Park

Parking - Exterior : Parking Lot

Parking Lot Next To Baseball Fields #7 And 8

Parking Lot : Less Than Minimum Required
Parking Spaces

Finding

There are not enough accessible parking spaces marked in the parking lot and therefore does not meet the minimum number required.

On-Site Finding 1.00 spaces

Recommendation

Re-stripe any existing parking spaces marked accessible and create additional accessible parking spaces. Designate one parking space as "van-accessible".

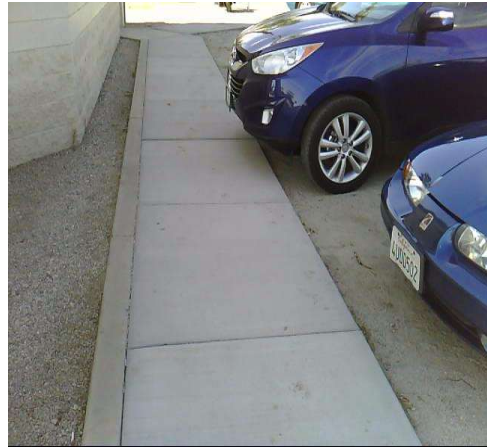
Recommendation At least 2.00 spaces

Costing Info (Estimated)

Paint ground markings and install a post mounted sign \$370

Code Reference ADA 208, 208.2,CA 11B-208.2

Record Number 19111



Parking - Exterior : Parking Lot , Parking Lot

Parking Lot Next To Baseball Fields #7 And 8

Parking Lot , Parking Lot : Vehicles Encroach
Into Path of Travel

Finding

There is no device at the head of the general parking spaces to prevent vehicles from encroaching into walkways.

On-Site Finding None Found

Recommendation

Install a wheel stop at the head of the general parking spaces.

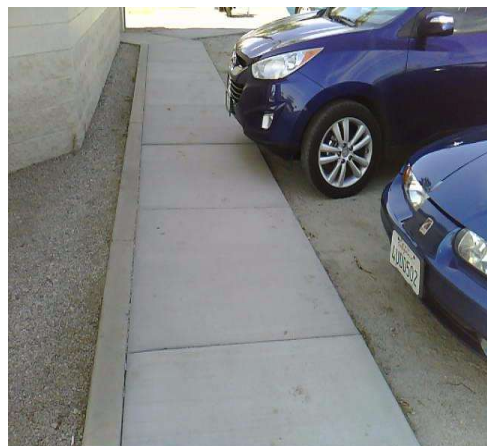
Recommendation See Recommendation

Costing Info (Estimated)

Add a wheel stop \$148

Code Reference ADA 502, 502.7,CA 11B-502.7.2

Record Number 19112



Demuth Park

Parking - Exterior : Parking Lot , Parking Space

Parking Lot Next To Baseball Fields 1-6

Left Accessible Space

Parking Lot , Parking Space : Access Aisle Does Not Say "No Parking"

Finding

The access aisle does not contain the wording "No Parking" painted on surface within the access aisle in white letters.

On-Site Finding None Found

Recommendation

Paint "NO PARKING" in 12 inch white letters.

Recommendation See Recommendation

Costing Info (Estimated)

Stripe an access aisle \$250

Code Reference CA 11B-502.3.3

Record Number 19163



Parking - Exterior : Parking Lot , Warning Signage

Parking Lot Next To Baseball Fields 1-6

Left Accessible Space

Parking Lot , Warning Signage : Parking Lot Warnings

Finding

There is no \$250.00 fine sign at the parking space.

On-Site Finding Not Found

Recommendation

Provide a \$250.00 fine sign at the parking space.

Recommendation See Recommendation

Costing Info (Estimated)

Install signage \$300

Code Reference CA 11B-502.8

Record Number 19162



Demuth Park

Parking - Exterior : Parking Lot , Parking Space

Parking Lot Next To Baseball Fields 1-6

Left Accessible Space

Parking Lot , Parking Space : Outline is Faded, Damaged or Missing

Finding

The accessible parking space outline is faded, damaged, missing or otherwise not viewable.

On-Site Finding Faded or Damaged

Recommendation

Re-stripe the existing parking space marked as accessible to define the width of the space.

Recommendation See Recommendation

Costing Info (Estimated)

Re-stripe existing parking space \$350

Code Reference ADA 502, 502.2,CA 11B-502.2

Record Number 19159



Parking - Exterior : Parking Lot , Parking Space

Parking Lot Next To Baseball Fields 1-6

Left Accessible Space

Parking Lot , Parking Space : Parking Space Slope

Finding

The surface of the accessible parking space has a slope greater than allowed.

On-Site Finding 2.40 percent

Recommendation

Pave the parking lot to provide a level surface.

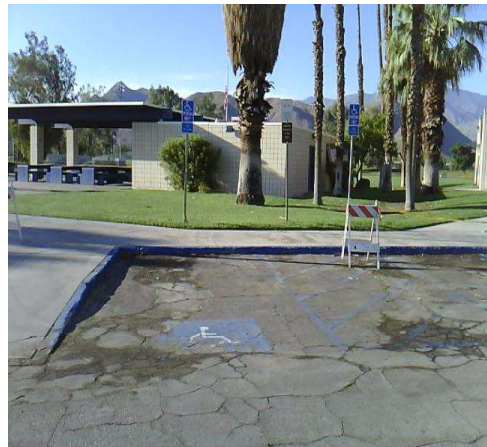
Recommendation Up to 2.00 percent

Costing Info (Estimated)

Repave surface to correct slope and re-stripe \$3,800

Code Reference ADA 502, 502.4,CA 11B-502.4

Record Number 19160



Demuth Park

Parking - Exterior : Parking Lot , Parking Space

Parking Lot Next To Baseball Fields 1-6

Left Accessible Space

Parking Lot , Parking Space : Vehicle Encroaches Into Path of Travel

Finding

There is no device at the head of the accessible parking space to prevent vehicles from encroaching into accessible aisles or walkways.

On-Site Finding None Found

Recommendation

Install a wheel stop at the head of the accessible parking space.

Recommendation See Recommendation

Costing Info (Estimated)

Add a wheel stop \$250

Code Reference ADA 502, 502.7, CA 11B-502.7.2

Record Number 19161



Parking - Exterior : Parking Lot , Warning Signage

Parking Lot Next To Baseball Fields 1-6

Right Accessible Space

Parking Lot , Warning Signage : Parking Lot Warnings

Finding

There is no \$250.00 fine sign at the parking space.

On-Site Finding Not Found

Recommendation

Provide a \$250.00 fine sign at the parking space.

Recommendation See Recommendation

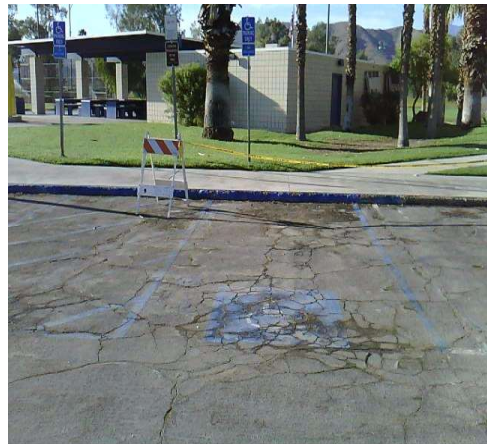
Costing Info (Estimated)

Install signage \$300

Code Reference CA 11B-502.8

Notes : Remove "Van Accessible" signage.

Record Number 19158



Demuth Park

Parking - Exterior : Parking Lot , Parking Space

Parking Lot Next To Baseball Fields 1-6

Right Accessible Space

Parking Lot , Parking Space : Vehicle Encroaches Into Path of Travel

Finding

There is no device at the head of the accessible parking space to prevent vehicles from encroaching into accessible aisles or walkways.

On-Site Finding None Found

Recommendation

Install a wheel stop at the head of the accessible parking space.

Recommendation See Recommendation

Costing Info (Estimated)

Add a wheel stop \$250

Code Reference ADA 502, 502.7,CA 11B-502.7.2

Notes : Remove "Van Accessible" signage.

Record Number 19156



Parking - Exterior : Parking Lot , Parking Space

Parking Lot Next To Baseball Fields 1-6

Right Accessible Space

Parking Lot , Parking Space : Parking Space Width

Finding

The accessible parking space does not meet the minimum requirements for width.

On-Site Finding 102.50 inches

Recommendation

Re-stripe the accessible parking space.

Recommendation At least 108.00 inches

Costing Info (Estimated)

Re-stripe existing parking space \$350

Code Reference ADA 502, 502.2,CA 11B-502.2

Notes : Remove "Van Accessible" signage.

Record Number 19155



Demuth Park

Parking - Exterior : Parking Lot , Parking Space

Parking Lot Next To Baseball Fields 1-6

Right Accessible Space

Parking Lot , Parking Space : Must Travel Behind Parked Cars

Finding

The location of the accessible parking spaces requires individuals with disabilities to travel behind parked cars other than their own.

On-Site Finding See Above

Recommendation

Stripe an access aisle at the head of the accessible parking spaces, install a wheel stop at the head of the accessible parking spaces and at the general parking spaces. Wheel stops shall be used to prevent vehicles from encroaching into access aisles or walkways, but shall not present additional encroachment into those areas.

Recommendation See Recommendation



Costing Info (Estimated)

Install crosswalk \$1,100

Code Reference ADA 502.3,CA 11B-502.7.1

Notes : Remove "Van Accessible" signage.

Record Number 19157

Demuth Park

Parking - Exterior : Parking Lot

Parking Lot Next To Baseball Fields 1-6

Parking Lot : Less Than Minimum Required
Parking Spaces

Finding

There are not enough accessible parking spaces marked in the parking lot and therefore does not meet the minimum number required.

On-Site Finding 2.00 spaces

Recommendation

Re-stripe any existing parking spaces marked accessible and create additional accessible parking spaces. Designate one parking space as "van-accessible".

Recommendation At least 6.00 spaces

Costing Info (Estimated)

Paint ground markings and install a post mounted sign \$370

Code Reference ADA 208, 208.2,CA 11B-208.2

Record Number 19152



Demuth Park

Parking - Exterior : Parking Lot , Warning Signage

Parking Lot Next To Baseball Fields 1-6

Parking Lot , Warning Signage : No Parking Lot Warning Sign

Finding

There is no warning signage posted regarding unauthorized use of accessible parking spaces in the parking lot.

On-Site Finding None Found

Recommendation

Post a sign in a conspicuous place to the entrance of the parking lot, or immediately adjacent to and visible from each accessible parking space. The warning sign shall measure at least 17 inches by 22 inches in size and consist of lettering at least 1 inch in height that clearly and conspicuously states the following; "Unauthorized vehicles parked in designated accessible spaces not displaying distinguishing placards or license plates issued for persons with disabilities will be towed away at owner's expense. Towed vehicles may be reclaimed at ____ or by telephoning ____ ." Fill in the blank spaces with appropriate information as a permanent part of the sign and maintain the currency of the information.

Recommendation See Recommendation

Costing Info (Estimated)

Install post mounted sign \$250

Code Reference CA 11B-502.8

Record Number 19154



Demuth Park

Parking - Exterior : Parking Lot , Parking Lot

Parking Lot Next To Baseball Fields 1-6

Parking Lot , Parking Lot : Vehicles Encroach Into Path of Travel

Finding

There is no device at the head of the general parking spaces to prevent vehicles from encroaching into walkways.

On-Site Finding None Found

Recommendation

Install a wheel stop at the head of the general parking spaces.

Recommendation See Recommendation

Costing Info (Estimated)

Add a wheel stop \$148

Code Reference ADA 502, 502.7,CA 11B-502.7.2

Record Number 19153



Demuth Park

Parking - Exterior : Parking Lot , Parking Space

Parking Lot Next To Multi-Use Fields

1st Accessible Space From Left

Parking Lot , Parking Space : Access Aisle Width

Finding

The access aisle does not meet the minimum required width.

On-Site Finding 59.00 inches

Recommendation

Re-stripe the access aisle to meet the minimum required width and length for the space type.

Recommendation At least 96.00 inches

Costing Info (Estimated)

Stripe an access aisle \$250

Code Reference ADA 208, 502.2

Record Number 19457



Parking - Exterior : Parking Lot , Parking Space

Parking Lot Next To Multi-Use Fields

1st Accessible Space From Left

Parking Lot , Parking Space : Parking Space ISA Size

Finding

Pavement markings at the designated accessible parking spaces are not complaint.

On-Site Finding 32.00 inches

Recommendation

Provide a compliant pavement marking at the designated accessible parking space.

Recommendation At least 36.00 inches

Costing Info (Estimated)

Stripe an access aisle \$220

Code Reference CA 11B-502.6.4

Record Number 19455



Demuth Park

Parking - Exterior : Parking Lot , Parking Space

Parking Lot Next To Multi-Use Fields

1st Accessible Space From Left

Parking Lot , Parking Space : Access Aisle Does Not Say "No Parking"

Finding

The access aisle does not contain the wording "No Parking" painted on surface within the access aisle in white letters.

On-Site Finding None Found

Recommendation

Paint "NO PARKING" in 12 inch white letters.

Recommendation See Recommendation

Costing Info (Estimated)

Stripe an access aisle \$250

Code Reference CA 11B-502.3.3

Record Number 19458



Parking - Exterior : Parking Lot , Parking Space

Parking Lot Next To Multi-Use Fields

1st Accessible Space From Left

Parking Lot , Parking Space : Parking Space Accessible Signage Height

Finding

The bottom edge of the post-mounted signage designating the accessible parking space is not at the required height.

On-Site Finding 40.25 inches

Recommendation

Modify the height or replace the post-mounted signage designating the accessible parking space. The sign shall be located so that it cannot be obscured by a vehicle parked in the space.

Recommendation At least 80.00 inches

Costing Info (Estimated)

Modify or replace post mounted sign \$158

Code Reference ADA 502, 502.6,CA 11B-502.6

Record Number 19456



Demuth Park

Parking - Exterior : Parking Lot , Parking Space

Parking Lot Next To Multi-Use Fields

1st Accessible Space From Left

Parking Lot , Parking Space : ISA is Faded or Damaged

Finding

ISA marking is faded and not viewable.

On-Site Finding Faded or Damaged

Recommendation

Repaint the ISA marking in the parking space.

Recommendation See Recommendation

Costing Info (Estimated)

Re-stripe existing parking space \$117

Code Reference ADA 502,CA 11B-502.6.4

Record Number 19454



Parking - Exterior : Parking Lot , Warning Signage

Parking Lot Next To Multi-Use Fields

1st Accessible Space From Left

Parking Lot , Warning Signage : Parking Lot Warnings

Finding

There is no \$250.00 fine sign at the parking space.

On-Site Finding Not Found

Recommendation

Provide a \$250.00 fine sign at the parking space.

Recommendation See Recommendation

Costing Info (Estimated)

Install signage \$300

Code Reference CA 11B-502.8

Record Number 19453



Demuth Park

Parking - Exterior : Parking Lot , Parking Space

Parking Lot Next To Multi-Use Fields

1st Accessible Space From Left

Parking Lot , Parking Space : Outline is Faded, Damaged or Missing

Finding

The accessible parking space outline is faded, damaged, missing or otherwise not viewable.

On-Site Finding Faded or Damaged

Recommendation

Re-stripe the existing parking space marked as accessible to define the width of the space.

Recommendation See Recommendation

Costing Info (Estimated)

Re-stripe existing parking space \$350

Code Reference ADA 502, 502.2, CA 11B-502.2

Record Number 19450



Demuth Park

Parking - Exterior : Parking Lot , Parking Space

Parking Lot Next To Multi-Use Fields

1st Accessible Space From Left

Parking Lot , Parking Space : Must Travel Behind Parked Cars

Finding

The location of the accessible parking spaces requires individuals with disabilities to travel behind parked cars other than their own.

On-Site Finding See Above

Recommendation

Stripe an access aisle at the head of the accessible parking spaces, install a wheel stop at the head of the accessible parking spaces and at the general parking spaces. Wheel stops shall be used to prevent vehicles from encroaching into access aisles or walkways, but shall not present additional encroachment into those areas.

Recommendation See Recommendation



Costing Info (Estimated)

Install crosswalk \$1,100

Code Reference ADA 502.3,CA 11B-502.7.1

Record Number 19452

Demuth Park

Parking - Exterior : Parking Lot , Parking Space

Parking Lot Next To Multi-Use Fields

1st Accessible Space From Left

Parking Lot , Parking Space : Vehicle Encroaches Into Path of Travel

Finding

There is no device at the head of the accessible parking space to prevent vehicles from encroaching into accessible aisles or walkways.

On-Site Finding None Found

Recommendation

Install a wheel stop at the head of the accessible parking space.

Recommendation See Recommendation

Costing Info (Estimated)

Add a wheel stop \$250

Code Reference ADA 502, 502.7, CA 11B-502.7.2

Record Number 19451



Parking - Exterior : Parking Lot , Parking Space

Parking Lot Next To Multi-Use Fields

2nd Accessible Space From Left

Parking Lot , Parking Space : Parking Space ISA Size

Finding

Pavement markings at the designated accessible parking spaces are not complaint.

On-Site Finding 31.50 inches

Recommendation

Provide a compliant pavement marking at the designated accessible parking space.

Recommendation At least 36.00 inches

Costing Info (Estimated)

Stripe an access aisle \$220

Code Reference CA 11B-502.6.4

Notes : Remove "Van Accessible" signage.

Record Number 19433



Demuth Park

Parking - Exterior : Parking Lot , Parking Space

Parking Lot Next To Multi-Use Fields

2nd Accessible Space From Left

Parking Lot , Parking Space : Parking Space
Accessible Signage Height

Finding

The bottom edge of the post-mounted signage designating the accessible parking space is not at the required height.

On-Site Finding 26.00 inches

Recommendation

Modify the height or replace the post-mounted signage designating the accessible parking space. The sign shall be located so that it cannot be obscured by a vehicle parked in the space.

Recommendation At least 80.00 inches

Costing Info (Estimated)

Modify or replace post mounted sign \$158

Code Reference ADA 502, 502.6,CA 11B-502.6

Notes : Remove "Van Accessible" signage.

Record Number 19434



Demuth Park

Parking - Exterior : Parking Lot , Parking Space

Parking Lot Next To Multi-Use Fields

2nd Accessible Space From Left

Parking Lot , Parking Space : ISA is Faded or Damaged

Finding

ISA marking is faded and not viewable.

On-Site Finding Faded or Damaged

Recommendation

Repaint the ISA marking in the parking space.

Recommendation See Recommendation

Costing Info (Estimated)

Re-stripe existing parking space \$117

Code Reference ADA 502,CA 11B-502.6.4

Notes : Remove "Van Accessible" signage.

Record Number 19432



Demuth Park

Parking - Exterior : Parking Lot , Warning Signage

Parking Lot Next To Multi-Use Fields

2nd Accessible Space From Left

Parking Lot , Warning Signage : Parking Lot Warnings

Finding

There is no \$250.00 fine sign at the parking space.

On-Site Finding Not Found

Recommendation

Provide a \$250.00 fine sign at the parking space.

Recommendation See Recommendation

Costing Info (Estimated)

Install signage \$300

Code Reference CA 11B-502.8

Notes : Remove "Van Accessible" signage.

Record Number 19431



Parking - Exterior : Parking Lot , Parking Space

Parking Lot Next To Multi-Use Fields

2nd Accessible Space From Left

Parking Lot , Parking Space : Outline is Faded, Damaged or Missing

Finding

The accessible parking space outline is faded, damaged, missing or otherwise not viewable.

On-Site Finding Faded or Damaged

Recommendation

Re-stripe the existing parking space marked as accessible to define the width of the space.

Recommendation See Recommendation

Costing Info (Estimated)

Re-stripe existing parking space \$350

Code Reference ADA 502, 502.2, CA 11B-502.2

Notes : Remove "Van Accessible" signage.

Record Number 19429



Demuth Park

Parking - Exterior : Parking Lot , Parking Space

Parking Lot Next To Multi-Use Fields

2nd Accessible Space From Left

Parking Lot , Parking Space : Must Travel Behind Parked Cars

Finding

The location of the accessible parking spaces requires individuals with disabilities to travel behind parked cars other than their own.

On-Site Finding See Above

Recommendation

Stripe an access aisle at the head of the accessible parking spaces, install a wheel stop at the head of the accessible parking spaces and at the general parking spaces. Wheel stops shall be used to prevent vehicles from encroaching into access aisles or walkways, but shall not present additional encroachment into those areas.

Recommendation See Recommendation



Costing Info (Estimated)

Install crosswalk \$1,100

Code Reference ADA 502.3,CA 11B-502.7.1

Notes : Remove "Van Accessible" signage.

Record Number 19430

Demuth Park

Parking - Exterior : Parking Lot , Parking Space

Parking Lot Next To Multi-Use Fields

3rd Accessible Space From Left

Parking Lot , Parking Space : Access Aisle is Faded or Damaged

Finding

The access aisle markings are faded, damaged, or otherwise not viewable.

On-Site Finding None Found

Recommendation

Re-stripe the access aisle so as to discourage parking.

Recommendation See Recommendation

Costing Info (Estimated)

Re-stripe existing parking space \$250

Code Reference ADA 502.3, 502.3.3, CA 11B-502.3

Record Number 19449



Demuth Park

Parking - Exterior : Parking Lot , Parking Space

Parking Lot Next To Multi-Use Fields

3rd Accessible Space From Left

Parking Lot , Parking Space : Parking Space ISA Size

Finding

Pavement markings at the designated accessible parking spaces are not complaint.

On-Site Finding 32.00 inches

Recommendation

Provide a compliant pavement marking at the designated accessible parking space.

Recommendation At least 36.00 inches

Costing Info (Estimated)

Stripe an access aisle \$220

Code Reference CA 11B-502.6.4

Record Number 19446



Parking - Exterior : Parking Lot , Parking Space

Parking Lot Next To Multi-Use Fields

3rd Accessible Space From Left

Parking Lot , Parking Space : Parking Space Accessible Signage Height

Finding

The bottom edge of the post-mounted signage designating the accessible parking space is not at the required height.

On-Site Finding 29.00 inches

Recommendation

Modify the height or replace the post-mounted signage designating the accessible parking space. The sign shall be located so that it cannot be obscured by a vehicle parked in the space.

Recommendation At least 80.00 inches

Costing Info (Estimated)

Modify or replace post mounted sign \$158

Code Reference ADA 502, 502.6,CA 11B-502.6

Record Number 19447



Demuth Park

Parking - Exterior : Parking Lot , Parking Space

Parking Lot Next To Multi-Use Fields

3rd Accessible Space From Left

Parking Lot , Parking Space : Access Aisle Width

Finding

The access aisle does not meet the minimum required width.

On-Site Finding 59.50 inches

Recommendation

Re-stripe the access aisle to meet the minimum required width and length for the space type.

Recommendation At least 96.00 inches

Costing Info (Estimated)

Stripe an access aisle \$250

Code Reference ADA 208, 502.2

Record Number 19448



Parking - Exterior : Parking Lot , Warning Signage

Parking Lot Next To Multi-Use Fields

3rd Accessible Space From Left

Parking Lot , Warning Signage : Parking Lot Warnings

Finding

There is no \$250.00 fine sign at the parking space.

On-Site Finding Not Found

Recommendation

Provide a \$250.00 fine sign at the parking space.

Recommendation See Recommendation

Costing Info (Estimated)

Install signage \$300

Code Reference CA 11B-502.8

Record Number 19445



Demuth Park

Parking - Exterior : Parking Lot , Parking Space

Parking Lot Next To Multi-Use Fields

3rd Accessible Space From Left

Parking Lot , Parking Space : Vehicle Encroaches Into Path of Travel

Finding

There is no device at the head of the accessible parking space to prevent vehicles from encroaching into accessible aisles or walkways.

On-Site Finding None Found

Recommendation

Install a wheel stop at the head of the accessible parking space.

Recommendation See Recommendation

Costing Info (Estimated)

Add a wheel stop \$250

Code Reference ADA 502, 502.7,CA 11B-502.7.2

Record Number 19443



Parking - Exterior : Parking Lot , Parking Space

Parking Lot Next To Multi-Use Fields

3rd Accessible Space From Left

Parking Lot , Parking Space : Parking Space Width

Finding

The accessible parking space does not meet the minimum requirements for width.

On-Site Finding 102.75 inches

Recommendation

Re-stripe the accessible parking space.

Recommendation At least 108.00 inches

Costing Info (Estimated)

Re-stripe existing parking space \$350

Code Reference ADA 502, 502.2,CA 11B-502.2

Record Number 19442



Demuth Park

Parking - Exterior : Parking Lot , Parking Space

Parking Lot Next To Multi-Use Fields

3rd Accessible Space From Left

Parking Lot , Parking Space : Must Travel Behind Parked Cars

Finding

The location of the accessible parking spaces requires individuals with disabilities to travel behind parked cars other than their own.

On-Site Finding See Above

Recommendation

Stripe an access aisle at the head of the accessible parking spaces, install a wheel stop at the head of the accessible parking spaces and at the general parking spaces. Wheel stops shall be used to prevent vehicles from encroaching into access aisles or walkways, but shall not present additional encroachment into those areas.

Recommendation See Recommendation



Costing Info (Estimated)

Install crosswalk \$1,100

Code Reference ADA 502.3,CA 11B-502.7.1

Record Number 19444

Demuth Park

Parking - Exterior : Parking Lot , Parking Space

Parking Lot Next To Multi-Use Fields

4th Accessible Space From Left

Parking Lot , Parking Space : Parking Space
Accessible Signage Height

Finding

The bottom edge of the post-mounted signage designating the accessible parking space is not at the required height.

On-Site Finding 30.37 inches

Recommendation

Modify the height or replace the post-mounted signage designating the accessible parking space. The sign shall be located so that it cannot be obscured by a vehicle parked in the space.

Recommendation At least 80.00 inches

Costing Info (Estimated)

Modify or replace post mounted sign \$158

Code Reference ADA 502, 502.6,CA 11B-502.6

Notes : Remove "Van Accessible" signage.

Record Number 19441



Demuth Park

Parking - Exterior : Parking Lot , Parking Space

Parking Lot Next To Multi-Use Fields

4th Accessible Space From Left

Parking Lot , Parking Space : Parking Space ISA Size

Finding

Pavement markings at the designated accessible parking spaces are not complaint.

On-Site Finding 31.00 inches

Recommendation

Provide a compliant pavement marking at the designated accessible parking space.

Recommendation At least 36.00 inches

Costing Info (Estimated)

Stripe an access aisle \$220

Code Reference CA 11B-502.6.4

Notes : Remove "Van Accessible" signage.

Record Number 19440



Parking - Exterior : Parking Lot , Parking Space

Parking Lot Next To Multi-Use Fields

4th Accessible Space From Left

Parking Lot , Parking Space : ISA is Faded or Damaged

Finding

ISA marking is faded and not viewable.

On-Site Finding Faded or Damaged

Recommendation

Repaint the ISA marking in the parking space.

Recommendation See Recommendation

Costing Info (Estimated)

Re-stripe existing parking space \$117

Code Reference ADA 502,CA 11B-502.6.4

Notes : Remove "Van Accessible" signage.

Record Number 19439



Demuth Park

Parking - Exterior : Parking Lot , Parking Space

Parking Lot Next To Multi-Use Fields

4th Accessible Space From Left

Parking Lot , Parking Space : Outline is Faded, Damaged or Missing

Finding

The accessible parking space outline is faded, damaged, missing or otherwise not viewable.

On-Site Finding Faded or Damaged

Recommendation

Re-stripe the existing parking space marked as accessible to define the width of the space.

Recommendation See Recommendation

Costing Info (Estimated)

Re-stripe existing parking space \$350

Code Reference ADA 502, 502.2, CA 11B-502.2

Notes : Remove "Van Accessible" signage.

Record Number 19435



Parking - Exterior : Parking Lot , Warning Signage

Parking Lot Next To Multi-Use Fields

4th Accessible Space From Left

Parking Lot , Warning Signage : Parking Lot Warnings

Finding

There is no \$250.00 fine sign at the parking space.

On-Site Finding Not Found

Recommendation

Provide a \$250.00 fine sign at the parking space.

Recommendation See Recommendation

Costing Info (Estimated)

Install signage \$300

Code Reference CA 11B-502.8

Notes : Remove "Van Accessible" signage.

Record Number 19438



Demuth Park

Parking - Exterior : Parking Lot , Parking Space

Parking Lot Next To Multi-Use Fields

4th Accessible Space From Left

Parking Lot , Parking Space : Must Travel Behind Parked Cars

Finding

The location of the accessible parking spaces requires individuals with disabilities to travel behind parked cars other than their own.

On-Site Finding See Above

Recommendation

Stripe an access aisle at the head of the accessible parking spaces, install a wheel stop at the head of the accessible parking spaces and at the general parking spaces. Wheel stops shall be used to prevent vehicles from encroaching into access aisles or walkways, but shall not present additional encroachment into those areas.

Recommendation See Recommendation



Costing Info (Estimated)

Install crosswalk \$1,100

Code Reference ADA 502.3,CA 11B-502.7.1

Notes : Remove "Van Accessible" signage.

Record Number 19437

Demuth Park

Parking - Exterior : Parking Lot , Parking Space

Parking Lot Next To Multi-Use Fields

4th Accessible Space From Left

Parking Lot , Parking Space : Vehicle
Encroaches Into Path of Travel

Finding

There is no device at the head of the accessible parking space to prevent vehicles from encroaching into accessible aisles or walkways.

On-Site Finding None Found

Recommendation

Install a wheel stop at the head of the accessible parking space.

Recommendation See Recommendation

Costing Info (Estimated)

Add a wheel stop \$250

Code Reference ADA 502, 502.7,CA 11B-502.7.2

Notes : Remove "Van Accessible" signage.

Record Number 19436



Demuth Park

Parking - Exterior : Parking Lot

Parking Lot Next To Multi-Use Fields

Parking Lot : Less Than Minimum Required
Parking Spaces

Finding

There are not enough accessible parking spaces marked in the parking lot and therefore does not meet the minimum number required.

On-Site Finding 4.00 spaces

Recommendation

Re-stripe any existing parking spaces marked accessible and create additional accessible parking spaces. Designate one parking space as "van-accessible".

Recommendation At least 5.00 spaces

Costing Info (Estimated)

Paint ground markings and install a post mounted sign \$370

Code Reference ADA 208, 208.2, CA 11B-208.2

Record Number 19426



Demuth Park

Parking - Exterior : Parking Lot

Parking Lot Next To Multi-Use Fields

Parking Lot : Not on Closest Accessible Path to Entrance

Finding

The location of the designated accessible parking space(s) is not located on the shortest accessible route of travel to the facility for which it serves.

On-Site Finding Not on Path

Recommendation

Remove and relocate the designated accessible parking spaces. Accessible paved parking spaces shall be located on the shortest accessible route of travel to the facility for which it serves and shall coincide with the primary route and primary entrances used by the general public.

Recommendation See Recommendation

Costing Info (Estimated)

Stripe vehicle space and access aisle, \$1,379
install pole mounted signage, install
concrete curb cut

Code Reference ADA 502, 208, 208.3, CA 11B-208.2

Record Number 19427



Demuth Park

Parking - Exterior : Parking Lot , Warning Signage

Parking Lot Next To Multi-Use Fields

Parking Lot , Warning Signage : No Parking Lot Warning Sign

Finding

There is no warning signage posted regarding unauthorized use of accessible parking spaces in the parking lot.

On-Site Finding None Found

Recommendation

Post a sign in a conspicuous place to the entrance of the parking lot, or immediately adjacent to and visible from each accessible parking space. The warning sign shall measure at least 17 inches by 22 inches in size and consist of lettering at least 1 inch in height that clearly and conspicuously states the following; "Unauthorized vehicles parked in designated accessible spaces not displaying distinguishing placards or license plates issued for persons with disabilities will be towed away at owner's expense. Towed vehicles may be reclaimed at ____ or by telephoning ____ ." Fill in the blank spaces with appropriate information as a permanent part of the sign and maintain the currency of the information.

Recommendation See Recommendation

Costing Info (Estimated)

Install post mounted sign \$250

Code Reference CA 11B-502.8

Record Number 19428



Demuth Park

Parking - Exterior : Parking Lot , Parking Space

Parking Lot Next To Play Areas

Left Accessible Space

Parking Lot , Parking Space : Access Aisle is Faded or Damaged

Finding

The access aisle markings are faded, damaged, or otherwise not viewable.

On-Site Finding None Found

Recommendation

Re-stripe the access aisle so as to discourage parking.

Recommendation See Recommendation

Costing Info (Estimated)

Re-stripe existing parking space \$250

Code Reference ADA 502.3, 502.3.3,CA 11B-502.3

Record Number 19174



Demuth Park

Parking - Exterior : Parking Lot , Parking Space

Parking Lot Next To Play Areas

Left Accessible Space

Parking Lot , Parking Space : ISA is Faded or Damaged

Finding

ISA marking is faded and not viewable.

On-Site Finding Faded or Damaged

Recommendation

Repaint the ISA marking in the parking space.

Recommendation See Recommendation

Costing Info (Estimated)

Re-stripe existing parking space \$117

Code Reference ADA 502,CA 11B-502.6.4

Record Number 19170



Parking - Exterior : Parking Lot , Parking Space

Parking Lot Next To Play Areas

Left Accessible Space

Parking Lot , Parking Space : Access Aisle Does Not Say "No Parking"

Finding

The access aisle does not contain the wording "No Parking" painted on surface within the access aisle in white letters.

On-Site Finding None Found

Recommendation

Paint "NO PARKING" in 12 inch white letters.

Recommendation See Recommendation

Costing Info (Estimated)

Stripe an access aisle \$250

Code Reference CA 11B-502.3.3

Record Number 19175



Demuth Park

Parking - Exterior : Parking Lot , Parking Space

Parking Lot Next To Play Areas

Left Accessible Space

Parking Lot , Parking Space : Parking Space ISA Size

Finding

Pavement markings at the designated accessible parking spaces are not complaint.

On-Site Finding 31.50 inches

Recommendation

Provide a compliant pavement marking at the designated accessible parking space.

Recommendation At least 36.00 inches

Costing Info (Estimated)

Stripe an access aisle \$220

Code Reference CA 11B-502.6.4

Record Number 19171



Parking - Exterior : Parking Lot , Parking Space

Parking Lot Next To Play Areas

Left Accessible Space

Parking Lot , Parking Space : Access Aisle Width

Finding

The access aisle does not meet the minimum required width.

On-Site Finding 59.00 inches

Recommendation

Re-stripe the access aisle to meet the minimum required width and length for the space type.

Recommendation At least 96.00 inches

Costing Info (Estimated)

Stripe an access aisle \$250

Code Reference ADA 208, 502.2

Record Number 19172



Demuth Park

Parking - Exterior : Parking Lot , Parking Space

Parking Lot Next To Play Areas

Left Accessible Space

Parking Lot , Parking Space : Access Aisle Slope

Finding

The access aisle exceeds maximum slope.

On-Site Finding 2.60 percent

Recommendation

Pave the parking lot to provide a level surface.

Recommendation Up to 2.00 percent

Costing Info (Estimated)

Repave surface to correct slope and re-stripe \$3,800

Code Reference ADA 502, 502.4,CA 11B-502.4

Record Number 19173



Parking - Exterior : Parking Lot , Parking Space

Parking Lot Next To Play Areas

Left Accessible Space

Parking Lot , Parking Space : Vehicle Encroaches Into Path of Travel

Finding

There is no device at the head of the accessible parking space to prevent vehicles from encroaching into accessible aisles or walkways.

On-Site Finding None Found

Recommendation

Install a wheel stop at the head of the accessible parking space.

Recommendation See Recommendation

Costing Info (Estimated)

Add a wheel stop \$250

Code Reference ADA 502, 502.7,CA 11B-502.7.2

Record Number 19167



Demuth Park

Parking - Exterior : Parking Lot , Parking Space

Parking Lot Next To Play Areas

Left Accessible Space

Parking Lot , Parking Space : Parking Space Slope

Finding

The surface of the accessible parking space has a slope greater than allowed.

On-Site Finding 2.50 percent

Recommendation

Pave the parking lot to provide a level surface.

Recommendation Up to 2.00 percent

Costing Info (Estimated)

Repave surface to correct slope and re-stripe \$3,800

Code Reference ADA 502, 502.4, CA 11B-502.4

Record Number 19166



Demuth Park

Parking - Exterior : Parking Lot , Parking Space

Parking Lot Next To Play Areas

Left Accessible Space

Parking Lot , Parking Space : Must Travel Behind Parked Cars

Finding

The location of the accessible parking spaces requires individuals with disabilities to travel behind parked cars other than their own.

On-Site Finding See Above

Recommendation

Stripe an access aisle at the head of the accessible parking spaces, install a wheel stop at the head of the accessible parking spaces and at the general parking spaces. Wheel stops shall be used to prevent vehicles from encroaching into access aisles or walkways, but shall not present additional encroachment into those areas.

Recommendation See Recommendation



Costing Info (Estimated)

Install crosswalk \$1,100

Code Reference ADA 502.3,CA 11B-502.7.1

Record Number 19168

Demuth Park

Parking - Exterior : Parking Lot , Warning Signage

Parking Lot Next To Play Areas

Left Accessible Space

Parking Lot , Warning Signage : Parking Lot Warnings

Finding

There is no \$250.00 fine sign at the parking space.

On-Site Finding Not Found

Recommendation

Provide a \$250.00 fine sign at the parking space.

Recommendation See Recommendation

Costing Info (Estimated)

Install signage \$300

Code Reference CA 11B-502.8

Record Number 19169



Parking - Exterior : Parking Lot , Parking Space

Parking Lot Next To Play Areas

Right Accessible Space

Parking Lot , Parking Space : Outline is Faded, Damaged or Missing

Finding

The accessible parking space outline is faded, damaged, missing or otherwise not viewable.

On-Site Finding Faded or Damaged

Recommendation

Re-stripe the existing parking space marked as accessible to define the width of the space.

Recommendation See Recommendation

Costing Info (Estimated)

Re-stripe existing parking space \$350

Code Reference ADA 502, 502.2, CA 11B-502.2

Notes : Remove "Van Accessible" signage.

Record Number 19176



Demuth Park

Parking - Exterior : Parking Lot , Warning Signage

Parking Lot Next To Play Areas
Right Accessible Space

Parking Lot , Warning Signage : Parking Lot Warnings

Finding

There is no \$250.00 fine sign at the parking space.

On-Site Finding Not Found

Recommendation

Provide a \$250.00 fine sign at the parking space.

Recommendation See Recommendation

Costing Info (Estimated)

Install signage \$300

Code Reference CA 11B-502.8

Notes : Remove "Van Accessible" signage.

Record Number 19180



Parking - Exterior : Parking Lot , Parking Space

Parking Lot Next To Play Areas
Right Accessible Space

Parking Lot , Parking Space : No Parking Space ISA Symbol

Finding

The designated accessible parking space in the parking lot does not provide an International Symbol of Accessibility symbol pavement marking.

On-Site Finding None Found

Recommendation

Provide a compliant pavement marking at the designated accessible parking space.

Recommendation See Recommendation

Costing Info (Estimated)

Stripe an access aisle \$220

Code Reference ADA 502,CA 11B-502.6.4

Notes : Remove "Van Accessible" signage.

Record Number 19179



Demuth Park

Parking - Exterior : Parking Lot , Parking Space

Parking Lot Next To Play Areas

Right Accessible Space

Parking Lot , Parking Space : Parking Space Slope

Finding

The surface of the accessible parking space has a slope greater than allowed.

On-Site Finding 2.80 percent

Recommendation

Pave the parking lot to provide a level surface.

Recommendation Up to 2.00 percent

Costing Info (Estimated)

Repave surface to correct slope and re-stripe \$3,800

Code Reference ADA 502, 502.4,CA 11B-502.4

Notes : Remove "Van Accessible" signage.

Record Number 19177



Parking - Exterior : Parking Lot , Parking Space

Parking Lot Next To Play Areas

Right Accessible Space

Parking Lot , Parking Space : Vehicle Encroaches Into Path of Travel

Finding

There is no device at the head of the accessible parking space to prevent vehicles from encroaching into accessible aisles or walkways.

On-Site Finding None Found

Recommendation

Install a wheel stop at the head of the accessible parking space.

Recommendation See Recommendation

Costing Info (Estimated)

Add a wheel stop \$250

Code Reference ADA 502, 502.7,CA 11B-502.7.2

Notes : Remove "Van Accessible" signage.

Record Number 19178



Demuth Park

Parking - Exterior : Parking Lot , Parking Lot

Parking Lot Next To Play Areas

Parking Lot , Parking Lot : Vehicles Encroach Into Path of Travel

Finding

There is no device at the head of the general parking spaces to prevent vehicles from encroaching into walkways.

On-Site Finding None Found

Recommendation

Install a wheel stop at the head of the general parking spaces.

Recommendation See Recommendation

Costing Info (Estimated)

Add a wheel stop \$148

Code Reference ADA 502, 502.7,CA 11B-502.7.2

Record Number 19164



Demuth Park

Parking - Exterior : Parking Lot , Warning Signage

Parking Lot Next To Play Areas

Parking Lot , Warning Signage : No Parking Lot Warning Sign

Finding

There is no warning signage posted regarding unauthorized use of accessible parking spaces in the parking lot.

On-Site Finding None Found

Recommendation

Post a sign in a conspicuous place to the entrance of the parking lot, or immediately adjacent to and visible from each accessible parking space. The warning sign shall measure at least 17 inches by 22 inches in size and consist of lettering at least 1 inch in height that clearly and conspicuously states the following; "Unauthorized vehicles parked in designated accessible spaces not displaying distinguishing placards or license plates issued for persons with disabilities will be towed away at owner's expense. Towed vehicles may be reclaimed at ____ or by telephoning ____ ." Fill in the blank spaces with appropriate information as a permanent part of the sign and maintain the currency of the information.

Recommendation See Recommendation

Costing Info (Estimated)

Install post mounted sign \$250

Code Reference CA 11B-502.8

Record Number 19165



Demuth Park

Curb Ramps - Exterior : Curb Ramp

Curb Ramp At Accessible Parking Next To Baseball Fields 1-6

Curb Ramp : No Detectable Warnings

Finding

The curb ramp does not provide a detectable warning surface which includes truncated domes.

On-Site Finding Not Found

Recommendation

Provide compliant detectable warnings to surface.

Recommendation See Recommendation

Costing Info (Estimated)

Provide detectable warning to surface \$248

Code Reference CA 11B-406.5.12

Record Number 17004



Curb Ramps - Exterior : Curb Ramp

Curb Ramp At Accessible Parking Next To Baseball Fields 1-6

Curb Ramp : Curb Ramp Slope

Finding

The running slope is greater than allowed.

On-Site Finding 8.60 percent

Recommendation

Provide a compliant curb ramp.

Recommendation Up to 8.33 percent

Costing Info (Estimated)

Install curb ramp \$1,300

Code Reference ADA 406, 406.1, 405.2, CA 11B-406

Record Number 17005



Demuth Park

Curb Ramps - Exterior : Curb Ramp

Curb Ramp At Accessible Parking Next To Baseball Fields 1-6

Top Landing

Curb Ramp : No Grooved Borders

Finding

The curb ramp does not provide enough grooved border along the top and sides of the ramp at the level of the sidewalk.

On-Site Finding None Found

Recommendation

Provide a grooved border at least 12 inches wide along the top and sides of the curb ramp at the level surface of the sidewalk.

Recommendation See Recommendation

Costing Info (Estimated)

Patch pathway \$248

Code Reference CA 11B-406.5.11

Record Number 17006



Curb Ramps - Exterior : Curb Ramp

Curb Ramp At Accessible Spaces Next To Play Areas

Curb Ramp : No Detectable Warnings

Finding

The curb ramp does not provide a detectable warning surface which includes truncated domes.

On-Site Finding Not Found

Recommendation

Provide compliant detectable warnings to surface.

Recommendation See Recommendation

Costing Info (Estimated)

Provide detectable warning to surface \$248

Code Reference CA 11B-406.5.12

Record Number 17097



Demuth Park

Curb Ramps - Exterior : Curb Ramp

Curb Ramp At Accessible Spaces Next To Play Areas

Top Landing

Curb Ramp : No Grooved Borders

Finding

The curb ramp does not provide enough grooved border along the top and sides of the ramp at the level of the sidewalk.

On-Site Finding None Found

Recommendation

Provide a grooved border at least 12 inches wide along the top and sides of the curb ramp at the level surface of the sidewalk.

Recommendation See Recommendation

Costing Info (Estimated)

Patch pathway \$248

Code Reference CA 11B-406.5.11

Record Number 17098



Path of Travel - Exterior : Path Of Travel , Walking Surfaces

Path Of Travel From Accessible Parking To Multi-Use Fields

Curb

Path Of Travel , Walking Surfaces : Curb is on The Path of Travel

Finding

There is a curb on the designated path of travel.

On-Site Finding Curb Found

Recommendation

Provide a compliant curb ramp.

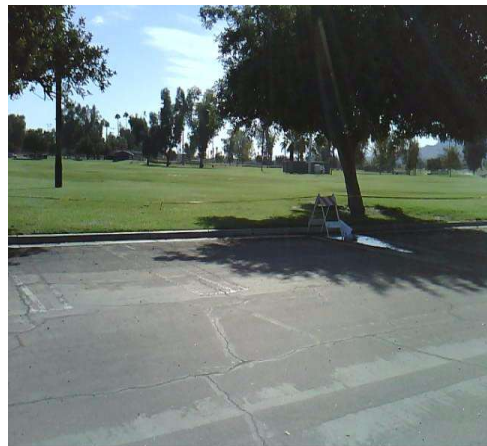
Recommendation See Recommendation

Costing Info (Estimated)

Install curb ramp \$2,500

Code Reference ADA 402, 206, 302, 303, 406, 403.4, 303.4

Record Number 17059



Demuth Park

Path of Travel - Exterior : Path Of Travel , Vehicular Traffic

**Path Of Travel From Accessible Parking To Multi-Use Fields
Vehicular Traffic**

Path Of Travel , Vehicular Traffic : Cross Walks and Detectable Warnings

Finding

There are no detectable warnings where the pedestrian route crosses vehicular traffic.

On-Site Finding None Found

Recommendation

Provide detectable warnings.

Recommendation See Recommendation

Costing Info (Estimated)

Install compliant detectable warnings \$190

Code Reference ADA 705,CA 11B-705.1.2.5,CA 11B-247.1.2.5

Record Number 17060



Path of Travel - Exterior : Path Of Travel , Vehicular Traffic

**Path Of Travel From Accessible Parking To Multi-Use Fields
Vehicular Traffic**

Path Of Travel , Vehicular Traffic : No Crosswalk

Finding

The pedestrian route crosses vehicular traffic.

On-Site Finding None Found

Recommendation

Provide a compliant crosswalk.

Recommendation See Recommendation

Costing Info (Estimated)

Install crosswalk \$1,100

Code Reference ADA 705, 406.5, 406.6

Record Number 17061



Demuth Park

Path of Travel - Exterior : Path Of Travel , Walking Surfaces

Path Of Travel From Accessible Parking To Multi-Use Fields

Open Area

Path Of Travel , Walking Surfaces :
Noncompliant Surface

Finding

The path of travel is grass, dirt, or gravel, preventing access to individuals with mobility impairments.

On-Site Finding Dirt, Grass or Gravel

Recommendation

Provide an accessible route.

Recommendation See Recommendation

Costing Info (Estimated)

Install pathway \$1,840

Code Reference ADA 302, 303, 403.2,CA
11B-302.1,CA 11B-403.2

Record Number 17058



Path of Travel - Exterior : Path Of Travel , Walking Surfaces

Path Of Travel From Play Area To Baseball Fields

Open Area

Path Of Travel , Walking Surfaces :
Noncompliant Surface

Finding

The path of travel is grass, dirt, or gravel, preventing access to individuals with mobility impairments.

On-Site Finding Dirt, Grass or Gravel

Recommendation

Provide an accessible route.

Recommendation See Recommendation

Costing Info (Estimated)

Install pathway \$1,840

Code Reference ADA 302, 303, 403.2,CA
11B-302.1,CA 11B-403.2

Record Number 19490



Demuth Park

Path of Travel - Exterior : Path Of Travel , Walking Surfaces

Path Of Travel From The Public Right Of Way To Tennis Courts And Play Areas

Changes In Level

Finding

There is a change in elevation greater than allowed on the primary path of travel.

On-Site Finding 0.50 inches

Recommendation

Provide a smooth transition.

Recommendation Up to 0.25 inches

Costing Info (Estimated)

Provide smooth surface \$150

Code Reference ADA 303, 403.4, 303.2,CA
11B-303,CA 11B-403.4

Record Number 17115

Path Of Travel , Walking Surfaces : Change in Level



Path of Travel - Exterior : Path Of Travel , Walking Surfaces

**Path Of Travel To Baseball Fields #1, 2, 3, 4
Open Area**

Finding

The path of travel is grass, dirt, or gravel, preventing access to individuals with mobility impairments.

On-Site Finding Dirt, Grass or Gravel

Recommendation

Provide an accessible route.

Recommendation See Recommendation

Costing Info (Estimated)

Install pathway \$1,840

Code Reference ADA 302, 303, 403.2,CA
11B-302.1,CA 11B-403.2

Record Number 19408

Path Of Travel , Walking Surfaces : Noncompliant Surface



Demuth Park

Path of Travel - Exterior : Path Of Travel , Walking Surfaces

**Path Of Travel To Baseball Fields #5, 6
Open Area**

Path Of Travel , Walking Surfaces :
Noncompliant Surface

Finding

The path of travel is grass, dirt, or gravel, preventing access to individuals with mobility impairments.

On-Site Finding Dirt, Grass or Gravel

Recommendation

Provide an accessible route.

Recommendation See Recommendation

Costing Info (Estimated)

Install pathway \$1,840

Code Reference ADA 302, 303, 403.2,CA
11B-302.1,CA 11B-403.2

Record Number 16925



Path of Travel - Exterior : Path Of Travel , Walking Surfaces

**Path Of Travel To Drinking Fountain At Picnic Area Next To Tennis Courts
Concrete Upheaval**

Path Of Travel , Walking Surfaces : Change in
Level

Finding

There is a change in elevation greater than allowed on the primary path of travel.

On-Site Finding 1.25 inches

Recommendation

Provide a smooth transition.

Recommendation Up to 0.25 inches

Costing Info (Estimated)

Provide smooth surface \$150

Code Reference ADA 303, 403.4, 303.2,CA
11B-303,CA 11B-403.4

Record Number 16924



Demuth Park

Path of Travel - Exterior : Path Of Travel , Protruding Objects

Path Of Travel To Mens Restroom Next To Play Area

Light Fixture

Path Of Travel , Protruding Objects : Protruding Objects - Protrusion Limit

Finding

The leading edge of the wall-mounted item is more than 4 inches from the wall. The item is greater than 27 inches, and less than 80 inches from the floor and protrudes into the primary path of travel.

On-Site Finding 8.00 inches

Recommendation

Install side extensions, modify, relocate, or lower the item so that the leading edge protrudes less than 4 inches from the wall, is less than 27 inches from the floor, or more than 80 inches from the floor.

Recommendation Up to 4.00 inches

Costing Info (Estimated)

Install wing walls or relocate object \$640

Code Reference ADA 307, 307.2,CA 11B-307.2

Record Number 16993



Demuth Park

Path of Travel - Exterior : Path Of Travel , Protruding Objects

Path Of Travel To Mens Restroom Next To Play Area

Meter

Path Of Travel , Protruding Objects : Protruding Objects - Protrusion Limit

Finding

The leading edge of the wall-mounted item is more than 4 inches from the wall. The item is greater than 27 inches, and less than 80 inches from the floor and protrudes into the primary path of travel.

On-Site Finding 5.00 inches

Recommendation

Install side extensions, modify, relocate, or lower the item so that the leading edge protrudes less than 4 inches from the wall, is less than 27 inches from the floor, or more than 80 inches from the floor.

Recommendation Up to 4.00 inches

Costing Info (Estimated)

Install wing walls or relocate object \$640

Code Reference ADA 307, 307.2,CA 11B-307.2

Record Number 16994



Demuth Park

Path of Travel - Exterior : Path Of Travel , Walking Surfaces

Path Of Travel To Outdoor Stage

Changes In Level

Path Of Travel , Walking Surfaces : Change in Level

Finding

There is a change in elevation greater than allowed on the primary path of travel.

On-Site Finding 0.87 inches

Recommendation

Provide a smooth transition.

Recommendation Up to 0.25 inches

Costing Info (Estimated)

Provide smooth surface \$150

Code Reference ADA 303, 403.4, 303.2,CA
11B-303,CA 11B-403.4

Record Number 16954



Path of Travel - Exterior : Path Of Travel , Walking Surfaces

Path Of Travel To Outdoor Stage

Exterior Walkway

Path Of Travel , Walking Surfaces : Walking Surface Cross Slope

Finding

There are cross slopes greater than allowed on the primary path of travel.

On-Site Finding 3.10 percent

Recommendation

Provide compliant sidewalk.

Recommendation Up to 2.00 percent

Costing Info (Estimated)

Install pathway \$3,600

Code Reference ADA 402, 403.3,CA 11B-403.3

Record Number 16953



Demuth Park

Path of Travel - Exterior : Path Of Travel , Walking Surfaces

Path Of Travel To Restrooms/Concessions Next To Baseball Fields #7 And 8

Open Area

Finding

The path of travel is grass, dirt, or gravel, preventing access to individuals with mobility impairments.

On-Site Finding Dirt, Grass or Gravel

Recommendation

Provide an accessible route.

Recommendation See Recommendation

Costing Info (Estimated)

Install pathway \$1,840

Code Reference ADA 302, 303, 403.2,CA
11B-302.1,CA 11B-403.2

Record Number 16942

Path Of Travel , Walking Surfaces : Noncompliant Surface



Path of Travel - Exterior : Path Of Travel , Walking Surfaces

Path Of Travel To Stage

Exterior Walkway

Finding

There are slopes greater than allowed maximum slope on the primary path of travel.

On-Site Finding 13.30 percent

Recommendation

Provide compliant sidewalk.

Recommendation Up to 5.00 percent

Costing Info (Estimated)

Install pathway \$3,600

Code Reference ADA 402, 403.3,CA 11B-403.3,CA
11B-402

Record Number 16962

Path Of Travel , Walking Surfaces : Walking Surface Slope



Demuth Park

Path of Travel - Exterior : Path Of Travel , Walking Surfaces

Path Of Travel To Stage

Exterior Walkway

Path Of Travel , Walking Surfaces : Sidewalk Width

Finding

The width of the path of travel is insufficient.

On-Site Finding 41.00 inches

Recommendation

Widen the primary path of travel to provide the correct width.

Recommendation At least 48.00 inches

Costing Info (Estimated)

Widen pathway \$3,500

Code Reference ADA 210, 504, 403.5.1,CA 11B-403.5.1

Record Number 16963



Path of Travel - Exterior : Path Of Travel , Walking Surfaces

Path Of Travel To Tennis Courts

Changes In Level

Path Of Travel , Walking Surfaces : Change in Level

Finding

There is a change in elevation greater than allowed on the primary path of travel.

On-Site Finding 1.00 inches

Recommendation

Provide a smooth transition.

Recommendation Up to 0.25 inches

Costing Info (Estimated)

Provide smooth surface \$150

Code Reference ADA 303, 403.4, 303.2,CA 11B-303,CA 11B-403.4

Record Number 16865



Demuth Park

Path of Travel - Exterior : Path Of Travel , Walking Surfaces

Path Of Travel To Tennis Courts

Exterior Walkway

Path Of Travel , Walking Surfaces : Walking Surface Slope

Finding

There are slopes greater than allowed maximum slope on the primary path of travel.

On-Site Finding 5.60 percent

Recommendation

Provide compliant sidewalk.

Recommendation Up to 5.00 percent

Costing Info (Estimated)

Install pathway \$3,600

Code Reference ADA 402, 403.3,CA 11B-403.3,CA 11B-402

Record Number 16863



Path of Travel - Exterior : Path Of Travel , Walking Surfaces

Path Of Travel To Tennis Courts

Exterior Walkway

Path Of Travel , Walking Surfaces : Walking Surface Cross Slope

Finding

There are cross slopes greater than allowed on the primary path of travel.

On-Site Finding 3.10 percent

Recommendation

Provide compliant sidewalk.

Recommendation Up to 2.00 percent

Costing Info (Estimated)

Install pathway \$3,600

Code Reference ADA 402, 403.3,CA 11B-403.3

Record Number 16864



Demuth Park

Path of Travel - Exterior : Path Of Travel , Walking Surfaces

Path Of Travel To The East Restrooms Next To Baseball Field #1

Exterior Walkway

Path Of Travel , Walking Surfaces : Walking Surface Cross Slope

Finding

There are cross slopes greater than allowed on the primary path of travel.

On-Site Finding 3.80 percent

Recommendation

Provide compliant sidewalk.

Recommendation Up to 2.00 percent

Costing Info (Estimated)

Install pathway \$3,600

Code Reference ADA 402, 403.3,CA 11B-403.3

Record Number 17057



Path of Travel - Exterior : Path Of Travel , Walking Surfaces

Path Of Travel To The Picnic Area Next To The Tennis Courts

Exterior Walkway

Path Of Travel , Walking Surfaces : Walking Surface Cross Slope

Finding

There are cross slopes greater than allowed on the primary path of travel.

On-Site Finding 2.60 percent

Recommendation

Provide compliant sidewalk.

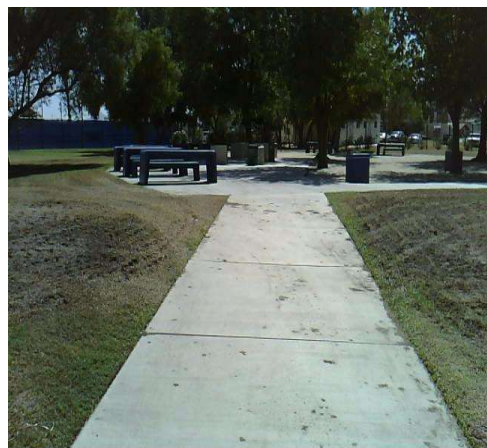
Recommendation Up to 2.00 percent

Costing Info (Estimated)

Install pathway \$3,600

Code Reference ADA 402, 403.3,CA 11B-403.3

Record Number 16934



Demuth Park

Path of Travel - Exterior : Path Of Travel , Walking Surfaces

Path Of Travel To Turtle Fountain

Exterior Walkway

Path Of Travel , Walking Surfaces : Sidewalk Width

Finding

The width of the path of travel is insufficient.

On-Site Finding 36.00 inches

Recommendation

Widen the primary path of travel to provide the correct width.

Recommendation At least 48.00 inches

Costing Info (Estimated)

Widen pathway \$3,500

Code Reference ADA 210, 504, 403.5.1,CA 11B-403.5.1

Record Number 16898



Path of Travel - Exterior : Path Of Travel , Walking Surfaces

Path Of Travel To Turtle Fountain Controls

Exterior Walkway

Path Of Travel , Walking Surfaces : Walking Surface Slope

Finding

There are slopes greater than allowed maximum slope on the primary path of travel.

On-Site Finding 12.10 percent

Recommendation

Provide compliant sidewalk.

Recommendation Up to 5.00 percent

Costing Info (Estimated)

Install pathway \$3,600

Code Reference ADA 402, 403.3,CA 11B-403.3,CA 11B-402

Record Number 16894



Demuth Park

Path of Travel - Exterior : Path Of Travel , Walking Surfaces

Path Of Travel To Volleyball Court

Open Area

Path Of Travel , Walking Surfaces : Noncompliant Surface

Finding

The path of travel is grass, dirt, or gravel, preventing access to individuals with mobility impairments.

On-Site Finding Dirt, Grass or Gravel

Recommendation

Provide an accessible route.

Recommendation See Recommendation

Costing Info (Estimated)

Install pathway \$1,840

Code Reference ADA 302, 303, 403.2,CA
11B-302.1,CA 11B-403.2

Record Number 17007



Path of Travel - Exterior : Path Of Travel , Walking Surfaces

Path Of Travel To West Restrooms Next To Baseball Field #1

Exterior Walkway

Path Of Travel , Walking Surfaces : Walking Surface Cross Slope

Finding

There are cross slopes greater than allowed on the primary path of travel.

On-Site Finding 2.50 percent

Recommendation

Provide compliant sidewalk.

Recommendation Up to 2.00 percent

Costing Info (Estimated)

Install pathway \$3,600

Code Reference ADA 402, 403.3,CA 11B-403.3

Record Number 17072



Demuth Park

Path of Travel - Exterior : Path Of Travel , Walking Surfaces

Path Of Travel To West Restrooms Next To Baseball Field #1

Exterior Walkway

Path Of Travel , Walking Surfaces : Walking Surface Slope

Finding

There are slopes greater than allowed maximum slope on the primary path of travel.

On-Site Finding 8.70 percent

Recommendation

Provide compliant sidewalk.

Recommendation Up to 5.00 percent

Costing Info (Estimated)

Install pathway \$3,600

Code Reference ADA 402, 403.3,CA 11B-403.3,CA 11B-402

Record Number 17071



Path of Travel - Exterior : Path Of Travel , Walking Surfaces

Path Of Travel To West Restrooms Next To Baseball Field #1

Exterior Walkway

Path Of Travel , Walking Surfaces : Sidewalk Width

Finding

The width of the path of travel is insufficient.

On-Site Finding 47.50 inches

Recommendation

Widen the primary path of travel to provide the correct width.

Recommendation At least 48.00 inches

Costing Info (Estimated)

Widen pathway \$3,500

Code Reference ADA 210, 504, 403.5.1,CA 11B-403.5.1

Record Number 17073



Demuth Park

Path of Travel - Exterior : Path Of Travel , Walking Surfaces

Path Of Travel To Womens Restroom Next To Play Area

Exterior Walkway

Path Of Travel , Walking Surfaces : Walking Surface Cross Slope

Finding

There are cross slopes greater than allowed on the primary path of travel.

On-Site Finding 2.40 percent

Recommendation

Provide compliant sidewalk.

Recommendation Up to 2.00 percent

Costing Info (Estimated)

Install pathway \$3,600

Code Reference ADA 402, 403.3,CA 11B-403.3

Record Number 17055



Stairs - Exterior : Stairway , Risers Striping

Left And Right Stairs To Stage

Run 1

Stairway , Risers Striping : No Riser Striping

Finding

There is no detectable striping on each tread of the exterior stairway.

On-Site Finding None Found

Recommendation

Affix detectable contrasting striping to each tread of the stairway that clearly contrasts in color from the tread and is at least 2 inches in width placed no more than 1 inch from the tread nose or landing.

Recommendation See Recommendation

Costing Info (Estimated)

Add non-slip surface to stair tread \$944

Code Reference ADA 504,CA 11B-504.4.1

Record Number 16923



Demuth Park

Stairs - Exterior : Stairway , Handrails

Left And Right Stairs To Stage

Run 1

Stairway , Handrails : No Handrails

Finding

There are no handrails provided on the stairway.

On-Site Finding None Found

Recommendation

Provide compliant handrails.

Recommendation See Recommendation

Costing Info (Estimated)

Add compliant handrail \$1,528

Code Reference ADA 504, 505.2, 504.6,CA
11B-504.6,CA 11B-505.2

Record Number 16922



Doors - Exterior : Door , Hardware

Gates To Tennis Courts 1, 2, 3, 4

Lever

Door , Hardware : Bottom Door Panel

Finding

The bottom of the door does not provide a smooth, uninterrupted surface, or panel to allow the door to be opened by a wheelchair footrest without creating a trap or hazardous condition.

On-Site Finding None Found

Recommendation

Install a panel or replace the door to provide a smooth, uninterrupted surface at the bottom of the door.

Recommendation See Recommendation

Costing Info (Estimated)

Install compliant door \$2,000

Code Reference ADA 404, 404.2.10,CA 11B-404.2.10

Record Number 19860



Demuth Park

Doors - Restrooms Next To Play Area : Door , Threshold

Mens Restroom Next To Play Area

Door , Threshold : Door Threshold

Finding

The height of the threshold at the entrance door is greater than allowed for a vertical rise.

On-Site Finding 0.50 inches

Recommendation

Modify or replace the threshold to provide the recommended height.

Recommendation See Recommendation

Costing Info (Estimated)

Bevel existing threshold \$257

Code Reference ADA 404, 404.2.5, CA 11B-404.2.5

Record Number 19865



Doors - Restrooms Next To Play Area : Door

Mens Restroom Next To Play Area

Door : Door Opening Height

Finding

The vertical clearance height of the door is less than required.

On-Site Finding 79.62 inches

Recommendation

Extend the height of the doorway to provide the required clearance height.

Recommendation At least 80.00 inches

Costing Info (Estimated)

Install compliant door \$2,000

Code Reference ADA 307, 404, 307.4, CA 11B-307, CA 11B-404

Record Number 19864



Demuth Park

Doors - Restrooms Next To Play Area : Door , Threshold

Womens Restroom Next To Play Area

Door , Threshold : Door Threshold

Finding

The height of the threshold at the entrance door is greater than allowed.

On-Site Finding 0.62 inches

Recommendation

Modify or replace the threshold to provide the recommended height.

Recommendation Up to 0.50 inches

Costing Info (Estimated)

Provide smooth transition \$436

Code Reference ADA 404, 404.2.5,CA 11B-404.2.5

Record Number 19863



Doors - Restrooms Next To Play Area : Door , Hardware Height

Womens Restroom Next To Play Area

Lever

Door , Hardware Height : Height

Finding

Door hardware is not mounted at the correct height.

On-Site Finding 48.00 inches

Recommendation

Mount the door hardware at the recommended height.

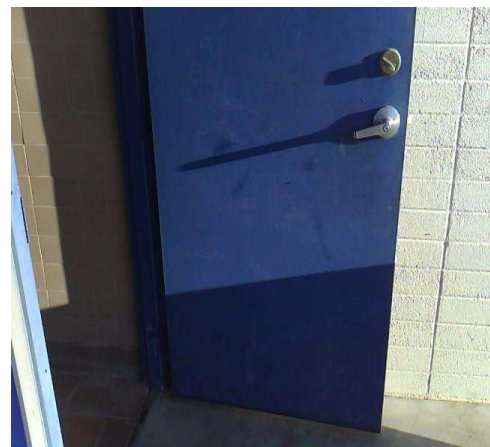
Recommendation 30.00 - 44.00 inches

Costing Info (Estimated)

Replace door hardware \$280

Code Reference ADA 404, 404.2.7,CA 11B-404.2.7

Record Number 19862



Demuth Park

Doors - Restrooms Next To Play Area : Door

Womens Restroom Next To Play Area

Door : Door Opening Height

Finding

The vertical clearance height of the door is less than required.

On-Site Finding 79.12 inches

Recommendation

Extend the height of the doorway to provide the required clearance height.

Recommendation At least 80.00 inches

Costing Info (Estimated)

Install compliant door \$2,000

Code Reference ADA 307, 404, 307.4, CA 11B-307, CA 11B-404

Record Number 19861



Counters - Restroom Building Next To Baseball Fields #7 And 8 : Counter

Concessions For Baseball Fields #7 And 8

Counter : Counter Height

Finding

The height of the counter or desk does not comply with height requirements. No equivalent facilitation is provided in the area.

On-Site Finding 35.50 inches

Recommendation

Provide a portion of counter at the compliant height.

Recommendation 28.00 - 34.00 inches

Costing Info (Estimated)

Provide compliant counter \$3,500

Code Reference ADA 902, 904, CA 11B-904.4

Record Number 16906



Demuth Park

Signage - Restroom Building Next To Baseball Fields #7 And 8 : Signage Concessions For Baseball Fields #7 And 8

Signage : No Room Identification

Finding

There is no room identification signage.

On-Site Finding None Found

Recommendation

Install room identification signage.

Recommendation See Recommendation

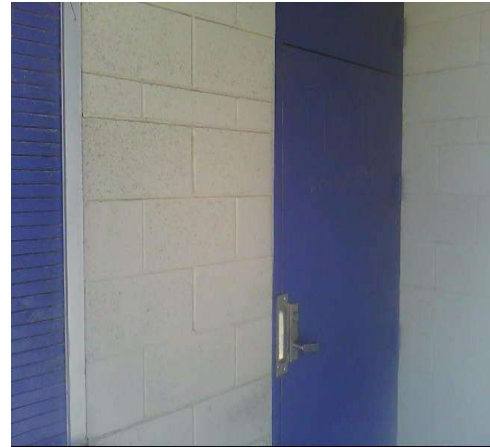
Costing Info (Estimated)

Install signage \$158

Code Reference ADA 703, 216, 216.2,CA 11B-216.2

Notes : Unable to gain access at time of inspection.

Record Number 20130



Signage - Exterior : Signage , Signage

Directional Signage From The Public Right Of Way

Signage , Signage : No Directional or Information Signage

Finding

There is no directional signage.

On-Site Finding None Found

Recommendation

Install directional signage to each accessible element or room.

Recommendation See Recommendation

Costing Info (Estimated)

Install signage \$158

Code Reference ADA 703, 216, 216.3,CA 11B-216.3, 703.5,CA 11B-703.5

Record Number 20131



Demuth Park

Signage - Exterior : Signage , Signage

Directional Signage To Common Areas

Signage , Signage : No Directional or Information Signage

Finding

There is no directional signage.

On-Site Finding None Found

Recommendation

Install directional signage to each accessible element or room.

Recommendation See Recommendation

Costing Info (Estimated)

Install signage \$158

Code Reference ADA 703, 216, 216.3, CA 11B-216.3, 703.5, CA 11B-703.5

Record Number 20129



Restrooms - West Restrooms Next To Baseball Field #1 : Restroom

Center North Womens Restroom At West Restrooms Next To Baseball Field #1

Restroom : Restroom

Finding

The restroom is not accessible and cannot be easily altered. There is no sufficient clear floor space to accommodate an individual in a wheelchair.

On-Site Finding Not Accessible

Recommendation

Consult a design professional to modify the restroom for access compliance.

Recommendation See Recommendation

Costing Info (Estimated)

Modify restroom \$14,000

Code Reference ADA 603, 213, 213.1, 603.1

Notes : Locked at time of inspection.

Record Number 16984



Demuth Park

Restrooms - East Restrooms Next To Baseball Field #1 : Restroom

East Mens Restrooms Next To Baseball Field #1

Restroom : Restroom

Finding

The restroom is not accessible and cannot be easily altered. There is no sufficient clear floor space to accommodate an individual in a wheelchair.

On-Site Finding Not Accessible

Recommendation

Consult a design professional to modify the restroom for access compliance.

Recommendation See Recommendation

Costing Info (Estimated)

Modify restroom \$14,000

Code Reference ADA 603, 213, 213.1, 603.1

Notes : Locked at time of inspection.

Record Number 17056



Restrooms - West Restrooms Next To Baseball Field #1 : Restroom

East Womens Restroom At West Restrooms Next To Baseball Field #1

Restroom : Restroom

Finding

The restroom is not accessible and cannot be easily altered. There is no sufficient clear floor space to accommodate an individual in a wheelchair.

On-Site Finding Not Accessible

Recommendation

Consult a design professional to modify the restroom for access compliance.

Recommendation See Recommendation

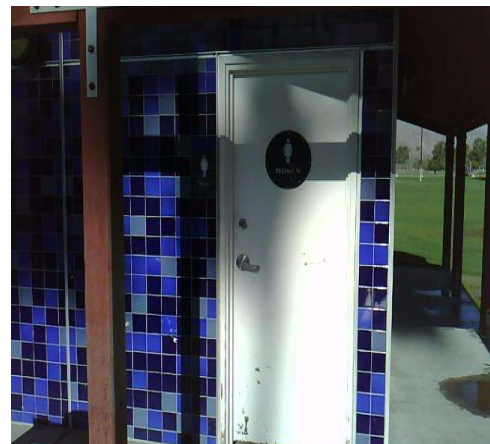
Costing Info (Estimated)

Modify restroom \$14,000

Code Reference ADA 603, 213, 213.1, 603.1

Notes : Locked at time of inspection.

Record Number 17114



Demuth Park

Restrooms - East Restrooms Next To Baseball Field #1 : Restroom

East Womens Restrooms Next To Baseball Field #1

Restroom : Restroom

Finding

The restroom is not accessible and cannot be easily altered. There is no sufficient clear floor space to accommodate an individual in a wheelchair.

On-Site Finding Not Accessible

Recommendation

Consult a design professional to modify the restroom for access compliance.

Recommendation See Recommendation

Costing Info (Estimated)

Modify restroom \$14,000

Code Reference ADA 603, 213, 213.1, 603.1

Notes : Locked at time of inspection.

Record Number 17116



Restrooms - West Restrooms Next To Baseball Field #1 : Restroom

Left Mens Restroom At West Restrooms Next To Baseball Field #1

Restroom : Restroom

Finding

The restroom is not accessible and cannot be easily altered. There is no sufficient clear floor space to accommodate an individual in a wheelchair.

On-Site Finding Not Accessible

Recommendation

Consult a design professional to modify the restroom for access compliance.

Recommendation See Recommendation

Costing Info (Estimated)

Modify restroom \$14,000

Code Reference ADA 603, 213, 213.1, 603.1

Notes : Locked at time of inspection.

Record Number 17096



Demuth Park

Restrooms - West Restrooms Next To Baseball Field #1 : Restroom

Left North Womens Restroom At West Restrooms Next To Baseball Field #1

Restroom : Restroom

Finding

The restroom is not accessible and cannot be easily altered. There is no sufficient clear floor space to accommodate an individual in a wheelchair.

On-Site Finding Not Accessible

Recommendation

Consult a design professional to modify the restroom for access compliance.

Recommendation See Recommendation

Costing Info (Estimated)

Modify restroom \$14,000

Code Reference ADA 603, 213, 213.1, 603.1

Notes : Locked at time of inspection.

Record Number 16992



Restrooms - Restroom Building Next To Baseball Fields #7 And 8 : Restroom , Urinal

Mens Restroom Next To Baseball Field #7

Restroom , Urinal : Urinal Rim Height

Finding

The height of the urinal rim in the restroom is greater than 17 inches above the finished floor.

On-Site Finding 24.00 inches

Recommendation

Lower the urinal designated to be accessible in the restroom so that the rim height is not more than 17 inches above the finished floor.

Recommendation Up to 17.00 inches

Costing Info (Estimated)

Lower urinal \$1,397

Code Reference ADA 605, 605.2, CA 11B-605.2

Record Number 19475



Demuth Park

**Restrooms - Restroom Building Next To Baseball Fields #7 And 8 :
Restroom , Urinal**

Mens Restroom Next To Baseball Field #7

Restroom , Urinal : Urinal Flush Control Height

Finding

The height of the urinal flush control in the restroom is greater than the required maximum height.

On-Site Finding 49.00 inches

Recommendation

Lower the flush control valve on the urinal to a height not greater than the required maximum height.

Recommendation Up to 44.00 inches

Costing Info (Estimated)

Lower urinal flush control valve \$227

Code Reference ADA 605, 309.3, 605.4, 308.2,CA
11B-605.4

Record Number 19476



**Restrooms - Restroom Building Next To Baseball Fields #7 And 8 :
Restroom , Compartment Door**

Mens Restroom Next To Baseball Field #7

Restroom , Compartment Door : Compartment Door Handle

Finding

The door to the compartment does not have an accessible handle on both sides.

On-Site Finding Not on both sides.

Recommendation

Provide an accessible handle mounted on the door of the compartment near the latch.

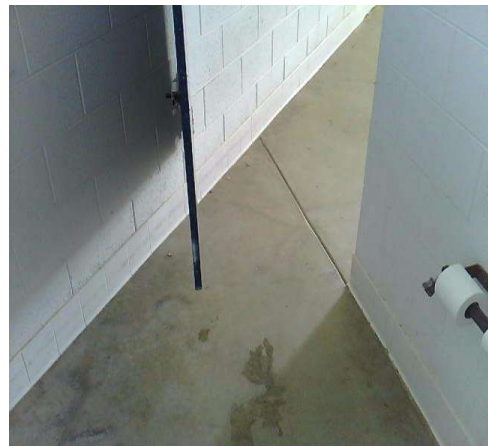
Recommendation See Recommendation

Costing Info (Estimated)

Install accessible handle on stall door \$250

Code Reference ADA 404, 213, 604, 604.8.1.2,
604.8,CA 11B-404.2.7,CA
11B-604.8.1.2

Record Number 19487



Demuth Park

Restrooms - Restroom Building Next To Baseball Fields #7 And 8 : Restroom , Compartment Door

Mens Restroom Next To Baseball Field #7

Restroom , Compartment Door : Compartment Door

Finding

Door does not close automatically.

On-Site Finding Missing Hardware

Recommendation

Provide an automatic door closer, spring hinge, pull bar or accessible handle mounted on the inside of the compartment door to the compartment designated to be accessible in the restroom.

Recommendation See Recommendation

Costing Info (Estimated)

Install accessible hardware on stall door \$269

Code Reference ADA 404, 604.8.1.2, 604.8,CA 11B-604.8.1.2

Record Number 19488



Restrooms - Restroom Building Next To Baseball Fields #7 And 8 : Restroom

Mens Restroom Next To Baseball Field #7

Restroom : Door Handle

Finding

The inside handle is not located near the latch.

On-Site Finding None Found

Recommendation

Adjust the inside handle so that it is located near the latch.

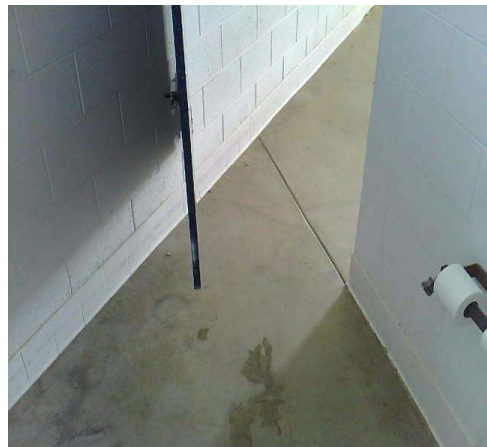
Recommendation See Recommendation

Costing Info (Estimated)

Adjust handle \$129

Code Reference ADA 404, 213, 604, 604.8.1.2,CA 11B-404.2.7,CA 11B-604.8.1.2

Record Number 19489



Demuth Park

**Restrooms - Restroom Building Next To Baseball Fields #7 And 8 :
Restroom , Grab Bars**

Mens Restroom Next To Baseball Field #7

Restroom , Grab Bars : Distance from Back Wall to Front of Grab Bar

Finding

The distance from the back wall to the front of the grab bar is less than required.

On-Site Finding 53.25 inches

Recommendation

Install or move the grab bar to create the required distance from the back wall to the front of the grab bar.

Recommendation At least 54.00 inches

Costing Info (Estimated)

Provide compliant grab bar \$267

Code Reference ADA 603, 609, 604.5.1,CA
11B-604.5.1,CA 11B-609

Record Number 19483



**Restrooms - Restroom Building Next To Baseball Fields #7 And 8 :
Restroom , Grab Bars**

Mens Restroom Next To Baseball Field #7

Restroom , Grab Bars : Distance from Front Edge of Toilet to Front of Grab Bar

Finding

The distance from the front edge of the toilet to the front edge of the side grab bar is insufficient.

On-Site Finding 22.25 inches

Recommendation

Install or relocate the side grab bar so that the distance from the front edge of the toilet to the front edge of the side grab bar meets the required minimum distance.

Recommendation At least 24.00 inches

Costing Info (Estimated)

Provide compliant grab bar \$267

Code Reference CA 11B-604.5.1

Record Number 19484



Demuth Park

**Restrooms - Restroom Building Next To Baseball Fields #7 And 8 :
Restroom , Grab Bars**

Mens Restroom Next To Baseball Field #7

Restroom , Grab Bars : Side Grab Bar Height

Finding

The height of the side grab bar is not at the correct height.

On-Site Finding 33.50 inches

Recommendation

Remount the grab bar so it is at the correct height.

Recommendation 33.00 inches

Costing Info (Estimated)

Relocate compliant grab bars and patch \$500

Code Reference ADA 603, 609, 609.4,CA
11B-609.4,CA 11B-604.5

Record Number 19485



**Restrooms - Restroom Building Next To Baseball Fields #7 And 8 :
Restroom , Grab Bars**

Mens Restroom Next To Baseball Field #7

Restroom , Grab Bars : Rear Grab Bar Height

Finding

The grab bar on the rear wall is not at the correct height.

On-Site Finding 33.50 inches

Recommendation

Remount the rear grab bar in the compartment designated to be accessible so the height of the gripping surface is at the correct height.

Recommendation 33.00 inches

Costing Info (Estimated)

Provide compliant grab bars \$231

Code Reference ADA 603, 609, 609.4,CA 11B-609.4

Record Number 19486



Demuth Park

**Restrooms - Restroom Building Next To Baseball Fields #7 And 8 :
Restroom , Toilet**

Mens Restroom Next To Baseball Field #7

Restroom , Toilet : Toilet Distance From Wall

Finding

The distance from the center of the toilet to the nearest side wall does not meet the required distance.

On-Site Finding 18.87 inches on center

Recommendation

Relocate the toilet so the distance from the center line of the toilet to the nearest side wall meets the required distance.

Recommendation 16.00 - 18.00 inches

Costing Info (Estimated)

Relocate fixture \$2,500

Code Reference ADA 603, 604.7, 604.2,CA 11B-604.2

Record Number 19480



**Restrooms - Restroom Building Next To Baseball Fields #7 And 8 :
Restroom , Toilet**

Mens Restroom Next To Baseball Field #7

Restroom , Toilet : Toilet Flush Control not on Wide Side

Finding

The flush control on the toilet is not on the wide (approach) side of the toilet.

On-Site Finding Wrong Side of Toilet

Recommendation

Relocate the flush control so it is on the wide (approach) side of the toilet area. Flush controls shall be hand-operated or automatic mechanisms.

Recommendation See Recommendation

Costing Info (Estimated)

Relocate flush valve \$127

Code Reference ADA 603, 604.6,CA 11B-604.6

Record Number 19482



Demuth Park

Restrooms - Restroom Building Next To Baseball Fields #7 And 8 : Restroom , Door Signage

Mens Restroom Next To Baseball Field #7
Door Sign - Male

Restroom , Door Signage : No Door Signage

Finding

There is no gender use signage on the entrance door.

On-Site Finding None Found

Recommendation

Post gender use signage on the center of the door at the required height.

Recommendation See Recommendation

Costing Info (Estimated)

Install signage \$158

Code Reference CA 11B-216.8,CA 11B-703.7.2.6

Record Number 19478



Restrooms - Restroom Building Next To Baseball Fields #7 And 8 : Restroom , Lavatory

Mens Restroom Next To Baseball Field #7
Lavatory

Restroom , Lavatory : Lavatory - Supply Lines not wrapped

Finding

Supply lines are not wrapped at the lavatory.

On-Site Finding Not Wrapped

Recommendation

Wrap the supply lines around lavatory according to compliance.

Recommendation See Recommendation

Costing Info (Estimated)

Wrap supply lines \$149

Code Reference ADA 213, 606, 606.5,CA 11B-606.5

Record Number 19474



Demuth Park

**Restrooms - Restroom Building Next To Baseball Fields #7 And 8 :
Restroom , Lavatory**

**Mens Restroom Next To Baseball Field #7
Lavatory**

Restroom , Lavatory : Lavatory Surface Height

Finding

The height of the counter surface is greater than allowed.

On-Site Finding 34.75 inches

Recommendation

Relocate or replace the lavatory to provide a maximum counter surface height of no greater than recommended.

Recommendation Up to 34.00 inches

Costing Info (Estimated)

Provide compliant lavatory \$1,286

Code Reference ADA 213, 606, 606.3,CA 11B-213,CA 11B-606.3

Record Number 19472



**Restrooms - Restroom Building Next To Baseball Fields #7 And 8 :
Restroom , Lavatory**

**Mens Restroom Next To Baseball Field #7
Lavatory**

Restroom , Lavatory : Lavatory Pipes Not Wrapped

Finding

The pipes under the lavatory do not provide protection against contact.

On-Site Finding Pipes not wrapped.

Recommendation

Insulate or otherwise configure pipes under the lavatory to protect against contact. Make certain there are no sharp or abrasive surfaces under the lavatory.

Recommendation See Recommendation

Costing Info (Estimated)

Wrap pipes \$149

Code Reference ADA 213, 606, 606.5,CA 11B-606.5

Record Number 19473



Demuth Park

Restrooms - Restroom Building Next To Baseball Fields #7 And 8 : Restroom , Dispensers

Mens Restroom Next To Baseball Field #7
Soap

Restroom , Dispensers : Dispenser Height

Finding

The height of the controls and operating mechanisms for the dispenser is not at the correct height.

On-Site Finding 49.50 inches

Recommendation

Relocate the dispenser to the correct height.

Recommendation Up to 40.00 inches

Costing Info (Estimated)

Provide compliant dispenser \$277

Code Reference ADA 309, 205, 308, 606, 308.1,CA 11B-603.5

Record Number 19471



Restrooms - Restroom Building Next To Baseball Fields #7 And 8 : Restroom , Wall Signage

Mens Restroom Next To Baseball Field #7
Wall Sign

Restroom , Wall Signage : No Wall Signage

Finding

There is no signage indicating accessibility on the latch side of the entry door of the restroom.

On-Site Finding None Found

Recommendation

Provide compliant signage on latch side of door.

Recommendation See Recommendation

Costing Info (Estimated)

Install signage \$158

Code Reference ADA 703, 216, 216.8,CA 11B-216.8

Record Number 19479



Demuth Park

Restrooms - Restrooms Next To Play Area : Restroom , Compartment Door

Mens Restroom Next To Play Area

Restroom , Compartment Door : Compartment Door

Finding

Door does not close automatically.

On-Site Finding Missing Hardware

Recommendation

Provide an automatic door closer, spring hinge, pull bar or accessible handle mounted on the inside of the compartment door to the compartment designated to be accessible in the restroom.

Recommendation See Recommendation

Costing Info (Estimated)

Install accessible hardware on stall door \$269

Code Reference ADA 404, 604.8.1.2, 604.8,CA 11B-604.8.1.2

Record Number 16981



Restrooms - Restrooms Next To Play Area : Restroom

Mens Restroom Next To Play Area

Restroom : Door Handle

Finding

The inside handle is not located near the latch.

On-Site Finding None Found

Recommendation

Adjust the inside handle so that it is located near the latch.

Recommendation See Recommendation

Costing Info (Estimated)

Adjust handle \$129

Code Reference ADA 404, 213, 604, 604.8.1.2,CA 11B-404.2.7,CA 11B-604.8.1.2

Record Number 16982



Demuth Park

Restrooms - Restrooms Next To Play Area : Restroom

Mens Restroom Next To Play Area

Restroom : Toilet Compartment Door

Finding

The compartment door is located in front of the water closet.

On-Site Finding Not Located

Recommendation

Reconfigure the toilet compartment to provide a compliant door that is located adjacent to the water closet.

Recommendation See Recommendation

Costing Info (Estimated)

\$4,000

Code Reference ADA 604.8.1.2, CA 11B-604.8.1.2

Record Number 16980



Restrooms - Restrooms Next To Play Area : Restroom , Grab Bars

Mens Restroom Next To Play Area

Restroom , Grab Bars : Distance from Front Edge of Toilet to Front of Grab Bar

Finding

The distance from the front edge of the toilet to the front edge of the side grab bar is insufficient.

On-Site Finding 23.75 inches

Recommendation

Install or relocate the side grab bar so that the distance from the front edge of the toilet to the front edge of the side grab bar meets the required minimum distance.

Recommendation At least 24.00 inches

Costing Info (Estimated)

Provide compliant grab bar \$267

Code Reference CA 11B-604.5.1

Record Number 16978



Demuth Park

Restrooms - Restrooms Next To Play Area : Restroom , Grab Bars

Mens Restroom Next To Play Area

Restroom , Grab Bars : Side Grab Bar Height

Finding

The height of the side grab bar is not at the correct height.

On-Site Finding 32.00 inches

Recommendation

Remount the grab bar so it is at the correct height.

Recommendation 33.00 inches

Costing Info (Estimated)

Relocate compliant grab bars and patch \$500

Code Reference ADA 603, 609, 609.4,CA
11B-609.4,CA 11B-604.5

Record Number 16979



Restrooms - Restrooms Next To Play Area : Restroom , Grab Bars

Mens Restroom Next To Play Area

Restroom , Grab Bars : Grab Bar Distance From Back Wall

Finding

The distance from the rear wall to the side grab bar is greater than allowed.

On-Site Finding 12.75 inches

Recommendation

Remount the side grab bar so it meets the distance requirements from the back wall.

Recommendation Up to 12.00 inches

Costing Info (Estimated)

Provide compliant grab bar \$267

Code Reference ADA 603, 609, 604.5.1,CA
11B-604.5.1

Record Number 16977



Demuth Park

Restrooms - Restrooms Next To Play Area : Restroom , Toilet Compartment

Mens Restroom Next To Play Area

Restroom , Toilet Compartment : Toilet Paper Dispenser Distance From Seat

Finding

The location of the toilet paper dispenser is not within the required distance from the front edge of the toilet seat.

On-Site Finding 11.00 inches

Recommendation

Remount the toilet paper dispenser so it is within the required distance from the front edge of the toilet seat. Toilet paper dispensers must allow continuous paper flow and shall not interfere with the use of the side grab bar.

Recommendation 7.00 - 9.00 inches

Costing Info (Estimated)

Provide compliant dispenser \$277

Code Reference ADA 603, 604.7,CA 11B-604.7,CA 11B-309.4

Record Number 16983



Restrooms - Restrooms Next To Play Area : Restroom , Toilet

Mens Restroom Next To Play Area

Restroom , Toilet : Toilet Minimum Distance From Any fixture

Finding

The toilet is not located in a space which provides the minimum required distance from a fixture or the minimum required clear space from a wall at the wide side.

On-Site Finding 26.12 inches

Recommendation

Locate the toilet in a space which provides the required clearances.

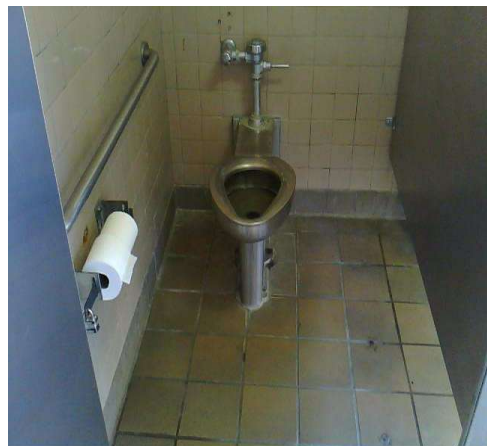
Recommendation At least 42.00 inches

Costing Info (Estimated)

Relocate fixture \$2,500

Code Reference ADA 603, 604.2,CA 11B-604.2

Record Number 16975



Demuth Park

Restrooms - Restrooms Next To Play Area : Restroom , Toilet

Mens Restroom Next To Play Area

Restroom , Toilet : Toilet Clear Floor Space

Finding

There is less than the required minimum space in front of the toilet.

On-Site Finding 29.62 inches

Recommendation

Create the required minimum clear space in front of the toilet.

Recommendation At least 48.00 inches

Costing Info (Estimated)

Modify space \$3,500

Code Reference ADA 603,CA 11B-604.8.1

Record Number 16976



Restrooms - Restrooms Next To Play Area : Restroom

Mens Restroom Next To Play Area

Restroom : Restroom Urinal

Finding

The urinal center line is not compliant.

On-Site Finding 8.62 inches

Recommendation

Provide a compliant urinal with recommended values.

Recommendation At least 15.00 inches

Costing Info (Estimated)

Provide urinal \$2,300

Code Reference ADA 305, 605, 605.3,CA 11B-605.3

Record Number 16998



Demuth Park

Restrooms - Restrooms Next To Play Area : Restroom , Dispensers

Mens Restroom Next To Play Area

Blower

Restroom , Dispensers : Dispenser Height

Finding

The height of the controls and operating mechanisms for the dispenser is not at the correct height.

On-Site Finding 45.50 inches

Recommendation

Relocate the dispenser to the correct height.

Recommendation Up to 40.00 inches

Costing Info (Estimated)

Provide compliant dispenser \$277

Code Reference ADA 309, 205, 308, 606, 308.1,CA 11B-603.5

Record Number 16995



Restrooms - Restrooms Next To Play Area : Restroom , Door Signage

Mens Restroom Next To Play Area

Door Sign - Male

Restroom , Door Signage : No Door Signage

Finding

There is no gender use signage on the entrance door.

On-Site Finding None Found

Recommendation

Post gender use signage on the center of the door at the required height.

Recommendation See Recommendation

Costing Info (Estimated)

Install signage \$158

Code Reference CA 11B-216.8,CA 11B-703.7.2.6

Record Number 16999



Demuth Park

Restrooms - Restrooms Next To Play Area : Restroom , Lavatory

Mens Restroom Next To Play Area

Lavatory

Restroom , Lavatory : Lavatory Surface Height

Finding

The height of the counter surface is greater than allowed.

On-Site Finding 34.50 inches

Recommendation

Relocate or replace the lavatory to provide a maximum counter surface height of no greater than recommended.

Recommendation Up to 34.00 inches

Costing Info (Estimated)

Provide compliant lavatory \$1,286

Code Reference ADA 213, 606, 606.3,CA 11B-213,CA 11B-606.3

Record Number 16996



Restrooms - Restrooms Next To Play Area : Restroom , Lavatory

Mens Restroom Next To Play Area

Lavatory

Restroom , Lavatory : Lavatory Pipes Not Wrapped

Finding

The pipes under the lavatory do not provide protection against contact.

On-Site Finding Pipes not wrapped.

Recommendation

Insulate or otherwise configure pipes under the lavatory to protect against contact. Make certain there are no sharp or abrasive surfaces under the lavatory.

Recommendation See Recommendation

Costing Info (Estimated)

Wrap pipes \$149

Code Reference ADA 213, 606, 606.5,CA 11B-606.5

Record Number 16997



Demuth Park

Restrooms - Restrooms Next To Play Area : Restroom , Wall Signage

Mens Restroom Next To Play Area

Wall Sign

Restroom , Wall Signage : No Wall Signage

Finding

There is no signage indicating accessibility on the latch side of the entry door of the restroom.

On-Site Finding None Found

Recommendation

Provide compliant signage on latch side of door.

Recommendation See Recommendation

Costing Info (Estimated)

Install signage \$158

Code Reference ADA 703, 216, 216.8,CA 11B-216.8

Record Number 17000



Restrooms - Restrooms Next To Play Area : Restroom , Toilet Compartment

Mens Restroom Next To Play Area

Restroom , Toilet Compartment : Toilet Compartment Width

Finding

There is insufficient clear floor space in the compartment.

On-Site Finding 43.50 inches

Recommendation

Modify or replace the compartment to provide adequate clear floor space.

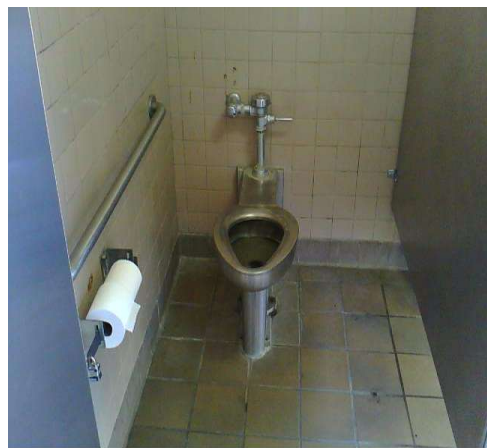
Recommendation At least 60.00 inches

Costing Info (Estimated)

Install accessible stall \$4,000

Code Reference ADA 603, 213, 604, 604.8.1.1,CA 11B-604.8.1.1

Record Number 16972



Demuth Park

Restrooms - Restrooms Next To Play Area : Restroom , Grab Bars

Mens Restroom Next To Play Area

Restroom , Grab Bars : No Back Wall Grab Bar

Finding

There is no back grab bar at the toilet compartment.

On-Site Finding None Found

Recommendation

Install the required grab bars in the toilet compartment.

Recommendation See Recommendation

Costing Info (Estimated)

Provide compliant grab bar \$267

Code Reference ADA 603, 604.5, 604.8.1.5,CA
11B-604.5,CA 11B-604.8.1.5

Record Number 16973



Restrooms - West Restrooms Next To Baseball Field #1 : Restroom

Right Mens Restroom At West Restrooms Next To Baseball Field #1

Restroom : Restroom

Finding

The restroom is not accessible and cannot be easily altered. There is no sufficient clear floor space to accommodate an individual in a wheelchair.

On-Site Finding Not Accessible

Recommendation

Consult a design professional to modify the restroom for access compliance.

Recommendation See Recommendation

Costing Info (Estimated)

Modify restroom \$14,000

Code Reference ADA 603, 213, 213.1, 603.1

Notes : Locked at time of inspection.

Record Number 17101



Demuth Park

Restrooms - West Restrooms Next To Baseball Field #1 : Restroom

Right North Womens Restroom At West Restrooms Next To Baseball Field #1

Restroom : Restroom

Finding

The restroom is not accessible and cannot be easily altered. There is no sufficient clear floor space to accommodate an individual in a wheelchair.

On-Site Finding Not Accessible

Recommendation

Consult a design professional to modify the restroom for access compliance.

Recommendation See Recommendation

Costing Info (Estimated)

Modify restroom \$14,000

Code Reference ADA 603, 213, 213.1, 603.1

Notes : Locked at time of inspection.

Record Number 17113



Restrooms - West Restrooms Next To Baseball Field #1 : Restroom

Unisex Restroom At West Restrooms Next To Baseball Field #1

Restroom : Restroom

Finding

The restroom is not accessible and cannot be easily altered. There is no sufficient clear floor space to accommodate an individual in a wheelchair.

On-Site Finding Not Accessible

Recommendation

Consult a design professional to modify the restroom for access compliance.

Recommendation See Recommendation

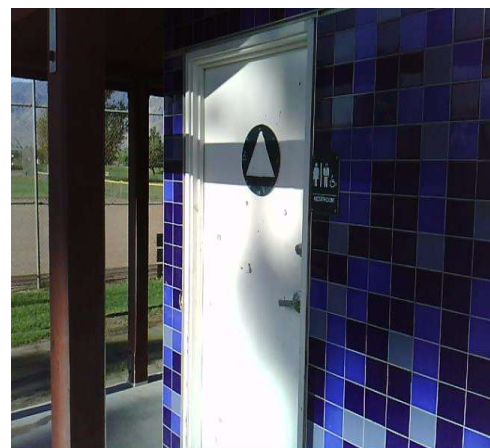
Costing Info (Estimated)

Modify restroom \$14,000

Code Reference ADA 603, 213, 213.1, 603.1

Notes : Locked at time of inspection.

Record Number 17070



Demuth Park

Restrooms - Restroom Building Next To Baseball Fields #7 And 8 : Restroom , Mirror

Womens Restroom Next To Baseball Field #8

Restroom , Mirror : Mirror Bottom Edge Height

Finding

The bottom edge of the reflective surface of the mirror is not at the correct height.

On-Site Finding 57.87 inches

Recommendation

Lower the mirror so the bottom edge of the reflective surface is no higher than recommended above the finished floor.

Recommendation Up to 40.00 inches

Costing Info (Estimated)

Lower mirror \$300

Code Reference ADA 603, 213, 603.3, CA 11B-603.3

Record Number 16988



Restrooms - Restroom Building Next To Baseball Fields #7 And 8 : Restroom , Disposal

Womens Restroom Next To Baseball Field #8

Restroom , Disposal : Distance from front of the closet

Finding

Feminine products disposal distance from front of the toilet is not compliant.

On-Site Finding 28.00 inches

Recommendation

Provide feminine products disposal at the required distance from front of the toilet.

Recommendation Up to 12.00 inches

Costing Info (Estimated)

Provide compliant disposal \$277

Code Reference

Record Number 19468



Demuth Park

Restrooms - Restroom Building Next To Baseball Fields #7 And 8 : Restroom , Toilet Compartment

Womens Restroom Next To Baseball Field #8

Restroom , Toilet Compartment : Coat Hook Height

Finding

The coat hook is not mounted at the correct height.

On-Site Finding 66.25 inches

Recommendation

Mount the coat hook at the recommended height.

Recommendation 15.00 - 48.00 inches

Costing Info (Estimated)

Move coat hook \$50

Code Reference ADA 308, 603.4, 308.1,CA
11B-308,CA 11B-603.4,CA
11B-604.8.3

Record Number 19467



Restrooms - Restroom Building Next To Baseball Fields #7 And 8 : Restroom

Womens Restroom Next To Baseball Field #8

Restroom : Door Handle

Finding

The inside handle is not located near the latch.

On-Site Finding None Found

Recommendation

Adjust the inside handle so that it is located near the latch.

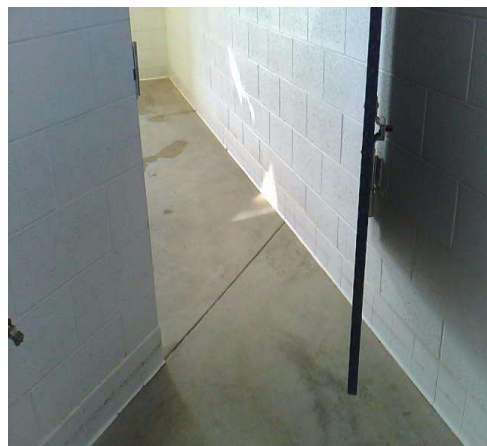
Recommendation See Recommendation

Costing Info (Estimated)

Adjust handle \$129

Code Reference ADA 404, 213, 604, 604.8.1.2,CA
11B-404.2.7,CA 11B-604.8.1.2

Record Number 19466



Demuth Park

**Restrooms - Restroom Building Next To Baseball Fields #7 And 8 :
Restroom , Compartment Door**

Womens Restroom Next To Baseball Field #8

Restroom , Compartment Door : Compartment
Door Handle

Finding

The door to the compartment does not have an accessible handle on both sides.

On-Site Finding Not on both sides.

Recommendation

Provide an accessible handle mounted on the door of the compartment near the latch.

Recommendation See Recommendation

Costing Info (Estimated)

Install accessible handle on stall door \$250

Code Reference ADA 404, 213, 604, 604.8.1.2,
604.8,CA 11B-404.2.7,CA
11B-604.8.1.2

Record Number 19464



Demuth Park

**Restrooms - Restroom Building Next To Baseball Fields #7 And 8 :
Restroom , Compartment Door**

Womens Restroom Next To Baseball Field #8

Restroom , Compartment Door : Compartment Door

Finding

Door does not close automatically.

On-Site Finding Missing Hardware

Recommendation

Provide an automatic door closer, spring hinge, pull bar or accessible handle mounted on the inside of the compartment door to the compartment designated to be accessible in the restroom.

Recommendation See Recommendation

Costing Info (Estimated)

Install accessible hardware on stall door \$269

Code Reference ADA 404, 604.8.1.2, 604.8,CA
11B-604.8.1.2

Record Number 19465



Demuth Park

**Restrooms - Restroom Building Next To Baseball Fields #7 And 8 :
Restroom , Grab Bars**

Womens Restroom Next To Baseball Field #8

Restroom , Grab Bars : Side Grab Bar Height

Finding

The height of the side grab bar is not at the correct height.

On-Site Finding 32.50 inches

Recommendation

Remount the grab bar so it is at the correct height.

Recommendation 33.00 inches

Costing Info (Estimated)

Relocate compliant grab bars and patch \$500

Code Reference ADA 603, 609, 609.4,CA
11B-609.4,CA 11B-604.5

Record Number 19462



**Restrooms - Restroom Building Next To Baseball Fields #7 And 8 :
Restroom , Grab Bars**

Womens Restroom Next To Baseball Field #8

Restroom , Grab Bars : Rear Grab Bar Height

Finding

The grab bar on the rear wall is not at the correct height.

On-Site Finding 32.50 inches

Recommendation

Remount the rear grab bar in the compartment designated to be accessible so the height of the gripping surface is at the correct height.

Recommendation 33.00 inches

Costing Info (Estimated)

Provide compliant grab bars \$231

Code Reference ADA 603, 609, 609.4,CA 11B-609.4

Record Number 19463



Demuth Park

**Restrooms - Restroom Building Next To Baseball Fields #7 And 8 :
Restroom , Grab Bars**

Womens Restroom Next To Baseball Field #8

Restroom , Grab Bars : Distance from Front Edge of Toilet to Front of Grab Bar

Finding

The distance from the front edge of the toilet to the front edge of the side grab bar is insufficient.

On-Site Finding 21.50 inches

Recommendation

Install or relocate the side grab bar so that the distance from the front edge of the toilet to the front edge of the side grab bar meets the required minimum distance.

Recommendation At least 24.00 inches

Costing Info (Estimated)

Provide compliant grab bar \$267

Code Reference CA 11B-604.5.1

Record Number 19461



**Restrooms - Restroom Building Next To Baseball Fields #7 And 8 :
Restroom , Grab Bars**

Womens Restroom Next To Baseball Field #8

Restroom , Grab Bars : Distance from Back Wall to Front of Grab Bar

Finding

The distance from the back wall to the front of the grab bar is less than required.

On-Site Finding 53.50 inches

Recommendation

Install or move the grab bar to create the required distance from the back wall to the front of the grab bar.

Recommendation At least 54.00 inches

Costing Info (Estimated)

Provide compliant grab bar \$267

Code Reference ADA 603, 609, 604.5.1,CA 11B-604.5.1,CA 11B-609

Record Number 19460



Demuth Park

Restrooms - Restroom Building Next To Baseball Fields #7 And 8 : Restroom , Door Signage

Womens Restroom Next To Baseball Field #8

Door Sign - Female

Restroom , Door Signage : No Door Signage

Finding

There is no gender use signage on the entrance door.

On-Site Finding None Found

Recommendation

Post gender use signage on the center of the door at the required height.

Recommendation See Recommendation

Costing Info (Estimated)

Install signage \$158

Code Reference CA 11B-216.8,CA 11B-703.7.2.6

Record Number 16989



Restrooms - Restroom Building Next To Baseball Fields #7 And 8 : Restroom , Lavatory

Womens Restroom Next To Baseball Field #8

Lavatory

Restroom , Lavatory : Lavatory Pipes Not Wrapped

Finding

The pipes under the lavatory do not provide protection against contact.

On-Site Finding Pipes not wrapped.

Recommendation

Insulate or otherwise configure pipes under the lavatory to protect against contact. Make certain there are no sharp or abrasive surfaces under the lavatory.

Recommendation See Recommendation

Costing Info (Estimated)

Wrap pipes \$149

Code Reference ADA 213, 606, 606.5,CA 11B-606.5

Record Number 16986



Demuth Park

**Restrooms - Restroom Building Next To Baseball Fields #7 And 8 :
Restroom , Lavatory**

**Womens Restroom Next To Baseball Field #8
Lavatory**

Restroom , Lavatory : Lavatory - Supply Lines
not wrapped

Finding

Supply lines are not wrapped at the lavatory.

On-Site Finding Not Wrapped

Recommendation

Wrap the supply lines around lavatory according to compliance.

Recommendation See Recommendation

Costing Info (Estimated)

Wrap supply lines \$149

Code Reference ADA 213, 606, 606.5,CA 11B-606.5

Record Number 16987



**Restrooms - Restroom Building Next To Baseball Fields #7 And 8 :
Restroom , Dispensers**

**Womens Restroom Next To Baseball Field #8
Soap**

Restroom , Dispensers : Dispenser Height

Finding

The height of the controls and operating mechanisms for the dispenser is not at the correct height.

On-Site Finding 42.00 inches

Recommendation

Relocate the dispenser to the correct height.

Recommendation Up to 40.00 inches

Costing Info (Estimated)

Provide compliant dispenser \$277

Code Reference ADA 309, 205, 308, 606, 308.1,CA 11B-603.5

Record Number 16985



Demuth Park

**Restrooms - Restroom Building Next To Baseball Fields #7 And 8 :
Restroom , Wall Signage**

**Womens Restroom Next To Baseball Field #8
Wall Sign**

Restroom , Wall Signage : No Wall Signage

Finding

There is no signage indicating accessibility on the latch side of the entry door of the restroom.

On-Site Finding None Found

Recommendation

Provide compliant signage on latch side of door.

Recommendation See Recommendation

Costing Info (Estimated)

Install signage \$158

Code Reference ADA 703, 216, 216.8,CA 11B-216.8

Record Number 16990



Demuth Park

Restrooms - Restrooms Next To Play Area : Restroom , Compartment Door

Womens Restroom Next To Play Area

Restroom , Compartment Door : Compartment Door

Finding

Door does not close automatically.

On-Site Finding Missing Hardware

Recommendation

Provide an automatic door closer, spring hinge, pull bar or accessible handle mounted on the inside of the compartment door to the compartment designated to be accessible in the restroom.

Recommendation See Recommendation

Costing Info (Estimated)

Install accessible hardware on stall door \$269

Code Reference ADA 404, 604.8.1.2, 604.8,CA 11B-604.8.1.2

Record Number 17081



Demuth Park

Restrooms - Restrooms Next To Play Area : Restroom

Womens Restroom Next To Play Area

Restroom : Door Handle

Finding

The inside handle is not located near the latch.

On-Site Finding None Found

Recommendation

Adjust the inside handle so that it is located near the latch.

Recommendation See Recommendation

Costing Info (Estimated)

Adjust handle \$129

Code Reference ADA 404, 213, 604, 604.8.1.2,CA 11B-404.2.7,CA 11B-604.8.1.2

Record Number 17082



Restrooms - Restrooms Next To Play Area : Restroom

Womens Restroom Next To Play Area

Restroom : Toilet Compartment Door

Finding

The compartment door is located in front of the water closet.

On-Site Finding Not Located

Recommendation

Reconfigure the toilet compartment to provide a compliant door that is located adjacent to the water closet.

Recommendation See Recommendation

Costing Info (Estimated)

\$4,000

Code Reference ADA 604.8.1.2,CA 11B-604.8.1.2

Record Number 17080



Demuth Park

Restrooms - Restrooms Next To Play Area : Restroom , Grab Bars

Womens Restroom Next To Play Area

Restroom , Grab Bars : Distance from Front Edge of Toilet to Front of Grab Bar

Finding

The distance from the front edge of the toilet to the front edge of the side grab bar is insufficient.

On-Site Finding 23.25 inches

Recommendation

Install or relocate the side grab bar so that the distance from the front edge of the toilet to the front edge of the side grab bar meets the required minimum distance.

Recommendation At least 24.00 inches

Costing Info (Estimated)

Provide compliant grab bar \$267

Code Reference CA 11B-604.5.1

Record Number 17077



Restrooms - Restrooms Next To Play Area : Restroom , Grab Bars

Womens Restroom Next To Play Area

Restroom , Grab Bars : Rear Grab Bar Height

Finding

The grab bar on the rear wall is not at the correct height.

On-Site Finding 32.25 inches

Recommendation

Remount the rear grab bar in the compartment designated to be accessible so the height of the gripping surface is at the correct height.

Recommendation 33.00 inches

Costing Info (Estimated)

Provide compliant grab bars \$231

Code Reference ADA 603, 609, 609.4, CA 11B-609.4

Record Number 17079



Demuth Park

Restrooms - Restrooms Next To Play Area : Restroom , Grab Bars

Womens Restroom Next To Play Area

Restroom , Grab Bars : Side Grab Bar Height

Finding

The height of the side grab bar is not at the correct height.

On-Site Finding 32.50 inches

Recommendation

Remount the grab bar so it is at the correct height.

Recommendation 33.00 inches

Costing Info (Estimated)

Relocate compliant grab bars and patch \$500

Code Reference ADA 603, 609, 609.4,CA
11B-609.4,CA 11B-604.5

Record Number 17078



Restrooms - Restrooms Next To Play Area : Restroom , Grab Bars

Womens Restroom Next To Play Area

Restroom , Grab Bars : Grab Bar Distance From Back Wall

Finding

The distance from the rear wall to the side grab bar is greater than allowed.

On-Site Finding 12.25 inches

Recommendation

Remount the side grab bar so it meets the distance requirements from the back wall.

Recommendation Up to 12.00 inches

Costing Info (Estimated)

Provide compliant grab bar \$267

Code Reference ADA 603, 609, 604.5.1,CA
11B-604.5.1

Record Number 17076



Demuth Park

Restrooms - Restrooms Next To Play Area : Restroom , Toilet Compartment

Womens Restroom Next To Play Area

Restroom , Toilet Compartment : Toilet Paper Dispenser Distance From Seat

Finding

The location of the toilet paper dispenser is not within the required distance from the front edge of the toilet seat.

On-Site Finding 14.00 inches

Recommendation

Remount the toilet paper dispenser so it is within the required distance from the front edge of the toilet seat. Toilet paper dispensers must allow continuous paper flow and shall not interfere with the use of the side grab bar.

Recommendation 7.00 - 9.00 inches

Costing Info (Estimated)

Provide compliant dispenser \$277

Code Reference ADA 603, 604.7,CA 11B-604.7,CA 11B-309.4

Record Number 17083



Restrooms - Restrooms Next To Play Area : Restroom , Toilet

Womens Restroom Next To Play Area

Restroom , Toilet : Toilet Clear Floor Space

Finding

There is less than the required minimum space in front of the toilet.

On-Site Finding 29.37 inches

Recommendation

Create the required minimum clear space in front of the toilet.

Recommendation At least 48.00 inches

Costing Info (Estimated)

Modify space \$3,500

Code Reference ADA 603,CA 11B-604.8.1

Record Number 17075



Demuth Park

Restrooms - Restrooms Next To Play Area : Restroom , Dispensers

Womens Restroom Next To Play Area

Blower

Restroom , Dispensers : Dispenser Height

Finding

The height of the controls and operating mechanisms for the dispenser is not at the correct height.

On-Site Finding 46.50 inches

Recommendation

Relocate the dispenser to the correct height.

Recommendation Up to 40.00 inches

Costing Info (Estimated)

Provide compliant dispenser \$277

Code Reference ADA 309, 205, 308, 606, 308.1,CA 11B-603.5

Record Number 17064



Restrooms - Restrooms Next To Play Area : Restroom , Door Signage

Womens Restroom Next To Play Area

Door Sign - Female

Restroom , Door Signage : No Door Signage

Finding

There is no gender use signage on the entrance door.

On-Site Finding None Found

Recommendation

Post gender use signage on the center of the door at the required height.

Recommendation See Recommendation

Costing Info (Estimated)

Install signage \$158

Code Reference CA 11B-216.8,CA 11B-703.7.2.6

Record Number 17068



Demuth Park

Restrooms - Restrooms Next To Play Area : Restroom , Lavatory

Womens Restroom Next To Play Area

Lavatory

Restroom , Lavatory : Lavatory Pipes Not Wrapped

Finding

The pipes under the lavatory do not provide protection against contact.

On-Site Finding Pipes not wrapped.

Recommendation

Insulate or otherwise configure pipes under the lavatory to protect against contact. Make certain there are no sharp or abrasive surfaces under the lavatory.

Recommendation See Recommendation

Costing Info (Estimated)

Wrap pipes \$149

Code Reference ADA 213, 606, 606.5,CA 11B-606.5

Record Number 17066



Restrooms - Restrooms Next To Play Area : Restroom , Lavatory

Womens Restroom Next To Play Area

Lavatory

Restroom , Lavatory : Lavatory Surface Height

Finding

The height of the counter surface is greater than allowed.

On-Site Finding 34.37 inches

Recommendation

Relocate or replace the lavatory to provide a maximum counter surface height of no greater than recommended.

Recommendation Up to 34.00 inches

Costing Info (Estimated)

Provide compliant lavatory \$1,286

Code Reference ADA 213, 606, 606.3,CA 11B-213,CA 11B-606.3

Record Number 17065



Demuth Park

Restrooms - Restrooms Next To Play Area : Restroom

Womens Restroom Next To Play Area

Lavatory

Restroom : Toe Clearance

Finding

There is not enough toe clearance at the restroom lavatory.

On-Site Finding 8.75 inches

Recommendation

Provide minimum required toe clearance.

Recommendation At least 9.00 inches

Costing Info (Estimated)

Readjust space \$289

Code Reference ADA 213, 606, 606.2, 306.2.1

Record Number 17067



Restrooms - Restrooms Next To Play Area : Restroom , Dispensers

Womens Restroom Next To Play Area

Soap

Restroom , Dispensers : Dispenser Height

Finding

The height of the controls and operating mechanisms for the dispenser is not at the correct height.

On-Site Finding 50.00 inches

Recommendation

Relocate the dispenser to the correct height.

Recommendation Up to 40.00 inches

Costing Info (Estimated)

Provide compliant dispenser \$277

Code Reference ADA 309, 205, 308, 606, 308.1,CA 11B-603.5

Record Number 17063



Demuth Park

Restrooms - Restrooms Next To Play Area : Restroom , Wall Signage

**Womens Restroom Next To Play Area
Wall Sign**

Restroom , Wall Signage : No Wall Signage

Finding

There is no signage indicating accessibility on the latch side of the entry door of the restroom.

On-Site Finding None Found

Recommendation

Provide compliant signage on latch side of door.

Recommendation See Recommendation

Costing Info (Estimated)

Install signage \$158

Code Reference ADA 703, 216, 216.8, CA 11B-216.8

Record Number 17069



Restrooms - Restrooms Next To Play Area : Restroom

Womens Restroom Next To Play Area

Restroom : Circular Turning Space Diameter

Finding

There is not sufficient clear floor space in the restroom to accommodate an individual in a wheelchair.

On-Site Finding 53.00 inches

Recommendation

Modify the restroom to provide sufficient clear floor space for a turning radius in the restroom to accommodate an individual in a wheelchair.

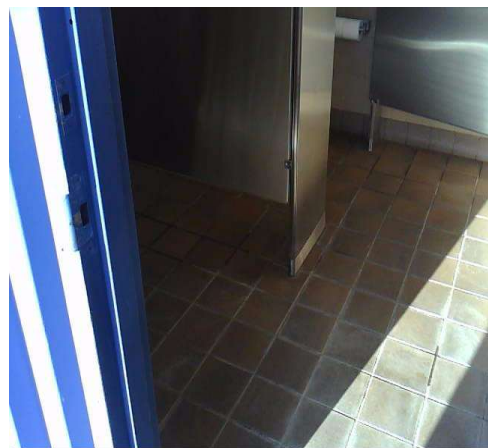
Recommendation At least 60.00 inches

Costing Info (Estimated)

Install single-use toilet room \$14,000

Code Reference ADA 603, 304, 304.3.1, 603.2.1, 304.3, 603.2, CA 11B-304.3

Record Number 17062



Demuth Park

Drinking Fountains - Exterior : Drinking Fountain

Drinking Fountain At Baseball Field #3

Drinking Fountain : Toe Clearance

Finding

The toe clearance is less than required.

On-Site Finding 0.00 inches

Recommendation

Provide a fountain with the required knee and toe clearances.

Recommendation At least 9.00 inches

Costing Info (Estimated)

Install new high/low fountain \$2,500

Code Reference ADA 305, 306, 211, 602, 306.2, 602.2, CA 11B-602.2, CA 11B-305

Record Number 19373



Drinking Fountains - Exterior : Drinking Fountain

Drinking Fountain At Baseball Field #3

Drinking Fountain : Knee Clearance

Finding

There is less than the required minimum knee clearance height.

On-Site Finding 0.00 inches

Recommendation

Provide a fountain with the required knee and toe clearances.

Recommendation At least 27.00 inches

Costing Info (Estimated)

Install new high/low fountain \$2,500

Code Reference ADA 305, 306, 211, 602, 306.3, 602.2, CA 11B-602.2, CA 11B-305

Record Number 19375



Demuth Park

Drinking Fountains - Exterior : Drinking Fountain

Drinking Fountain At Baseball Field #3

Drinking Fountain : Non-Accessible Controls

Finding

The faucet controls require tight grasping or pinching of the wrist to operate.

On-Site Finding Not Accessible

Recommendation

Provide fountain controls with controls that do not require tight grasping or pinching of the wrist to operate.

Recommendation See Recommendation

Costing Info (Estimated)

Replace knob faucets with paddle faucets \$392

Code Reference ADA 309, 205, 211, 602, 309.4, 602.3, CA 11B-309.4, CA 11B-602.3

Record Number 19372



Drinking Fountains - Exterior : Drinking Fountain

Drinking Fountain At Baseball Field #3

Drinking Fountain : Fountain Type

Finding

The provided drinking fountain is not a Hi-Low fountain.

On-Site Finding Fountain Not Compliant

Recommendation

Replace the drinking fountain with a compliant Hi-Low fountain.

Recommendation See Recommendation

Costing Info (Estimated)

Install new high/low fountain \$2,500

Code Reference ADA 305, 602, 211.2, CA 11B-211.2, CA 11B-602

Record Number 19371



Demuth Park

Drinking Fountains - Exterior : Drinking Fountain

Drinking Fountain At Baseball Field #3

Drinking Fountain : Spout Distance to Front

Finding

The distance from the front edge of the unit (including bumpers) to the spout location, is greater than the allowed maximum distance.

On-Site Finding 12.00 inches

Recommendation

Make sure that the distance from the front of the fountain to the flow of the water is not greater than the allowed maximum distance.

Recommendation Up to 6.00 inches

Costing Info (Estimated)

Install new high/low fountain \$2,500

Code Reference ADA 211, 602, 602.5,CA 11B-602.5

Record Number 19376



Drinking Fountains - Exterior : Drinking Fountains

Drinking Fountain At Baseball Field #3

Drinking Fountains : Drinking Fountain

Finding

The drinking fountain is not on accessible route.

On-Site Finding None Found

Recommendation

Make sure the drinking fountain is on an accessible route.

Recommendation See Recommendation

Costing Info (Estimated)

\$1,840

Code Reference ADA 305, 306, 211, 602, 402.1, 602.1

Record Number 19374



Demuth Park

Drinking Fountains - Exterior : Drinking Fountains

Drinking Fountain At Baseball Field #5

Drinking Fountains : Drinking Fountain

Finding

The drinking fountain is not on accessible route.

On-Site Finding None Found

Recommendation

Make sure the drinking fountain is on an accessible route.

Recommendation See Recommendation

Costing Info (Estimated)

\$1,840

Code Reference ADA 305, 306, 211, 602, 402.1, 602.1

Record Number 19368



Drinking Fountains - Exterior : Drinking Fountain

Drinking Fountain At Baseball Field #5

Drinking Fountain : Spout Distance to Front

Finding

The distance from the front edge of the unit (including bumpers) to the spout location, is greater than the allowed maximum distance.

On-Site Finding 10.00 inches

Recommendation

Make sure that the distance from the front of the fountain to the flow of the water is not greater than the allowed maximum distance.

Recommendation Up to 6.00 inches

Costing Info (Estimated)

Install new high/low fountain \$2,500

Code Reference ADA 211, 602, 602.5, CA 11B-602.5

Record Number 19370



Demuth Park

Drinking Fountains - Exterior : Drinking Fountain

Drinking Fountain At Baseball Field #5

Drinking Fountain : Fountain Type

Finding

The provided drinking fountain is not a Hi-Low fountain.

On-Site Finding Fountain Not Compliant

Recommendation

Replace the drinking fountain with a compliant Hi-Low fountain.

Recommendation See Recommendation

Costing Info (Estimated)

Install new high/low fountain \$2,500

Code Reference ADA 305, 602, 211.2,CA
11B-211.2,CA 11B-602

Record Number 19365



Drinking Fountains - Exterior : Drinking Fountain

Drinking Fountain At Baseball Field #5

Drinking Fountain : Non-Accessible Controls

Finding

The faucet controls require tight grasping or pinching of the wrist to operate.

On-Site Finding Not Accessible

Recommendation

Provide fountain controls with controls that do not require tight grasping or pinching of the wrist to operate.

Recommendation See Recommendation

Costing Info (Estimated)

Replace knob faucets with paddle faucets \$392

Code Reference ADA 309, 205, 211, 602, 309.4,
602.3,CA 11B-309.4,CA 11B-602.3

Record Number 19366



Demuth Park

Drinking Fountains - Exterior : Drinking Fountain

Drinking Fountain At Baseball Field #5

Drinking Fountain : Knee Clearance

Finding

There is less than the required minimum knee clearance height.

On-Site Finding 0.00 inches

Recommendation

Provide a fountain with the required knee and toe clearances.

Recommendation At least 27.00 inches

Costing Info (Estimated)

Install new high/low fountain \$2,500

Code Reference ADA 305, 306, 211, 602, 306.3, 602.2, CA 11B-602.2, CA 11B-305

Record Number 19369



Drinking Fountains - Exterior : Drinking Fountain

Drinking Fountain At Baseball Field #5

Drinking Fountain : Toe Clearance

Finding

The toe clearance is less than required.

On-Site Finding 0.00 inches

Recommendation

Provide a fountain with the required knee and toe clearances.

Recommendation At least 9.00 inches

Costing Info (Estimated)

Install new high/low fountain \$2,500

Code Reference ADA 305, 306, 211, 602, 306.2, 602.2, CA 11B-602.2, CA 11B-305

Record Number 19367



Demuth Park

Drinking Fountains - Exterior : Drinking Fountain

Drinking Fountain At East Restrooms Next To Baseball Field #1

Drinking Fountain : Fountain Type

Finding

The provided drinking fountain is not a Hi-Low fountain.

On-Site Finding Fountain Not Compliant

Recommendation

Replace the drinking fountain with a compliant Hi-Low fountain.

Recommendation See Recommendation

Costing Info (Estimated)

Install new high/low fountain \$2,500

Code Reference ADA 305, 602, 211.2,CA
11B-211.2,CA 11B-602

Record Number 19469



Drinking Fountains - Exterior : Drinking Fountains

Drinking Fountain At East Restrooms Next To Baseball Field #1

Drinking Fountains : Clear Floor Space Slope

Finding

The clear floor space slope is not compliant.

On-Site Finding 2.60 percent

Recommendation

Provide compliant clear floor space at the drinking fountain.

Recommendation Up to 2.00 percent

Costing Info (Estimated)

Provide clear floor space \$2,200

Code Reference ADA 305, 306, 211, 602, 305.2,CA
11B-602.2

Record Number 19470



Demuth Park

Drinking Fountains - Exterior : Drinking Fountain

Drinking Fountain At Picnic Area Next To Tennis Courts

Drinking Fountain : No Detectable Warnings

Finding

The drinking fountain is not set entirely in an alcove.

On-Site Finding None Found

Recommendation

If the drinking fountain is not set in an alcove it shall provide a side rail or wing wall next to each side of the fountain to prevent it from protruding into the primary path of travel.

Recommendation See Recommendation

Costing Info (Estimated)

Install wing walls or relocate object \$640

Code Reference ADA 307.2, 602.1,CA 11B-602.9

Record Number 16946



Drinking Fountains - Exterior : Drinking Fountains

Drinking Fountain At Picnic Area Next To Tennis Courts

Drinking Fountains : Protruding Object

Finding

The drinking fountain is a protruding object.

On-Site Finding None

Recommendation

Make sure that the fountain is not a protruding object.

Recommendation See Recommendation

Costing Info (Estimated)

Modify fountain \$550

Code Reference ADA 305, 306, 211, 602, 307.2,CA 11B-602,CA 11B-307.2

Record Number 16945



Demuth Park

Drinking Fountains - Exterior : Drinking Fountain

Drinking Fountain Between Baseball Fields # 7 And 8

Drinking Fountain : Fountain Type

Finding

The provided drinking fountain is not a Hi-Low fountain.

On-Site Finding Fountain Not Compliant

Recommendation

Replace the drinking fountain with a compliant Hi-Low fountain.

Recommendation See Recommendation

Costing Info (Estimated)

Install new high/low fountain \$2,500

Code Reference ADA 305, 602, 211.2,CA
11B-211.2,CA 11B-602

Record Number 19411



Drinking Fountains - Exterior : Drinking Fountain

Drinking Fountain Between Baseball Fields # 7 And 8

Drinking Fountain : Spout Distance to Front

Finding

The distance from the front edge of the unit (including bumpers) to the spout location, is greater than the allowed maximum distance.

On-Site Finding 7.00 inches

Recommendation

Make sure that the distance from the front of the fountain to the flow of the water is not greater than the allowed maximum distance.

Recommendation Up to 6.00 inches

Costing Info (Estimated)

Install new high/low fountain \$2,500

Code Reference ADA 211, 602, 602.5,CA 11B-602.5

Record Number 19416



Demuth Park

Drinking Fountains - Exterior : Drinking Fountains

Drinking Fountain Between Baseball Fields # 7 And 8

Drinking Fountains : Drinking Fountain

Finding

The drinking fountain is not on accessible route.

On-Site Finding None Found

Recommendation

Make sure the drinking fountain is on an accessible route.

Recommendation See Recommendation

Costing Info (Estimated)

\$1,840

Code Reference ADA 305, 306, 211, 602, 402.1, 602.1

Record Number 19414



Drinking Fountains - Exterior : Drinking Fountain

Drinking Fountain Between Baseball Fields # 7 And 8

Drinking Fountain : Non-Accessible Controls

Finding

The faucet controls require tight grasping or pinching of the wrist to operate.

On-Site Finding Not Accessible

Recommendation

Provide fountain controls with controls that do not require tight grasping or pinching of the wrist to operate.

Recommendation See Recommendation

Costing Info (Estimated)

Replace knob faucets with paddle faucets \$392

Code Reference ADA 309, 205, 211, 602, 309.4, 602.3, CA 11B-309.4, CA 11B-602.3

Record Number 19412



Demuth Park

Drinking Fountains - Exterior : Drinking Fountain

Drinking Fountain Between Baseball Fields # 7 And 8

Drinking Fountain : Knee Clearance

Finding

There is less than the required minimum knee clearance height.

On-Site Finding 0.00 inches

Recommendation

Provide a fountain with the required knee and toe clearances.

Recommendation At least 27.00 inches

Costing Info (Estimated)

Install new high/low fountain \$2,500

Code Reference ADA 305, 306, 211, 602, 306.3, 602.2,CA 11B-602.2,CA 11B-305

Record Number 19415



Drinking Fountains - Exterior : Drinking Fountain

Drinking Fountain Between Baseball Fields # 7 And 8

Drinking Fountain : Toe Clearance

Finding

The toe clearance is less than required.

On-Site Finding 0.00 inches

Recommendation

Provide a fountain with the required knee and toe clearances.

Recommendation At least 9.00 inches

Costing Info (Estimated)

Install new high/low fountain \$2,500

Code Reference ADA 305, 306, 211, 602, 306.2, 602.2,CA 11B-602.2,CA 11B-305

Record Number 19413



Demuth Park

Drinking Fountains - Exterior : Drinking Fountain

Drinking Fountain In Baseball Field #5 South Duggout

Drinking Fountain : Stream Trajectory

Finding

The water flow trajectory is not parallel to the front of the drinking fountain.

On-Site Finding Not Compliant

Recommendation

Provide a water flow trajectory that is parallel to the front of the drinking fountain.

Recommendation See Recommendation

Costing Info (Estimated)

\$2,875

Code Reference ADA 602.6, CA 11B-602.6

Record Number 19388



Drinking Fountains - Exterior : Drinking Fountain

Drinking Fountain In Baseball Field #5 South Duggout

Drinking Fountain : Spout Distance to Front

Finding

The distance from the front edge of the unit (including bumpers) to the spout location, is greater than the allowed maximum distance.

On-Site Finding 9.00 inches

Recommendation

Make sure that the distance from the front of the fountain to the flow of the water is not greater than the allowed maximum distance.

Recommendation Up to 6.00 inches

Costing Info (Estimated)

Install new high/low fountain \$2,500

Code Reference ADA 211, 602, 602.5, CA 11B-602.5

Record Number 19387



Demuth Park

Drinking Fountains - Exterior : Drinking Fountain

Drinking Fountain In Baseball Field #5 South Duggout

Drinking Fountain : Fountain Type

Finding

The provided drinking fountain is not a Hi-Low fountain.

On-Site Finding Fountain Not Compliant

Recommendation

Replace the drinking fountain with a compliant Hi-Low fountain.

Recommendation See Recommendation

Costing Info (Estimated)

Install new high/low fountain \$2,500

Code Reference ADA 305, 602, 211.2,CA
11B-211.2,CA 11B-602

Record Number 19384



Drinking Fountains - Exterior : Drinking Fountains

Drinking Fountain In Baseball Field #5 South Duggout

Drinking Fountains : Clear Floor Space Slope

Finding

The clear floor space slope is not compliant.

On-Site Finding 5.20 percent

Recommendation

Provide compliant clear floor space at the drinking fountain.

Recommendation Up to 2.00 percent

Costing Info (Estimated)

Provide clear floor space \$2,200

Code Reference ADA 305, 306, 211, 602, 305.2,CA
11B-602.2

Record Number 19389



Demuth Park

Drinking Fountains - Exterior : Drinking Fountain

Drinking Fountain In Baseball Field #5 South Duggout

Drinking Fountain : Knee Clearance

Finding

There is less than the required minimum knee clearance height.

On-Site Finding 0.00 inches

Recommendation

Provide a fountain with the required knee and toe clearances.

Recommendation At least 27.00 inches

Costing Info (Estimated)

Install new high/low fountain \$2,500

Code Reference ADA 305, 306, 211, 602, 306.3, 602.2, CA 11B-602.2, CA 11B-305

Record Number 19386



Drinking Fountains - Exterior : Drinking Fountain

Drinking Fountain In Baseball Field #5 South Duggout

Drinking Fountain : Toe Clearance

Finding

The toe clearance is less than required.

On-Site Finding 0.00 inches

Recommendation

Provide a fountain with the required knee and toe clearances.

Recommendation At least 9.00 inches

Costing Info (Estimated)

Install new high/low fountain \$2,500

Code Reference ADA 305, 306, 211, 602, 306.2, 602.2, CA 11B-602.2, CA 11B-305

Record Number 19385



Demuth Park

Drinking Fountains - Exterior : Drinking Fountain

Drinking Fountain In Baseball Field #5 West Duggout

Drinking Fountain : Fountain Type

Finding

The provided drinking fountain is not a Hi-Low fountain.

On-Site Finding Fountain Not Compliant

Recommendation

Replace the drinking fountain with a compliant Hi-Low fountain.

Recommendation See Recommendation

Costing Info (Estimated)

Install new high/low fountain \$2,500

Code Reference ADA 305, 602, 211.2,CA
11B-211.2,CA 11B-602

Record Number 19421



Drinking Fountains - Exterior : Drinking Fountain

Drinking Fountain In Baseball Field #5 West Duggout

Drinking Fountain : Spout Distance to Front

Finding

The distance from the front edge of the unit (including bumpers) to the spout location, is greater than the allowed maximum distance.

On-Site Finding 10.00 inches

Recommendation

Make sure that the distance from the front of the fountain to the flow of the water is not greater than the allowed maximum distance.

Recommendation Up to 6.00 inches

Costing Info (Estimated)

Install new high/low fountain \$2,500

Code Reference ADA 211, 602, 602.5,CA 11B-602.5

Record Number 19425



Demuth Park

Drinking Fountains - Exterior : Drinking Fountain

Drinking Fountain In Baseball Field #5 West Duggout

Drinking Fountain : Toe Clearance

Finding

The toe clearance is less than required.

On-Site Finding 0.00 inches

Recommendation

Provide a fountain with the required knee and toe clearances.

Recommendation At least 9.00 inches

Costing Info (Estimated)

Install new high/low fountain \$2,500

Code Reference ADA 305, 306, 211, 602, 306.2, 602.2, CA 11B-602.2, CA 11B-305

Record Number 19423



Drinking Fountains - Exterior : Drinking Fountain

Drinking Fountain In Baseball Field #5 West Duggout

Drinking Fountain : Knee Clearance

Finding

There is less than the required minimum knee clearance height.

On-Site Finding 0.00 inches

Recommendation

Provide a fountain with the required knee and toe clearances.

Recommendation At least 27.00 inches

Costing Info (Estimated)

Install new high/low fountain \$2,500

Code Reference ADA 305, 306, 211, 602, 306.3, 602.2, CA 11B-602.2, CA 11B-305

Record Number 19424



Demuth Park

Drinking Fountains - Exterior : Drinking Fountain

Drinking Fountain In Baseball Field #5 West Duggout

Drinking Fountain : Non-Accessible Controls

Finding

The faucet controls require tight grasping or pinching of the wrist to operate.

On-Site Finding Not Accessible

Recommendation

Provide fountain controls with controls that do not require tight grasping or pinching of the wrist to operate.

Recommendation See Recommendation

Costing Info (Estimated)

Replace knob faucets with paddle faucets \$392

Code Reference ADA 309, 205, 211, 602, 309.4, 602.3, CA 11B-309.4, CA 11B-602.3

Record Number 19422



Drinking Fountains - Exterior : Drinking Fountains

Drinking Fountain Next To Baseball Field #1

Drinking Fountains : Drinking Fountain

Finding

The drinking fountain is not on accessible route.

On-Site Finding None Found

Recommendation

Make sure the drinking fountain is on an accessible route.

Recommendation See Recommendation

Costing Info (Estimated)

\$1,840

Code Reference ADA 305, 306, 211, 602, 402.1, 602.1

Record Number 19356



Demuth Park

Drinking Fountains - Exterior : Drinking Fountain

Drinking Fountain Next To Baseball Field #1

Drinking Fountain : Spout Distance to Front

Finding

The distance from the front edge of the unit (including bumpers) to the spout location, is greater than the allowed maximum distance.

On-Site Finding 8.00 inches

Recommendation

Make sure that the distance from the front of the fountain to the flow of the water is not greater than the allowed maximum distance.

Recommendation Up to 6.00 inches

Costing Info (Estimated)

Install new high/low fountain \$2,500

Code Reference ADA 211, 602, 602.5,CA 11B-602.5

Record Number 19358



Drinking Fountains - Exterior : Drinking Fountain

Drinking Fountain Next To Baseball Field #1

Drinking Fountain : Fountain Type

Finding

The provided drinking fountain is not a Hi-Low fountain.

On-Site Finding Fountain Not Compliant

Recommendation

Replace the drinking fountain with a compliant Hi-Low fountain.

Recommendation See Recommendation

Costing Info (Estimated)

Install new high/low fountain \$2,500

Code Reference ADA 305, 602, 211.2,CA 11B-211.2,CA 11B-602

Record Number 19353



Demuth Park

Drinking Fountains - Exterior : Drinking Fountain

Drinking Fountain Next To Baseball Field #1

Drinking Fountain : Non-Accessible Controls

Finding

The faucet controls require tight grasping or pinching of the wrist to operate.

On-Site Finding Not Accessible

Recommendation

Provide fountain controls with controls that do not require tight grasping or pinching of the wrist to operate.

Recommendation See Recommendation

Costing Info (Estimated)

Replace knob faucets with paddle faucets \$392

Code Reference ADA 309, 205, 211, 602, 309.4, 602.3, CA 11B-309.4, CA 11B-602.3

Record Number 19354



Drinking Fountains - Exterior : Drinking Fountain

Drinking Fountain Next To Baseball Field #1

Drinking Fountain : Knee Clearance

Finding

There is less than the required minimum knee clearance height.

On-Site Finding 0.00 inches

Recommendation

Provide a fountain with the required knee and toe clearances.

Recommendation At least 27.00 inches

Costing Info (Estimated)

Install new high/low fountain \$2,500

Code Reference ADA 305, 306, 211, 602, 306.3, 602.2, CA 11B-602.2, CA 11B-305

Record Number 19357



Demuth Park

Drinking Fountains - Exterior : Drinking Fountain

Drinking Fountain Next To Baseball Field #1

Drinking Fountain : Toe Clearance

Finding

The toe clearance is less than required.

On-Site Finding 0.00 inches

Recommendation

Provide a fountain with the required knee and toe clearances.

Recommendation At least 9.00 inches

Costing Info (Estimated)

Install new high/low fountain \$2,500

Code Reference ADA 305, 306, 211, 602, 306.2, 602.2, CA 11B-602.2, CA 11B-305

Record Number 19355



Drinking Fountains - Exterior : Drinking Fountains

Drinking Fountain Next To Baseball Field #2 South Duggout

Drinking Fountains : Drinking Fountain

Finding

The drinking fountain is not on accessible route.

On-Site Finding None Found

Recommendation

Make sure the drinking fountain is on an accessible route.

Recommendation See Recommendation

Costing Info (Estimated)

\$1,840

Code Reference ADA 305, 306, 211, 602, 402.1, 602.1

Record Number 19400



Demuth Park

Drinking Fountains - Exterior : Drinking Fountain

Drinking Fountain Next To Baseball Field #2 South Duggout

Drinking Fountain : Spout Distance to Front

Finding

The distance from the front edge of the unit (including bumpers) to the spout location, is greater than the allowed maximum distance.

On-Site Finding 10.00 inches

Recommendation

Make sure that the distance from the front of the fountain to the flow of the water is not greater than the allowed maximum distance.

Recommendation Up to 6.00 inches

Costing Info (Estimated)

Install new high/low fountain \$2,500

Code Reference ADA 211, 602, 602.5,CA 11B-602.5

Record Number 19402



Drinking Fountains - Exterior : Drinking Fountain

Drinking Fountain Next To Baseball Field #2 South Duggout

Drinking Fountain : Fountain Type

Finding

The provided drinking fountain is not a Hi-Low fountain.

On-Site Finding Fountain Not Compliant

Recommendation

Replace the drinking fountain with a compliant Hi-Low fountain.

Recommendation See Recommendation

Costing Info (Estimated)

Install new high/low fountain \$2,500

Code Reference ADA 305, 602, 211.2,CA 11B-211.2,CA 11B-602

Record Number 19397



Demuth Park

Drinking Fountains - Exterior : Drinking Fountain

Drinking Fountain Next To Baseball Field #2 South Duggout

Drinking Fountain : Non-Accessible Controls

Finding

The faucet controls require tight grasping or pinching of the wrist to operate.

On-Site Finding Not Accessible

Recommendation

Provide fountain controls with controls that do not require tight grasping or pinching of the wrist to operate.

Recommendation See Recommendation

Costing Info (Estimated)

Replace knob faucets with paddle faucets \$392

Code Reference ADA 309, 205, 211, 602, 309.4, 602.3, CA 11B-309.4, CA 11B-602.3

Record Number 19398



Drinking Fountains - Exterior : Drinking Fountain

Drinking Fountain Next To Baseball Field #2 South Duggout

Drinking Fountain : Knee Clearance

Finding

There is less than the required minimum knee clearance height.

On-Site Finding 0.00 inches

Recommendation

Provide a fountain with the required knee and toe clearances.

Recommendation At least 27.00 inches

Costing Info (Estimated)

Install new high/low fountain \$2,500

Code Reference ADA 305, 306, 211, 602, 306.3, 602.2, CA 11B-602.2, CA 11B-305

Record Number 19401



Demuth Park

Drinking Fountains - Exterior : Drinking Fountain

Drinking Fountain Next To Baseball Field #2 South Duggout

Drinking Fountain : Toe Clearance

Finding

The toe clearance is less than required.

On-Site Finding 0.00 inches

Recommendation

Provide a fountain with the required knee and toe clearances.

Recommendation At least 9.00 inches

Costing Info (Estimated)

Install new high/low fountain \$2,500

Code Reference ADA 305, 306, 211, 602, 306.2, 602.2, CA 11B-602.2, CA 11B-305

Record Number 19399



Drinking Fountains - Exterior : Drinking Fountain

Drinking Fountain Next To Baseball Field #2 West Duggout

Drinking Fountain : Toe Clearance

Finding

The toe clearance is less than required.

On-Site Finding 0.00 inches

Recommendation

Provide a fountain with the required knee and toe clearances.

Recommendation At least 9.00 inches

Costing Info (Estimated)

Install new high/low fountain \$2,500

Code Reference ADA 305, 306, 211, 602, 306.2, 602.2, CA 11B-602.2, CA 11B-305

Record Number 19361



Demuth Park

Drinking Fountains - Exterior : Drinking Fountain

Drinking Fountain Next To Baseball Field #2 West Duggout

Drinking Fountain : Knee Clearance

Finding

There is less than the required minimum knee clearance height.

On-Site Finding 0.00 inches

Recommendation

Provide a fountain with the required knee and toe clearances.

Recommendation At least 27.00 inches

Costing Info (Estimated)

Install new high/low fountain \$2,500

Code Reference ADA 305, 306, 211, 602, 306.3, 602.2,CA 11B-602.2,CA 11B-305

Record Number 19363



Drinking Fountains - Exterior : Drinking Fountain

Drinking Fountain Next To Baseball Field #2 West Duggout

Drinking Fountain : Non-Accessible Controls

Finding

The faucet controls require tight grasping or pinching of the wrist to operate.

On-Site Finding Not Accessible

Recommendation

Provide fountain controls with controls that do not require tight grasping or pinching of the wrist to operate.

Recommendation See Recommendation

Costing Info (Estimated)

Replace knob faucets with paddle faucets \$392

Code Reference ADA 309, 205, 211, 602, 309.4, 602.3,CA 11B-309.4,CA 11B-602.3

Record Number 19360



Demuth Park

Drinking Fountains - Exterior : Drinking Fountain

Drinking Fountain Next To Baseball Field #2 West Duggout

Drinking Fountain : Fountain Type

Finding

The provided drinking fountain is not a Hi-Low fountain.

On-Site Finding Fountain Not Compliant

Recommendation

Replace the drinking fountain with a compliant Hi-Low fountain.

Recommendation See Recommendation

Costing Info (Estimated)

Install new high/low fountain \$2,500

Code Reference ADA 305, 602, 211.2,CA
11B-211.2,CA 11B-602

Record Number 19359



Drinking Fountains - Exterior : Drinking Fountain

Drinking Fountain Next To Baseball Field #2 West Duggout

Drinking Fountain : Spout Distance to Front

Finding

The distance from the front edge of the unit (including bumpers) to the spout location, is greater than the allowed maximum distance.

On-Site Finding 10.00 inches

Recommendation

Make sure that the distance from the front of the fountain to the flow of the water is not greater than the allowed maximum distance.

Recommendation Up to 6.00 inches

Costing Info (Estimated)

Install new high/low fountain \$2,500

Code Reference ADA 211, 602, 602.5,CA 11B-602.5

Record Number 19364



Demuth Park

Drinking Fountains - Exterior : Drinking Fountains

Drinking Fountain Next To Baseball Field #2 West Duggout

Drinking Fountains : Drinking Fountain

Finding

The drinking fountain is not on accessible route.

On-Site Finding None Found

Recommendation

Make sure the drinking fountain is on an accessible route.

Recommendation See Recommendation

Costing Info (Estimated)

\$1,840

Code Reference ADA 305, 306, 211, 602, 402.1, 602.1

Record Number 19362



Drinking Fountains - Exterior : Drinking Fountain

Drinking Fountain Next To Baseball Field #4 East Duggout

Drinking Fountain : Toe Clearance

Finding

The toe clearance is less than required.

On-Site Finding 0.00 inches

Recommendation

Provide a fountain with the required knee and toe clearances.

Recommendation At least 9.00 inches

Costing Info (Estimated)

Install new high/low fountain \$2,500

Code Reference ADA 305, 306, 211, 602, 306.2, 602.2, CA 11B-602.2, CA 11B-305

Record Number 19405



Demuth Park

Drinking Fountains - Exterior : Drinking Fountain

Drinking Fountain Next To Baseball Field #4 East Duggout

Drinking Fountain : Knee Clearance

Finding

There is less than the required minimum knee clearance height.

On-Site Finding 0.00 inches

Recommendation

Provide a fountain with the required knee and toe clearances.

Recommendation At least 27.00 inches

Costing Info (Estimated)

Install new high/low fountain \$2,500

Code Reference ADA 305, 306, 211, 602, 306.3, 602.2,CA 11B-602.2,CA 11B-305

Record Number 19407



Drinking Fountains - Exterior : Drinking Fountain

Drinking Fountain Next To Baseball Field #4 East Duggout

Drinking Fountain : Non-Accessible Controls

Finding

The faucet controls require tight grasping or pinching of the wrist to operate.

On-Site Finding Not Accessible

Recommendation

Provide fountain controls with controls that do not require tight grasping or pinching of the wrist to operate.

Recommendation See Recommendation

Costing Info (Estimated)

Replace knob faucets with paddle faucets \$392

Code Reference ADA 309, 205, 211, 602, 309.4, 602.3,CA 11B-309.4,CA 11B-602.3

Record Number 19404



Demuth Park

Drinking Fountains - Exterior : Drinking Fountain

Drinking Fountain Next To Baseball Field #4 East Duggout

Drinking Fountain : Fountain Type

Finding

The provided drinking fountain is not a Hi-Low fountain.

On-Site Finding Fountain Not Compliant

Recommendation

Replace the drinking fountain with a compliant Hi-Low fountain.

Recommendation See Recommendation

Costing Info (Estimated)

Install new high/low fountain \$2,500

Code Reference ADA 305, 602, 211.2,CA
11B-211.2,CA 11B-602

Record Number 19403



Drinking Fountains - Exterior : Drinking Fountains

Drinking Fountain Next To Baseball Field #4 East Duggout

Drinking Fountains : Drinking Fountain

Finding

The drinking fountain is not on accessible route.

On-Site Finding None Found

Recommendation

Make sure the drinking fountain is on an accessible route.

Recommendation See Recommendation

Costing Info (Estimated)

\$1,840

Code Reference ADA 305, 306, 211, 602, 402.1,
602.1

Record Number 19406



Demuth Park

Drinking Fountains - Exterior : Drinking Fountains

Drinking Fountain Next To Baseball Field #4 North Duggout

Drinking Fountains : Drinking Fountain

Finding

The drinking fountain is not on accessible route.

On-Site Finding None Found

Recommendation

Make sure the drinking fountain is on an accessible route.

Recommendation See Recommendation

Costing Info (Estimated)

\$1,840

Code Reference ADA 305, 306, 211, 602, 402.1, 602.1

Record Number 19344



Drinking Fountains - Exterior : Drinking Fountain

Drinking Fountain Next To Baseball Field #4 North Duggout

Drinking Fountain : Spout Distance to Front

Finding

The distance from the front edge of the unit (including bumpers) to the spout location, is greater than the allowed maximum distance.

On-Site Finding 9.00 inches

Recommendation

Make sure that the distance from the front of the fountain to the flow of the water is not greater than the allowed maximum distance.

Recommendation Up to 6.00 inches

Costing Info (Estimated)

Install new high/low fountain \$2,500

Code Reference ADA 211, 602, 602.5, CA 11B-602.5

Record Number 19346



Demuth Park

Drinking Fountains - Exterior : Drinking Fountain

Drinking Fountain Next To Baseball Field #4 North Duggout

Drinking Fountain : Fountain Type

Finding

The provided drinking fountain is not a Hi-Low fountain.

On-Site Finding Fountain Not Compliant

Recommendation

Replace the drinking fountain with a compliant Hi-Low fountain.

Recommendation See Recommendation

Costing Info (Estimated)

Install new high/low fountain \$2,500

Code Reference ADA 305, 602, 211.2,CA
11B-211.2,CA 11B-602

Record Number 19341



Drinking Fountains - Exterior : Drinking Fountain

Drinking Fountain Next To Baseball Field #4 North Duggout

Drinking Fountain : Non-Accessible Controls

Finding

The faucet controls require tight grasping or pinching of the wrist to operate.

On-Site Finding Not Accessible

Recommendation

Provide fountain controls with controls that do not require tight grasping or pinching of the wrist to operate.

Recommendation See Recommendation

Costing Info (Estimated)

Replace knob faucets with paddle faucets \$392

Code Reference ADA 309, 205, 211, 602, 309.4,
602.3,CA 11B-309.4,CA 11B-602.3

Record Number 19342



Demuth Park

Drinking Fountains - Exterior : Drinking Fountain

Drinking Fountain Next To Baseball Field #4 North Duggout

Drinking Fountain : Knee Clearance

Finding

There is less than the required minimum knee clearance height.

On-Site Finding 0.00 inches

Recommendation

Provide a fountain with the required knee and toe clearances.

Recommendation At least 27.00 inches

Costing Info (Estimated)

Install new high/low fountain \$2,500

Code Reference ADA 305, 306, 211, 602, 306.3, 602.2, CA 11B-602.2, CA 11B-305

Record Number 19345



Drinking Fountains - Exterior : Drinking Fountain

Drinking Fountain Next To Baseball Field #4 North Duggout

Drinking Fountain : Toe Clearance

Finding

The toe clearance is less than required.

On-Site Finding 0.00 inches

Recommendation

Provide a fountain with the required knee and toe clearances.

Recommendation At least 9.00 inches

Costing Info (Estimated)

Install new high/low fountain \$2,500

Code Reference ADA 305, 306, 211, 602, 306.2, 602.2, CA 11B-602.2, CA 11B-305

Record Number 19343



Demuth Park

Drinking Fountains - Exterior : Drinking Fountain

Drinking Fountain Next To Baseball Field #6 North Duggout

Drinking Fountain : Toe Clearance

Finding

The toe clearance is less than required.

On-Site Finding 0.00 inches

Recommendation

Provide a fountain with the required knee and toe clearances.

Recommendation At least 9.00 inches

Costing Info (Estimated)

Install new high/low fountain \$2,500

Code Reference ADA 305, 306, 211, 602, 306.2, 602.2, CA 11B-602.2, CA 11B-305

Record Number 19349



Drinking Fountains - Exterior : Drinking Fountain

Drinking Fountain Next To Baseball Field #6 North Duggout

Drinking Fountain : Knee Clearance

Finding

There is less than the required minimum knee clearance height.

On-Site Finding 0.00 inches

Recommendation

Provide a fountain with the required knee and toe clearances.

Recommendation At least 27.00 inches

Costing Info (Estimated)

Install new high/low fountain \$2,500

Code Reference ADA 305, 306, 211, 602, 306.3, 602.2, CA 11B-602.2, CA 11B-305

Record Number 19351



Demuth Park

Drinking Fountains - Exterior : Drinking Fountain

Drinking Fountain Next To Baseball Field #6 North Duggout

Drinking Fountain : Non-Accessible Controls

Finding

The faucet controls require tight grasping or pinching of the wrist to operate.

On-Site Finding Not Accessible

Recommendation

Provide fountain controls with controls that do not require tight grasping or pinching of the wrist to operate.

Recommendation See Recommendation

Costing Info (Estimated)

Replace knob faucets with paddle faucets \$392

Code Reference ADA 309, 205, 211, 602, 309.4, 602.3, CA 11B-309.4, CA 11B-602.3

Record Number 19348



Drinking Fountains - Exterior : Drinking Fountain

Drinking Fountain Next To Baseball Field #6 North Duggout

Drinking Fountain : Fountain Type

Finding

The provided drinking fountain is not a Hi-Low fountain.

On-Site Finding Fountain Not Compliant

Recommendation

Replace the drinking fountain with a compliant Hi-Low fountain.

Recommendation See Recommendation

Costing Info (Estimated)

Install new high/low fountain \$2,500

Code Reference ADA 305, 602, 211.2, CA 11B-211.2, CA 11B-602

Record Number 19347



Demuth Park

Drinking Fountains - Exterior : Drinking Fountain

Drinking Fountain Next To Baseball Field #6 North Duggout

Drinking Fountain : Spout Distance to Front

Finding

The distance from the front edge of the unit (including bumpers) to the spout location, is greater than the allowed maximum distance.

On-Site Finding 9.00 inches

Recommendation

Make sure that the distance from the front of the fountain to the flow of the water is not greater than the allowed maximum distance.

Recommendation Up to 6.00 inches

Costing Info (Estimated)

Install new high/low fountain \$2,500

Code Reference ADA 211, 602, 602.5, CA 11B-602.5

Record Number 19352



Drinking Fountains - Exterior : Drinking Fountains

Drinking Fountain Next To Baseball Field #6 North Duggout

Drinking Fountains : Drinking Fountain

Finding

The drinking fountain is not on accessible route.

On-Site Finding None Found

Recommendation

Make sure the drinking fountain is on an accessible route.

Recommendation See Recommendation

Costing Info (Estimated)

\$1,840

Code Reference ADA 305, 306, 211, 602, 402.1, 602.1

Record Number 19350



Demuth Park

Drinking Fountains - Exterior : Drinking Fountain

Drinking Fountain Next To Baseball Field #6 West Duggout

Drinking Fountain : Toe Clearance

Finding

The toe clearance is less than required.

On-Site Finding 0.00 inches

Recommendation

Provide a fountain with the required knee and toe clearances.

Recommendation At least 9.00 inches

Costing Info (Estimated)

Install new high/low fountain \$2,500

Code Reference ADA 305, 306, 211, 602, 306.2, 602.2, CA 11B-602.2, CA 11B-305

Record Number 19392



Drinking Fountains - Exterior : Drinking Fountain

Drinking Fountain Next To Baseball Field #6 West Duggout

Drinking Fountain : Knee Clearance

Finding

There is less than the required minimum knee clearance height.

On-Site Finding 0.00 inches

Recommendation

Provide a fountain with the required knee and toe clearances.

Recommendation At least 27.00 inches

Costing Info (Estimated)

Install new high/low fountain \$2,500

Code Reference ADA 305, 306, 211, 602, 306.3, 602.2, CA 11B-602.2, CA 11B-305

Record Number 19394



Demuth Park

Drinking Fountains - Exterior : Drinking Fountain

Drinking Fountain Next To Baseball Field #6 West Duggout

Drinking Fountain : Non-Accessible Controls

Finding

The faucet controls require tight grasping or pinching of the wrist to operate.

On-Site Finding Not Accessible

Recommendation

Provide fountain controls with controls that do not require tight grasping or pinching of the wrist to operate.

Recommendation See Recommendation

Costing Info (Estimated)

Replace knob faucets with paddle faucets \$392

Code Reference ADA 309, 205, 211, 602, 309.4, 602.3, CA 11B-309.4, CA 11B-602.3

Record Number 19391



Drinking Fountains - Exterior : Drinking Fountain

Drinking Fountain Next To Baseball Field #6 West Duggout

Drinking Fountain : Fountain Type

Finding

The provided drinking fountain is not a Hi-Low fountain.

On-Site Finding Fountain Not Compliant

Recommendation

Replace the drinking fountain with a compliant Hi-Low fountain.

Recommendation See Recommendation

Costing Info (Estimated)

Install new high/low fountain \$2,500

Code Reference ADA 305, 602, 211.2, CA 11B-211.2, CA 11B-602

Record Number 19390



Demuth Park

Drinking Fountains - Exterior : Drinking Fountain

Drinking Fountain Next To Baseball Field #6 West Duggout

Drinking Fountain : Spout Distance to Front

Finding

The distance from the front edge of the unit (including bumpers) to the spout location, is greater than the allowed maximum distance.

On-Site Finding 8.00 inches

Recommendation

Make sure that the distance from the front of the fountain to the flow of the water is not greater than the allowed maximum distance.

Recommendation Up to 6.00 inches

Costing Info (Estimated)

Install new high/low fountain \$2,500

Code Reference ADA 211, 602, 602.5,CA 11B-602.5

Record Number 19395



Drinking Fountains - Exterior : Drinking Fountain

Drinking Fountain Next To Baseball Field #6 West Duggout

Drinking Fountain : Stream Trajectory

Finding

The water flow trajectory is not parallel to the front of the drinking fountain.

On-Site Finding Not Compliant

Recommendation

Provide a water flow trajectory that is parallel to the front of the drinking fountain.

Recommendation See Recommendation

Costing Info (Estimated)

\$2,875

Code Reference ADA 602.6,CA 11B-602.6

Record Number 19396



Demuth Park

Drinking Fountains - Exterior : Drinking Fountains

Drinking Fountain Next To Baseball Field #6 West Duggout

Drinking Fountains : Drinking Fountain

Finding

The drinking fountain is not on accessible route.

On-Site Finding None Found

Recommendation

Make sure the drinking fountain is on an accessible route.

Recommendation See Recommendation

Costing Info (Estimated)

\$1,840

Code Reference ADA 305, 306, 211, 602, 402.1, 602.1

Record Number 19393



Drinking Fountains - Exterior : Drinking Fountain

Drinking Fountain Next To Tennis Courts

Drinking Fountain : Fountain Type

Finding

The provided drinking fountain is not a Hi-Low fountain.

On-Site Finding Fountain Not Compliant

Recommendation

Replace the drinking fountain with a compliant Hi-Low fountain.

Recommendation See Recommendation

Costing Info (Estimated)

Install new high/low fountain \$2,500

Code Reference ADA 305, 602, 211.2,CA 11B-211.2,CA 11B-602

Record Number 19409



Demuth Park

Drinking Fountains - Exterior : Drinking Fountains

Drinking Fountain Next To Tennis Courts

Drinking Fountains : Protruding Object

Finding

The drinking fountain is a protruding object.

On-Site Finding None

Recommendation

Make sure that the fountain is not a protruding object.

Recommendation See Recommendation

Costing Info (Estimated)

Modify fountain \$550

Code Reference ADA 305, 306, 211, 602, 307.2,CA
11B-602,CA 11B-307.2

Record Number 19410



Assembly Areas - Exterior : Assembly Area

Baseball Field #5

Assembly Area : Less Than Minimum Required
Accessible Seats

Finding

There are not enough accessible seats at the location with respect to the total number of seats available.

On-Site Finding None Found

Recommendation

Provide compliant accessible seating at the location.

Recommendation At least 2.00 seats

Costing Info (Estimated)

Requires re-design \$600

Code Reference ADA 221.2, 802.1,CA 11B-221.2,CA
11B-802.1

Record Number 16907



Demuth Park

Assembly Areas - Exterior : Assembly Area

Baseball Field #7

Assembly Area : Less Than Minimum Required Accessible Seats

Finding

There are not enough accessible seats at the location with respect to the total number of seats available.

On-Site Finding None Found

Recommendation

Provide compliant accessible seating at the location.

Recommendation At least 4.00 seats

Costing Info (Estimated)

Requires re-design \$600

Code Reference ADA 221.2, 802.1, CA 11B-221.2, CA 11B-802.1

Record Number 16896



Assembly Areas - Exterior : Assembly Area

Baseball Field #8

Assembly Area : Less Than Minimum Required Accessible Seats

Finding

There are not enough accessible seats at the location with respect to the total number of seats available.

On-Site Finding None Found

Recommendation

Provide compliant accessible seating at the location.

Recommendation At least 4.00 seats

Costing Info (Estimated)

Requires re-design \$600

Code Reference ADA 221.2, 802.1, CA 11B-221.2, CA 11B-802.1

Record Number 16897



Demuth Park

Play Area - Exterior : Play Area

Play Area (Ages 5-12)

Climbing Chains - Sand

Play Area : Surface Type

Finding

The surface beneath the play area is non-accessible to individuals with mobility impairments.

On-Site Finding Not Accessible

Recommendation

The play area should be made an accessible play area for the facility. Provide a maneuvering space with an accessible resilient surface beneath the play components and adjacent to the play components where technically feasible.

Recommendation See Recommendation

Costing Info (Estimated)

Provide compliant and resilient surface \$500

Code Reference ADA 1008, 240, 1008.2, 1008.2.6

Record Number 19504



Demuth Park

Play Area - Exterior : Play Area

Play Area (Ages 5-12)

Glider - Sand

Play Area : Surface Type

Finding

The surface beneath the play area is non-accessible to individuals with mobility impairments.

On-Site Finding Not Accessible

Recommendation

The play area should be made an accessible play area for the facility. Provide a maneuvering space with an accessible resilient surface beneath the play components and adjacent to the play components where technically feasible.

Recommendation See Recommendation

Costing Info (Estimated)

Provide compliant and resilient surface \$500

Code Reference ADA 1008, 240, 1008.2, 1008.2.6

Record Number 19507



Demuth Park

Play Area - Exterior : Play Area

Play Area (Ages 5-12)

Rock Climb - Sand

Play Area : Surface Type

Finding

The surface beneath the play area is non-accessible to individuals with mobility impairments.

On-Site Finding Not Accessible

Recommendation

The play area should be made an accessible play area for the facility. Provide a maneuvering space with an accessible resilient surface beneath the play components and adjacent to the play components where technically feasible.

Recommendation See Recommendation

Costing Info (Estimated)

Provide compliant and resilient surface \$500

Code Reference ADA 1008, 240, 1008.2, 1008.2.6

Record Number 19509



Demuth Park

Play Area - Exterior : Play Area

Play Area (Ages 5-12)

Swings - Concrete/Solid Surface

Play Area : Surface Type

Finding

The surface beneath the play area is non-accessible to individuals with mobility impairments.

On-Site Finding Not Accessible

Recommendation

The play area should be made an accessible play area for the facility. Provide a maneuvering space with an accessible resilient surface beneath the play components and adjacent to the play components where technically feasible.

Recommendation See Recommendation

Costing Info (Estimated)

Provide compliant and resilient surface \$500

Code Reference ADA 1008, 240, 1008.2, 1008.2.6

Notes : Path of travel to the swings is concrete.

Record Number 19506



Demuth Park

Play Area - Exterior : Play Area

Toddler Play Area (Ages 2-5)

Telephone - Sand

Play Area : Surface Type

Finding

The surface beneath the play area is non-accessible to individuals with mobility impairments.

On-Site Finding Not Accessible

Recommendation

The play area should be made an accessible play area for the facility. Provide a maneuvering space with an accessible resilient surface beneath the play components and adjacent to the play components where technically feasible.

Recommendation See Recommendation

Costing Info (Estimated)

Provide compliant and resilient surface \$500

Code Reference ADA 1008, 240, 1008.2, 1008.2.6

Record Number 19513



Demuth Park

Play Areas - Exterior : Play Area , Ground level Equipment

Play Area (Ages 5-12)

Climbing Chains - Sand

Play Area , Ground level Equipment : Clear Floor Space Surface Not Firm and Stable

Finding

The clear floor space at the ground level equipment is not firm and stable.

On-Site Finding See Above

Recommendation

Provide compliant clear floor space at the ground level equipment.

Recommendation See Recommendation

Costing Info (Estimated)

\$1,840

Code Reference ADA 1008, 305, 305.2, 302.1, 1008.4.2

Record Number 19505



Demuth Park

Play Areas - Exterior : Play Area , Ground level Equipment

Play Area (Ages 5-12)

Glider - Sand

Play Area , Ground level Equipment : Clear Floor Space Surface Not Firm and Stable

Finding

The clear floor space at the ground level equipment is not firm and stable.

On-Site Finding See Above

Recommendation

Provide compliant clear floor space at the ground level equipment.

Recommendation See Recommendation

Costing Info (Estimated)

\$1,840

Code Reference ADA 1008, 305, 305.2, 302.1, 1008.4.2

Record Number 19508



Play Areas - Exterior : Play Area , Ground level Equipment

Play Area (Ages 5-12)

Rock Climb - Sand

Play Area , Ground level Equipment : Clear Floor Space Surface Not Firm and Stable

Finding

The clear floor space at the ground level equipment is not firm and stable.

On-Site Finding See Above

Recommendation

Provide compliant clear floor space at the ground level equipment.

Recommendation See Recommendation

Costing Info (Estimated)

\$1,840

Code Reference ADA 1008, 305, 305.2, 302.1, 1008.4.2

Record Number 19510



Demuth Park

Play Areas - Exterior : Play Area , Equipment

Toddler Play Area (Ages 2-5)

Elevated Equipment - Rubberized Surface

Play Area , Equipment : Steps Tread Depth

Finding

The tread depth of the steps is not compliant.

On-Site Finding 13.75 inches

Recommendation

Provide steps with compliant tread depth.

Recommendation At least 14.00 inches

Costing Info (Estimated)

\$35

Code Reference ADA 1008, 1008.3.2.1

Record Number 19511



Play Areas - Exterior : Play Area , Ground Level Equipment

Toddler Play Area (Ages 2-5)

Tunnel - Rubberized Surface

Play Area , Ground Level Equipment : Clear Floor Space Length

Finding

Clear floor space at the ground level equipment is not compliant.

On-Site Finding 12.00 inches

Recommendation

Provide compliant clear floor space at the ground level equipment.

Recommendation At least 48.00 inches

Costing Info (Estimated)

\$1,840

Code Reference ADA 1008, 305, 305.3, 1008.4.2

Record Number 19512



Demuth Park

Picnic Areas - Exterior : Picnic Tables

Picnic Area Next To Baseball Field #4

Picnic Tables : At least 5% not Accessible

Finding

At least 5% of the provided tables are not accessible.

On-Site Finding None Found

Recommendation

Provide enough compliant Accessible Tables (At least 5% of the total Tables).

Recommendation At least 1.00 tables

Costing Info (Estimated)

Accessible table (each) \$500

Code Reference ADA 309, 305, 205, 306, 308, 902, 228, 226.1

Record Number 16991



Picnic Areas - Exterior : Picnic Tables

Picnic Tables Next To Baseball Fields # 7 And 8

Picnic Tables : At least 5% not Accessible

Finding

At least 5% of the provided tables are not accessible.

On-Site Finding None Found

Recommendation

Provide enough compliant Accessible Tables (At least 5% of the total Tables).

Recommendation At least 1.00 tables

Costing Info (Estimated)

Accessible table (each) \$500

Code Reference ADA 309, 305, 205, 306, 308, 902, 228, 226.1

Record Number 16944



Demuth Park

Picnic Areas - Exterior : Picnic Tables

Picnic Tables Next To Baseball Fields # 7 And 8

Picnic Tables : Not on Accessible Route

Finding

There is no accessible route to the picnic tables.

On-Site Finding None Found

Recommendation

Provide an accessible route to the picnic tables.

Recommendation See Recommendation

Costing Info (Estimated)

Provide compliant route \$1,440

Code Reference ADA 402, 403, 309, 205, 308, 226, 228,CA 11B-246.5,CA 11B-902

Record Number 16943



Benches - Exterior : Bench

Benches At Play Area

Bench : Clear Floor Space

Finding

No clear floor space provided at the bench.

On-Site Finding Not Found

Recommendation

Provide compliant clear floor space for the bench at one end.

Recommendation See Recommendation

Costing Info (Estimated)

\$1,840

Code Reference ADA 305, 903.2,CA 11B-903.2,CA 11B-305

Record Number 16895



Demuth Park

Benches - Exterior : Bench

Benches At Toddler Play Area

Bench : On Accessible Route

Finding

The bench is not on an accessible route.

On-Site Finding Not Accessible

Recommendation

Provide a compliant accessible route to the benches.

Recommendation See Recommendation

Costing Info (Estimated)

Provide compliant route \$1,840

Code Reference ADA 309, 903, 305, 205, 308, 228

Record Number 16927



Demuth Park



Demuth Park

4365 Mesquite Avenue
Palm Springs, CA 92264

Date of Inspection
9/28/2012

***Estimated Facility Total: \$475,751**

*Estimated facility total is for estimating purposes only and does not represent total construction, repair totals or design fees.

Prepared By

Disability Access Consultants

(800) 743-7067

Prepared Using

