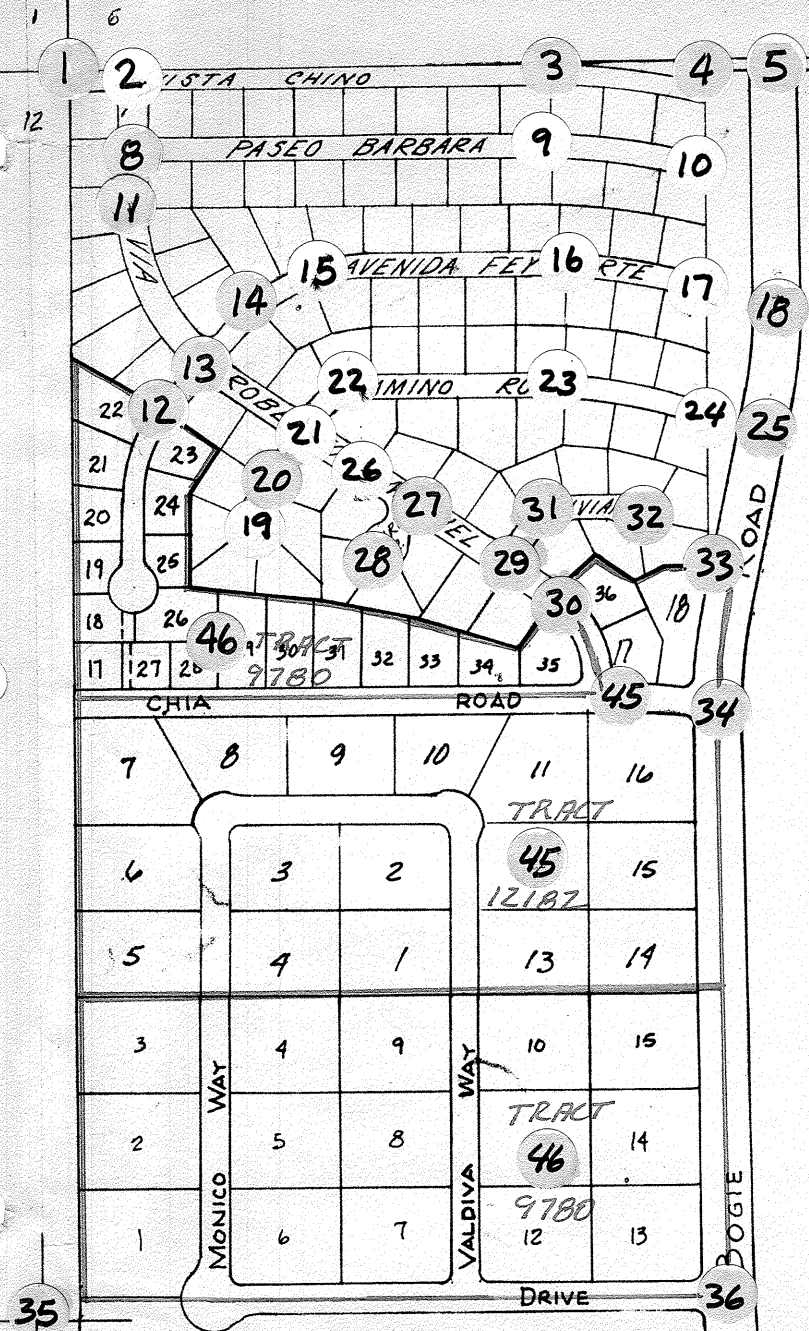
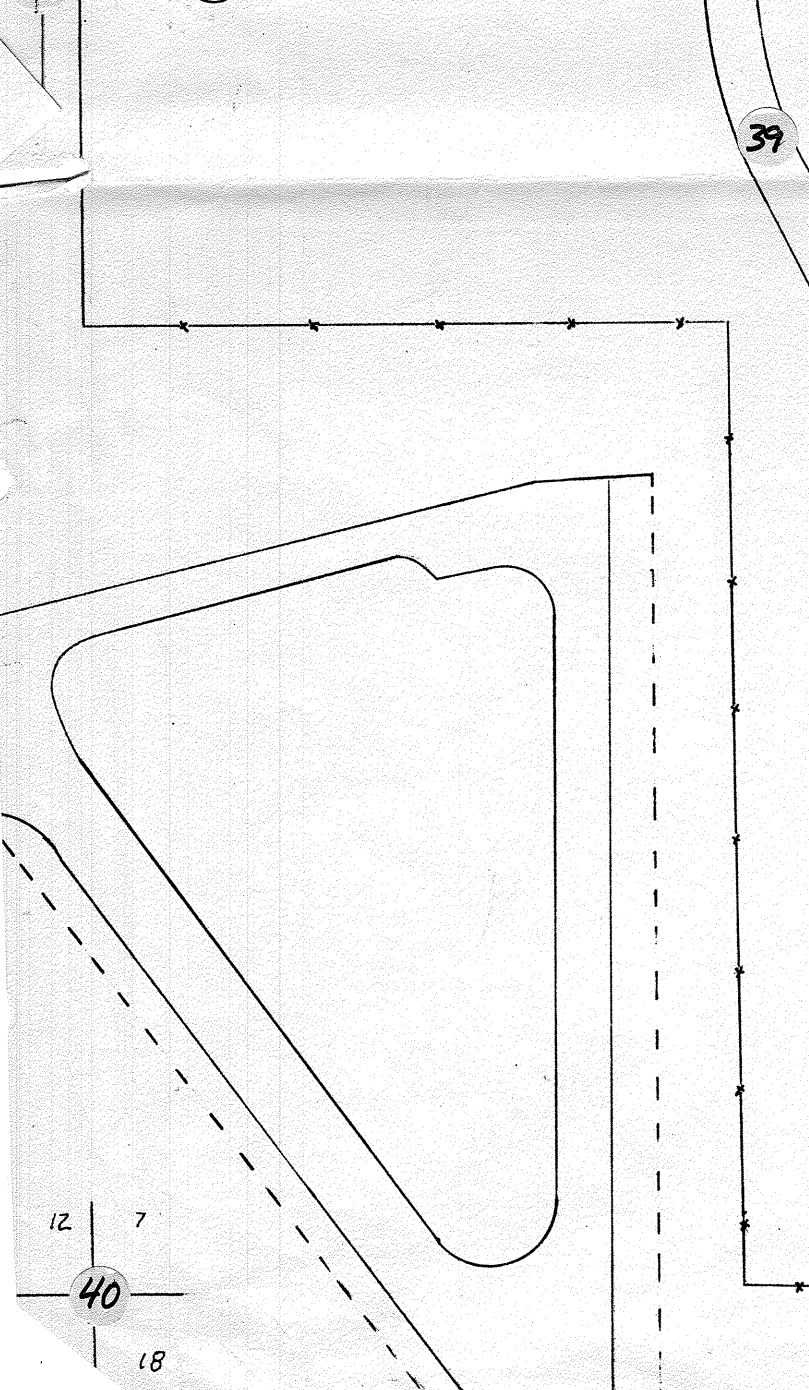


SEC. 7, T.4S.,R.5E.



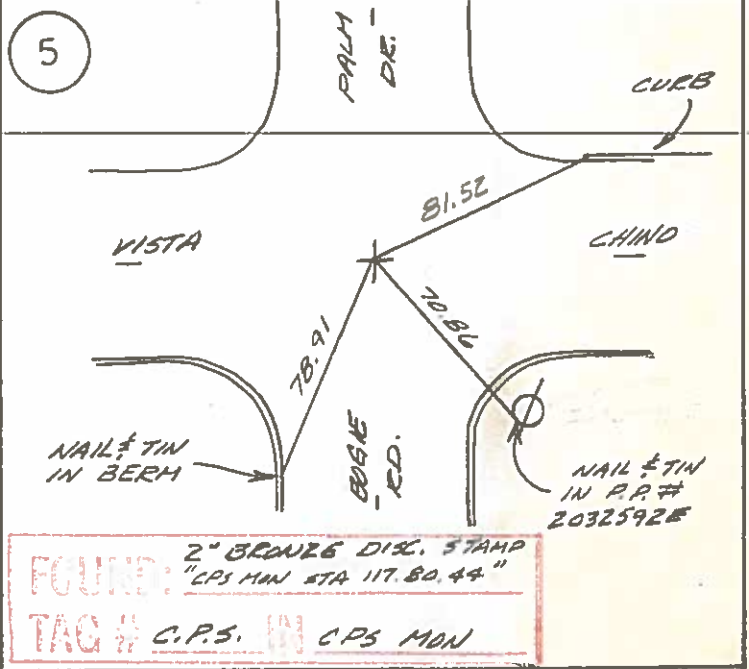
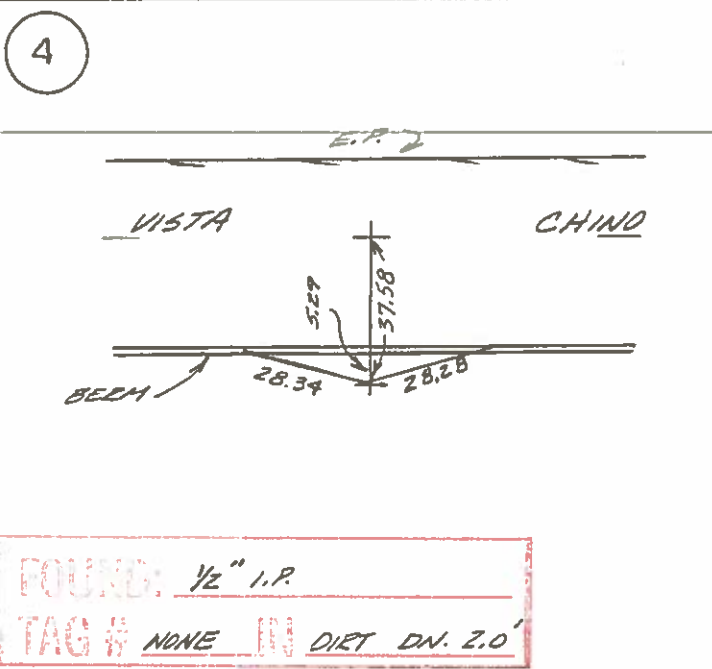
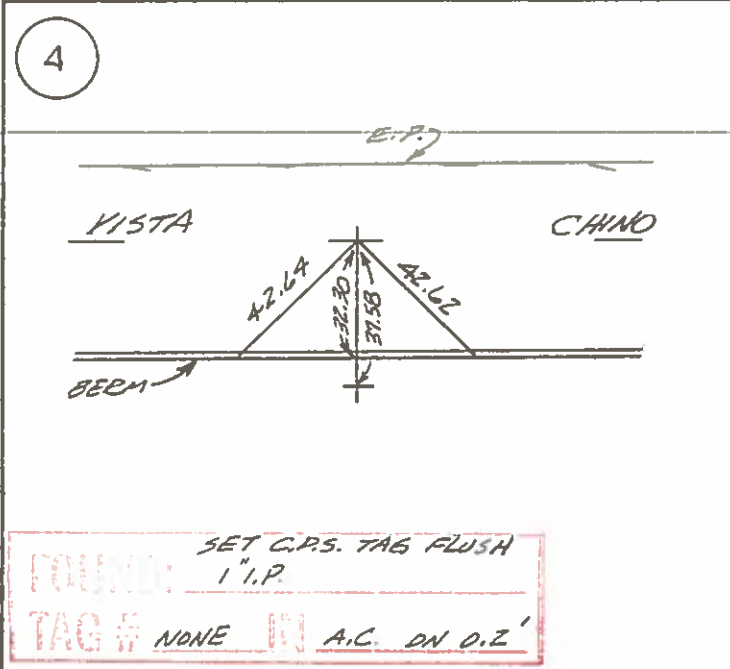
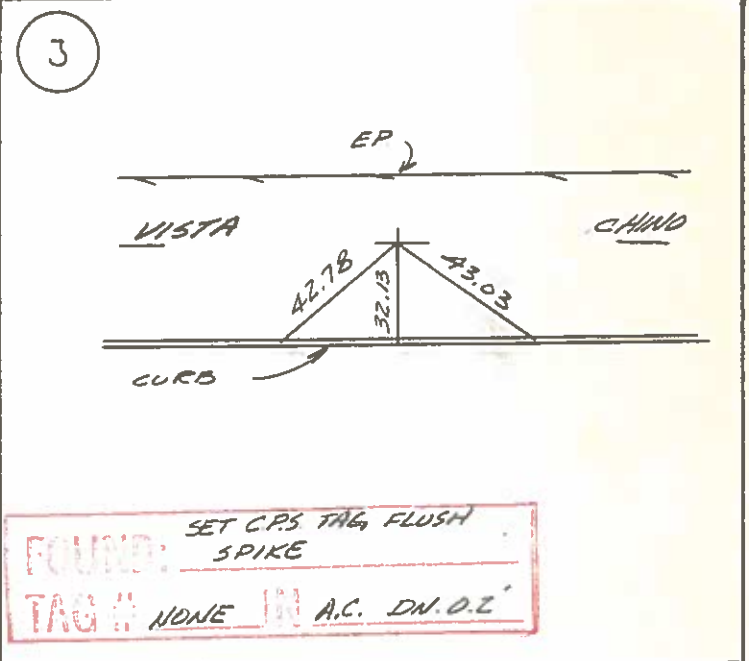
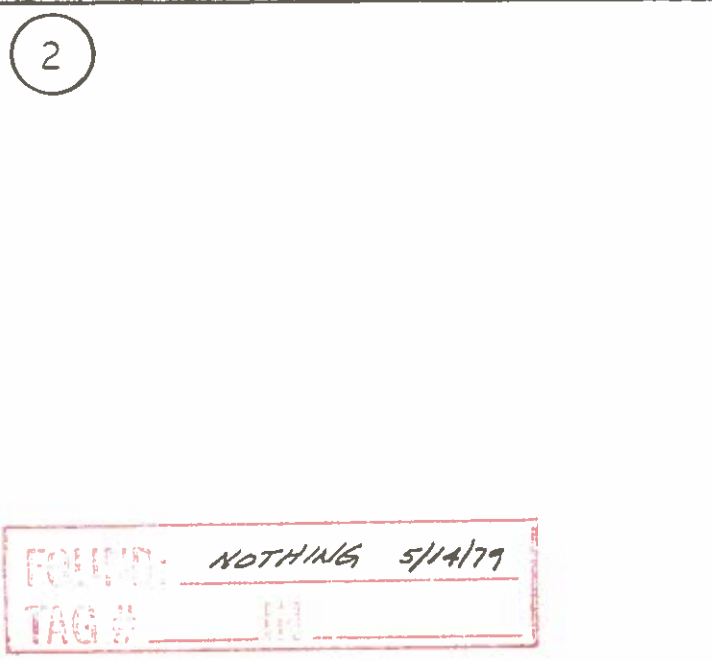
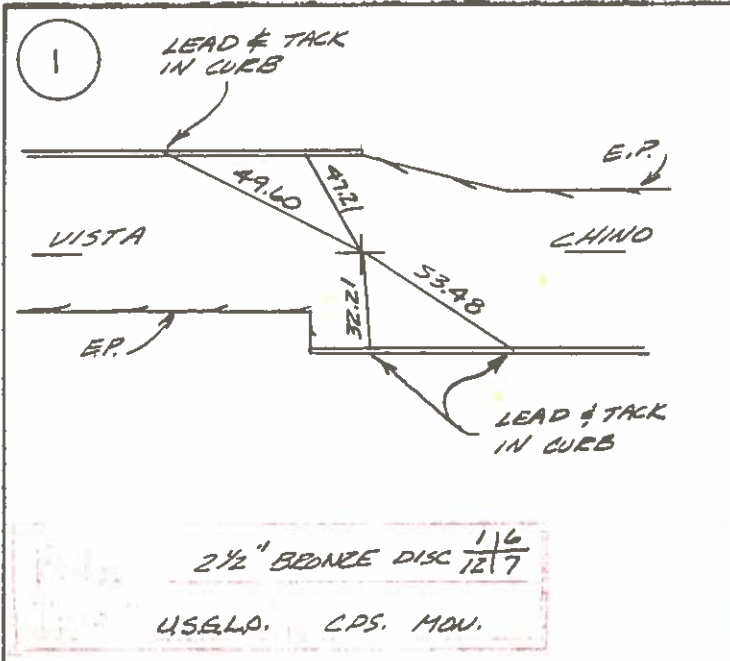
WHITEWATER

RIVER

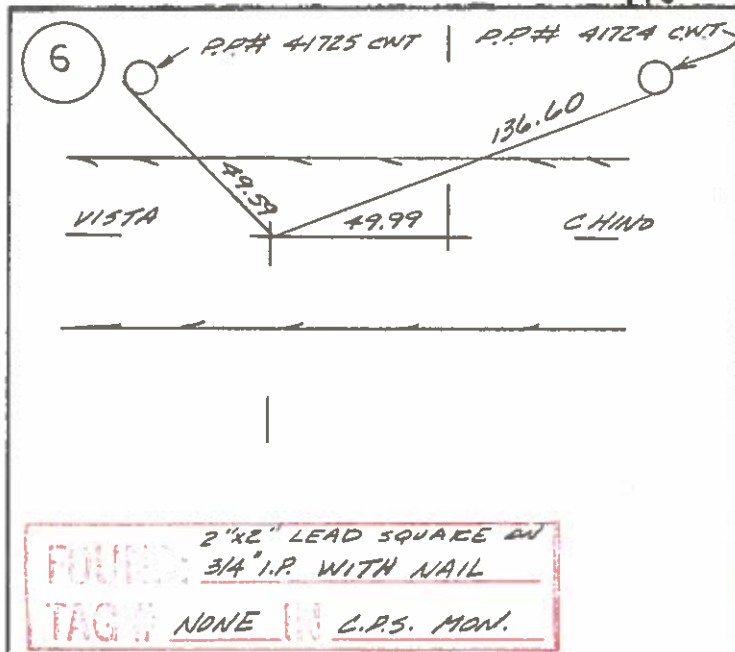


41  
42 43

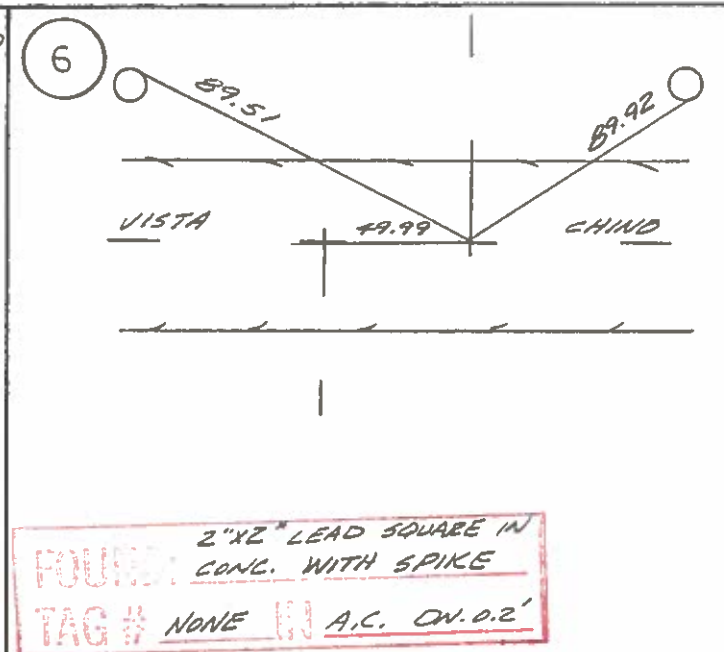
7 8  
44  
18 17



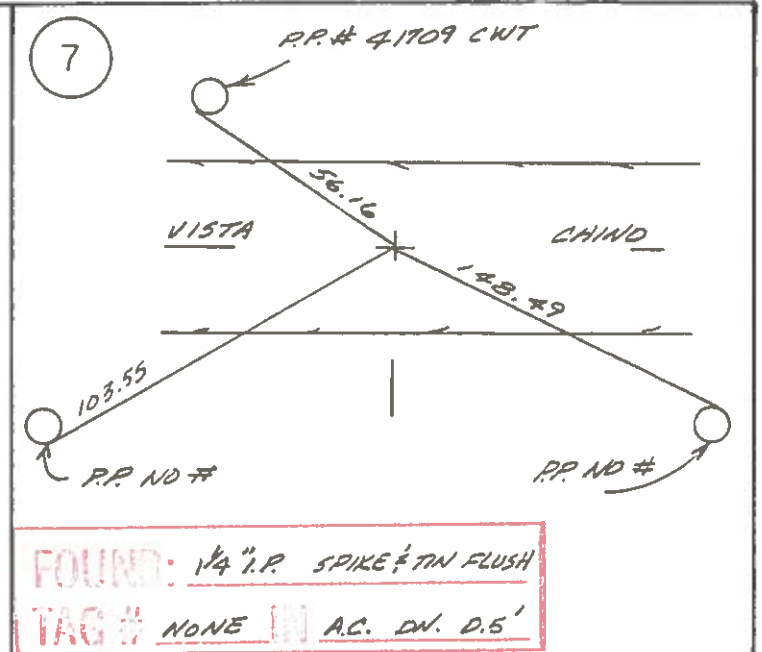
SURVEY MONUMENT TIES



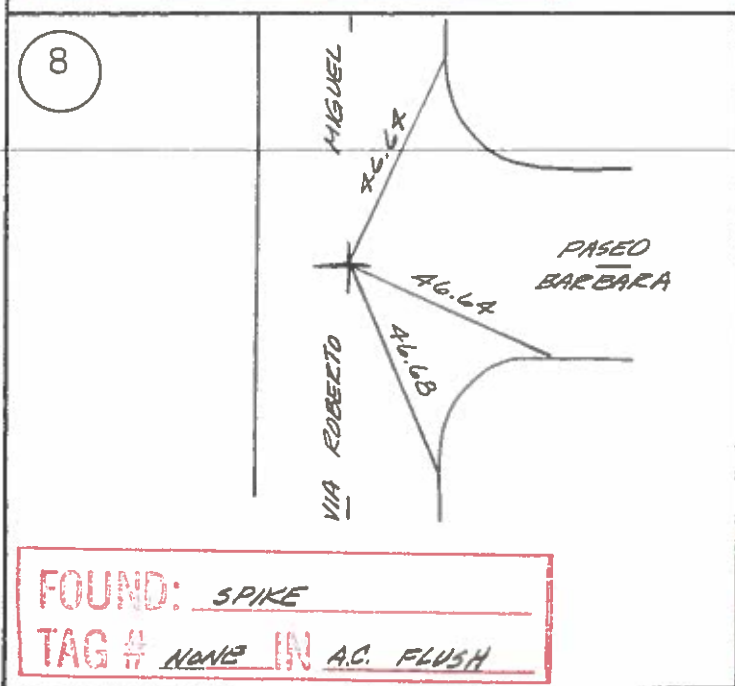
FOUND: 2"X2" LEAD SQUARE IN  
3/4" I.P. WITH NAIL  
TAG # NONE IN C.P.S. MON.



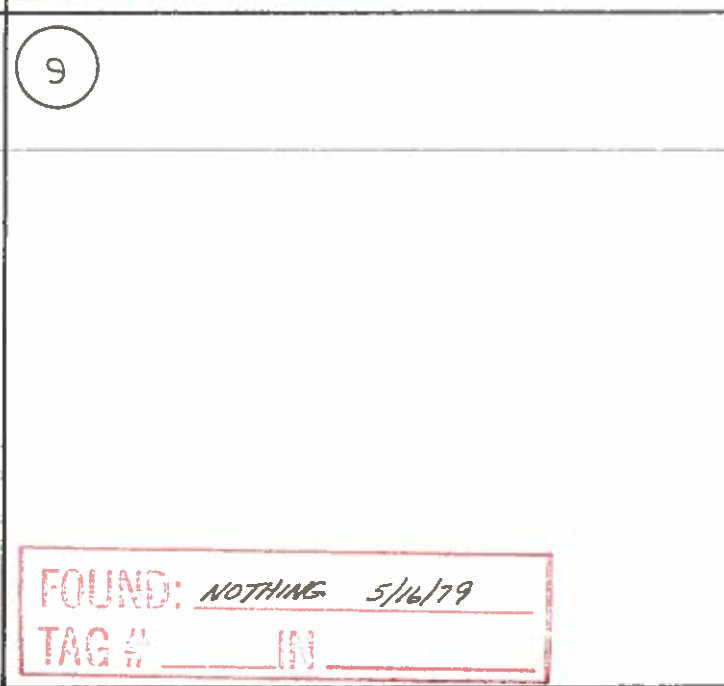
FOUND: 2"X2" LEAD SQUARE IN  
CONC. WITH SPIKE  
TAG # NONE IN A.C. DN. 0.2'



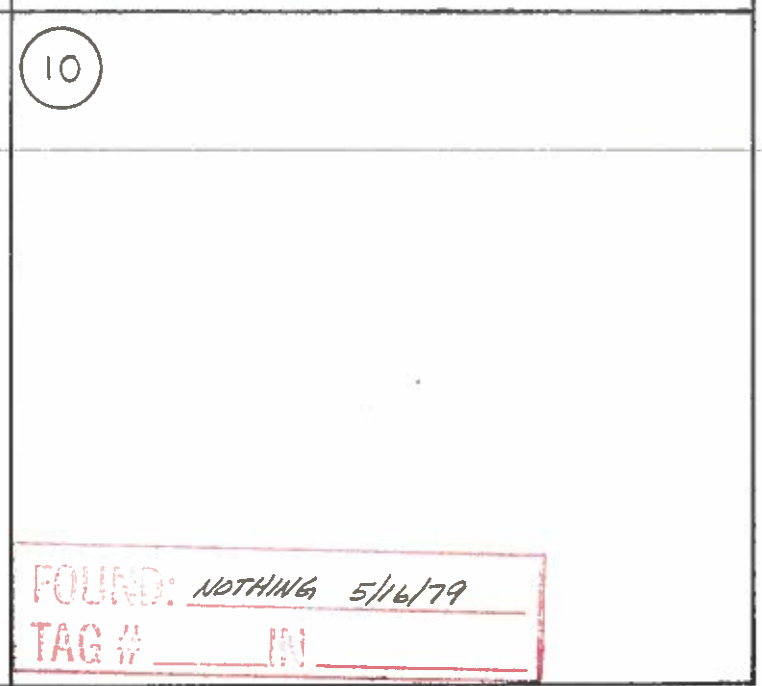
FOUND: 1/4" I.P. SPIKE 1/2" DN FLUSH  
TAG # NONE IN A.C. DN. 0.5'



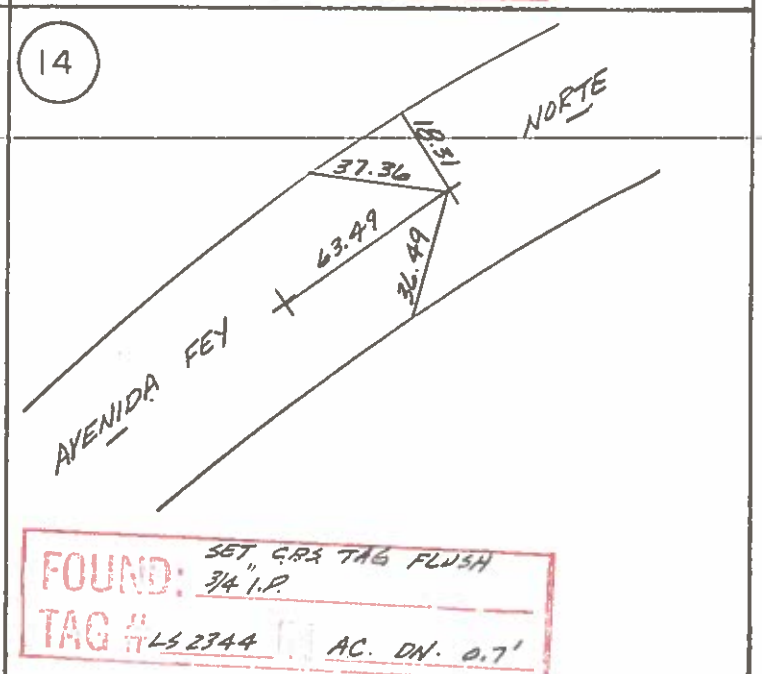
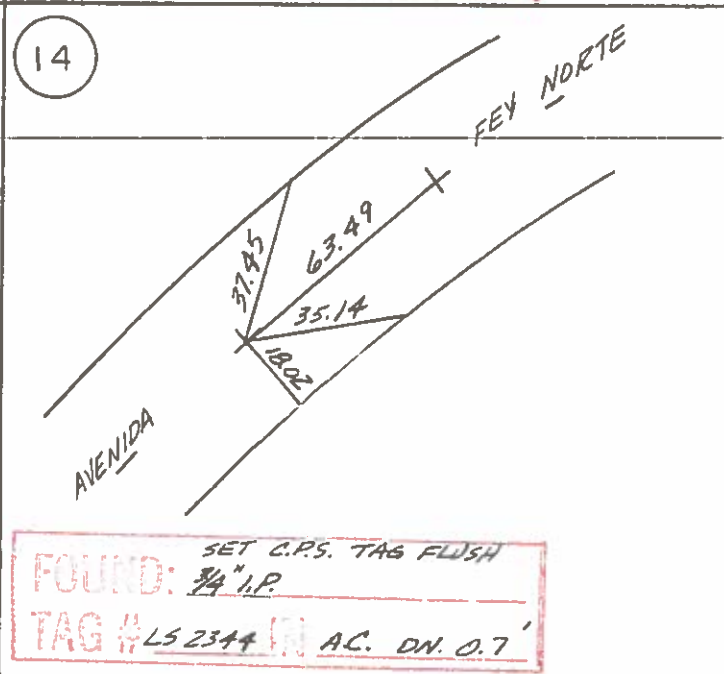
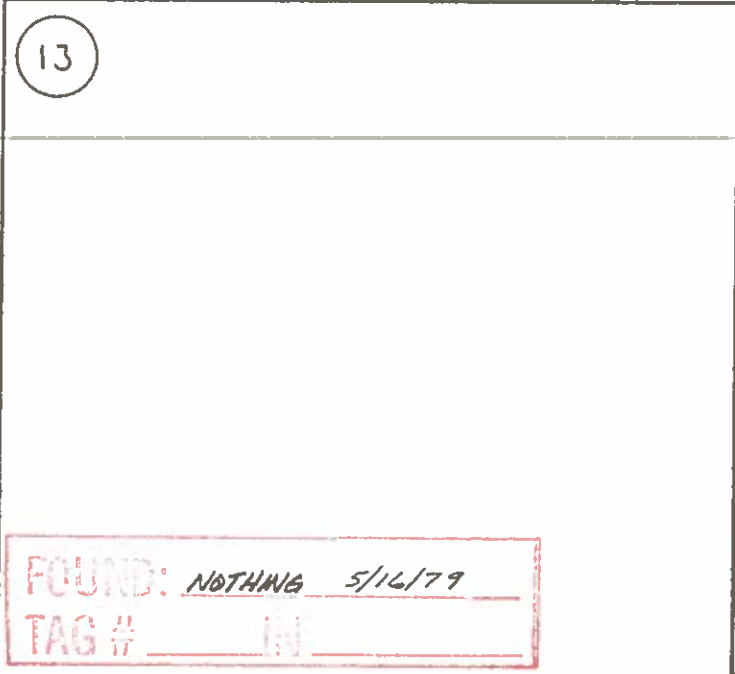
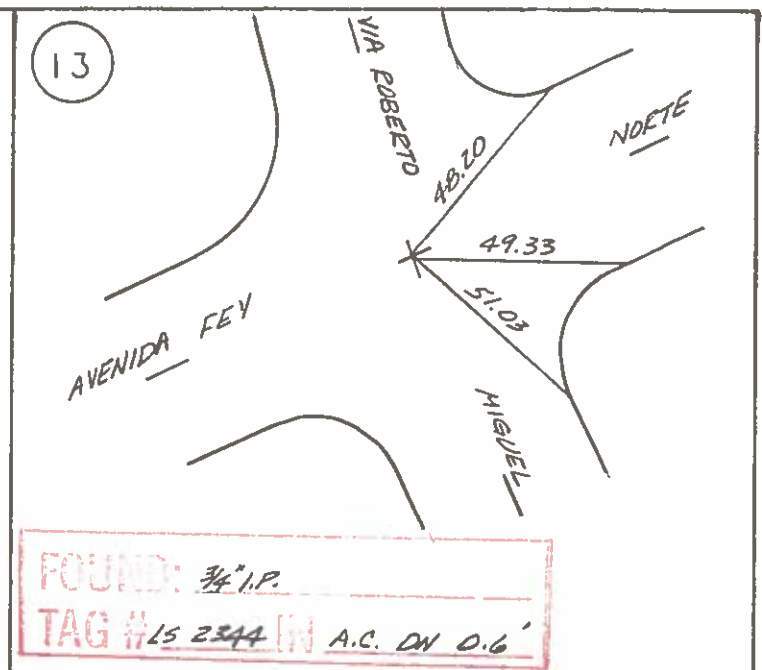
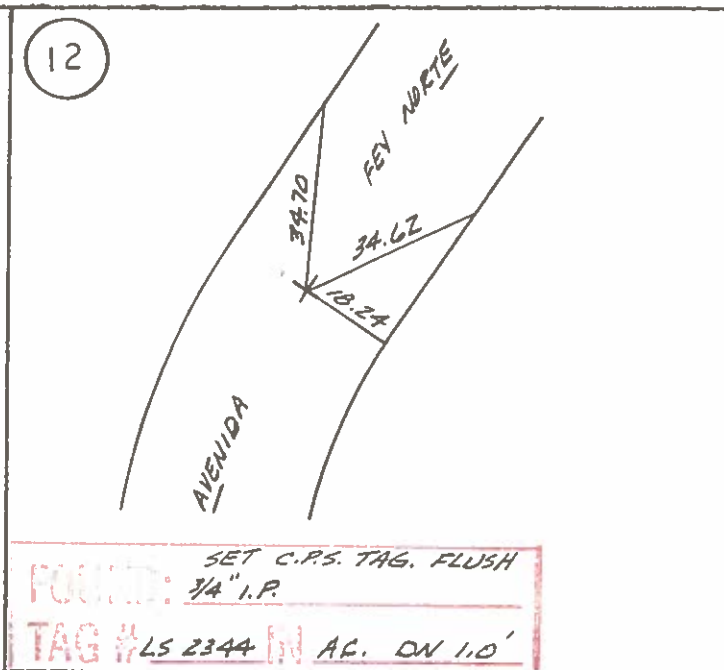
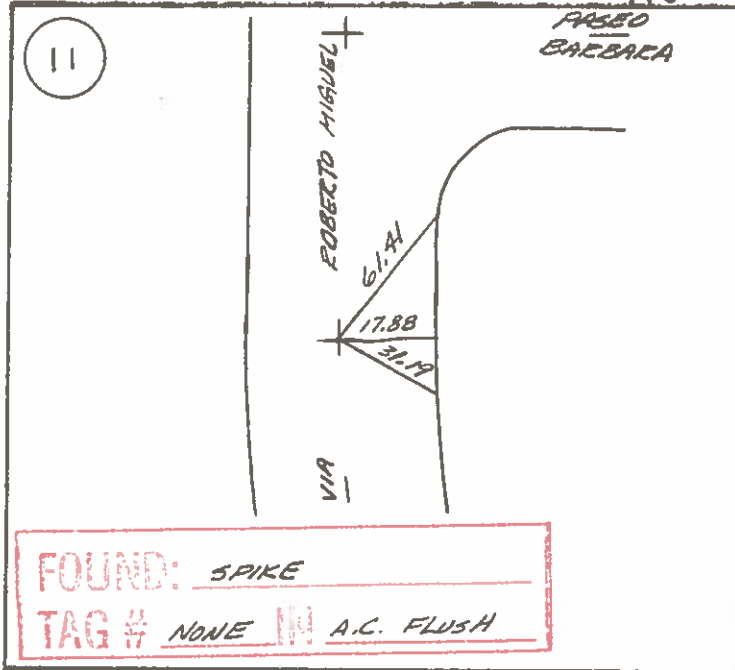
FOUND: SPIKE  
TAG # NONE IN A.C. FLUSH



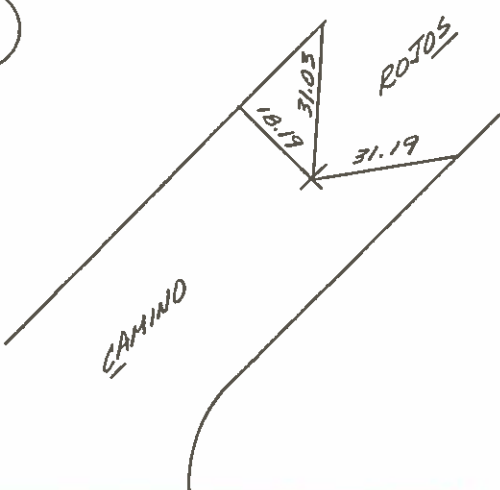
FOUND: NOTHING 5/16/79  
TAG # \_\_\_\_\_ IN \_\_\_\_\_



FOUND: NOTHING 5/16/79  
TAG # \_\_\_\_\_ IN \_\_\_\_\_



<p>15</p> <p>FOUND: <u>NOTHING</u> <u>5/16/79</u> TAG # <u>    </u> IN <u>    </u></p>	<p>16</p> <p>FOUND: <u>NOTHING</u> <u>5/16/79</u> TAG # <u>    </u> IN <u>    </u></p>	<p>17</p> <p>FOUND: <u>NOTHING</u> <u>5/16/79</u> TAG # <u>    </u> IN <u>    </u></p>
<p>18</p> <p>FOUND: <u>2" BRONZE DISC STAMPED</u> <u>C.P.S. MON. STA. 112.59.88"</u> TAG # <u>C.P.S.</u> IN <u>C.P.S. MON</u></p>	<p>19</p> <p>FOUND: <u>NOTHING</u> <u>5/16/79</u> TAG # <u>    </u> IN <u>    </u></p>	<p>19</p> <p>FOUND: <u>NOTHING</u> <u>5/16/79</u> TAG # <u>    </u> IN <u>    </u></p>

<p>(20)</p>  <p>FOUND: SET 1 SWING TIES SPIKE TAG # NONE IN AC. FLUSH</p>	<p>(21)</p> <p>FOUND: NOTHING 5/16/79 TAG # _____ IN _____</p>	<p>(22)</p> <p>FOUND: NOTHING 5/16/79 TAG # _____ IN _____</p>
<p>(22)</p> <p>FOUND: NOTHING 5/16/79 TAG # _____ IN _____</p>	<p>(23)</p> <p>FOUND: NOTHING 5/16/79 TAG # _____ IN _____</p>	<p>(24)</p> <p>FOUND: NOTHING 5/16/79 TAG # _____ IN _____</p>

25 ALL TIES NAILÉ  
TIN 1' FROM E.P.

RD.  
32.30  
33.09  
32.42  
33.54  
E.P.  
ROBIE  
E.P.

FOUND: 2" BRASS DISC STAMPED  
"C.P.S. MON. STA. 110.51.75"  
TAG # C.P.S. IN C.P.S. MON

26

FOUND: PK, LOST IN DIGGING  
TAG # \_\_\_\_\_ IN \_\_\_\_\_

27 TIES COURTESY  
WEBB ENG.  
ALL TIE POINTS  
LS 2344 TAG ON  
CURB

VIA ROBERTO  
37.51  
20.18  
37.38  
GARY CIRCLE  
MIGUEL

FOUND: NOTHING  
TAG # \_\_\_\_\_ IN \_\_\_\_\_

28 TIES COURTESY  
WEBB ENG.  
ALL TIE POINTS  
LS 2344 TAG  
ON CURB.

43.06  
43.08  
43.13  
GARY CIRCLE

FOUND: NOTHING  
TAG # \_\_\_\_\_ IN \_\_\_\_\_

29 TIES COURTESY  
WEBB ENG.  
ALL TIE POINTS  
LS 2344 TAG  
ON CURB

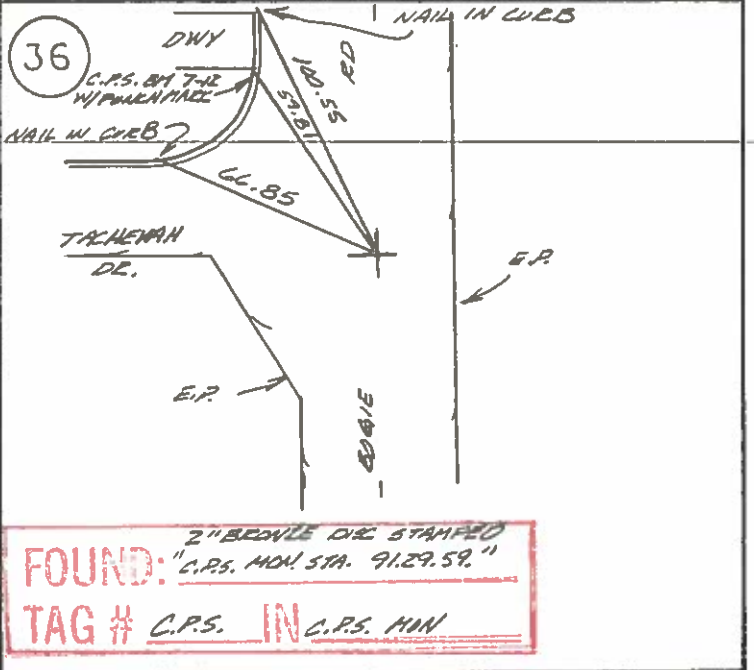
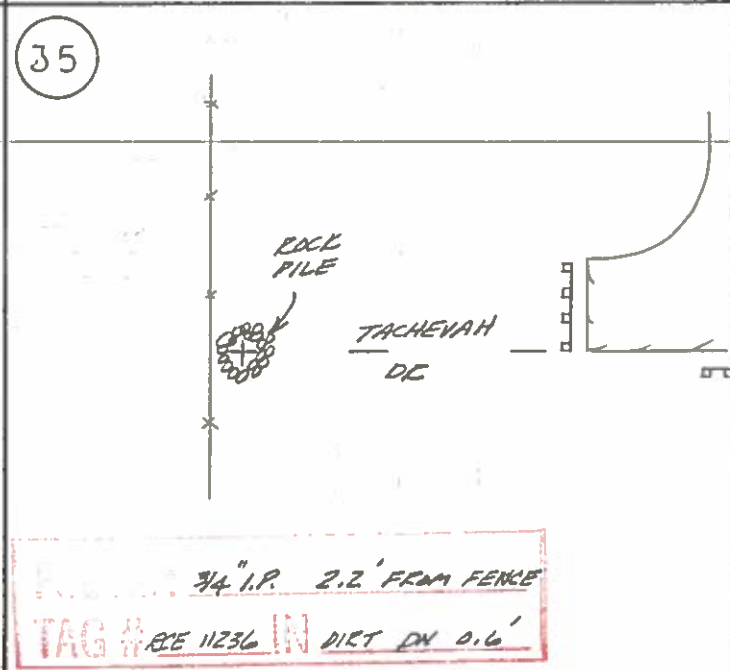
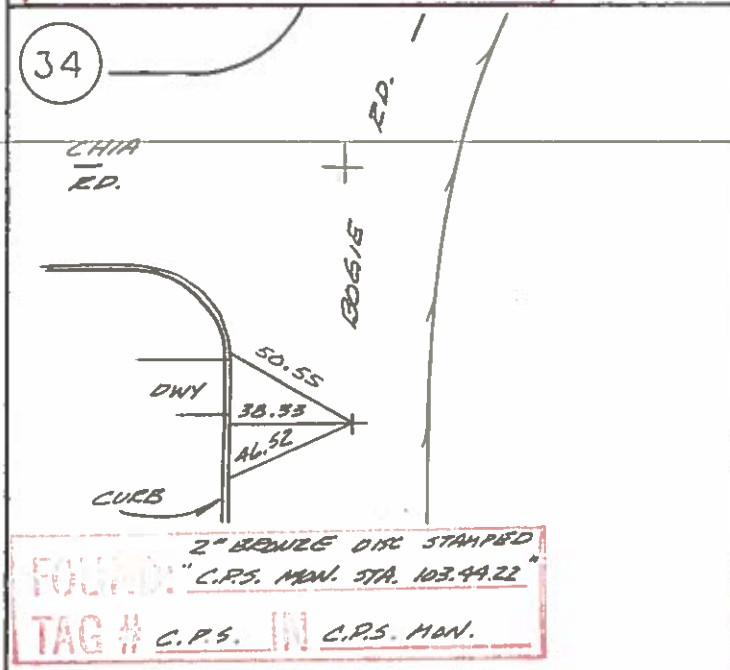
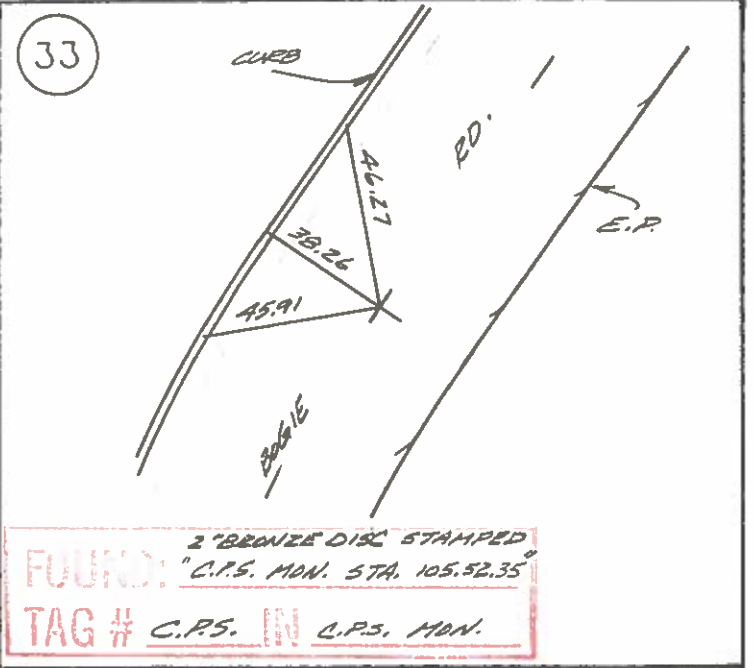
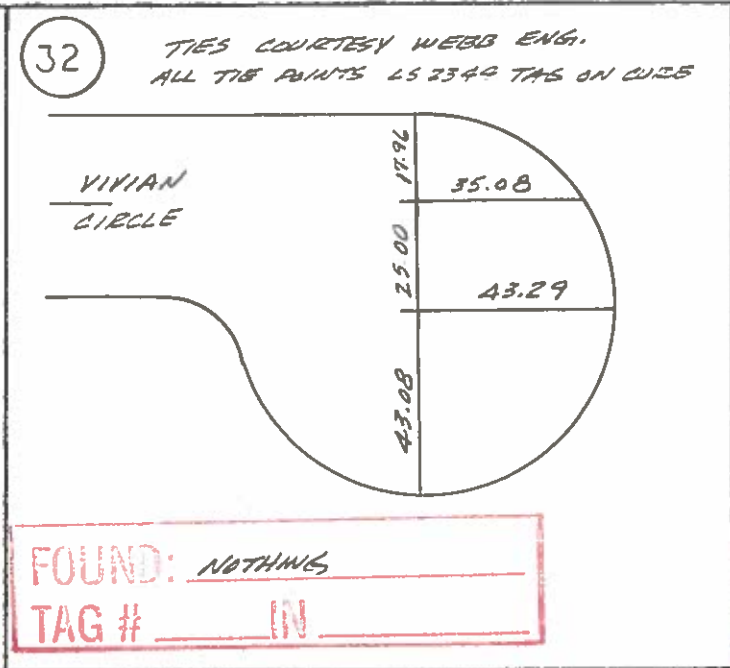
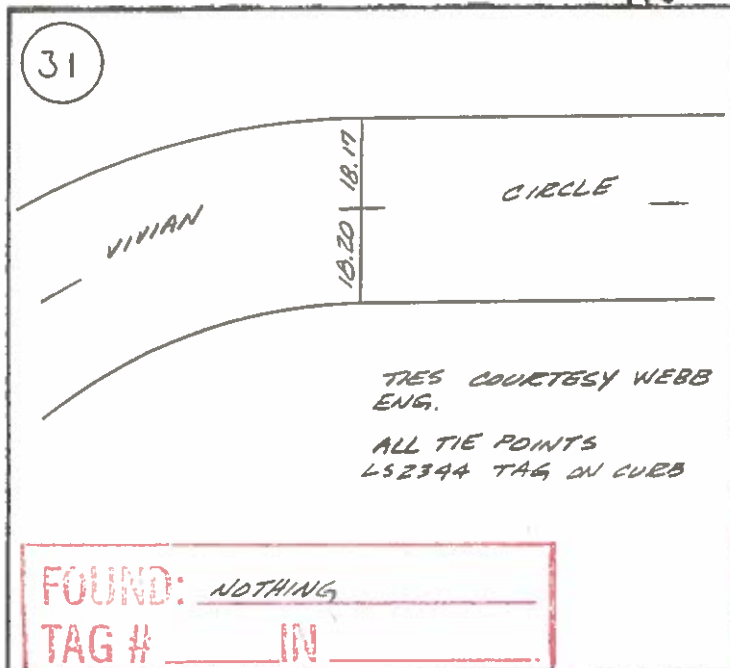
VIA ROBERTO  
37.53  
20.15  
37.57  
VIVIAN CIRCLE  
18.18  
18.17  
MIGUEL

FOUND: NOTHING  
TAG # \_\_\_\_\_ IN \_\_\_\_\_

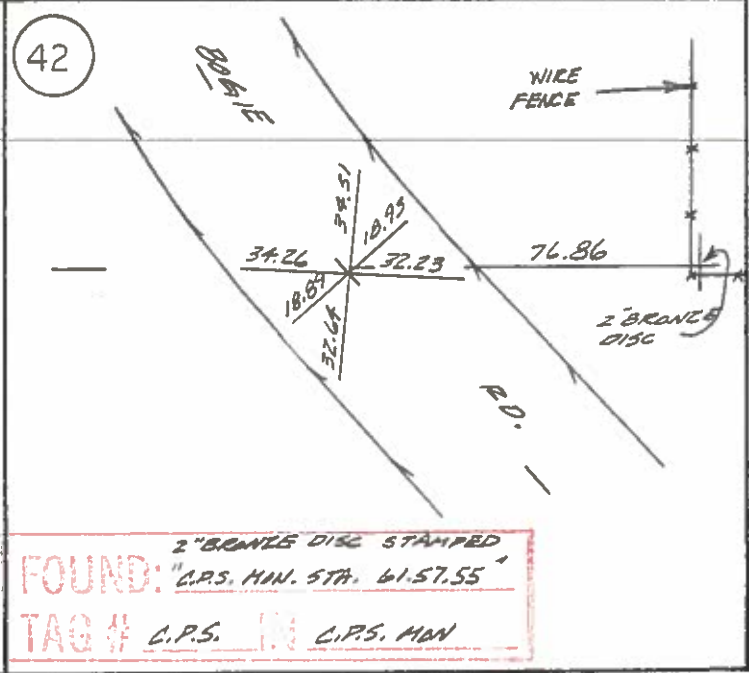
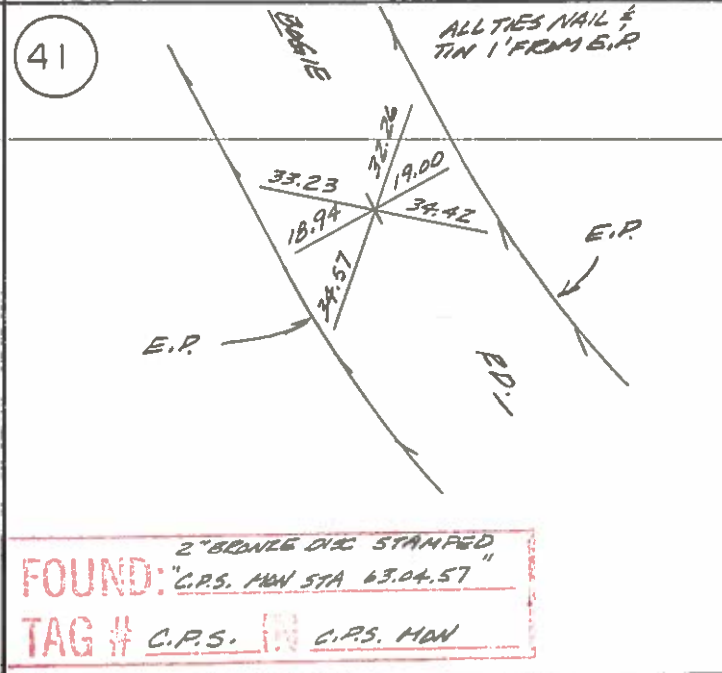
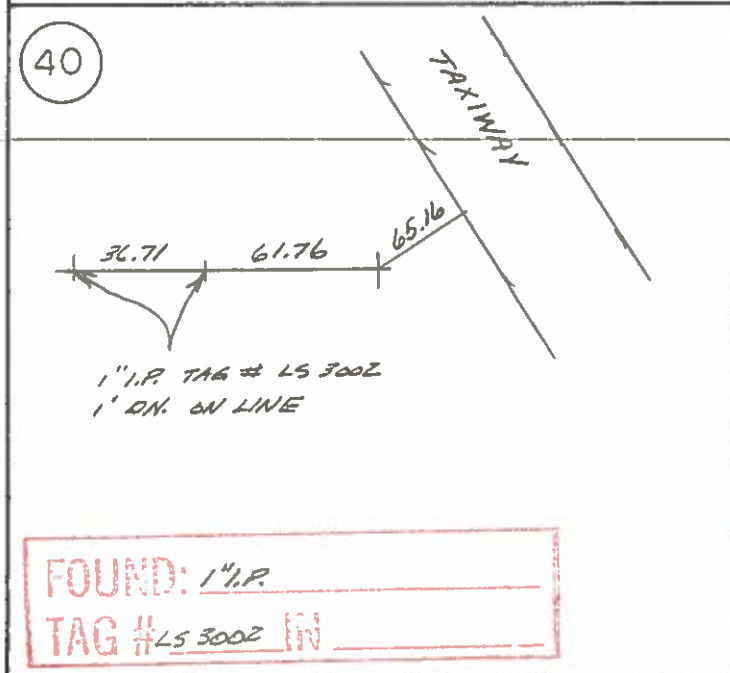
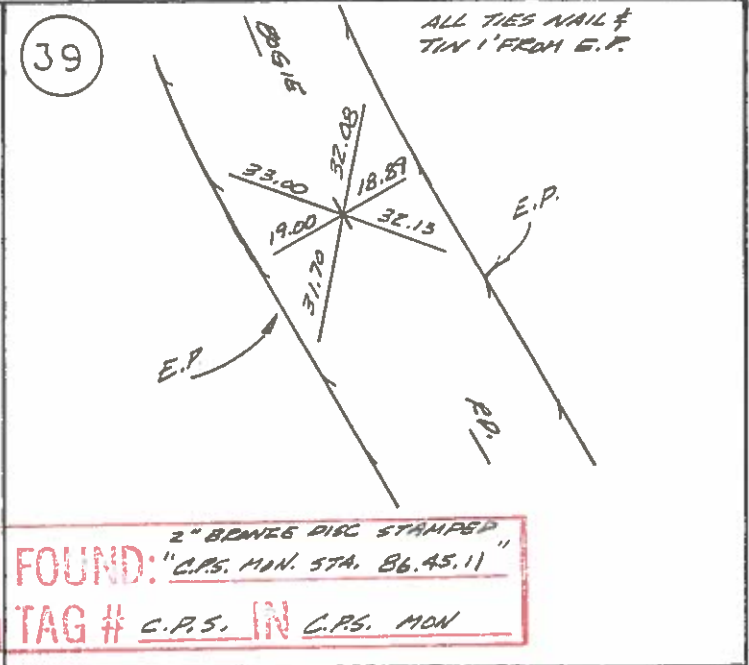
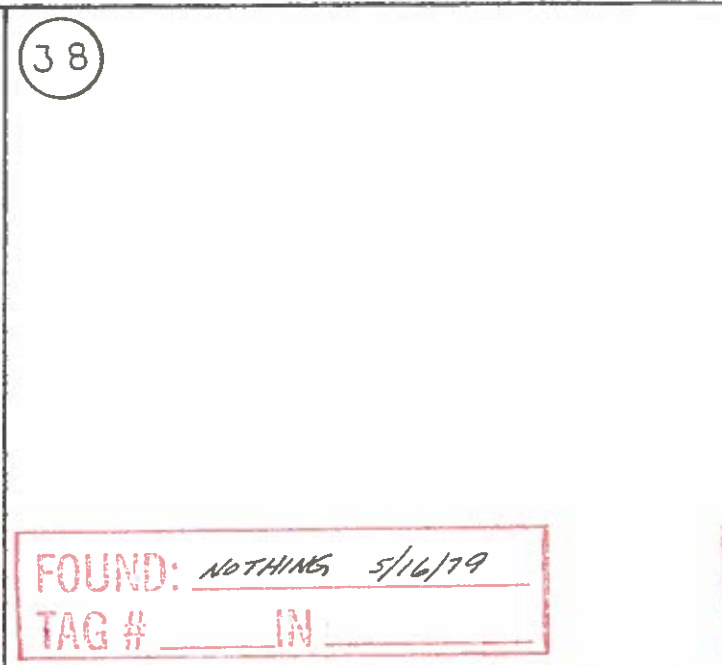
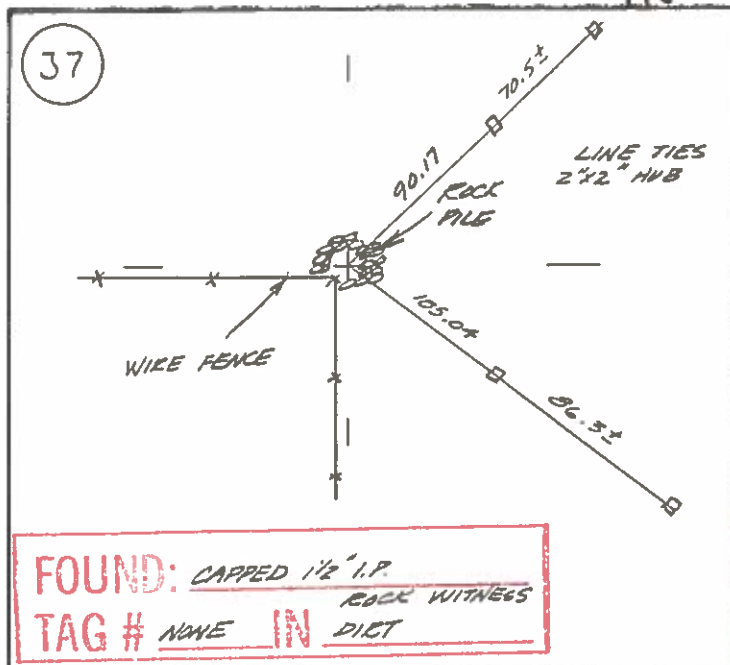
30 TIES COURTESY WEBB  
ENG.  
ALL TIE POINTS  
LS 2344 TAG  
ON CURB

VIA  
25.56  
25.27  
EDUARDO MIGUEL

FOUND: NOTHING  
TAG # \_\_\_\_\_ IN \_\_\_\_\_









<p>43</p> <p>3 NAILS AND TINS 1' FROM E.P.</p> <p>85.49</p> <p>76.86</p> <p>47.40</p> <p>WIRE FENCE</p> <p>BBE/E</p> <p>2" BRONZE DISC IN C.P.S. MON WELL</p> <p>E.P.</p> <p>FOUND: 2" BRONZE DISC STAMPED "C.P.S. 1972 S. 1/4 COR. SEC 7"</p> <p>TAG # C.P.S. IN DIRT</p>	<p>44</p> <p>5' SWING TIES 1"x2" HUBS</p> <p>39.5'</p> <p>ROCK PILE</p> <p>FOUND: 1/4" I.P. SET 2x2" HUB</p> <p>TAG # C.P.S. TAG. FLUSH COUNTY SIGNATURE [ ] CONC. ON 1.6'</p>	<p>○</p>
<p>○</p>	<p>○</p>	<p>○</p>



# ERVIN ENGINEERING

CIVIL ENGINEERS · LAND PLANNERS · CONSULTANTS  
A DIVISION OF ERVIN GHORMLEY, JOHNSON & ASSOCIATES  
LOS ANGELES · NEWPORT BEACH · CAMARILLO · INDIO · GROVER CITY

SHEET 4 OF 5

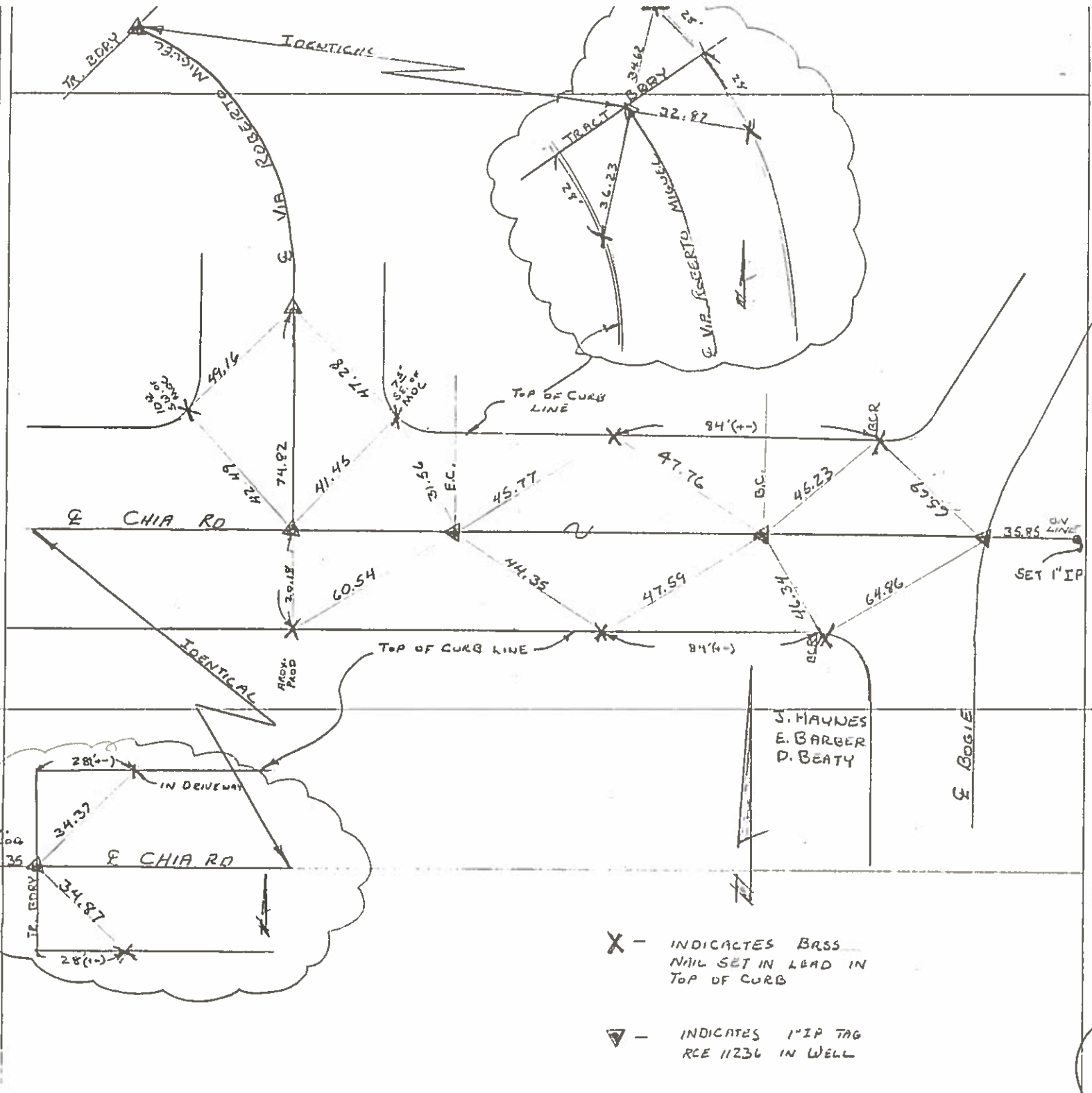
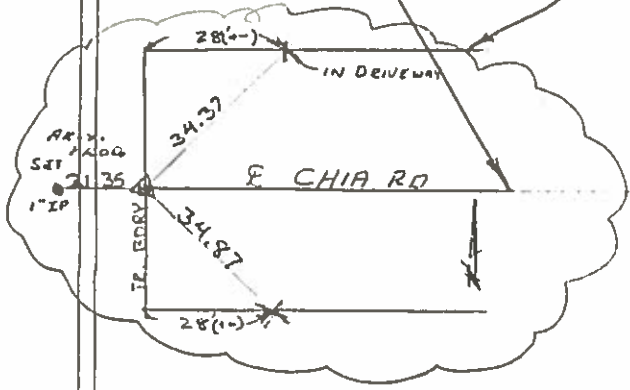
W.O. 945-1 DATE: 4-15-80

IDENT. TR 12182

CALCS BY \_\_\_\_\_ CK'D by \_\_\_\_\_

## MOUMENT TIES FAIRPORT TR 12182

RCE No. \_\_\_\_\_



- X - INDICATES BRASS NAIL SET IN LEAD IN TOP OF CURB
- ▽ - INDICATES 1"IP TAG RCE 11236 IN WELL

45

Originated from:

- 621 SOUTH WESTMORELAND, LOS ANGELES, CALIFORNIA 90005
- 4500 CAMPUS DRIVE, SUITE 114, NEWPORT BEACH, CALIFORNIA 92660
- 615 NORTH EUCLID AVENUE, SUITE 211, ONTARIO, CALIFORNIA 91761
- 1211 PIKE LANE, OCEANO, CALIFORNIA 93445

(213) 385-7134  
(714) 556-2960  
(714) 984-1741  
(805) 489-7613



# ERVIN ENGINEERING

CIVIL ENGINEERS · LAND PLANNERS · CONSULTANTS

A DIVISION OF ERVIN GHORMLEY, JOHNSON & ASSOCIATES  
LOS ANGELES · NEWPORT BEACH · CAMARILLO · INDIO · GROVER CITY

SHEET 3 OF 5

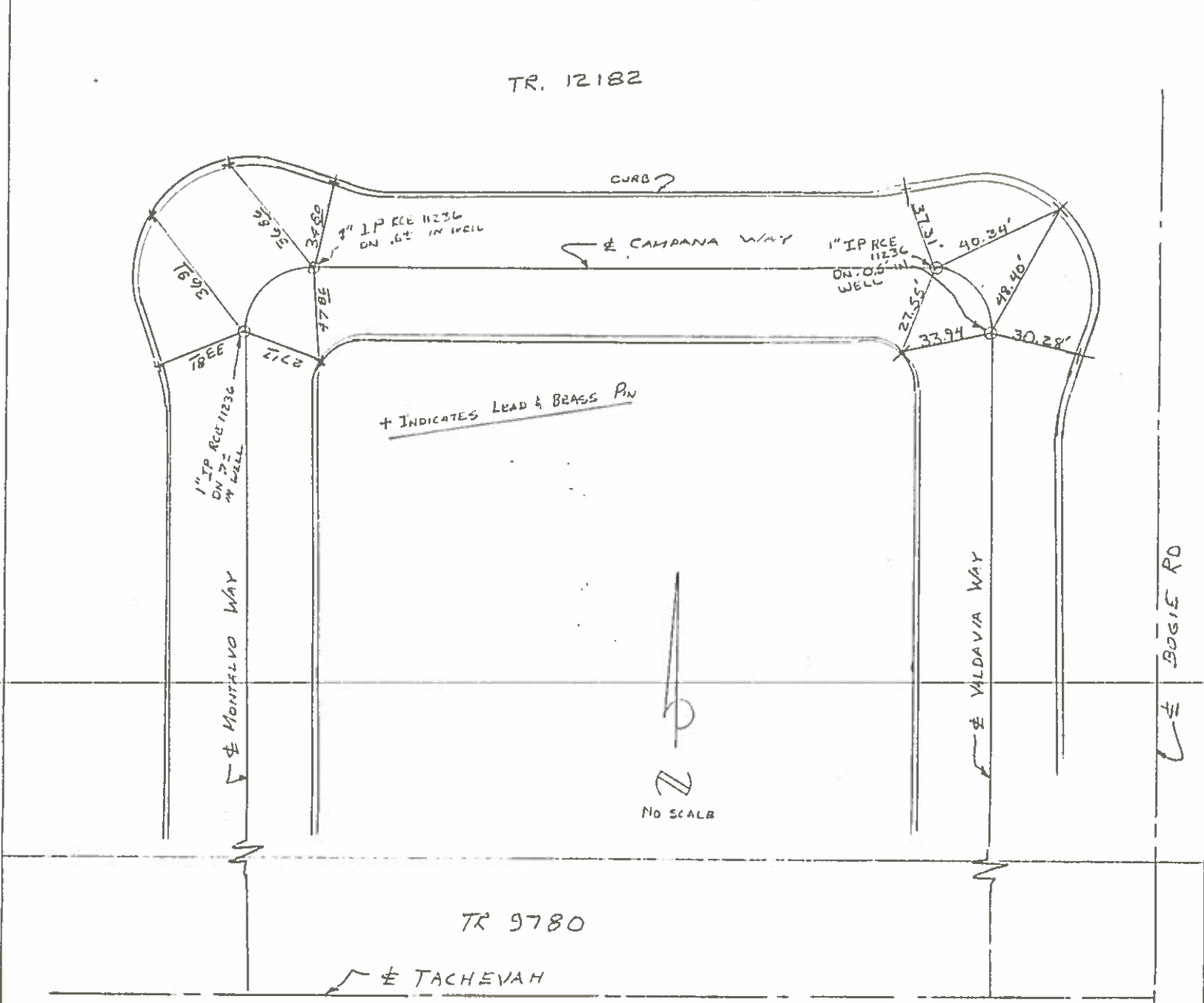
W.O. 946-1 DATE: 4-11-80

IDENT. TR 12182

CALCS by \_\_\_\_\_ CK'D by \_\_\_\_\_

*Mount Ties*

RCE No.



45

Originated from

- 621 SOUTH WESTMORELAND, LOS ANGELES, CALIFORNIA 90005
- 4500 CAMPUS DRIVE, SUITE 114, NEWPORT BEACH, CALIFORNIA 92660
- 615 NORTH EUCLID AVENUE, SUITE 211, ONTARIO, CALIFORNIA 91761
- 1211 PIKE LANE, OCEANO, CALIFORNIA 93445

- (213) 385-7134
- (714) 556-2960
- (714) 984-1741
- (805) 489-7613





# ERVIN ENGINEERING

CIVIL ENGINEERS · LAND PLANNERS · CONSULTANTS

A DIVISION OF ERVIN, GHORMLEY, JOHNSON & ASSOCIATES  
LOS ANGELES · NEWPORT BEACH · CAMARILLO · INDIO · GROVER CITY

SHEET 2 OF 5

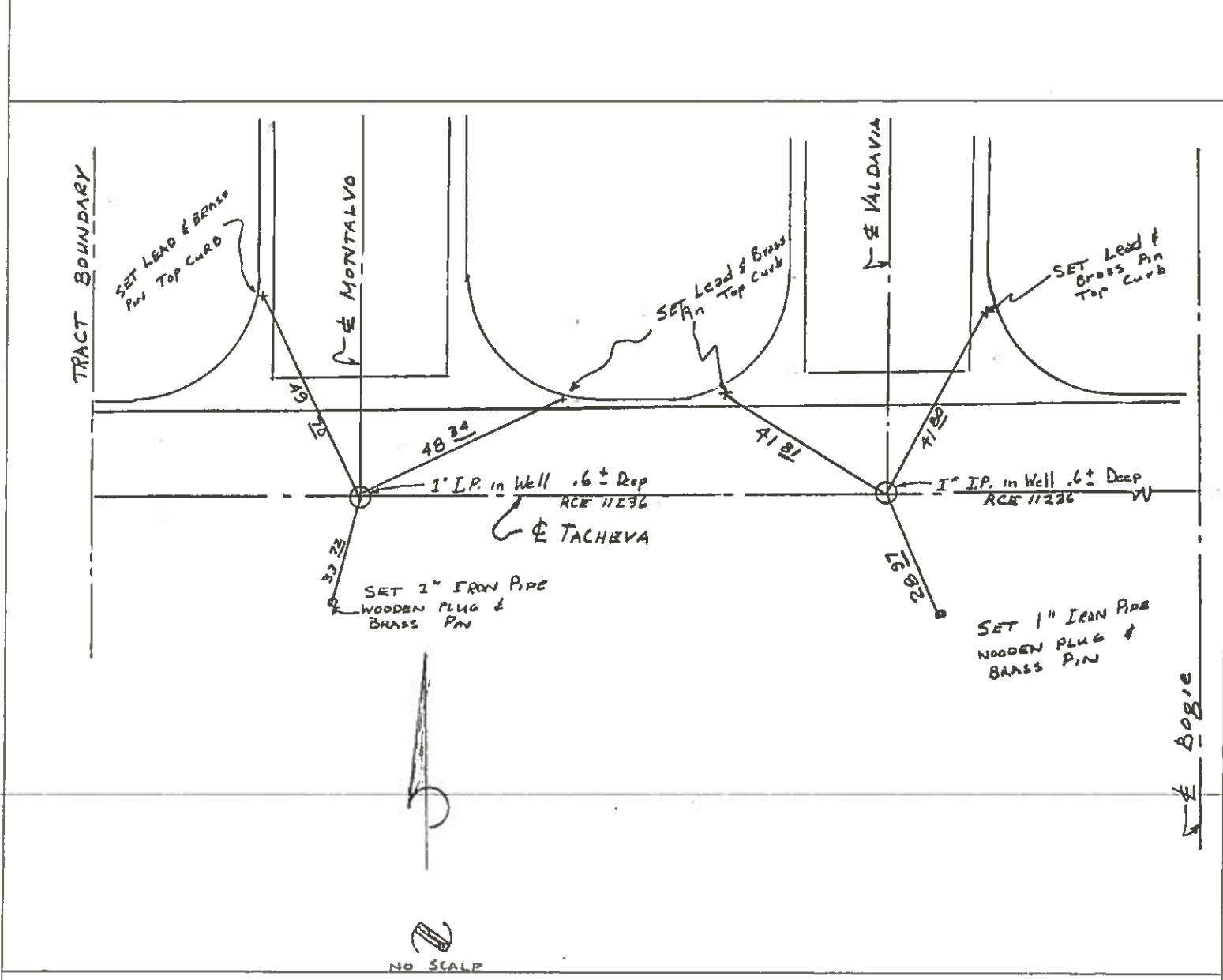
W.O. 945-1 DATE: 4-11-80

IDENT. TR. 9780

CALCS by CK'D by

☉ MOUNT TIES (FAIRPORT)

RCE No.



Originated From:

- 729 SOUTH PARK VIEW STREET, LOS ANGELES, CALIFORNIA 90057 (213) 385-7134
- 4500 CAMPUS DRIVE, SUITE 114, NEWPORT BEACH, CALIFORNIA 92660 (714) 556-2960

46



# ERVIN ENGINEERING

CIVIL ENGINEERS · LAND PLANNERS · CONSULTANTS

A DIVISION OF ERVIN, GHORMLEY, JOHNSON & ASSOCIATES  
LOS ANGELES · NEWPORT BEACH · CAMARILLO · INDIO · GROVER CITY

SHEET 1 OF 5

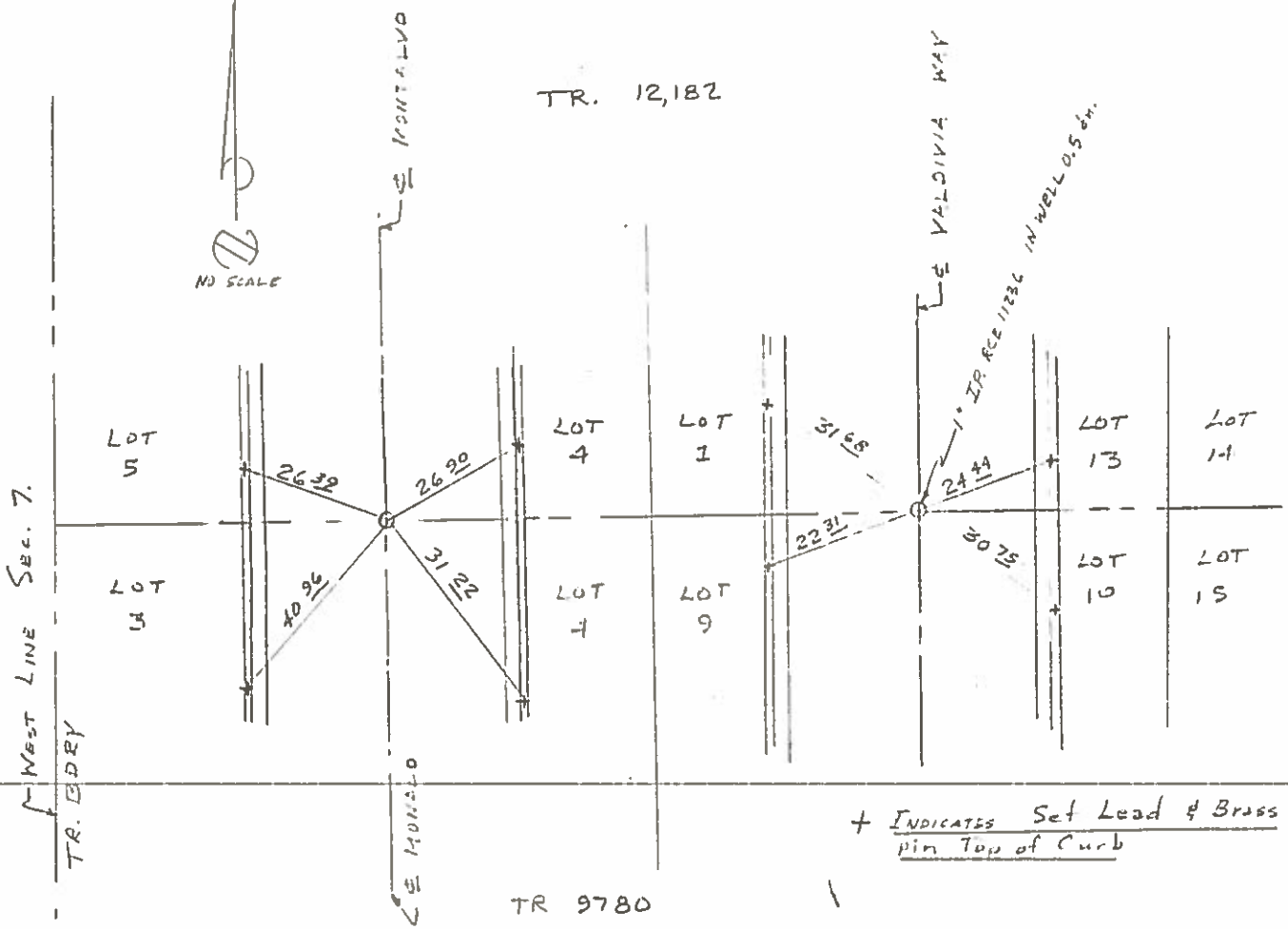
W.O. 945-1 DATE: 4-11-80

IDENT. TR 9780 FOR 12182

CALCS by \_\_\_\_\_ CK'D by \_\_\_\_\_

E MOUNT TIES (Fireport)

RCE No. \_\_\_\_\_



← BOGIE

46

Originated From:

- 729 SOUTH PARK VIEW STREET, LOS ANGELES, CALIFORNIA 90057 (213) 385-7134
- 4500 CAMPUS DRIVE, SUITE 114, NEWPORT BEACH, CALIFORNIA 92660 (714) 556-2960