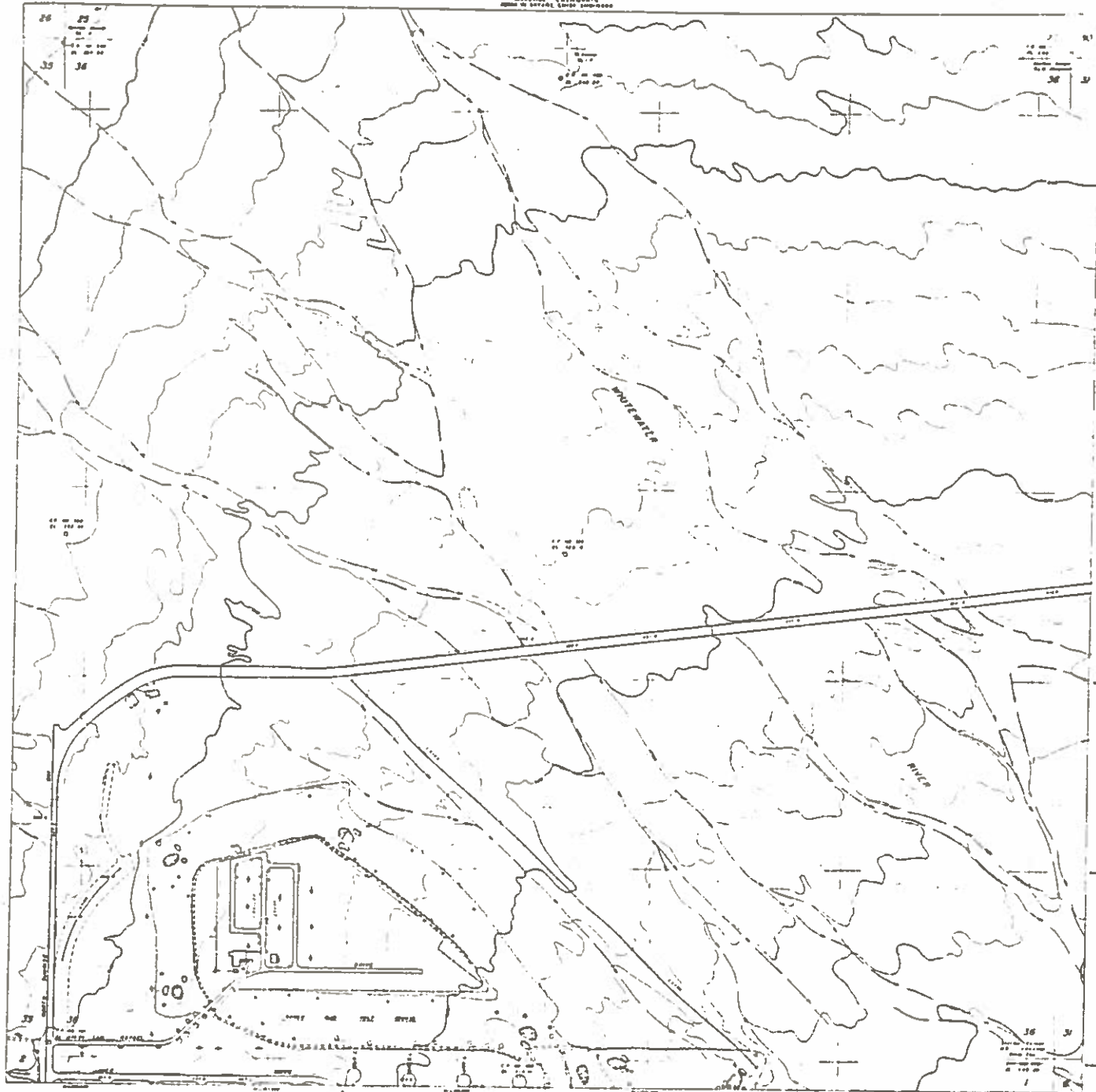


RIVERSIDE COUNTY FLOOD CONTROL AND
WATER CONSERVATION DISTRICT
ENGINEERING DIVISION
OFFICE OF SPECIAL LOCAL ASSISTANCE



Revised under the authority of the Flood Control Act of 1954
under authority of the Flood Control Act of 1954
approved by the Board of Directors of the Flood Control and
Water Conservation District of Riverside County, California
on 10/10/54. (Approved by the Board of Directors of
R.C.W.C.D. on 10/10/54 and 11/10/54 and 12/10/54)
S.C. 1000 feet and 1000 feet contour lines shown
except where noted otherwise. (Scale 1:50,000)

ADDITIONAL MAP INFORMATION
SEE SHEET 100-100-100

SCALE BAR
1 INCH = 1 MILE
1:50,000
THIS MAP SHOWS THE GENERAL MAP
ADJUSTED TO THE
ADJUSTED TO THE

VERTICAL CURVE
NO. 100-100-100
NO. 100-100-100
NO. 100-100-100
NO. 100-100-100

□	□	□	□	□	□	□	□	□	□
□	□	□	□	□	□	□	□	□	□
□	□	□	□	□	□	□	□	□	□
□	□	□	□	□	□	□	□	□	□
□	□	□	□	□	□	□	□	□	□
□	□	□	□	□	□	□	□	□	□
□	□	□	□	□	□	□	□	□	□
□	□	□	□	□	□	□	□	□	□
□	□	□	□	□	□	□	□	□	□
□	□	□	□	□	□	□	□	□	□

SECTION 36
138, 242
SUB & M