



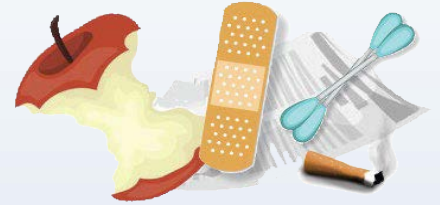
SANITARY  
WIPES



FEMININE  
HYGIENE  
PRODUCTS



MEDICATIONS &  
SUPPLEMENTS



TRASH



METALS &  
PLASTICS



CHEMICALS



FATS,  
OILS & GREASE

# Please **DO NOT** Flush

Even though a product may be small enough to be flushed, does not mean it should be. Flushing items that are not meant to be flushed, including those labeled **flushable**, can lead to problems in the sewer system, at the wastewater treatment facility, and for the environment.

# Things to *NEVER* flush:

**Baby Wipes and Diapers (including 'flushable' or 'disposable')**: These highly absorbent synthetic materials are slow to breakdown and can clog sewer systems.

**Paper Towels**: Just like wipes, these common household items are designed to not breakdown when wet and absorb liquids.

**Cotton Balls, Cosmetic Pads and Cotton Swabs**: These non-flushable items tend to gather in pipe bends causing blockages.

**Dental Floss**: This little string can cause havoc to plumbing and sewer systems.

**Medications or Supplements**: Wastewater treatment facilities are not designed to breakdown pharmaceuticals. While drugs may dilute in the waste stream, studies have shown the presence of medicines such as steroid hormones and antidepressants in wastewater effluent.

**Medical Supplies**: Razors, bandages and hypodermic needles are often flushed, but quite simply, they don't degrade. The razor blades, needles also present a danger to employees who need to remove the items that clog the system.

**Rubber**: Items such as latex gloves and condoms are made of a material that is not intended to breakdown in liquid.

**Feminine Hygiene Products (sanitary napkins, tampons and applicators)**: Like cat litter, these products are designed to absorb liquids and swell in the process, clog pipes, get stuck in bends and block sewer lines.

**Fats, Oil, and Grease**: Known in the wastewater industry as 'FOG', are liquids that solidify when cooled, and this creates significant problems for public wastewater systems, as well as drains in your home.

**Cat Litter (including 'flushable')**: The absorbent properties of litter are designed to 'clump' and will clog sewer systems.

**Hair**: Like dental floss, flushed hair can cause tangled blockages ensnaring everything that passes by.

**Food Products - bananapeels, applecores, leftovers, etc**: While these may degrade over time, food products simply do not disintegrate fast enough and can cause blockages throughout the system.

**Trash of any kind**: All this litter does not easily biodegrade.

- Candy and other food wrappers
- Cigarette butts
- Rags
- Plastic Bags

**Chemicals**: Paint, automotive fluids, solvents, and poisons, are just terrible pollutants to flush. Just as wastewater treatment plants are not designed to screen out pharmaceuticals, these facilities are not designed to eliminate toxic chemicals.

**Heavy Metals**: These pollutants include mercury, cadmium, arsenic, lithium (think batteries) and lead, etc. Please dispose of any of these toxins properly to prevent harm to the environment and the potential for serious health risks.

