

Luminaire Locations										
No.	Label	Location					Aim			
		X	Y	Z	MH	Orientation	Tilt	X	Y	Z
1	PA	412.21	489.58	18.00	18.00	180.00	0.00	412.21	489.58	0.00
3	PA	368.24	455.14	18.00	18.00	180.00	0.00	368.24	455.14	0.00
1	PB	378.35	60.26	25.00	25.00	0.00	0.00	378.35	60.26	0.00
2	PB	310.17	101.93	25.00	25.00	61.91	0.00	310.17	101.93	0.00
3	PB	277.65	161.77	25.00	25.00	54.33	0.00	277.65	161.77	0.00
4	PB	239.76	220.78	25.00	25.00	54.33	0.00	239.76	220.78	0.00
5	PB	197.09	275.49	25.00	25.00	54.33	0.00	197.09	275.49	0.00
6	PB	152.36	334.16	25.00	25.00	54.33	0.00	152.36	334.16	0.00
7	PB	87.02	441.70	25.00	25.00	60.00	0.00	87.02	441.70	0.00
8	PB	85.72	473.34	25.00	25.00	180.00	0.00	85.72	473.34	0.00
10	PB	115.13	390.11	25.00	25.00	54.33	0.00	115.13	390.11	0.00
2	PC	461.47	447.79	10.00	10.00	338.00	0.00	461.47	447.79	0.00
3	PC	639.35	97.72	10.00	10.00	0.00	0.00	639.35	97.72	0.00
4	PC	628.98	134.11	10.00	10.00	0.00	0.00	628.98	134.11	0.00
1	PD	440.61	480.53	10.00	10.00	147.76	0.00	440.61	480.53	0.00
1	WA	353.26	412.63	12.00	12.00	58.02	0.00	353.26	412.63	0.00
2	WA	453.67	425.11	12.00	12.00	332.93	0.00	453.67	425.11	0.00
3	WA	400.09	396.26	12.00	12.00	332.93	0.00	400.09	396.26	0.00
4	WA	427.25	410.86	12.00	12.00	332.93	0.00	427.25	410.86	0.00
5	WA	327.73	413.97	12.00	12.00	330.00	0.00	327.73	413.97	0.00
11	WA	251.72	413.84	12.00	12.00	330.00	0.00	251.72	413.84	0.00
12	WA	225.52	453.13	12.00	12.00	180.00	0.00	225.52	453.13	0.00
13	WA	275.52	453.13	12.00	12.00	180.00	0.00	275.52	453.13	0.00
14	WA	325.52	453.13	12.00	12.00	180.00	0.00	325.52	453.13	0.00
17	WA	252.71	344.91	12.00	12.00	240.00	0.00	252.71	344.91	0.00
18	WA	281.22	292.12	12.00	12.00	240.00	0.00	281.22	292.12	0.00
19	WA	304.28	270.48	12.00	12.00	240.00	0.00	304.28	270.48	0.00
20	WA	323.29	235.28	12.00	12.00	240.00	0.00	323.29	235.28	0.00
22	WA	361.31	164.89	12.00	12.00	240.00	0.00	361.31	164.89	0.00
23	WA	380.16	130.00	12.00	12.00	240.00	0.00	380.16	130.00	0.00
24	WA	398.27	138.35	12.00	12.00	150.00	0.00	398.27	138.35	0.00
25	WA	421.85	98.71	12.00	12.00	0.00	0.00	421.85	98.71	0.00
26	WA	471.85	98.71	12.00	12.00	0.00	0.00	471.85	98.71	0.00
27	WA	521.85	98.71	12.00	12.00	0.00	0.00	521.85	98.71	0.00
28	WA	571.85	98.71	12.00	12.00	0.00	0.00	571.85	98.71	0.00
29	WA	621.85	98.71	12.00	12.00	0.00	0.00	621.85	98.71	0.00
30	WA	469.15	135.73	12.00	12.00	150.00	0.00	469.15	135.73	0.00
31	WA	505.79	155.38	12.00	12.00	150.00	0.00	505.79	155.38	0.00
32	WA	533.39	137.90	12.00	12.00	240.00	0.00	533.39	137.90	0.00
33	WA	592.54	156.82	12.00	12.00	150.00	0.00	592.54	156.82	0.00
34	WA	548.44	133.08	12.00	12.00	150.00	0.00	548.44	133.08	0.00
35	WA	586.39	192.03	12.00	12.00	60.00	0.00	586.39	192.03	0.00
36	WA	596.97	171.68	12.00	12.00	60.00	0.00	596.97	171.68	0.00
38	WA	315.16	394.54	12.00	12.00	240.00	0.00	315.16	394.54	0.00
45	WA	270.18	411.27	12.00	12.00	60.00	0.00	270.18	411.27	0.00
56	WA	410.74	89.29	12.00	12.00	270.00	0.00	410.74	89.29	0.00
57	WA	342.30	200.09	12.00	12.00	240.00	0.00	342.30	200.09	0.00
60	WA	164.34	456.71	12.00	12.00	270.00	0.00	164.34	456.71	0.00
61	WA	338.92	350.55	12.00	12.00	240.00	0.00	338.92	350.55	0.00
62	WA	293.95	367.28	12.00	12.00	60.00	0.00	293.95	367.28	0.00
63	WA	362.68	306.56	12.00	12.00	240.00	0.00	362.68	306.56	0.00
64	WA	317.71	323.29	12.00	12.00	60.00	0.00	317.71	323.29	0.00
65	WA	386.44	262.56	12.00	12.00	240.00	0.00	386.44	262.56	0.00
66	WA	341.47	279.29	12.00	12.00	60.00	0.00	341.47	279.29	0.00
67	WA	410.21	218.57	12.00	12.00	240.00	0.00	410.21	218.57	0.00
68	WA	365.23	235.30	12.00	12.00	60.00	0.00	365.23	235.30	0.00
69	WA	433.97	174.58	12.00	12.00	240.00	0.00	433.97	174.58	0.00
70	WA	389.00	191.31	12.00	12.00	60.00	0.00	389.00	191.31	0.00
71	WA	457.66	130.70	12.00	12.00	240.00	0.00	457.66	130.70	0.00
72	WA	412.68	147.43	12.00	12.00	60.00	0.00	412.68	147.43	0.00
1	WB	175.52	453.13	12.00	12.00	180.00	0.00	175.52	453.13	0.00
2	WB	222.61	398.15	12.00	12.00	330.00	0.00	222.61	398.15	0.00
3	WB	211.05	390.41	12.00	12.00	240.00	0.00	211.05	390.41	0.00
4	WB	234.70	346.71	12.00	12.00	240.00	0.00	234.70	346.71	0.00
4	PA	385.35	475.81	18.00	18.00	180.00	0.00	385.35	475.81	0.00
73	WA	266.96	318.52	12.00	12.00	240.00	0.00	266.96	318.52	0.00

Statistics						
Description	Symbol	Avg	Max	Min	Avg/Min	
Calc Zone #1-Entrance	+	3.1 fc	5.3 fc	1.8 fc	2.8:1	1.6:1
Calc Zone #2-Parking public front of Gate	+	2.1 fc	3.8 fc	1.3 fc	2.8:1	1.6:1
Calc Zone #3-Parking, Drive, Storage area	+	1.9 fc	4.1 fc	1.0 fc	4.1:1	1.9:1
Calc Zone #4-Exit Only Gate	+	3.1 fc	4.0 fc	1.8 fc	2.2:1	1.7:1
Calc Zone #5	+	0.2 fc	0.6 fc	0.0 fc	N/A	N/A
Calc Zone #6-Sidewalk, SE	+	2.1 fc	2.7 fc	1.3 fc	2.1:1	1.6:1

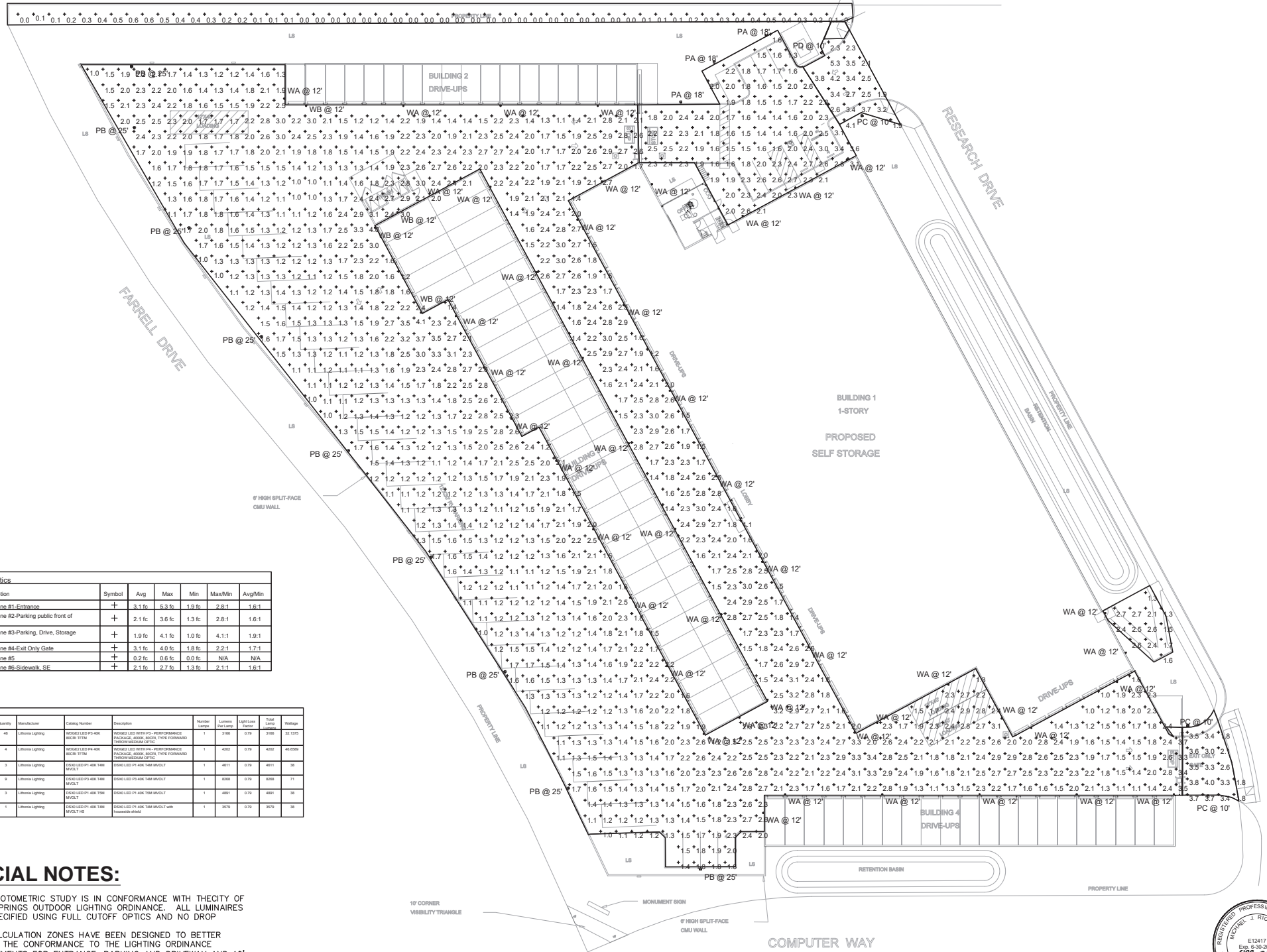
Symbol	Label	Quantity	Manufacturer	Model Number	Description	Mounting	Height	Beam Spread	Foot Candles	Notes
WA	4	Offices Lighting	HOBI LED P1 4K T8M MOUNT	HOBI LED P1 4K T8M MOUNT	HOBI LED P1 4K T8M MOUNT	1	3000	375	3000	32 1375
WB	4	Offices Lighting	HOBI LED P1 4K T8M MOUNT	HOBI LED P1 4K T8M MOUNT	HOBI LED P1 4K T8M MOUNT	1	4000	575	4000	48 8000
PA	3	Offices Lighting	HOBI LED P1 4K T8M MOUNT	HOBI LED P1 4K T8M MOUNT	HOBI LED P1 4K T8M MOUNT	1	4000	575	4000	36
PB	3	Offices Lighting	HOBI LED P1 4K T8M MOUNT	HOBI LED P1 4K T8M MOUNT	HOBI LED P1 4K T8M MOUNT	1	4000	575	4000	36
PC	1	Offices Lighting	HOBI LED P1 4K T8M MOUNT	HOBI LED P1 4K T8M MOUNT	HOBI LED P1 4K T8M MOUNT	1	4000	575	4000	36
PD	1	Offices Lighting	HOBI LED P1 4K T8M MOUNT	HOBI LED P1 4K T8M MOUNT	HOBI LED P1 4K T8M MOUNT	1	3075	575	3075	30

GENERAL NOTES - SITE PHOTOMETRICS:

- THIS PHOTOMETRIC STUDY IS BASED ON USING THE LUMINAIRES LISTED IN THE LUMINAIRE SCHEDULE, THIS SHEET. OTHER MANUFACTURER/ MODELS OF EQUAL PHOTOMETRIC DISTRIBUTION, WATTAGE AND EQUAL OR BETTER LUMENS PER WATT ARE ALLOWED AS SUBSTITUTIONS; HOWEVER, CONTRACTOR SHALL PROVIDE NEW PHOTOMETRIC SITE LIGHTING PLANS FOR APPROVAL AND SUBMITTAL TO THE PLANNING DEPARTMENT AS A CHANGE.
- THE NUMBERS SHOWN PLOTTED ON THE SITE PLAN ARE HORIZONTAL FOOT-CANDLES AT GRADE LEVEL.
- ALL LUMINAIRES RATED GREATER THAN 40 WATTS, AND INSTALLED 24 FEET OR LESS ABOVE GRADE, WHETHER POLE OR WALL MOUNTED, SHALL BE EQUIPPED WITH MOTION SENSOR, PHOTO CONTROL AND DIMMING CONTROLS AS REQUIRED TO MEET THE CA TITLE 24 ENERGY CODE SECTION 130.2(c)3.D.
- LUMINAIRES THAT ARE RATED 40 WATTS OR LESS AND INSTALLED 24 FEET OR LESS ABOVE GRADE SHALL NOT BE REQUIRED TO BE EQUIPPED WITH MOTION SENSORS AND DIMMING CONTROLS. SEE CA TITLE 24 ENERGY CODE, SECTION 130.2(c)3.D, EXCEPTION 1.
- POLE TOP LUMINAIRES SHALL BE MOUNTED ON SQUARE STEEL POLES, 20.0' HIGH ON A 30" CONCRETE BASE FOR A TOTAL HEIGHT OF 22.5' ABOVE GRADE. DETAILS SHALL BE PROVIDED DURING THE CONSTRUCTION PHASE OF THE PROJECT.
- ALL LIGHTING SHALL BE CONTROLLED BY ASTRONOMICAL TIME SWITCH WITH AUTOMATIC SCHEDULING CAPABILITIES PER TITLE 24.
- THE STATISTICAL DATA IS FOR THE FOOT-CANDLES POINTS LOCATED ON THE HARDSCAPE AREAS.

SPECIAL NOTES:

- THIS PHOTOMETRIC STUDY IS IN CONFORMANCE WITH THE CITY OF PALM SPRINGS OUTDOOR LIGHTING ORDINANCE. ALL LUMINAIRES ARE SPECIFIED USING FULL CUTOFF OPTICS AND NO DROP LENSES.
- THE CALCULATION ZONES HAVE BEEN DESIGNED TO BETTER ASSESS THE CONFORMANCE TO THE LIGHTING ORDINANCE REQUIREMENTS FOR ENTRANCE, PARKING AND DRIVEWAY AND 10' BEYOND THE PROPERTY LINE.
- THE POLE LIGHTS AT THE ENTRY AND EXIT HAVE BEEN DESIGNED FOR 10-FOOT HIGH POLES IN ACCORDANCE WITH THE LIGHTING ORDINANCE. POLES IN THE BACK STORAGE AREA ARE AT THE MAXIMUM ALLOWED HEIGHT OF 25 FEET FOR COMMERCIAL DEVELOPMENTS.
- THE POLE HEIGHTS HAVE BEEN OPTIMIZED TO PROVIDE THE MOST UNIFORM LIGHTING IN ACCORDANCE WITH THE ORDINANCE.



SITE LIGHTING PHOTOMETRIC PLAN
SCALE: 1"=30'-0"



REVIEWED 02/07/2022
RICHARDSON ENGINEERING
ELECT. ENGINEERS
345 JACOBSON ROAD
SANDPOINT, ID 83864
(208) 255-1600
mjrichpe@gmail.com



950 N. FARRELL DRIVE
PALM SPRINGS, CA

SITE LIGHTING PHOTOMETRIC PLAN
02-08-2022

SHEET 11



D-Series Size 0 LED Area Luminaire

Capable Luminaire

Specifications

- Length: 12"
- Width: 4"
- Height: 2"
- Weight (max): 1.5 lbs

Select 3000K To Meet the 3-U-G maximums for pole lights within 0.5 mounting heights of property lines. (Call Green Code)

Ordering Information

EXAMPLE: DSX0 LED P6 40K T3M MVOLT SPA DBX0

Order Code	Color	Mounting	Finish	Shipping
DSX0	P6	T3M	DBX0	DBX0

Shipping included: DBX0 Dark bronze, DBL0 Black, DBAL0 Anodized aluminum, DBW0 Silver, DBSD0 Stainless steel, DBSD1 Stainless steel, DBSD2 Stainless steel, DBSD3 Stainless steel, DBSD4 Stainless steel, DBSD5 Stainless steel, DBSD6 Stainless steel, DBSD7 Stainless steel, DBSD8 Stainless steel, DBSD9 Stainless steel, DBSD10 Stainless steel, DBSD11 Stainless steel, DBSD12 Stainless steel, DBSD13 Stainless steel, DBSD14 Stainless steel, DBSD15 Stainless steel, DBSD16 Stainless steel, DBSD17 Stainless steel, DBSD18 Stainless steel, DBSD19 Stainless steel, DBSD20 Stainless steel, DBSD21 Stainless steel, DBSD22 Stainless steel, DBSD23 Stainless steel, DBSD24 Stainless steel, DBSD25 Stainless steel, DBSD26 Stainless steel, DBSD27 Stainless steel, DBSD28 Stainless steel, DBSD29 Stainless steel, DBSD30 Stainless steel, DBSD31 Stainless steel, DBSD32 Stainless steel, DBSD33 Stainless steel, DBSD34 Stainless steel, DBSD35 Stainless steel, DBSD36 Stainless steel, DBSD37 Stainless steel, DBSD38 Stainless steel, DBSD39 Stainless steel, DBSD40 Stainless steel, DBSD41 Stainless steel, DBSD42 Stainless steel, DBSD43 Stainless steel, DBSD44 Stainless steel, DBSD45 Stainless steel, DBSD46 Stainless steel, DBSD47 Stainless steel, DBSD48 Stainless steel, DBSD49 Stainless steel, DBSD50 Stainless steel, DBSD51 Stainless steel, DBSD52 Stainless steel, DBSD53 Stainless steel, DBSD54 Stainless steel, DBSD55 Stainless steel, DBSD56 Stainless steel, DBSD57 Stainless steel, DBSD58 Stainless steel, DBSD59 Stainless steel, DBSD60 Stainless steel, DBSD61 Stainless steel, DBSD62 Stainless steel, DBSD63 Stainless steel, DBSD64 Stainless steel, DBSD65 Stainless steel, DBSD66 Stainless steel, DBSD67 Stainless steel, DBSD68 Stainless steel, DBSD69 Stainless steel, DBSD70 Stainless steel, DBSD71 Stainless steel, DBSD72 Stainless steel, DBSD73 Stainless steel, DBSD74 Stainless steel, DBSD75 Stainless steel, DBSD76 Stainless steel, DBSD77 Stainless steel, DBSD78 Stainless steel, DBSD79 Stainless steel, DBSD80 Stainless steel, DBSD81 Stainless steel, DBSD82 Stainless steel, DBSD83 Stainless steel, DBSD84 Stainless steel, DBSD85 Stainless steel, DBSD86 Stainless steel, DBSD87 Stainless steel, DBSD88 Stainless steel, DBSD89 Stainless steel, DBSD90 Stainless steel, DBSD91 Stainless steel, DBSD92 Stainless steel, DBSD93 Stainless steel, DBSD94 Stainless steel, DBSD95 Stainless steel, DBSD96 Stainless steel, DBSD97 Stainless steel, DBSD98 Stainless steel, DBSD99 Stainless steel, DBSD100 Stainless steel.

Ordering Information

Accessories

External Glass Shield

Drilling

Mounting Slitter**

Photometric Diagram

Ordering Information

EXAMPLE: WDG2 LED P3 40K 80CRI VF MVOLT SRM DBX0

Order Code	Color	Mounting	Finish	Shipping
WDG2	P3	VF	DBX0	DBX0

Performance Data

Lumen Ambient Temperature (LAT) Multiplier

Electrical Load

Projected Lumen Maintenance

Ordering Information

EXAMPLE: WDG2 LED P3 40K 80CRI VF MVOLT SRM DBX0

Order Code	Color	Mounting	Finish	Shipping
WDG2	P3	VF	DBX0	DBX0

Performance Data

Lumen Output

Ordering Information

EXAMPLE: WDG2 LED P3 40K 80CRI VF MVOLT SRM DBX0

Order Code	Color	Mounting	Finish	Shipping
WDG2	P3	VF	DBX0	DBX0

WDGE2 LED Architectural Wall Sconce

Visual Comfort Optic

Specifications

Ordering Information

EXAMPLE: WDG2 LED P3 40K 80CRI VF MVOLT SRM DBX0

Order Code	Color	Mounting	Finish	Shipping
WDG2	P3	VF	DBX0	DBX0

TYPES PA, PB, PC & PD POLE TOP LUMINAIRES

TYPES WA, WB WALL MTD. LUMINAIRES



RICHARDSON
ENGINEERING
ELECT. ENGINEERS
345 JACOBSON ROAD
SANDPOINT, ID 83864
(208) 255-1600
rjrichpe@gmail.com

STATE OF CALIFORNIA
Outdoor Lighting
 NRCC-LTO-4 (Created 11/19)
 CERTIFICATE OF COMPLIANCE
 Project Name: REDROCK SELF STORAGE
 Project Address: 950 N FARRELL DRIVE, PALM SPRINGS, CA
 Report Page: Page 1 of 6
 Date Prepared: 2-7-2022

A. GENERAL INFORMATION

01 Project Location (city) PALM SPRINGS 04 Total Illuminated Hardscape Area (ft²) 78,088
 02 Climate Zone
 03 Outdoor Lighting Zone per Title 24, Part 1.5.10.5.1 or as designated by Authority Having Jurisdiction (AHJ):
 L2-G: Very Low - Undeveloped Parkland L2-7: Moderate - Rural Areas L2-4: High - Must be reviewed by CA Energy Commission for Approval
 L2-1: Low - Developed Parkland L2-3: Moderately High - Urban Areas

B. PROJECT SCOPE

Table Instructions: Indicate any outdoor lighting systems that are within the scope of the permit application and are demonstrating compliance using the prescriptive provisions outlined in Table 1 of Part 1.5.10.5.1 for all systems.
 My project consists of:
 New Lighting System Must Comply with Allowances from 1.10.1
 Altered Lighting System In your alteration increasing the connected lighting load (Watts)? Yes No
 FOOTNOTES: # of Existing Luminaires Being Altered (Use Table of Luminaires Being Altered / Existing Luminaires within the Scope of the Permit Application) x 100

C. COMPLIANCE RESULTS

Table Instructions: If any cell on this table says "DOES NOT COMPLY" or "COMPLIES with Exceptional Conditions" refer to Table D. For guidance.

Calculation of Total Allowed Lighting Power (Watts) §159.7 or §161.0(a)(1)										Compliance Results	
01	02	03	04	05	06	07	08	09	10	11	12
General Hardscape Allowance §161.0(a)(1) (See Table 1)	Area Application §161.0(a)(2) (See Table J)	Sales Frontage Allowance §161.0(a)(3) (See Table K)	Ornamental Allowance §161.0(a)(4) (See Table L)	Per Application Allowance §161.0(a)(5) (See Table M)	Per Specific Area Allowance §161.0(a)(6) (See Table N)	Total Allowed (Watts)	Total Actual (Watts)	Compliance	Compliance	Pass	Fail
3,053.45	*	*	*	*	3,053.45	2	3,568.4	COMPLIES	COMPLIES	<input type="checkbox"/>	<input type="checkbox"/>
Cutoff Compliance (See Table G for Details)										COMPLIES	
Controls Compliance (See Table H for Details)										COMPLIES	

CA Building Energy Efficiency Standards - 2019 Nonresidential Compliance: <https://www.energy.ca.gov/title24/2019/title24.html> November 2019

STATE OF CALIFORNIA
Outdoor Lighting
 NRCC-LTO-4 (Created 11/19)
 CERTIFICATE OF COMPLIANCE
 Project Name: REDROCK SELF STORAGE
 Project Address: 950 N FARRELL DRIVE, PALM SPRINGS, CA
 Report Page: Page 2 of 6
 Date Prepared: 2-7-2022

D. EXCEPTIONAL CONDITIONS

This table is auto-filled with uneditable comments because of selections made or data entered in tables throughout the form.
 No exceptional conditions apply to this project.

E. ADDITIONAL REMARKS

This table includes remarks made by the permit applicant to the Authority Having Jurisdiction.

F. OUTDOOR LIGHTING FIXTURE SCHEDULE

Table Instructions: For new or altered lighting systems demonstrating compliance with 1.10.1.1 (a) Table F has expanded for input, include all luminaires being installed and any existing luminaires remaining or being moved within the spaces covered by the permit application in the Table below. For altered lighting systems using the Existing Power method per 1.10.1.1.1 (a) Table F has expanded for input, include only new luminaires being installed and replacement luminaires being installed as part of the project scope (i.e., do not include existing luminaires remaining or existing luminaires being moved).

01	02	03	04	05	06	07	08	09	10
Name of Item Tag	Condition Luminaires Description	Watts per luminaire(s)	How Wattage is Determined	Total Number of Luminaires	Luminaire Status*	Excluded per 1.10.1.1.1	Design Watts	Cutoff Req. 2 (2,000 initial lumen output, §161.0(a)(1))	Field Inspector Pass/Fail
PA	LED Pole Mid FCO	Linear	38 Mfr. Spec	3	New	<input type="checkbox"/>	114	NA: <= 200 lumens	<input type="checkbox"/>
PB	LED Pole Mid FCO	Linear	71 Mfr. Spec	3	New	<input type="checkbox"/>	213	NA: <= 200 lumens	<input type="checkbox"/>
PC	LED Pole Mid FCO	Linear	38 Mfr. Spec	3	New	<input type="checkbox"/>	114	NA: <= 200 lumens	<input type="checkbox"/>
PD	LED Pole Mid FCO	Linear	38 Mfr. Spec	1	New	<input type="checkbox"/>	38	NA: <= 200 lumens	<input type="checkbox"/>
WA	LED Wall Mid FCO	Linear	32.1 Mfr. Spec	46	New	<input type="checkbox"/>	1,476.6	NA: <= 200 lumens	<input type="checkbox"/>
WB	LED Wall Mid FCO	Linear	46.7 Mfr. Spec	4	New	<input type="checkbox"/>	186.8	NA: <= 200 lumens	<input type="checkbox"/>
							Total Design Watts:	2,568.4	

* NOTES: Selections with a * require a note in the space below explaining how compliance is achieved.
 0 Luminaire is lighting a statue; EXCEPTION 2 to 1.10.1.1.1

CA Building Energy Efficiency Standards - 2019 Nonresidential Compliance: <https://www.energy.ca.gov/title24/2019/title24.html> November 2019

STATE OF CALIFORNIA
Outdoor Lighting
 NRCC-LTO-4 (Created 11/19)
 CERTIFICATE OF COMPLIANCE
 Project Name: REDROCK SELF STORAGE
 Project Address: 950 N FARRELL DRIVE, PALM SPRINGS, CA
 Report Page: Page 3 of 6
 Date Prepared: 2-7-2022

G. CUTOFF REQUIREMENTS (BUG)

Table Instructions: Complete this table for fixtures of ≥ 2,000 initial lumen lumens indicated on Table F as needed to comply with Cutoff Requirements. Maximum lumens can be found in Table 24, Part 1.2, Section 3.106.6.

01	02	03	Backlight Rating*		Uplight Rating*		Glare Rating*		Field Inspector			
			Mounting Height from Property Line ¹	Max Allowable Backlight Rating ²	Lighting Type	Max Allowable Backlight Rating ²	Uplight Rating ³	Mounting Height from Property Line ¹	Max Allowable Glare Rating ⁴	Glare Rating ⁴	Pass	Fail
PB	LED Pole Mid	Back hemisphere L-2 Mt from prop line	B4	B2	Area Lighting	L0	L0	> 2 Mt from property line	G3	G2	<input type="checkbox"/>	<input type="checkbox"/>

FOOTNOTES: Mounting Height is labeled Mt in this table.
 * Authority having jurisdiction may ask for luminaire cut sheets to confirm wattage used for compliance per §161.0(a)(1).
¹ For linear luminaires, wattage should be indicated as W/ft instead of Watts/luminaire. Total linear feet for the luminaire should be indicated in column 05 instead of number of luminaires.
² Select "New" for new luminaires in a new outdoor lighting project or for added luminaires in an alteration. Select "Altered" for replacement luminaires in an alteration. Select "Existing to Remain" for existing luminaires within the project scope that are not being altered and are remaining. Select "Existing Reinstated" for existing luminaires which are being removed and reinstated as part of the project scope.
³ Compliance with mandatory cutoff requirements is required for luminaires with initial lumen output ≥ 6,000 unless exempted by §161.0(a)(1).
⁴ Glare Rating is based on the luminaire's beam spread and mounting height.

H. OUTDOOR LIGHTING CONTROLS

Table Instructions: Complete this table demonstrating compliance with controls requirements for all new or altered luminaires installed as part of the permit application. For alteration projects, luminaires which are existing to remain (i.e. unaltered) and luminaires which are removed and reinstated (renewal only) do not need to be included in this table even if they are within the spaces covered by the permit application.
 * When an option having a * is selected, the section of the table must be completed. The lighting controls section of the Compliance Summary Table in the first page will show "DOES NOT COMPLY" if the notes are left blank. For each requirement in columns 02 through 04, do not leave the field blank, instead input NA or Exempt* from the inspection list to indicate not applicable or an exemption.

Mandatory Controls:
 Table Continued

CA Building Energy Efficiency Standards - 2019 Nonresidential Compliance: <https://www.energy.ca.gov/title24/2019/title24.html> November 2019

STATE OF CALIFORNIA
Outdoor Lighting
 NRCC-LTO-4 (Created 11/19)
 CERTIFICATE OF COMPLIANCE
 Project Name: REDROCK SELF STORAGE
 Project Address: 950 N FARRELL DRIVE, PALM SPRINGS, CA
 Report Page: Page 4 of 6
 Date Prepared: 2-7-2022

01	02	03	04	05
Area Description	Shut Off §130.2(a)(1)	Auto-Schedule §130.2(a)(2)	Motion Sensor §130.2(a)(3)	Field Inspector
GENERAL HARDSCAPE	Astronomical Timer	Yes	NA: Wall ≤ 24ft	Pass <input type="checkbox"/> Fail <input type="checkbox"/>

*NOTES: Controls with a * require a note in the space below explaining how compliance is achieved.
 02: Not permitted by health & safety to be turned off; EXCEPTION 1 to §130.2(a)

I. LIGHTING POWER ALLOWANCE (per 1.10.1.1)

Table Instructions: Please complete this table for areas using the allowance calculations per 1.10.1.1. General Hardscape Allowance is per Table 1.06.1.3 while "Use it or lose it" Allowances are per Table 1.06.1.4. Indicate which allowances are being used in regard sections for user input. Luminaires that qualify for one of the "Use it or lose it" allowances shall not qualify for another. Use if or lose it allowance.

General Hardscape Allowance										"Use it or lose it" Allowances (select all that apply)	
01	02	03	04	05	06	07	08	09	10	11	12
Area Description	Surface Type	Illuminated Area (ft ²)	Area Wattage Allowance (W/ft ²)	Perimeter Length (ft)	Allowed Density (W/ft)	Linear Allowance (Watts)	Perimeter Length (ft)	Allowed Density (W/ft)	Linear Allowance (Watts)	Total General AWA + LWA (Watts)	Compliance
GENERAL HARDSCAPE	Asphalt	78,088	0.025	1,952.2	3,705	0.25	751.2	2,703.45		350	3,053.45
Initial Wattage Allowance for Entire Site (Watts):										350	
Total General Hardscape Allowance (Watts):										3,053.45	

J. LIGHTING ALLOWANCE: PER APPLICATION
 This Section Does Not Apply

K. LIGHTING ALLOWANCE: SALES FRONTAGE
 This Section Does Not Apply

CA Building Energy Efficiency Standards - 2019 Nonresidential Compliance: <https://www.energy.ca.gov/title24/2019/title24.html> November 2019

STATE OF CALIFORNIA
Outdoor Lighting
 NRCC-LTO-4 (Created 11/19)
 CERTIFICATE OF COMPLIANCE
 Project Name: REDROCK SELF STORAGE
 Project Address: 950 N FARRELL DRIVE, PALM SPRINGS, CA
 Report Page: Page 5 of 6
 Date Prepared: 2-7-2022

L. LIGHTING ALLOWANCE: ORNAMENTAL
 This Section Does Not Apply

M. LIGHTING ALLOWANCE: PER SPECIFIC AREA
 This Section Does Not Apply

N. EXISTING CONDITIONS POWER ALLOWANCE (alterations only)
 This Section Does Not Apply

O. DECLARATION OF REQUIRED CERTIFICATES OF INSTALLATION

Table Instructions: Selections have been made based on information provided in previous tables of this document. If any selection needs to be changed, please explain why in Table E. Additional Remarks. These documents must be provided to the building inspector during construction and can be found online at: <http://www.energy.ca.gov/title24/2019/title24.html>

YES	NO	Form/Title	Field Inspector	
<input type="checkbox"/>	<input type="checkbox"/>		Pass	Fail
<input checked="" type="checkbox"/>	<input type="checkbox"/>	NRCC-LTO-01-E - Must be submitted for all buildings.	<input type="checkbox"/>	<input type="checkbox"/>
<input checked="" type="checkbox"/>	<input type="checkbox"/>	NRCC-LTO-02-E - Must be submitted for a lighting control system or for an Energy Management Control System (EMCS), to be recognized for compliance.	<input type="checkbox"/>	<input type="checkbox"/>

P. DECLARATION OF REQUIRED CERTIFICATES OF ACCEPTANCE

Table Instructions: Selections have been made based on information provided in previous tables of this document. If any selection needs to be changed, please explain why in Table E. Additional Remarks. These documents must be provided to the building inspector during construction and must be completed through an Acceptance Test Technician Certification Provider (ATTCP). For more information visit: <http://www.energy.ca.gov/title24/2019/title24.html>

YES	NO	Form/Title	Field Inspector	
<input type="checkbox"/>	<input type="checkbox"/>		Pass	Fail
<input checked="" type="checkbox"/>	<input type="checkbox"/>	NRCC-LTO-02-A - Must be submitted for all outdoor lighting controls except for alterations where controls area added to ≤ 20 luminaires.	<input type="checkbox"/>	<input type="checkbox"/>

CA Building Energy Efficiency Standards - 2019 Nonresidential Compliance: <https://www.energy.ca.gov/title24/2019/title24.html> November 2019

STATE OF CALIFORNIA
Outdoor Lighting
 NRCC-LTO-4 (Created 11/19)
 CERTIFICATE OF COMPLIANCE
 Project Name: REDROCK SELF STORAGE
 Project Address: 950 N FARRELL DRIVE, PALM SPRINGS, CA
 Report Page: Page 6 of 6
 Date Prepared: 2-7-2022

DOCUMENTATION AUTHOR'S DECLARATION STATEMENT

I certify that this Certificate of Compliance documentation is accurate and complete.

Documentation Author Name: Michael J Richardson
 Documentation Author Signature: *Michael J Richardson*
 Company: Richardson Engineering
 Signature Date: 2-7-2022
 Address: 345 Jacobson Road
 City/State/Zip: Sandpoint / ID / 83864
 Phone: 208-255-1600

RESPONSIBLE PERSON'S DECLARATION STATEMENT

I certify the following under penalty of perjury, under the laws of the State of California:

- The information provided on this Certificate of Compliance is true and correct.
- I am eligible under Division 3 of the Business and Professions Code to accept responsibility for the building design or system design identified on this Certificate of Compliance (responsible designer).
- The energy features and performance specifications, materials, components, and manufacture devices for the building design or system design identified on this Certificate of Compliance conform to the requirements of Title 24, Part 1 and Part 6 of the California Code of Regulations.
- The building design features or system design features identified on this Certificate of Compliance are consistent with the information provided on other applicable compliance documents, worksheets, calculations, plans and specifications submitted to the enforcement agency for approval with this building permit application.
- I will ensure that a completed signed copy of this Certificate of Compliance shall be made available with the building permit(s) issued for the building, and made available to the enforcement agency for all applicable inspections. I understand that a completed signed copy of this Certificate of Compliance is required to be included with the documentation the builder provides to the building owner at occupancy.

Responsible Designer Name: Michael J Richardson
 Responsible Designer Signature: *Michael J Richardson*
 Company: Richardson Engineering
 Date Signed: 2-7-2022
 Address: 345 Jacobson Road
 City/State/Zip: Sandpoint / ID / 83864
 Phone: 208-255-1600

CA Building Energy Efficiency Standards - 2019 Nonresidential Compliance: <https://www.energy.ca.gov/title24/2019/title24.html> November 2019



950 N. FARRELL DRIVE
 PALM SPRINGS, CA

SITE LIGHTING - TITLE 24 & GREEN CODE COMPLIANCE
 NO SCALE



REVIEWED 02/07/2022
 RICHARDSON
 ENGINEERING
 ELECT. ENGINEERS
 345 JACOBSON ROAD
 SANDPOINT, ID 83864
 (208) 255-1600
 mjricep@gmail.com

SHEET 13



STUDIO
 architecture + engineering
 23 ORCHARD ROAD, SUITE 200
 LAKE FOREST, CA 92630
 T 949.380.3970 F 949.380.3771

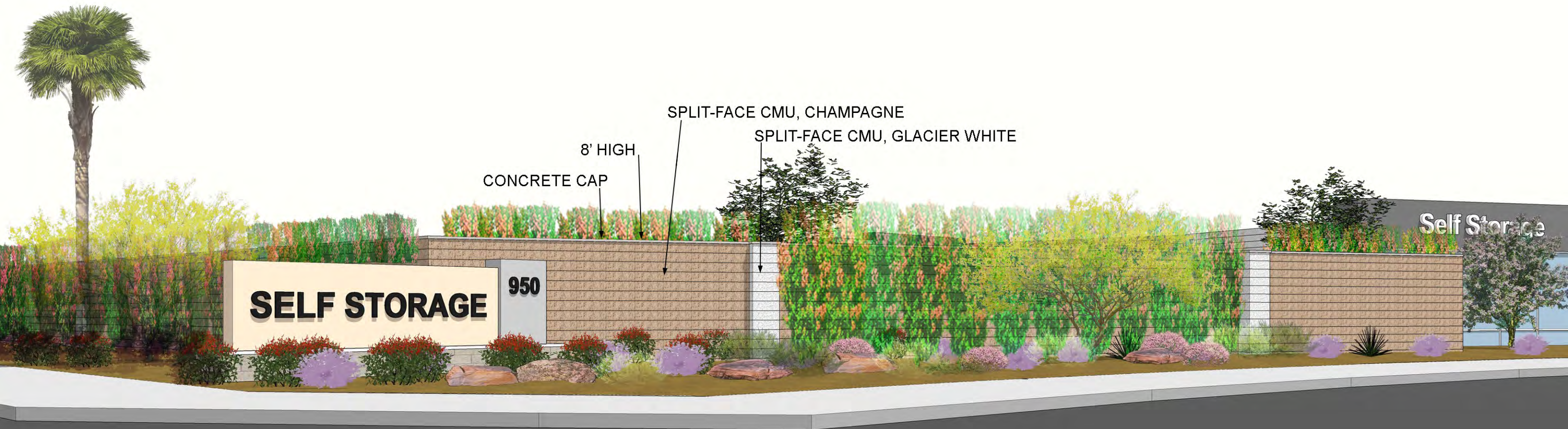


VIEW 1 - ACCESS GATE



VIEW 2 - ACCESS GATE



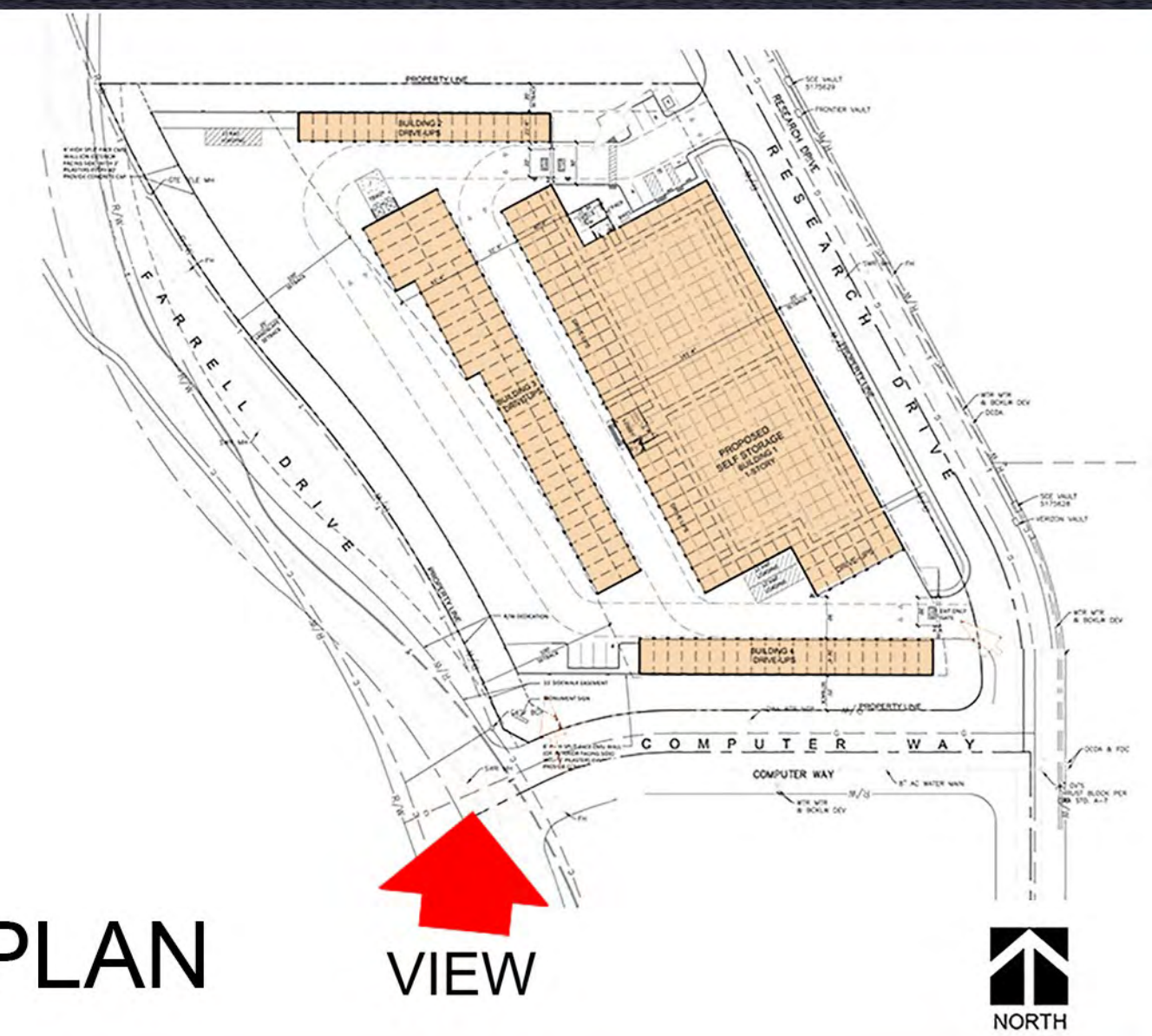


VIEW - 8 FEET HIGH SPLIT FACE CMU WALL





VIEW FROM FARRELL DRIVE AND COMPUTER WAY LOOKING NORTH



KEY PLAN

VIEW



RED ROCK

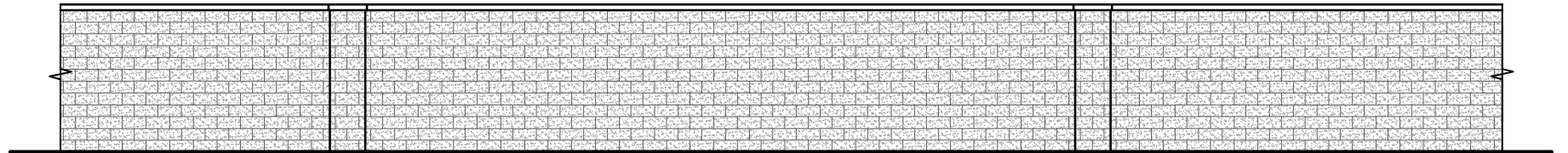
950 N. FARRELL DRIVE
PALM SPRINGS, CA

PERSPECTIVE VIEW
05.31.22

KSP
STUDIO
architecture + engineering
23 ORCHARD ROAD, SUITE 200
LAKE FOREST, CA 92630
T 949.380.3970 F 949.380.3771



PRECISION 10\"X4\"X16\"
ANGELUS BLOCK
CHAMPAGNE



8' HIGH SPLIT-FACE ON EXTERIOR SIDE
WITH 2' SPLIT-FACE PILASTERS EVERY 40'
WITH CONCRETE CAP



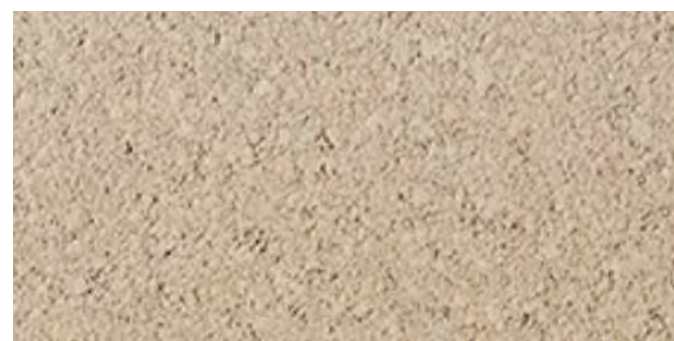
SPLIT-FACE CMU BLOCK
(ON EXTERIOR SIDE)
ANGELUS BLOCK
GLACIER WHITE



PRECISION CMU BLOCK
ANGELUS BLOCK
GLACIER WHITE



SPLIT-FACE CMU BLOCK
(ON EXTERIOR SIDE)
ANGELUS BLOCK
CHAMPAGNE



PRECISION CMU BLOCK
(ON EXTERIOR SIDE)
ANGELUS BLOCK
CHAMPAGNE