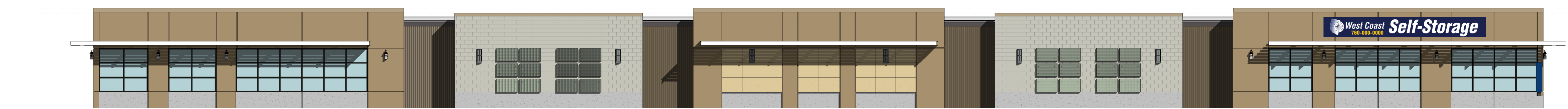


T.O. HIGH PARAPET 16' - 8"  
 T.O. LOW PARAPET 14' - 4"  
 ROOF 10' - 0"

LEVEL 01  
 0' - 0"

**1 OVERALL SOUTH ELEVATION**  
 3/32" = 1'-0"



T.O. HIGH PARAPET 16' - 8"  
 T.O. MID PARAPET 15' - 10"  
 T.O. LOW PARAPET 14' - 4"

LEVEL 01  
 0' - 0"

**2 OVERALL WEST ELEVATION**  
 3/32" = 1'-0"



T.O. LOW PARAPET 14' - 4"  
 T.O. LOW PARAPET 2 13' - 4"

LEVEL 01  
 0' - 0"

**3 OVERALL EAST ELEVATION**  
 3/32" = 1'-0"



T.O. HIGH PARAPET 16' - 8"  
 T.O. MID PARAPET 15' - 10"  
 T.O. LOW PARAPET 14' - 4"

LEVEL 01  
 0' - 0"

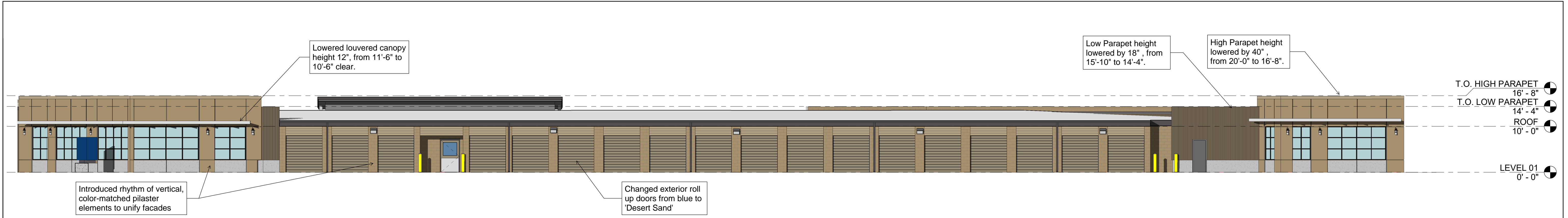
**4 OVERALL NORTH ELEVATION**  
 3/32" = 1'-0"

DATE	NO.	DESCRIPTION
2022-06-23		ISSUE FOR ARG #2

PROJECT NO.: 21059.00  
 PROJECT MGR.: DYM  
 DRAWN BY: DYM / MT  
 CHECKED BY: TB

OVERALL EXTERIOR  
 ELEVATIONS

**A3.03**



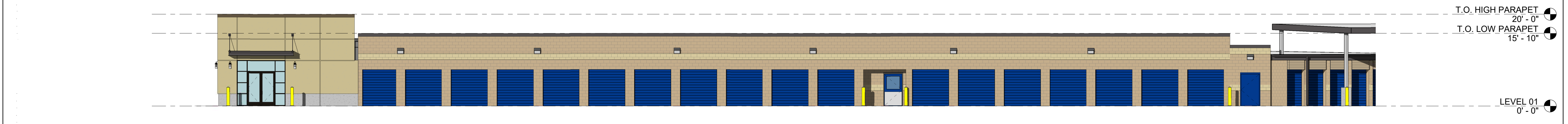
**1 OVERALL SOUTH ELEVATION**  
3/32" = 1'-0"



**1 OVERALL SOUTH ELEVATION 1ST ARC SUBMISSION**  
3/32" = 1'-0"



**3 OVERALL EAST ELEVATION**  
3/32" = 1'-0"



**3 OVERALL EAST ELEVATION 1ST ARC SUBMISSION**  
3/32" = 1'-0"

DATE	NO.	DESCRIPTION
2022-06-23	1	ISSUE FOR ARC #2

PROJECT NO.: 21059.00  
PROJECT MGR.: DYM  
DRAWN BY: DYM / MT  
CHECKED BY: TB

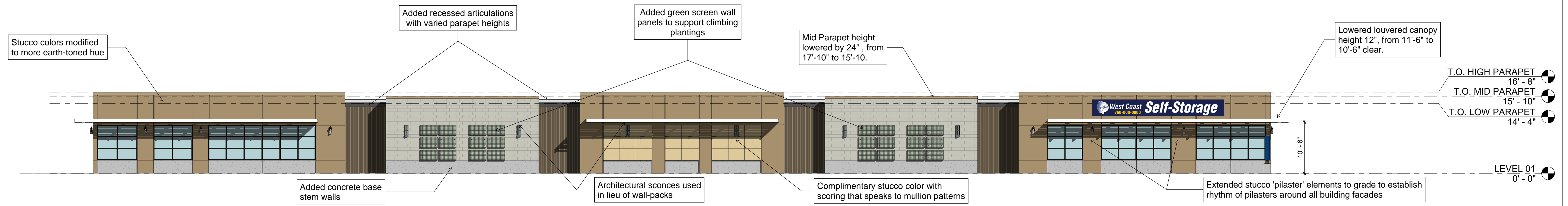
COMPARISON ELEVATIONS  
SOUTH AND EAST

**A3.04**

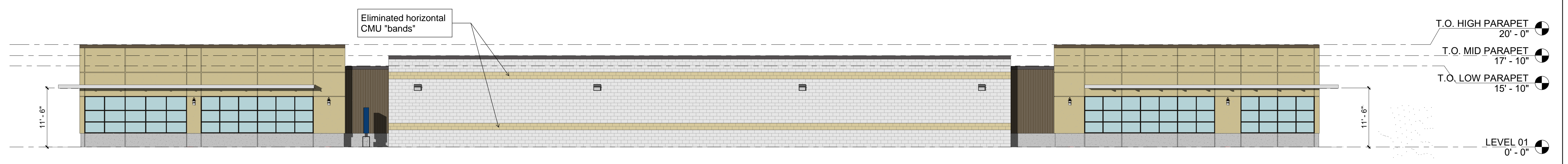
DATE	NO.	DESCRIPTION
2022-06-22		ISSUE FOR ARC #2

PROJECT NO.: 21059.00  
 PROJECT MGR.: DYM  
 DRAWN BY: DYM / MT  
 CHECKED BY: TB

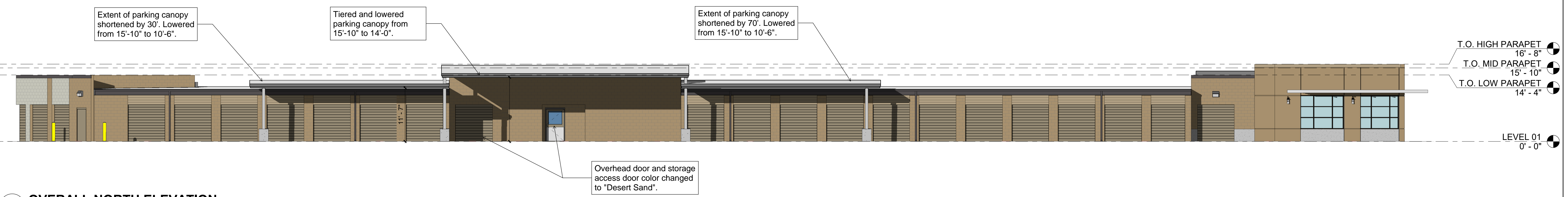
COMPARISON ELEVATIONS  
 NORTH AND WEST



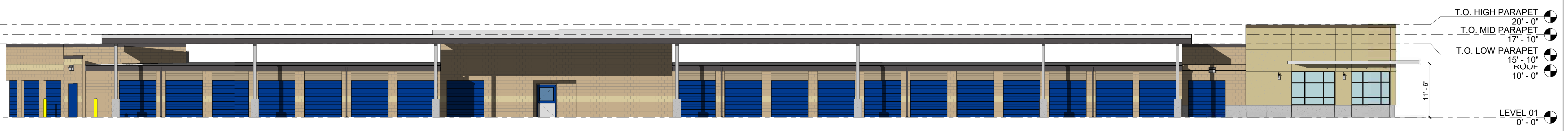
**2 OVERALL WEST ELEVATION**  
 3/32" = 1'-0"



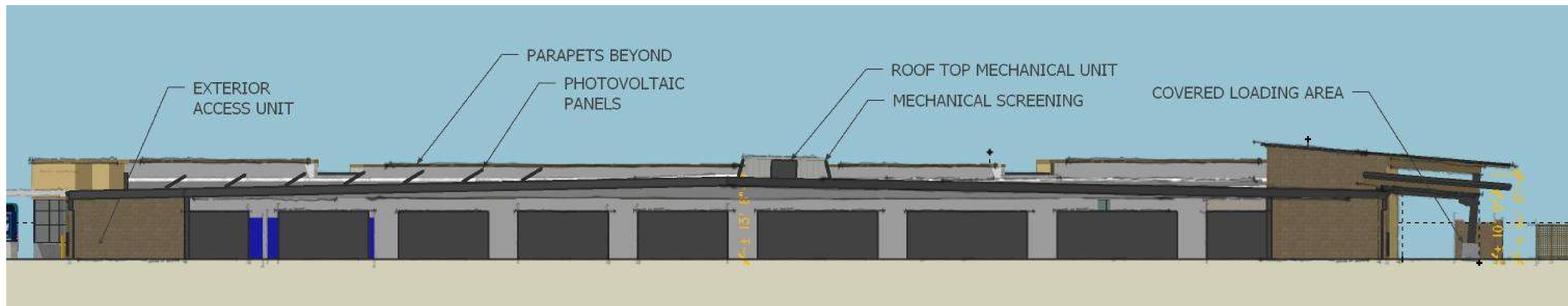
**2 OVERALL WEST ELEVATION 1ST ARC SUBMISSION**  
 3/32" = 1'-0"



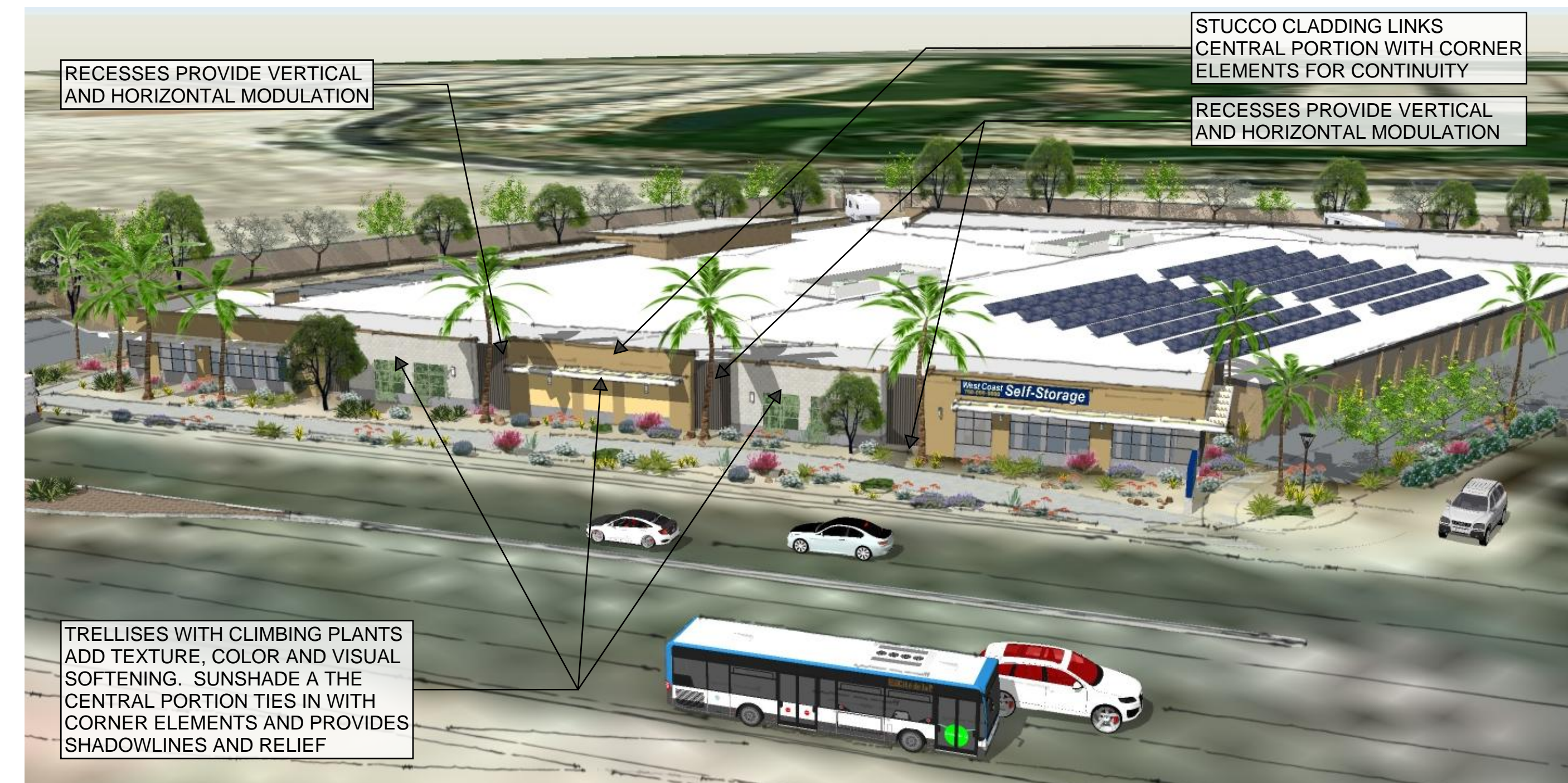
**4 OVERALL NORTH ELEVATION**  
 3/32" = 1'-0"



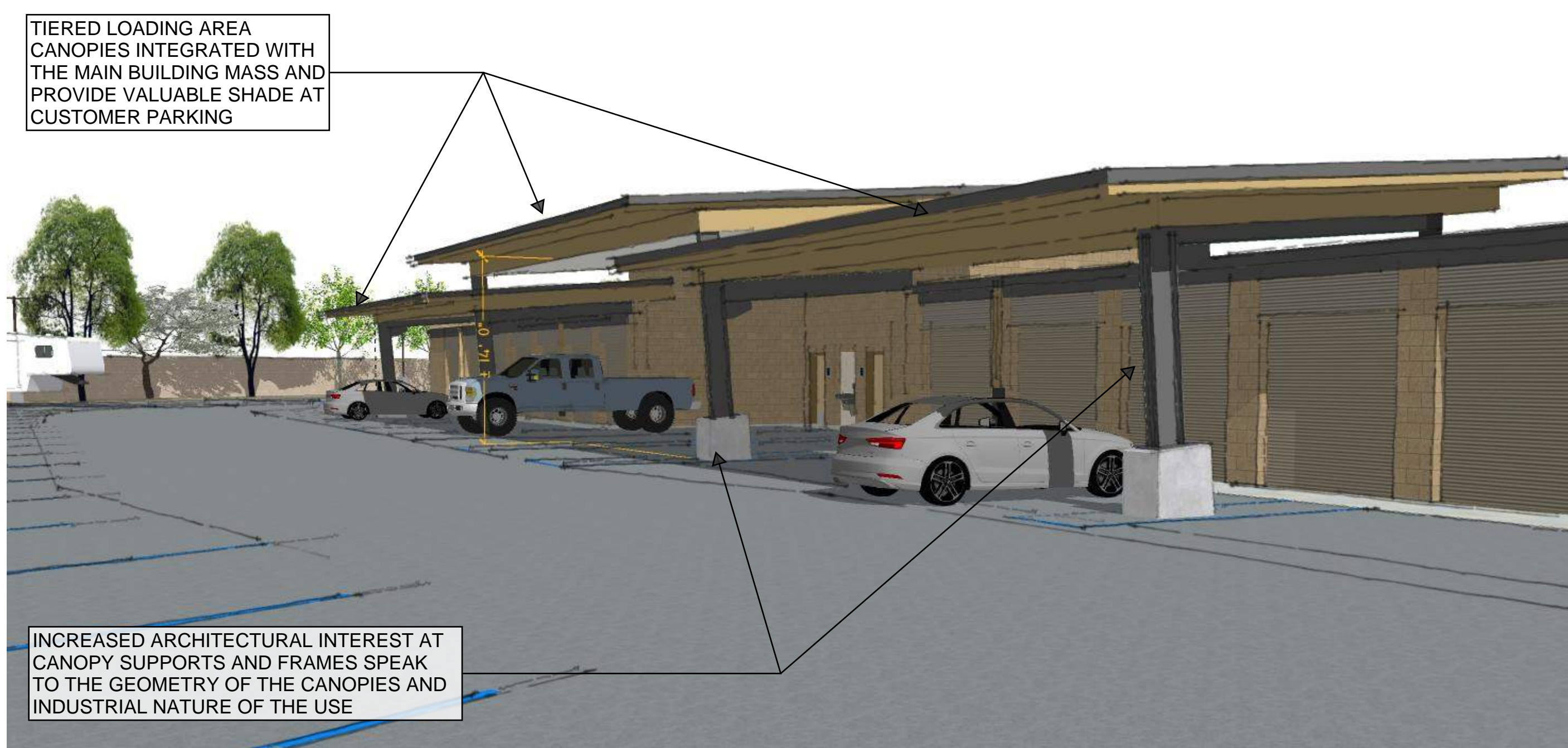
**4 OVERALL - NORTH ELEVATION 1ST ARC SUBMISSION**  
 3/32" = 1'-0"



**SCHEMATIC BUILDING SECTION A-A**  
NOT TO SCALE



**AERIAL PERSPECTIVE LOOKING WEST FROM NORTH GENE AUTRY TRAIL**



**PERSPECTIVE AT COVERED LOADING & PARKING AREA**



**PERSPECTIVE LOOKING NORTHEAST FROM CORNER OF TAMARISK ROAD & NORTH GENE AUTRY TRAIL**

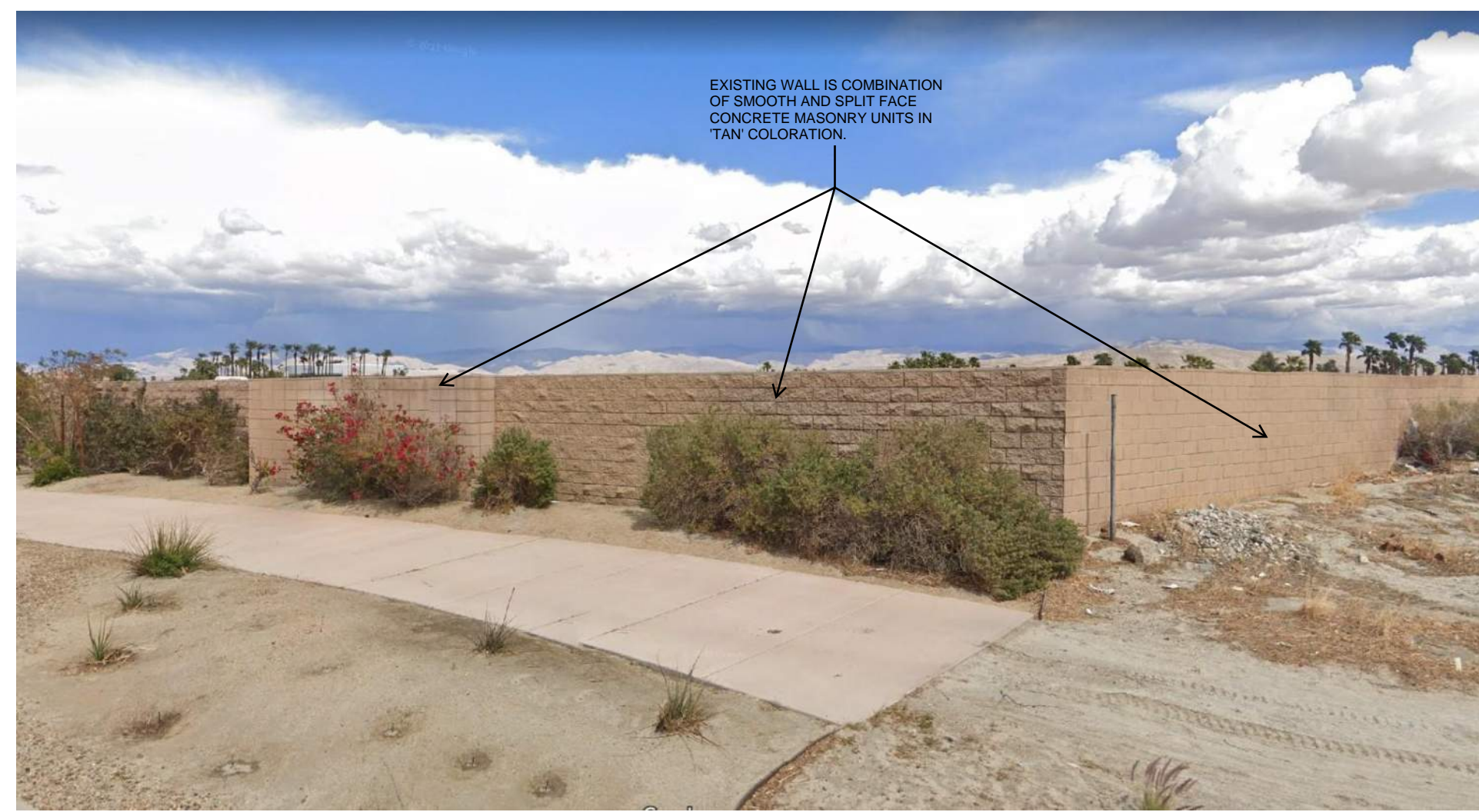


**PERSPECTIVE LOOKING SOUTHEAST FROM GENE AUTRY TRAIL AT DRIVEWAY**

DATE	NO.	DESCRIPTION
2022-06-22	ISSUE FOR ARG #2	

PROJECT NO.: 21059.00  
PROJECT MGR.: DYM  
DRAWN BY: DYM / MT  
CHECKED BY: TB

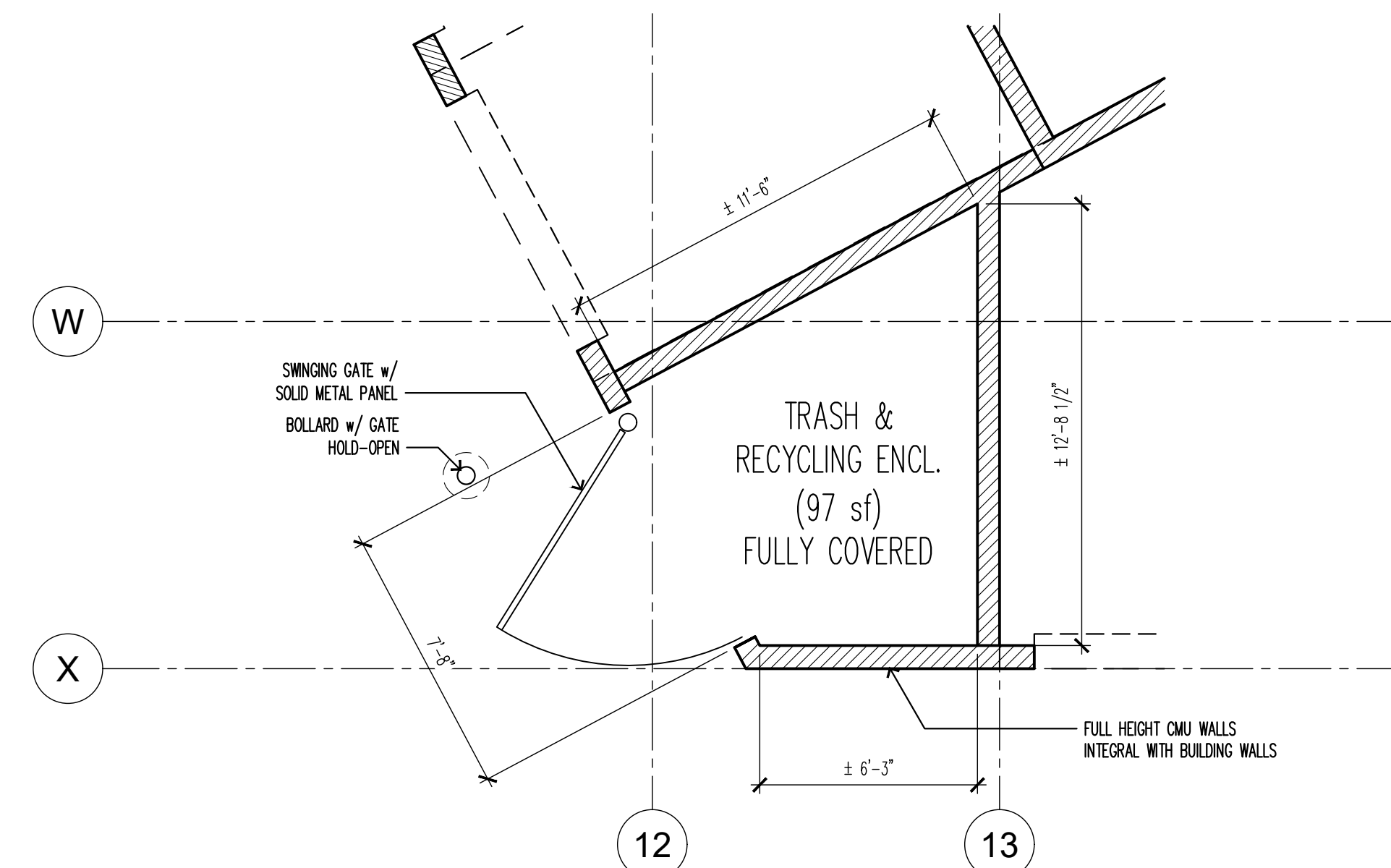
RENDERINGS & SCHEMATIC  
BUILDING SECTION



**EXISTING MASONRY SITE WALL**  
PROPOSED TO REMAIN



**AERIAL PERSPECTIVE LOOKING NORTH**



**ENLARGED TRASH ENCLOSURE PLAN**  
SCALE: 1/4" = 1'-0"



**PERSPECTIVE LOOKING WEST**



**TRELLISES AND PLANTINGS ALONG WEST FACADE**



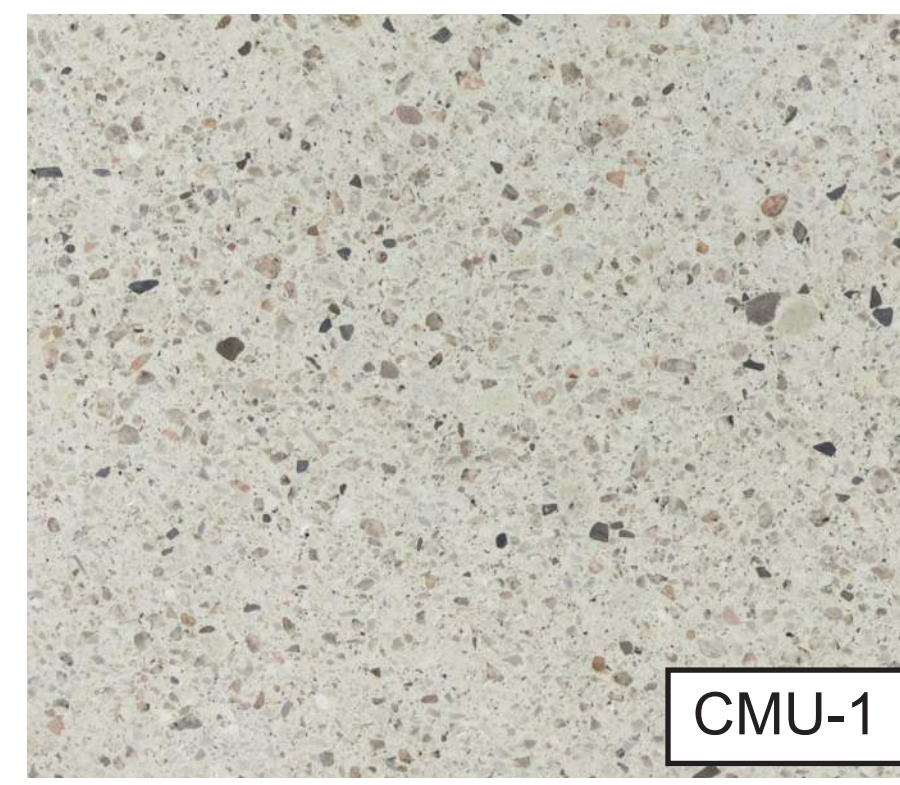
**PERSPECTIVE LOOKING NORTHWEST FROM ACCESS EASEMENT**

DATE	NO.	DESCRIPTION
2022-06-23	ISSUE FOR ARC #2	

PROJECT NO.: 21059.00  
PROJECT MGR.: DYM  
DRAWN BY: DYM / MT  
CHECKED BY: TB

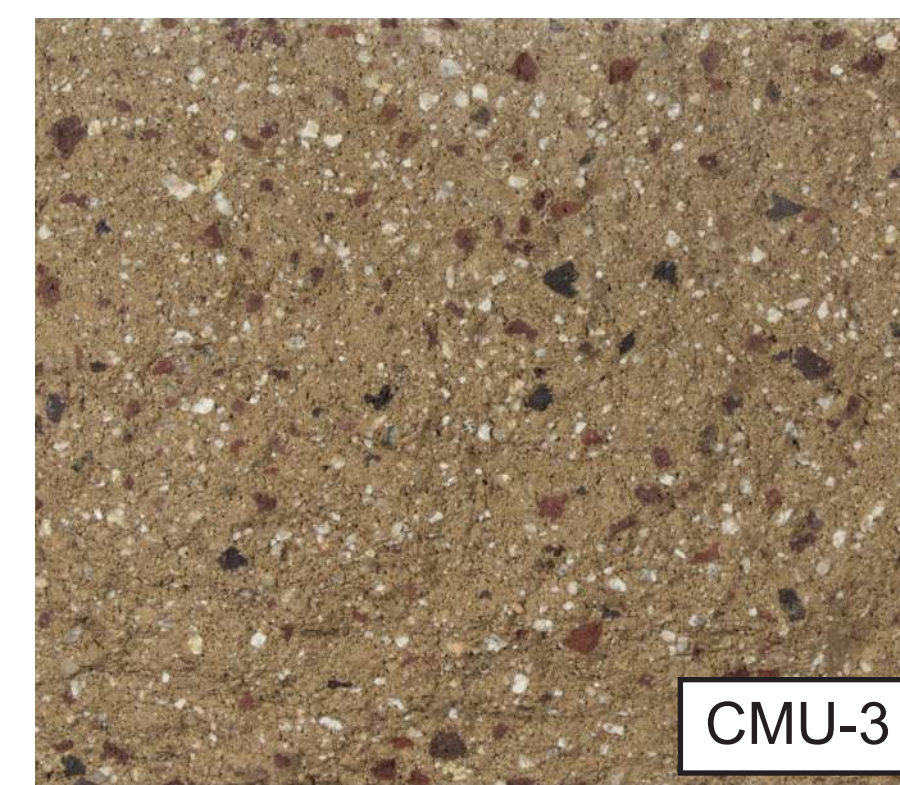
RENDERINGS

**A3.11**



CMU-1

**MATERIAL:** CMU  
**COLOR:** WHITE MW  
**TEXTURE:** BURNISHED FACE



CMU-3

**MATERIAL:** CMU  
**COLOR:** BROWN MW  
**TEXTURE:** BURNISHED FACE



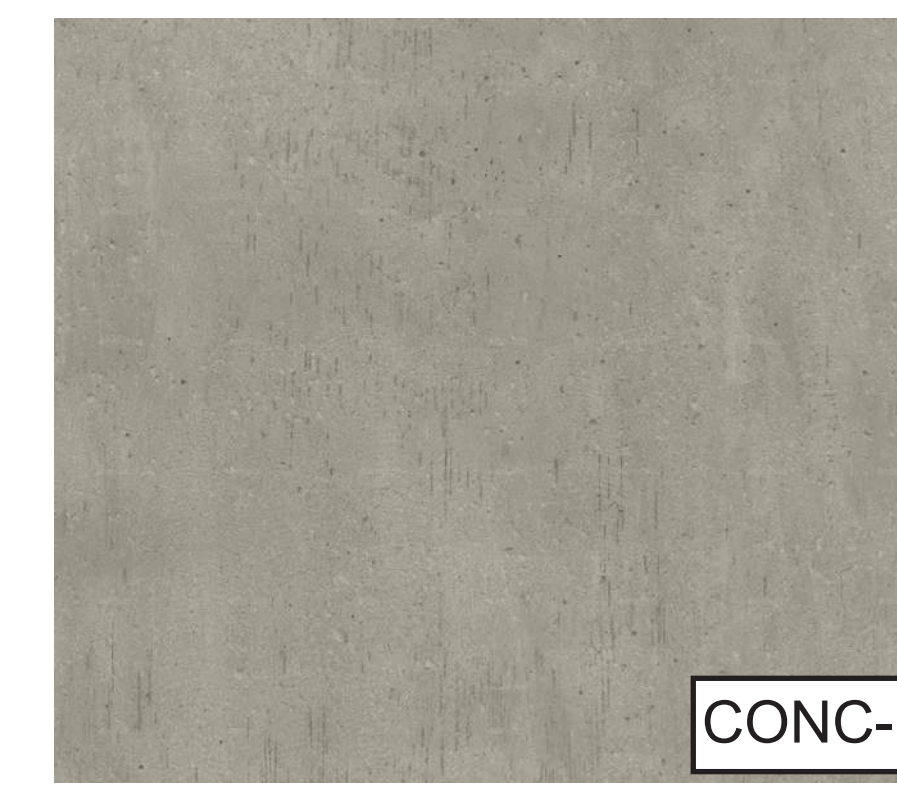
STUC-1

**MATERIAL:** STUCCO  
**COLOR:** LION'S MANE  
**TEXTURE:** FINE FINISH



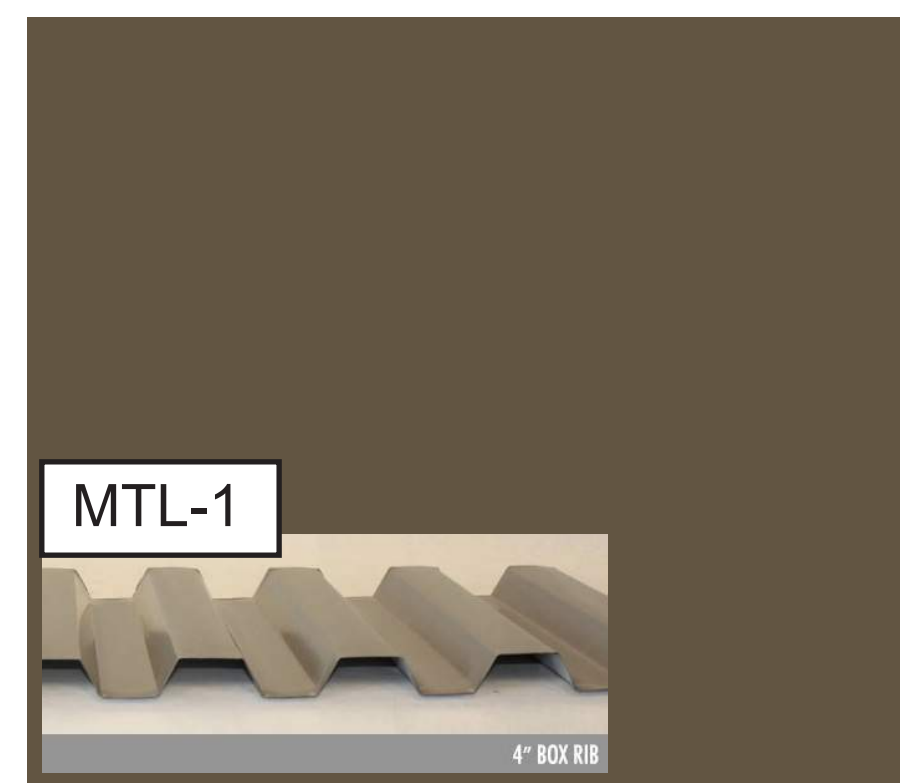
STUC-2

**MATERIAL:** STUCCO  
**COLOR:** RAW HIDE  
**TEXTURE:** FINE FINISH



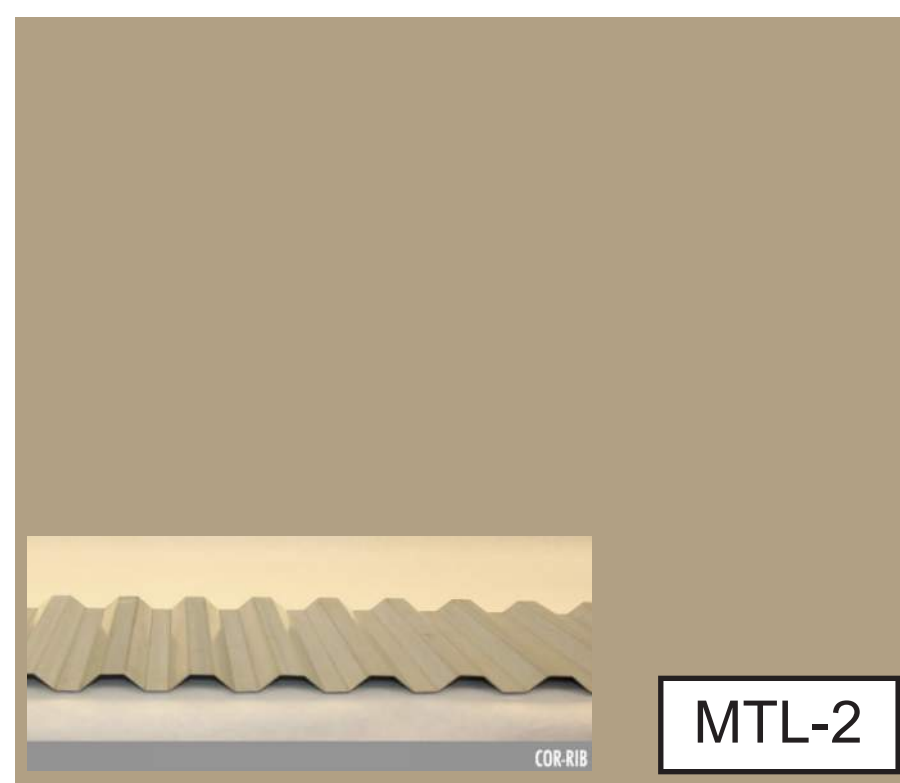
CONC-1

**MATERIAL:** CIP CONCRETE  
**COLOR:** NATURAL  
**TEXTURE:** SMOOTH FINISH



MTL-1

**MATERIAL:** METAL PANEL  
**COLOR:** MEDIUM BRONZE



MTL-2

**MATERIAL:** METAL PANEL  
**COLOR:** SIERRA TAN



MTL-4  
 MTL-3

**MATERIAL:** METAL PANEL  
**COLOR:** MEDIUM BRONZE



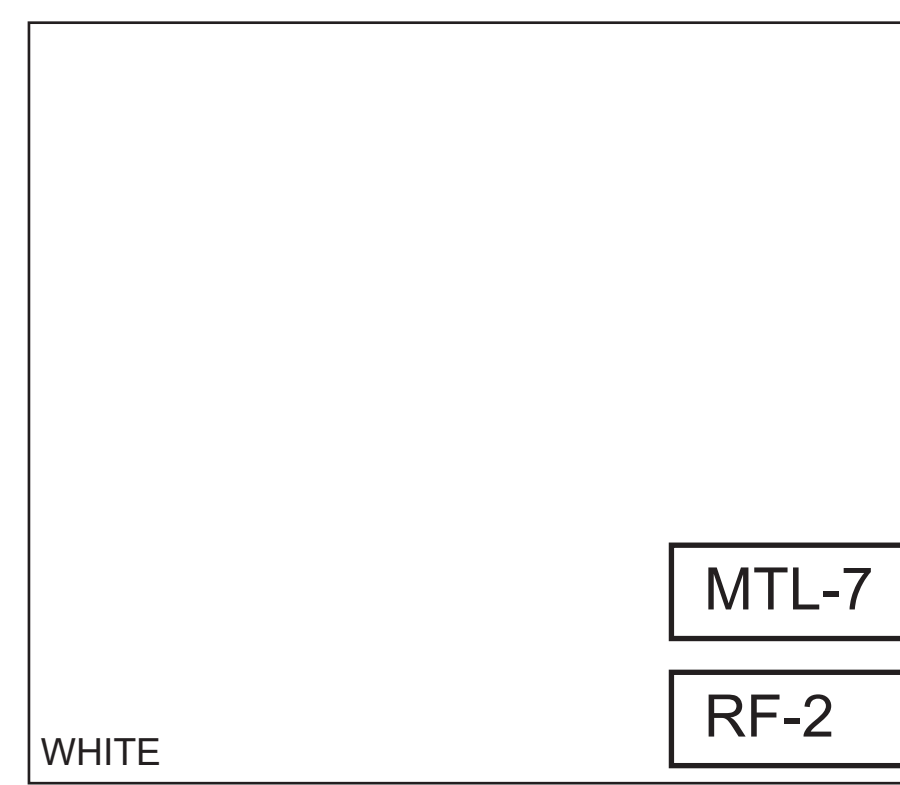
MTL-5

**MATERIAL:** METAL PANEL  
**COLOR:** GRAPHITE



MTL-6

**MATERIAL:** METAL PANEL DOOR  
**COLOR:** JANUS DESERT SAND



MTL-7

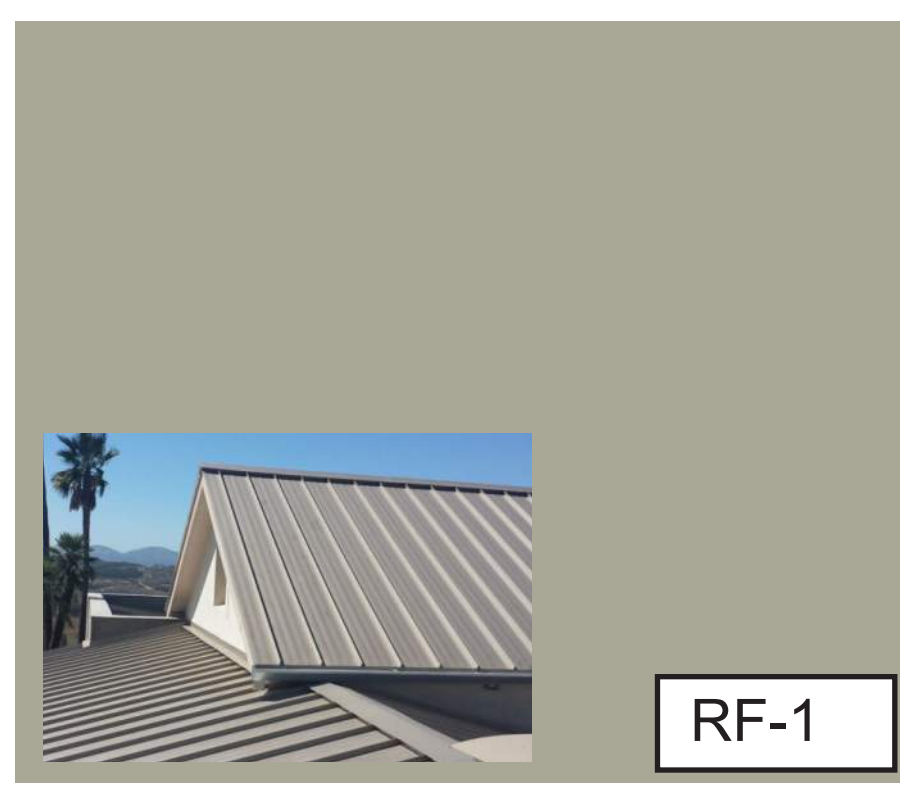
RF-2

**MATERIAL:** VARIES  
**COLOR:** WHITE



SF-1

**MATERIAL:** ALUM. STOREFRONT  
**COLOR:** MEDIUM BRONZE (KAWNEER)  
**FINISH:** ANODIZED



RF-1

**MATERIAL:** STANDING SEAM  
**COLOR:** PARCHMENT  
**FINISH:** PVDF

EXTERIOR FINISH SCHEDULE				
I.D.	DESCRIPTION	COLOR (MANUF.)	PATTERN or ORIENTATION	FINISH
CMU-1	BURNISHED FACE CMU BLOCK	WHITE MW (ORCO)	RUNNING BOND	CLEAR BLOCK SEALER
CMU-2	SPLIT FACE CMU BLOCK	BROWN MW (ORCO)	RUNNING BOND	CLEAR BLOCK SEALER
CMU-3	BURNISHED FACE CMU BLOCK	BROWN MW (ORCO)	RUNNING BOND	CLEAR BLOCK SEALER
STUC-1	CEMENT PLASTER STUCCO	LION'S MANE (SENERGY)	FINE TEXTURE	---
STUC-2	CEMENT PLASTER STUCCO	RAW HIDE (SENERGY)	FINE TEXTURE	---
CONC-1	CAST-IN-PLACE CONCRETE WALL	NATURAL	SMOOTH FINISH; REVEALS PER ELEVATIONS	CTS WUNDERFIXX SMOOTHING & PATCHING COMPOUND
MTL-1	'4-INCH BOX RIB' ARCHITECTURAL METAL PANEL (CORRUGATED METALS, INC.)	MEDIUM BRONZE (CMI)	VERTICAL	FACTORY APPLIED
MTL-2	'COR-RIB' ARCHITECTURAL METAL PANEL (CORRUGATED METALS, INC.)	SIERRA TAN (CMI)	HORIZONTAL	FACTORY APPLIED
MTL-3	METAL ARCHITECTURAL ELEMENTS & TRIM; CANOPY, GUTTERS & DOWNSPOUTS, ETC.	MEDIUM BRONZE	---	FACTORY APPLIED (or) PRIMED & PAINTED
MTL-4	COPINGS	SIERRA TAN (PAC-CLAD)	---	FACTORY APPLIED
MTL-5	COPINGS	GRAPHITE (PAC-CLAD)	---	FACTORY APPLIED
MTL-6	COILING METAL STORAGE DOORS; STORAGE AREA ENTRY DOORS	DESERT SAND (JANUS)	---	FACTORY APPLIED (or) PRIMED & PAINTED
MTL-7	LOUVERED SUNSHADES	WHITE	---	POWDER COATED
SF-1	STOREFRONT FRAMES w/ CLEAR GLAZING	MEDIUM BRONZE (KAWNEER)	---	ANODIZED
RF-1	24 GA. STANDING SEAM METAL ROOFING w/ STIFFENER RIBS	PARCHMENT (AEP SPAN)	PER PLANS	PVDF
RF-2	60 MIL, FULLY ADHERED TPO SINGLE-PLY ROOF MEMBRANE	WHITE	---	---

DATE	NO.	DESCRIPTION
2022-06-23	1	ISSUE FOR ARG #2

PROJECT NO.: 21059.00  
 PROJECT MGR.: DYM  
 DRAWN BY: DYM / MT  
 CHECKED BY: TB

COLOR & MATERIALS BOARD

F01

**savr**  
E-WRC SERIES  
LED Cutoff Wall Pack  
Replaces up to 250W MH

**Easy Installation, Easy on the Wallet**  
Our eULus listed savr E-WRC Series LED Cutoff Wall Pack allows you to select your color temperature based on your needs: 3000K, 4000K, or 5000K. It delivers up to 9600 lumens and features a fast and easy installation, with (4) 1/2-inch conduit knock outs. It's estimated to last over 100,000 hours of maintenance-free operation and comes with a 5-year warranty.

F01- CCT-30K E-WRC05A-F345BZ

Features & Benefits

- CCT selectable options (3000K, 4000K or 5000K)
- Delivers up to 9600 lumens
- FCC Certified
- RoHS Compliant

Recommended Use

- Security
- Commercial
- Perimeter Lighting

Input Voltage

- Universal (120V through 277V Operation)

Certifications



WARNING: See and Reproductive Harm www.p65.ca.gov



F02

**LOCATION:**  
Fixture Type: F02  
Catalog Number: WS-W28521-GH A121715

**AVAILABLE FINISHES:**

**Balthus**  
WS-W28521

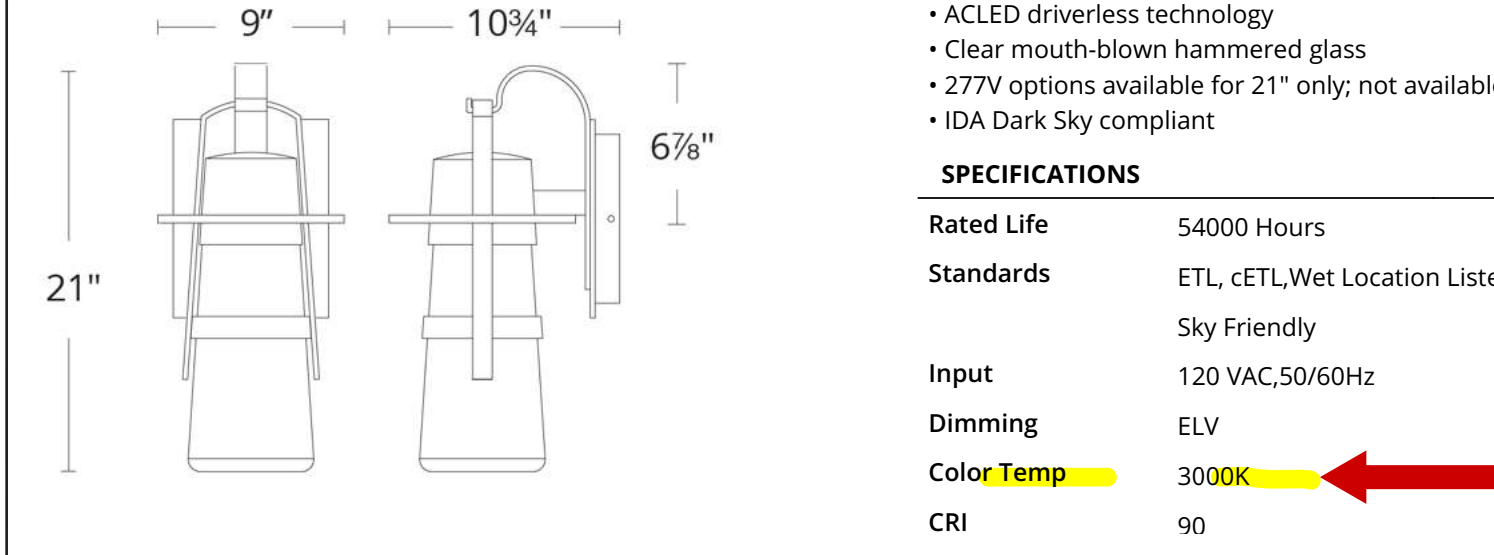
**PRODUCT DESCRIPTION**  
Vintage inspiration meets modern technology on this refined transitional sconce, perfect for lighting the path to your reception hall, residence or restaurant. High-performance LEDs stationed inside emit powerful, energy-efficient light through clear, hammered glass for a shimmering visual effect the eponymous painter would be proud of.

**FEATURES**

- 277V option available for special order.
- ACLED driverless technology
- Clear mouth-blown hammered glass
- 277V options available for 21" only; not available for 14" or 16"
- IDA Dark Sky compliant

**SPECIFICATIONS**

Rated Life 54000 Hours  
Standards ETL, cETL, Wet Location Listed, IP65, Title 24 JA8: 2019 Compliant, Dark Sky Friendly  
Input 120 VAC, 50/60Hz  
Dimming ELV  
Color Temp 3000K  
CRI 90



F03

**KACM LED**  
LED Surface Luminaire

Buy American

**Specifications**

- Length: 17-1/2" (44.3 cm)
- Width: 17-1/2" (44.3 cm)
- Height: 7-1/8" (18.1 cm)
- Weight (max): 36 lbs. (16.4 kg)

**Ordering Information** EXAMPLE: KACM LED 60C 700 50K R5 MVOLT SRM DDBXD

KACM LED	20C	530	30K	R5	MVOLT	CONFIRM
Series	LEDs	Drive current	Color Temp	Distribution	Voltage	Mounting
KACM LED	20C¹	530¹ 530 mA	30K 3000 K	R2 Type II	MVOLT¹¹	Shipped installed
	30C¹	700 700 mA	40K 4000 K	R3 Type III	120¹¹ 277¹¹	SRM Surface mount
	40C		50K 5000 K	R4 Type IV	208¹¹ 240¹¹	TC Through-wire conduit tee (provided by other)
	60C			R5VS Type V very short	240¹¹ 480¹¹	

**Options**

Options	Finish (separate)
Shipped installed	Shipped separately¹
SF Single face (1120, 217, 347V)¹	BL30 Bi-level switched dimming, 30%/100%
DF Double face (208, 240, 480V)¹	BL50 Bi-level switched dimming, 50%/100%
PR Ambient/motion sensor, 8-15' mounting height¹¹	HS House-side shield
PRH Ambient/motion sensor, 15-30' mounting height¹¹	
PRHFCV Motion/ambient sensor for 8-15' mounting height and for typical applications requiring daylight harvesting and Title 24 compliance¹¹	
PRHFCV Motion/ambient sensor for 15-30' mounting height and for typical applications requiring daylight harvesting and Title 24 compliance¹¹	

**Accessories**

- 1. 20C or 30C LED are not available with 530 Drive current and 347V or 480V.
- 2. MVOLT driver operates on any line voltage from 120-277V (200W) and Single face (SF) requires 120, 277 or 347 voltage option. Double face (DF) requires 208 or 480 voltage option.
- 3. Any PRH with BL30, BL50 or PRHMT, is not available with 208V, 240V, 347V, 480V or MVOLT. It is only available in 120V or 277V specified.
- 4. Also available as a separate accessory. See Accessories information at left.
- 5. PRH & PRHFCV specifies the Acuity Controls 1002111111 motion/ambient sensor; the PRH & PRHFCV specifies the Acuity Controls 1002111111 motion/ambient sensor.
- 6. Reference Motion Sensor table.
- 7. PRHFCV and PRHFCV are not available with bi-level, PM, or DCX. They all use the "OCM" module which requires the low voltage CEK motion sensor that only senses motion.
- 8. Requires an additional switched circuit.
- 9. Dimming driver standard MVOLT only.
- 10. Not available with PRHFCV and PRHFCV.

**LITHONIA LIGHTING** One Lithonia Way • Conyers, Georgia 30012 • Phone: 1-800-705-SERV (7378) • www.lithonia.com

F04

**MENW-1100-LED**

**Construction:**

- Steel housing and chassis
- Diffuser is .10 extruded white acrylic

**Light Source:**

- LED
- Dimming to 10% Included

**Notes:**

- Integral mounting plate; keyhole slots
- Top and bottom white acrylic lens - standard
- Optional photocell (PT) increases fixture depth 1 1/2"
- Optional battery backup
- LED Components
  - Replaceable Module
  - CRI > 80
  - Universal 120/277 volt standard
  - 5-Year Warranty on LED Components
- You may also like the MERW or MANW Series

**DESIGN OPTIONS**

**Fixture Overall Dimensions**

- Height - 10.5" - 18" - 26" - 38" - 50"
- Width - 1 1/4"
- Depth - 6 1/2"
- "MC" - 5.25" - 9" - 13" - 19" - 25"
- See 600 or 900 Series for other width options.

**Lightway**  
Revision: 04/21/2021

F05

**D-Series Size 0**  
LED Area Luminaire

**Specifications**

- EPA: 0.95 ft² (0.09 m²)
- Length: 26" (66.0 cm)
- Width: 13" (33.0 cm)
- Height: 3" (7.6 cm)
- Height: 7" (17.8 cm)
- Weight 14 lbs (6.3 kg)

**Ordering Information** EXAMPLE: DSX0 LED P6 40K T3M MVOLT SPA NLTAIR2 PIRHN DDBXD

DSX0 LED	Series	LEDs	Color temperature	Distribution	Voltage	Mounting
DSX0 LED	Forward optics	30K 3000 K	T1S Type I short (Automotive)	TSS Type V short¹	MVOLT (120V-277V)¹⁴	Shipped included
	P1 P5	40K 4000 K	T2S Type II short	TSM Type V medium¹	XVOLT (277V-480V)¹⁵	SFA Square pole mounting
	P2 P6	50K 5000 K	T2M Type II medium	TSW Type V wide¹	120²	RPA Round pole mounting¹
	P3 P7¹		T3S Type III short	BLC Backlight control¹	208²	WBA Wall bracket¹
	PA¹		T3M Type III medium	LCCO Left corner cutoff¹	240²	SFOUMA Square pole universal mounting adaptor¹
	Related optics		T3M Type III medium	RCCO Right corner cutoff¹	277²	RPOUMA Round pole universal mounting adaptor¹
	P10¹		TTM Type IV medium		347²	Shipped separately
	P12¹		TTM Forward throw medium		480²	KMA8 DDBXD U Must arm mounting bracket adaptor (specify finish)¹
	P11¹ P13¹¹		TVS Type V very short¹			

**Control options** | **Other options** | **Finish (separate)**

**Shipped installed**

NLTAIR2 nLight AIG generation 2 enabled¹¹	PIR High flow, motion/ambient sensor, 8-15' mounting height, ambient sensor enabled at 16'¹¹	DDBXD Dark bronze
PIRHN Network, high flow motion/ambient sensor¹¹	PIRHN High flow, motion/ambient sensor, 15-30' mounting height, ambient sensor enabled at 16'¹¹	DLBDL Black
PER NEMA 3W-look receptacle only (control ordered separate)¹¹	PIRIFCV High flow, motion/ambient sensor, 8-15' mounting height, ambient sensor enabled at 16'¹¹	DNAXD Natural aluminum
PER5 Five-pin receptacle only (control ordered separate)¹¹	PIRIFCV High flow, motion/ambient sensor, 15-30' mounting height, ambient sensor enabled at 16'¹¹	DHWXD White
PER7 Seven-pin receptacle only (leads exit fixture) (control ordered separate)¹¹	PIRHFCV High flow, motion/ambient sensor, 15-30' mounting height, ambient sensor enabled at 16'¹¹	DOBXD Textured dark bronze
DMG 0-10V dimming extend out back of housing for external control (control ordered separate)¹¹	FAO Field adjustable output¹¹	DDBLXD Textured dark bronze
		DNBXD Textured black
		DDBXD Textured dark bronze
		DNLXD Textured natural aluminum
		DHWXD Textured white

**Shipped separately**

HS House-side shield¹	DOBXD Dark bronze
SF Single face (1120, 217, 347V)¹	DLBDL Black
DF Double face (208, 240, 480V)¹	DNAXD Natural aluminum
L90 Left-raster optics¹	DHWXD White
R90 Right-raster optics¹	DOBXD Textured dark bronze
DOL Diffused drop lens¹	DDBLXD Textured dark bronze
HA 50% ambient operations¹	DNLXD Textured natural aluminum
BAA Buy American/Act Compliant	DHWXD Textured white

**Lightway**  
Revision: 04/21/2021

F06

**Radean Post Top**  
LED Area Luminaire

**Specifications**

- EPA: 1.02 ft² (0.105 m²)
- Length: 24" (61 cm)
- Width: 24" (61 cm)
- H1 Luminaire Height: 4" (10.16 cm)
- H2 Luminaire Height: 26" (66.04 cm)
- Weight: 38lbs (17.24kg)

**Ordering Information** EXAMPLE: RADPT LED P3 30K SYM MVOLT PT4 PIR DNAXD

RADPT LED	P2	30K	SYM	MVOLT	CONFIRM
Series	Performance package	Color temperature	Distribution	Voltage	Mounting (separate)
RADPT LED	P1 3,000 Lumens	27K 2700 K	SYM Symmetric type V	MVOLT¹ 277¹	PT4¹ Slips inside a 4" ID round metal pole
	P2 5,000 Lumens	30K 3000 K	ASY Asymmetric type IV	120¹ 347¹	RADPT20 Slips over a 2 3/8" diameter tension
	P3 7,000 Lumens	35K 3500 K	PATH Pathway type II	208¹ 480¹	RADPT25 Slips over a 2 7/8" diameter tension
	P4 10,000 Lumens	40K 4000 K		240¹	
	P5 15,000 Lumens	50K 5000 K			

**CONFIRM**

Control options	Other options	Shipped installed	Finish (separate)
Shipped installed	SF Single face¹	DDBXD Dark bronze	
NLTMR2 nLight AIG 2.0 enabled¹¹	DF Double face¹	DLBDL Black	
PIR Bi-level motion/sensor (100% to 30%)¹¹	R90 Rotated optics¹	DNLXD Natural aluminum	
PE Bottom photocell¹		DNBXD Textured black	
FAD Field adjustable output¹¹		DDBXD Textured dark bronze	
		DNLXD Textured natural aluminum	
		DHWXD Textured white	

**LITHONIA LIGHTING** COMMERCIAL OUTDOOR One Lithonia Way • Conyers, Georgia 30012 • Phone: 1-800-705-SERV (7378) • www.lithonia.com



WEST COAST SELF STORAGE  
PALM SPRINGS  
890 NORTH GENE AUTRY TRAIL  
PALM SPRINGS, CALIFORNIA 92262

DATE	NO.	DESCRIPTION
2022-06-22		ISSUE FOR ARC #2

PROJECT NO.: 21059.00  
PROJECT MGR.: DYM  
DRAWN BY: DYM / MT  
CHECKED BY: TB

LIGHT FIXTURE CUTSHEETS

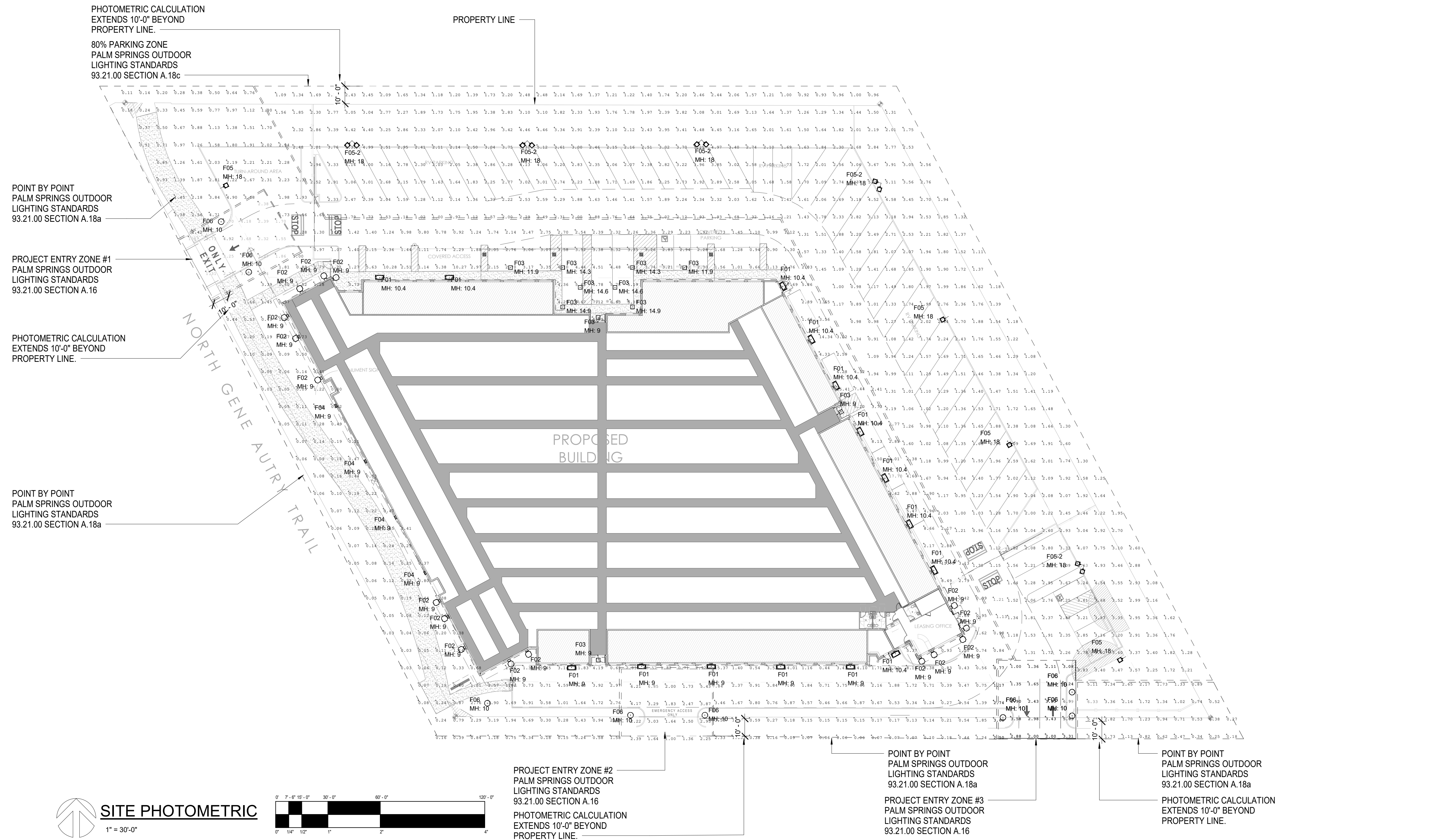
A3.21

LUMINAIRE SCHEDULE										
TYPE	SYMBOL	QTY	MANUFACTURER	MODEL	LLF	LUMENS PER FIXTURE	WATTS	TOTAL WATTS	MOUNTING HEIGHT	COLOR TEMP
F01		15	SAVR OR APPROVED EQUAL	E-WRC05A-F345BZ	0.800	5021	38	570	9, 10.4	3,000K
F02		16	WAC LIGHTING - MODERN FORMS OR APPROVED EQUAL	WS-W28521-GH A121715	0.800	467	9.2	147.2	9	3,000K
F03		11	LITHONIA OR APPROVED EQUAL	KACM LED 20C 530 30K R5 MVOLT	0.800	4380	35	385	9, 11.9, 14.3, 14.6, 14.9	3,000K
F04		4	LIGHTWAY OR APPROVED EQUAL	MANW-1126-LED-U-1 8W	0.800	1107	16.95	67.8	9	3,500K
F05		4	LITHONIA_1 OR APPROVED EQUAL	DSX0 LED P6 30K T5W MVOLT	0.800	15283	134	536	18	3,000K
F05-2		5	LITHONIA- OR APPROVED EQUAL	DSX0 LED P6 30K T5W MVOLT	0.800	15283	134	1340	18	3,000K
F06		8	LITHONIA--- OR APPROVED EQUAL	RADPT P2 30K SYM	0.800	4930	38.0107	304.086	10	3,000K

**GENERAL NOTES:**

1. THESE DRAWINGS ARE FOR CONCEPTUAL USE ONLY AND ARE NOT INTENDED FOR CONSTRUCTION. VALUES REPRESENTED ARE AN APPROXIMATION GENERATED FROM DATA SUPPLIED BY LAMP MFG. AND TESTING LABS.
2. ALL SITE LIGHT FIXTURES ARE TO BE FULL CUT OFF IF THEY EXCEED 4800 LUMENS PER PALM SPRINGS OUTDOOR LIGHTING STANDARDS 93.21.00 SECTION A.6. SEE LIGHTING CUT SHEETS INCLUDED IN PLANS FOR SPECIFICATION.

CALCULATION SUMMARY							
LABEL	CALC TYPE	UNITS	AVG	MAX	MIN	AVG/MIN	MAX/MIN
80% PARKING ZONE	Illuminance	Fc	2.18	5.63	1.00	2.69	6.95
PROJECT ENTRY ZONE #1	Illuminance	Fc	2.80	4.92	1.00	2.67	4.69
PROJECT ENTRY ZONE #2	Illuminance	Fc	2.94	6.85	1.00	3.09	7.21
PROJECT ENTRY ZONE #3	Illuminance	Fc	2.90	6.99	1.00	3.00	6.86



**WEST COAST SELF STORAGE**  
**PALM SPRINGS**  
**890 NORTH GENE AUTRY TRAIL**  
**PALM SPRINGS, CA**

**REVISION SCHEDULE**

NO.	DESCRIPTION	DATE

**PHOTOMETRIC SITE LIGHTING PLAN**

PROJECT NUMBER	223009
DATE	05/10/2022
DRAWN BY	CM,NP
CHECKED BY	CM
<b>EP3.01</b>	
SCALE	As indicated

