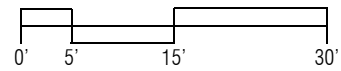
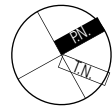








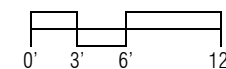
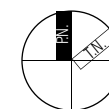
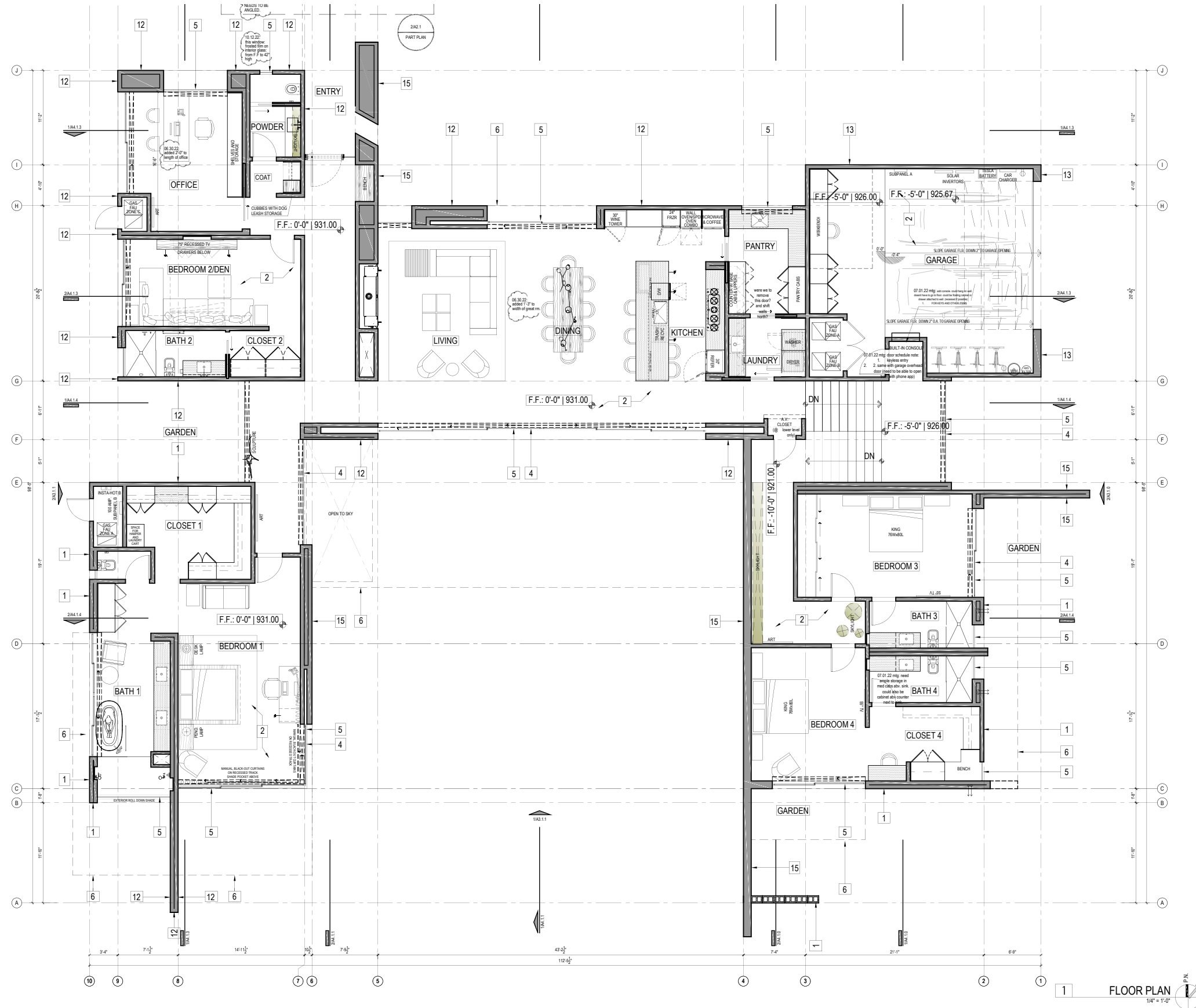
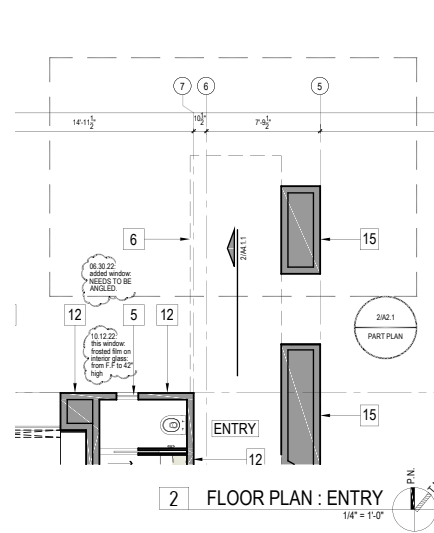
191'-10 5/8"
 OVERALL
 2245 WINTER SUN DRIVE
 PALM SPRINGS, CA 92262



LIGHTING LEGEND: VOLT LOW VOLTAGE LANDSCAPE LIGHTING							
FIXTURE	FIXTURE TYPE	MANUFACTURER	MODEL NUMBER	LAMP	LUMEN	REMARKS	TOTAL QUANTITY
@ GRADE 	GROUND MTD: SPOT, UP-LIGHTING	VOLT	ALL-STAR ALUMINUM MR 16 SPOTLIGHT VAL-2000-25-ABZ FINISH: BRONZE	LED MR-16 5 W 3000K	400 LUMENS	W/ LONG GROUND STAKE	37
@ GRADE 	WELL MTD: WELL UP-LIGHTING (CONE)	VOLT	SALTY DOG IN-GRADE LIGHT BDL-VWL-703-S-BBZ FINISH: BRONZE	LED MR-16 5 W 3000K	400 LUMENS	BRONZE GRATED CONE/SHEILD MODEL: INSTALL W/ 10" LONG HAMMER STAKE WITH CUTOUT FOR WIRE EXIT	15
@ GRADE 	PUCK LIGHT	VOLT	BUDDY PRO PLUS BRASS LED PUCK LIGHT VHS-6704-8-BRB FINISH: BRONZE	LED 3 W	300 LUMENS	ORDER W/ OPTION "D" GLARE GUARD)	35
@ GRADE 	DRIVEWAY LIGHT	SPJ LIGHTING	FOREVER BRIGHT SPJ13-13AIO FINISH: MBR (MATTE BRONZE)	OPTIC: FLOOD 2700K	135 LUMENS	SURFACE MOUNTED	3
TOTAL LIGHTS							90
	TRANSFORMER FOR LANDSCAPE LIGHTING: 600 WATT 12V-15V MULTI-TAP	VOLT	VTR-600-NG-BUNDLE NON-BRUSHED STAINLESS STEEL HOUSING SIZED PER LIGHTING WATTAGE REQUIREMENT	N/A	N/A	TIMER SUPPLIED BY OWNER: ATOMIC CLOCK BY INTERMATIC (SELF ADJUSTING FOR DAYLIGHT SAVINGS TIME, AND WITH BATTERY BACKUP)	3
	MAIN WIRE ARTERY: NEW LOW VOLTAGE LANDSCAPE LIGHTING WIRING	VOLT	12 GAUGE	N/A	N/A	DIRECT BURIAL CABLE: 12 GAUGE, 2-WIRE, PVC COATED: BLACK - USE ALL SILICONE FILLED WIRE NUTS THROUGHOUT ENTIRE SYSTEM	X-LINEAL FEET (V.I.F.)

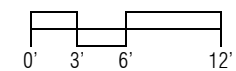
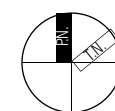
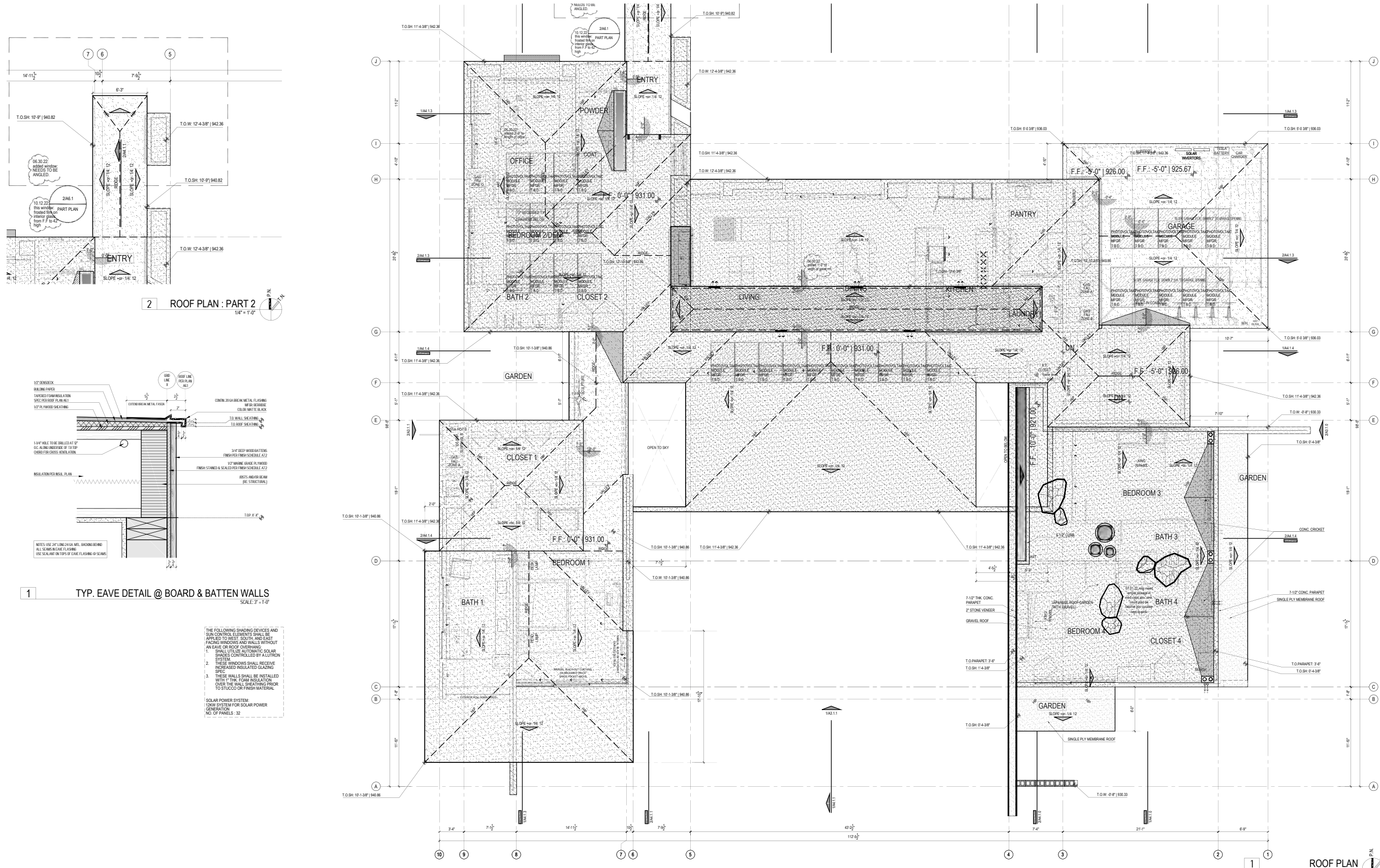
MATERIAL LEGEND

- 1 **SMOOTH TEXTURE STUCCO**
MFR: PAREXUSA
MODEL: LA HABRA
PRODUCT: SBMF
OPTION A:
COLOR: BASALT
OPTION B:
COLOR: TUXEDO
- 2 **CONCRETE FLOOR: POLISHED**
COLOR: TO MATCH GREY EARTH BY SAPIEN-STONE
- 3 **PLUMBING FIXTURE**
FINISH OPTION A:
FINISH: BLACK (MATTE OR BRUSHED)
FINISH OPTION B:
FINISH: GOLD/ BRASS (MATTE OR BRUSHED)
- 4 **GLAZING**
MFR: GUARDIAN GLASS
MODEL: SNX 62/27
COLOR: GREY
- 5 **WINDOW AND SLIDER FRAMES**
MFR: FLEETWOOD USA
COLOR: DARK BRONZE ANODIZED
- 6 **METAL EAVE**
MFR: BERRIDGE
MODEL: 20 GAUGE - KYNAR 500/ HYLAR 5000
COLOR: MATTE BLACK
- 7 **POOL PLASTER**
MFR: PEBBLETEC
PRODUCT: PEBBLEFINA
COLOR: DARK STRPMY SEAS
- 8 **POOL WATERLINE TILE**
MFR: ANN SACKS
SERIES: SAVOY
PRODUCT: MEDIUM MOSAICS
GLAZES: METALLIC
COLOR: GRAPHITE
TYPE: FIELD
DESIGN: STACKED
ORIENTATION: VERTICAL
- 9 **ROOF MEMBRANE**
MFR: DURO-LAST
MODEL: 50 MIL-SINGLE PLY
COLOR: LIGHT-TAN
A. BUILT-UP SYSTEM W/ GRAVEL BALLAST
COLOR: COOL GREY
PRODUCT: 3/8" MINUS GRAVEL
- 10 **GROUND COVER**
PRODUCT: 3/8" CRUSHED GRAVEL
COLOR: CHAMOIS BEIG
- 11 **WOOD DECKING**
WOOD SPECIES: TEAK, PLANTATION GROWN
COLOR: STAINED, GREY-WASHED FINISH
- 12 **VERTICAL WOOD SIDING**
WOOD SPECIES: GARAPA
COLOR: WHITE-WASHED (BLEACHED)
- 13 **BLACKENED STEEL**
PRODUCT: 1/4" THICK STEEL PLATE
FINISH: PAINTED TRICORN
MFR: SHERWIN WILLIAMS
- 14 **STONE PAVERS**
MFR: BELGARD
MODEL: OLD WORLD PAVER
PRODUCT: VICTORIAN
- 15 **NATURAL STONE WEB WALL**
COLOR: "BARNWOOD BLUE" BY BEUCHEL STONE
PATTERN : MOSAIC
- 16 **CONCRETE HARDSCAPE COLOR**
MFR: DAVIS COLOR
COLOR: LIGHT-GREY 8084
FINISH A: SAND FINISH
MFR: DAYTON SUPERIOR
PRODUCT: TOP-CAST NO.03
FINISH B: EXPOSED AGGREGATE
MFR: DAYTON SUPERIOR
PRODUCT: TOP-CAST NO.50



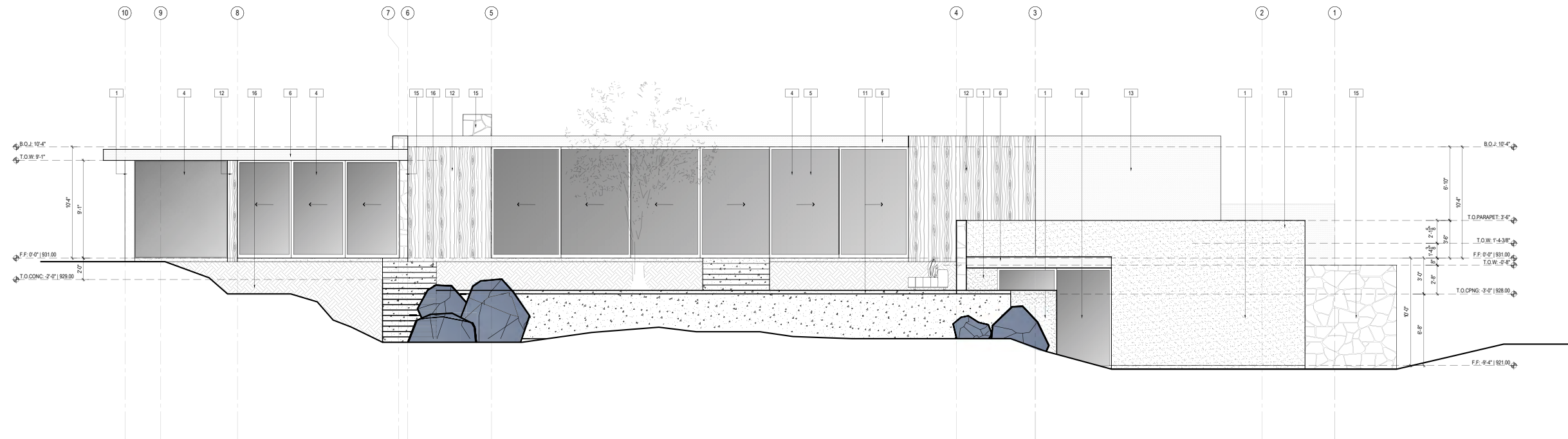
MATERIAL LEGEND

- 1 **SMOOTH TEXTURE STUCCO**
MFR: PAREXUSA
MODEL: LA HABRA
PRODUCT: SBMF
OPTION A:
COLOR: BASALT
OPTION B:
COLOR: TUXEDO
- 2 **CONCRETE FLOOR: POLISHED**
COLOR: TO MATCH GREY EARTH BY SAPIEN-STONE
- 3 **PLUMBING FIXTURE**
FINISH OPTION A:
FINISH: BLACK (MATTE OR BRUSHED)
FINISH OPTION B:
FINISH: GOLD/ BRASS (MATTE OR BRUSHED)
- 4 **GLAZING**
MFR: GUARDIAN GLASS
MODEL: SNX 62/27
COLOR: GREY
- 5 **WINDOW AND SLIDER FRAMES**
MFR: FLEETWOOD USA
COLOR: DARK BRONZE ANODIZED
- 6 **METAL EAVE**
MFR: BERRIDGE
MODEL: 20 GAUGE - KYNAR 500/ HYLAR 5000
COLOR: MATTE BLACK
- 7 **POOL PLASTER**
MFR: PEBBLETEC
PRODUCT: PEBBLEFINA
COLOR: DARK STRPMY SEAS
- 8 **POOL WATERLINE TILE**
MFR: ANN SACKS
SERIES: SAVOY
PRODUCT: MEDIUM MOSAICS
GLAZES: METALLIC
COLOR: GRAPHITE
TYPE: FIELD
DESIGN: STACKED
ORIENTATION: VERTICAL
- 9 **ROOF MEMBRANE**
MFR: DURO-LAST
MODEL: 50 MIL-SINGLE PLY
COLOR: LIGHT-TAN
A. BUILT-UP SYSTEM W/ GRAVEL BALLAST
COLOR: COOL GREY
PRODUCT: 3/8" MINUS GRAVEL
- 10 **GROUND COVER**
PRODUCT: 3/8" CRUSHED GRAVEL
COLOR: CHAMOIS BEIG
- 11 **WOOD DECKING**
WOOD SPECIES: TEAK, PLANTATION GROWN
COLOR: STAINED, GREY-WASHED FINISH
- 12 **VERTICAL WOOD SIDING**
WOOD SPECIES: GARAPA
COLOR: WHITE-WASHED (BLEACHED)
- 13 **BLACKENED STEEL**
PRODUCT: 1/4" THICK STEEL PLATE
FINISH: PAINTED TRICORN
MFR: SHERWIN WILLIAMS
- 14 **STONE PAVERS**
MFR: BELGARD
MODEL: OLD WORLD PAVER
PRODUCT: VICTORIAN
- 15 **NATURAL STONE WEB WALL**
COLOR: "BARNWOOD BLUE" BY BEUCHEL STONE
PATTERN : MOSAIC
- 16 **CONCRETE HARDSCAPE COLOR**
MFR: DAVIS COLOR
COLOR: LIGHT-GREY 8084
FINISH A: SAND FINISH
MFR: DAYTON SUPERIOR
PRODUCT: TOP-CAST NO.03
FINISH B: EXPOSED AGGREGATE
MFR: DAYTON SUPERIOR
PRODUCT: TOP-CAST NO.50



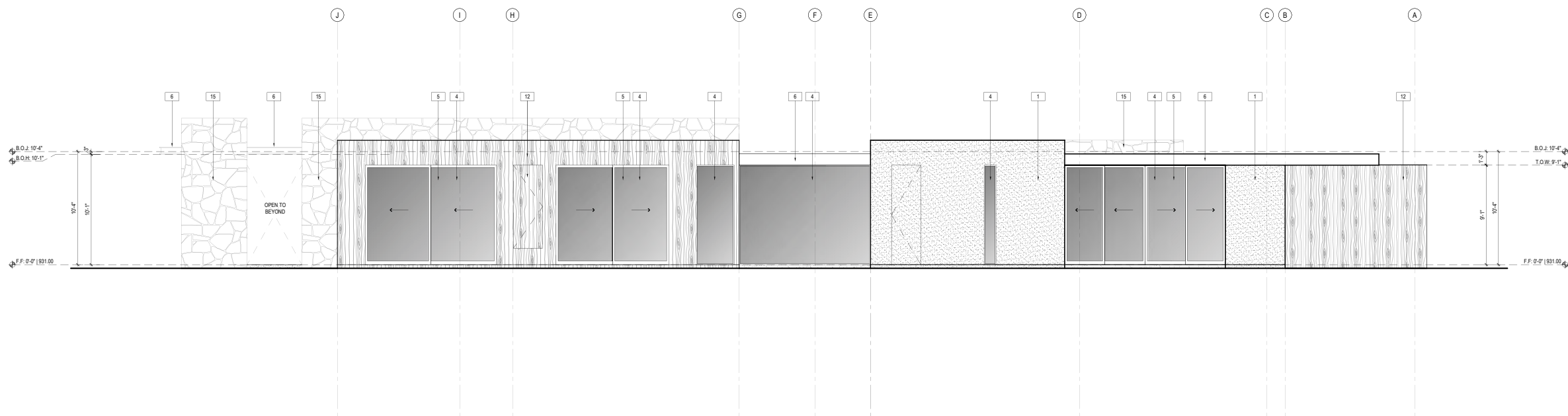
MATERIAL LEGEND

- 1 SMOOTH TEXTURE STUCCO**
 MFR: PAREXUSA
 MODEL: LA HABRA
 PRODUCT: SBMF
 OPTION A:
 COLOR: BASALT
 OPTION B:
 COLOR: TUXEDO
- 2 CONCRETE FLOOR: POLISHED**
 COLOR: TO MATCH GREY EARTH BY SAPIEN-
 STONE
- 3 PLUMBING FIXTURE**
 FINISH OPTION A:
 FINISH: BLACK (MATTE OR BRUSHED)
 FINISH OPTION B:
 FINISH: GOLD/ BRASS (MATTE OR
 BRUSHED)
- 4 GLAZING**
 MFR: GUARDIAN GLASS
 MODEL: SNX 62/27
 COLOR: GREY
- 5 WINDOW AND SLIDER FRAMES**
 MFR: FLEETWOOD USA
 COLOR: DARK BRONZE ANODIZED
- 6 METAL EAVE**
 MFR: BERRIDGE
 MODEL: 20 GAUGE - KYNAR 500/ HYLAR 5000
 COLOR: MATTE BLACK
- 7 POOL PLASTER**
 MFR: PEBBLETEC
 PRODUCT: PEBBLEFINA
 COLOR: DARK STRPMY SEAS
- 8 POOL WATERLINE TILE**
 MFR: ANN SACKS
 SERIES: SAVOY
 PRODUCT: MEDIUM MOSAICS
 GLAZES: METALLIC
 COLOR: GRAPHITE
 TYPE: FIELD
 DESIGN: STACKED
 ORIENTATION: VERTICAL
- ROOF MEMBRANE**
 MFR: DURO-LAST
 MODEL: 50 MIL-SINGLE PLY
 COLOR: LIGHT-TAN
 A. BUILT-UP SYSTEM W/GRAVEL BALLAST
 COLOR: COOL GREY
 PRODUCT: 3/8" MINUS GRAVEL
- 9**
- 10 GROUND COVER**
 PRODUCT: 3/8" CRUSHED GRAVEL
 COLOR: CHAMOIS BEIG
- 11 WOOD DECKING**
 WOOD SPECIES: TEAK, PLANTATION GROWN
 COLOR: STAINED, GREY-WASHED FINISH
- 12 VERTICAL WOOD SIDING**
 WOOD SPECIES: GARAPA
 COLOR: WHITE-WASHED (BLEACHED)
- 13 BLACKENED STEEL**
 PRODUCT: 1/4" THICK STEEL PLATE
 FINISH: PAINTED TRICORN
 MFR: SHERWIN WILLIAMS
- 14 STONE PAVERS**
 MFR: BELGARD
 MODEL: OLD WORLD PAVER
 PRODUCT: VICTORIAN
- 15 NATURAL STONE WEB WALL**
 COLOR: "BARNWOOD BLUE" BY BEUCHEL STONE
 PATTERN: MOSAIC
- 16 CONCRETE HARDSCAPE COLOR**
 MFR: DAVIS COLOR
 COLOR: LIGHT-GREY 8084
 FINISH A: SAND FINISH
 MFR: DAYTON SUPERIOR
 PRODUCT: TOP-CAST NO.03
 FINISH B: EXPOSED AGGREGATE
 MFR: DAYTON SUPERIOR
 PRODUCT: TOP-CAST NO.50



2

SOUTH ELEVATION

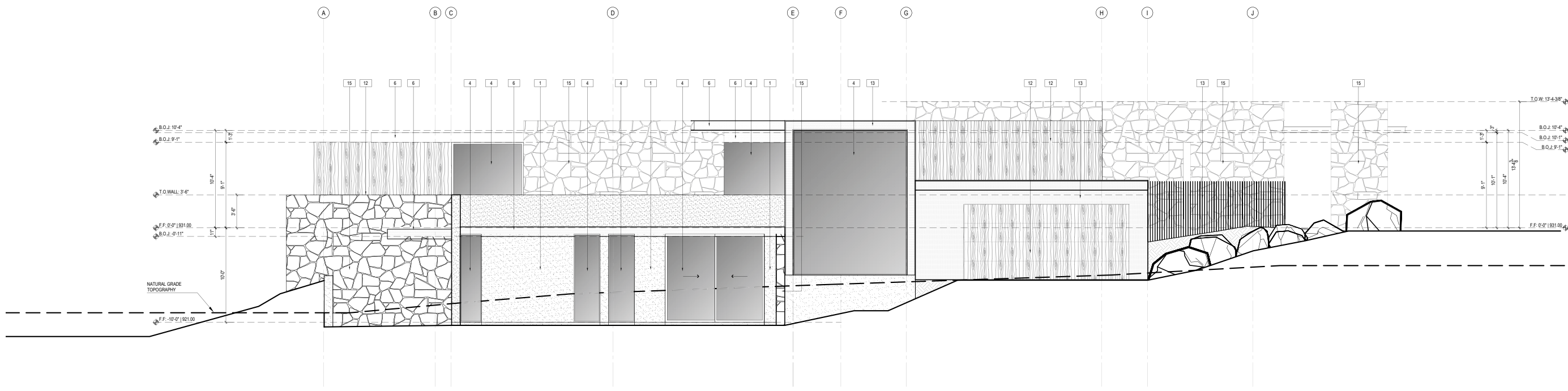


1

EAST ELEVATION

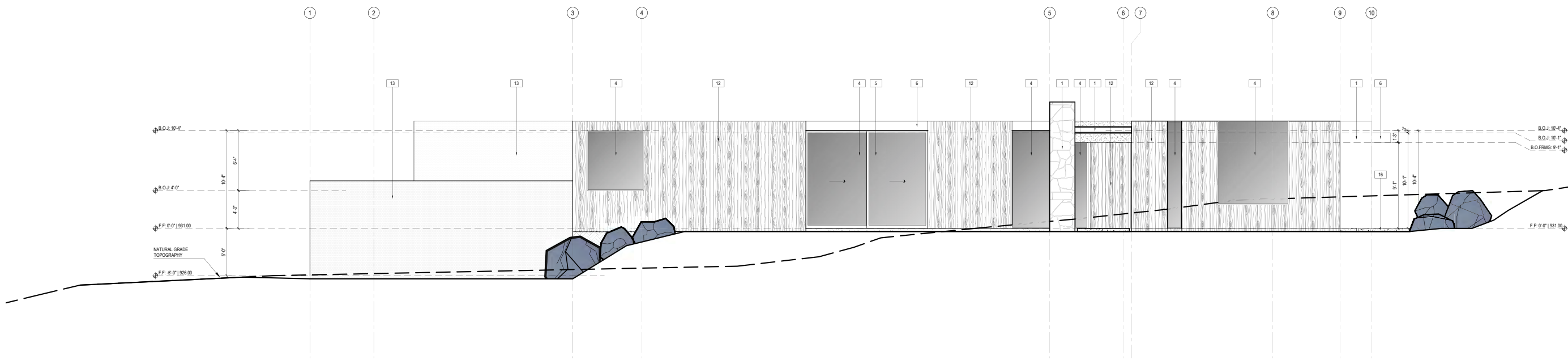
MATERIAL LEGEND

- 1 SMOOTH TEXTURE STUCCO**
MFR: PAREXUSA
MODEL: LA HABRA
PRODUCT: SBMF
OPTION A:
COLOR: BASALT
OPTION B:
COLOR: TUXEDO
- 2 CONCRETE FLOOR: POLISHED**
COLOR: TO MATCH GREY EARTH BY SAPIEN-
STONE
- 3 PLUMBING FIXTURE**
FINISH OPTION A:
FINISH: BLACK (MATTE OR BRUSHED)
FINISH OPTION B:
FINISH: GOLD/ BRASS (MATTE OR
BRUSHED)
- 4 GLAZING**
MFR: GUARDIAN GLASS
MODEL: SNX 62/27
COLOR: GREY
- 5 WINDOW AND SLIDER FRAMES**
MFR: FLEETWOOD USA
COLOR: DARK BRONZE ANODIZED
- 6 METAL EAVE**
MFR: BERRIDGE
MODEL: 20 GAUGE - KYNAR 500/ HYLAR 5000
COLOR: MATTE BLACK
- 7 POOL PLASTER**
MFR: PEBBLETEC
PRODUCT: PEBBLEFINA
COLOR: DARK STRPMY SEAS
- 8 POOL WATERLINE TILE**
MFR: ANN SACKS
SERIES: SAVOY
PRODUCT: MEDIUM MOSAICS
GLAZES: METALLIC
COLOR: GRAPHITE
TYPE: FIELD
DESIGN: STACKED
ORIENTATION: VERTICAL
- 9 ROOF MEMBRANE**
MFR: DURO-LAST
MODEL: 50 MIL-SINGLE PLY
COLOR: LIGHT-TAN
A. BUILT-UP SYSTEM W/GRAVEL BALLAST
COLOR: COOL GREY
PRODUCT: 3/8" MINUS GRAVEL
- 10 GROUND COVER**
PRODUCT: 3/8" CRUSHED GRAVEL
COLOR: CHAMOIS BEIG
- 11 WOOD DECKING**
WOOD SPECIES: TEAK, PLANTATION GROWN
COLOR: STAINED, GREY-WASHED FINISH
- 12 VERTICAL WOOD SIDING**
WOOD SPECIES: GARAPA
COLOR: WHITE-WASHED (BLEACHED)
- 13 BLACKENED STEEL**
PRODUCT: 1/4" THICK STEEL PLATE
FINISH: PAINTED TRICORN
MFR: SHERWIN WILLIAMS
- 14 STONE PAVERS**
MFR: BELGARD
MODEL: OLD WORLD PAVER
PRODUCT: VICTORIAN
- 15 NATURAL STONE WEB WALL**
COLOR: "BARNWOOD BLUE" BY BEUCHEL STONE
PATTERN: MOSAIC
- 16 CONCRETE HARDSCAPE COLOR**
MFR: DAVIS COLOR
COLOR: LIGHT-GREY 8084
FINISH A: SAND FINISH
MFR: DAYTON SUPERIOR
PRODUCT: TOP-CAST NO.03
FINISH B: EXPOSED AGGREGATE
MFR: DAYTON SUPERIOR
PRODUCT: TOP-CAST NO.50



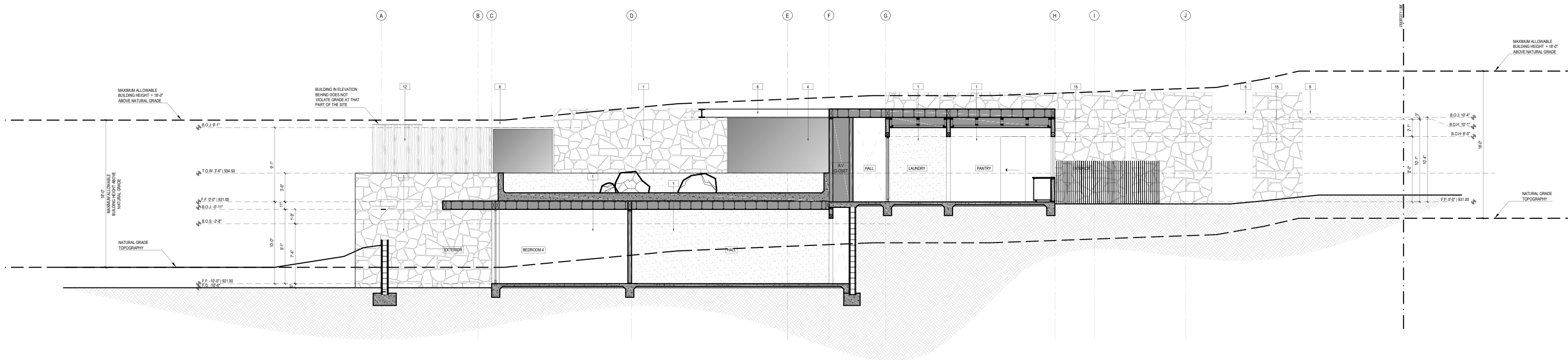
4

WEST ELEVATION



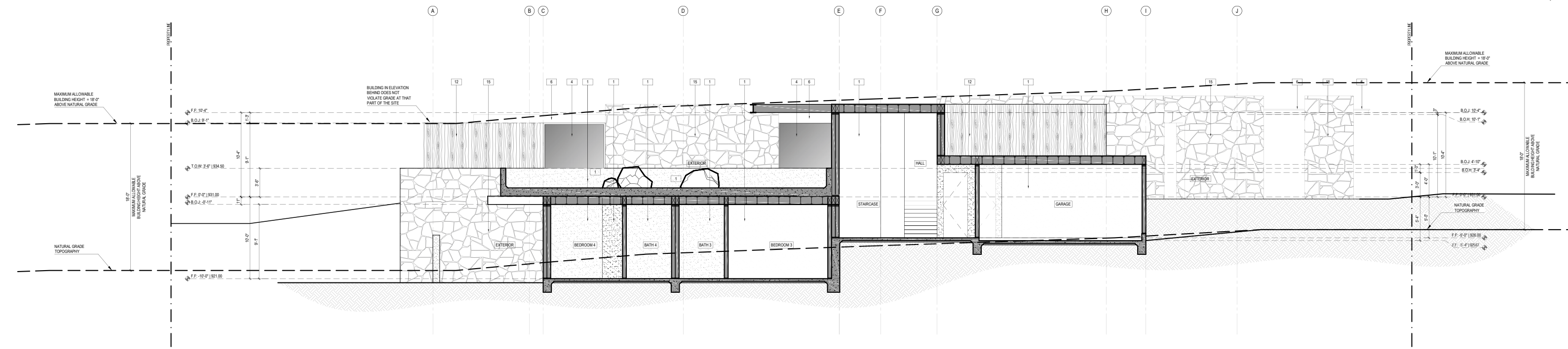
3

NORTH ELEVATION



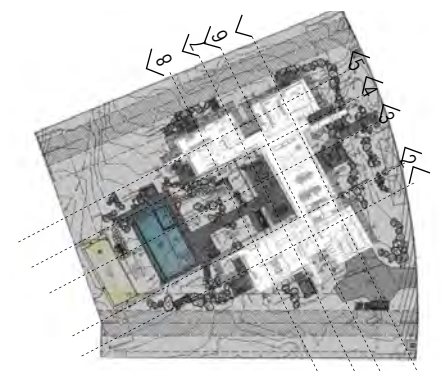
2

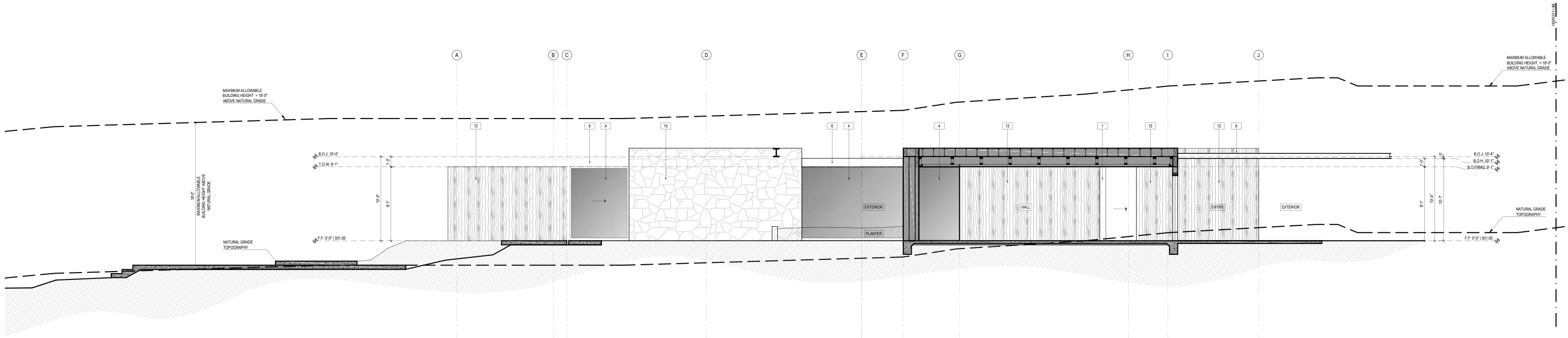
BUILDING SECTION: E | W



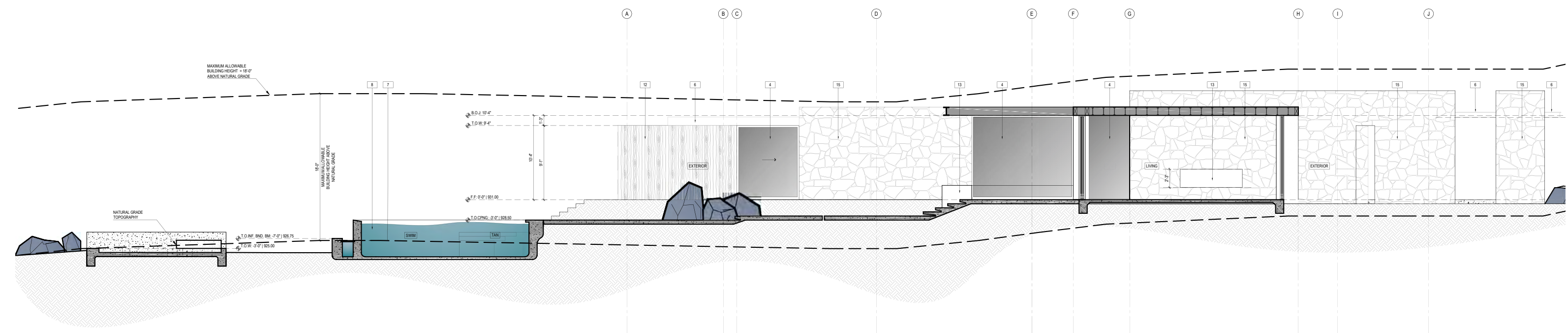
1

BUILDING SECTION: E | W

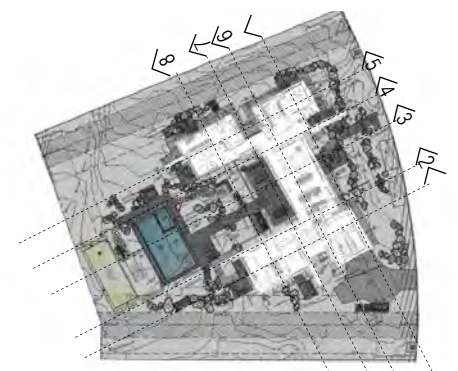


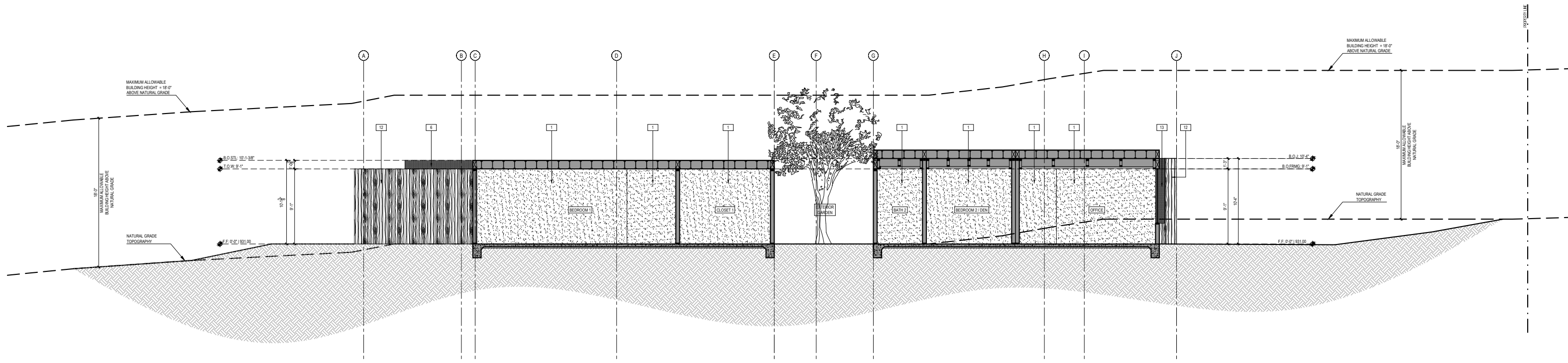


4 BUILDING SECTION: E | W



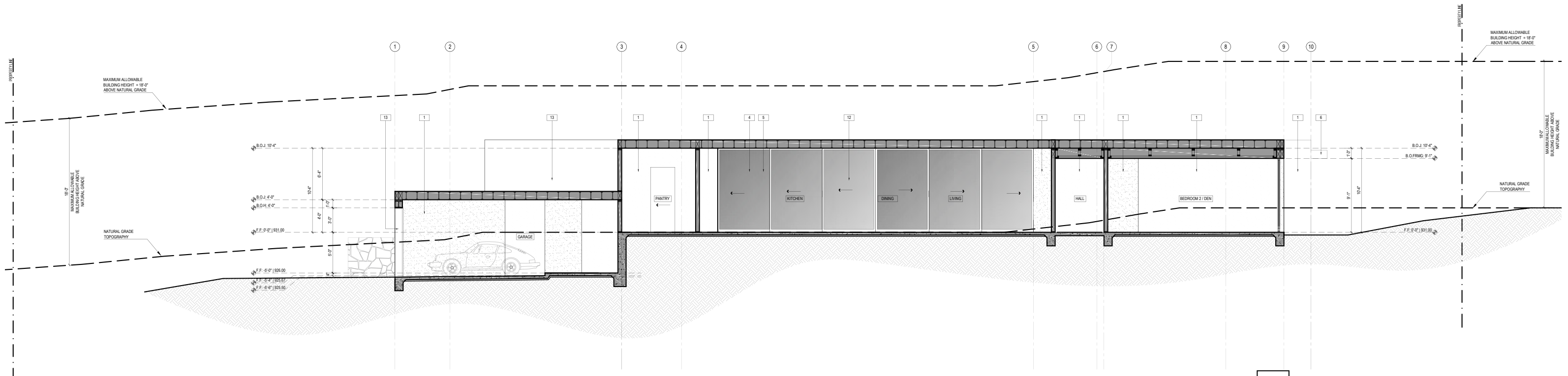
3 BUILDING SECTION: E | W



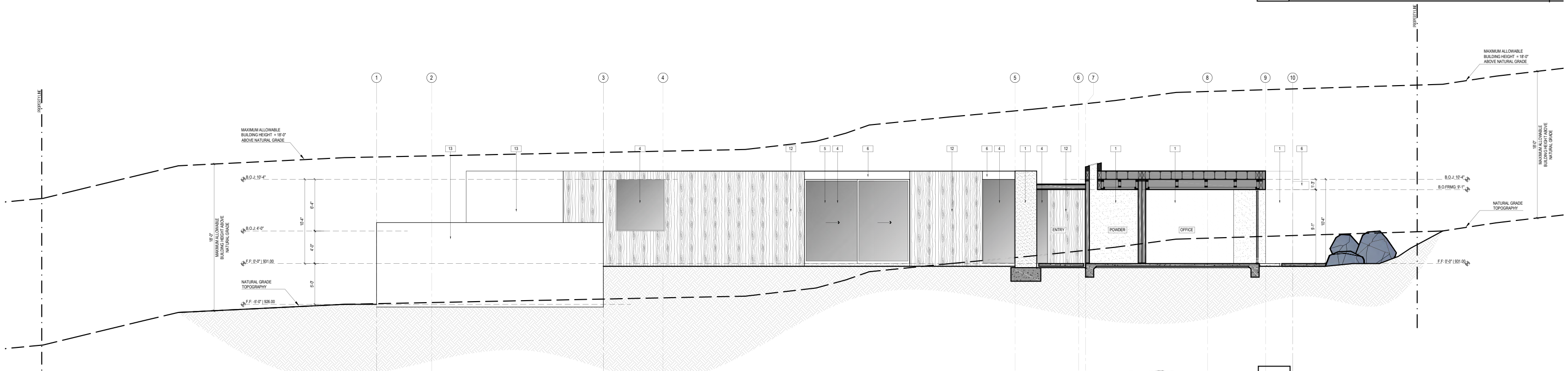


5 BUILDING SECTION: N | S

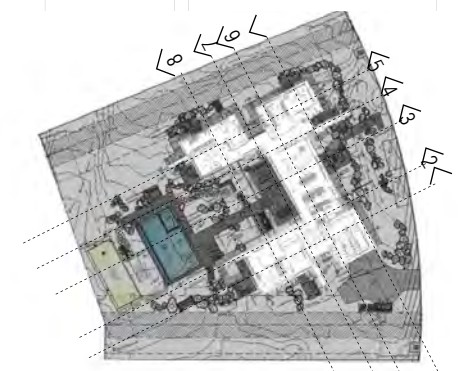


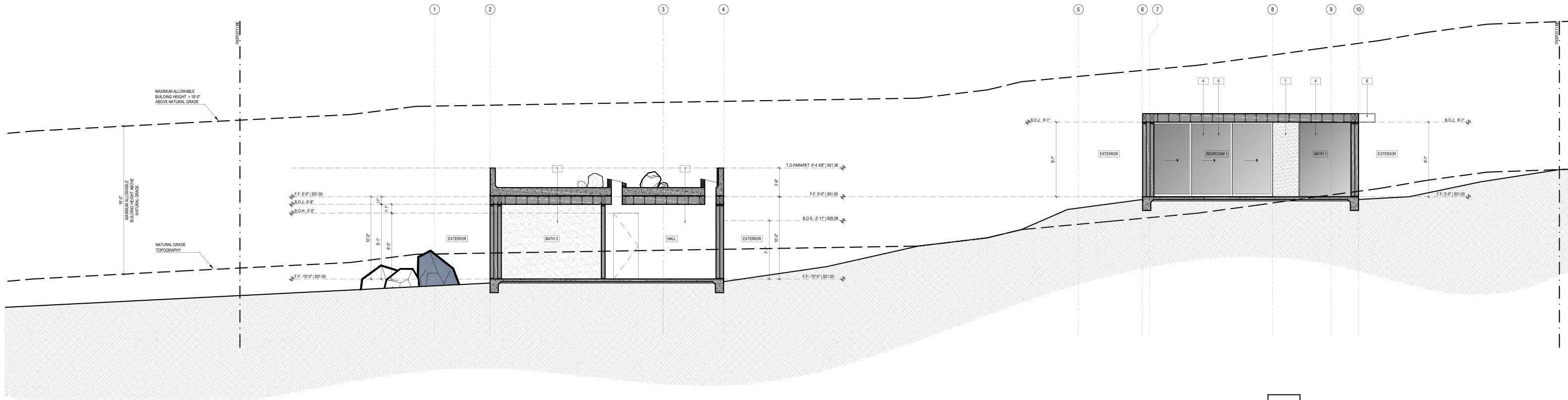


8 BUILDING SECTION: N|S

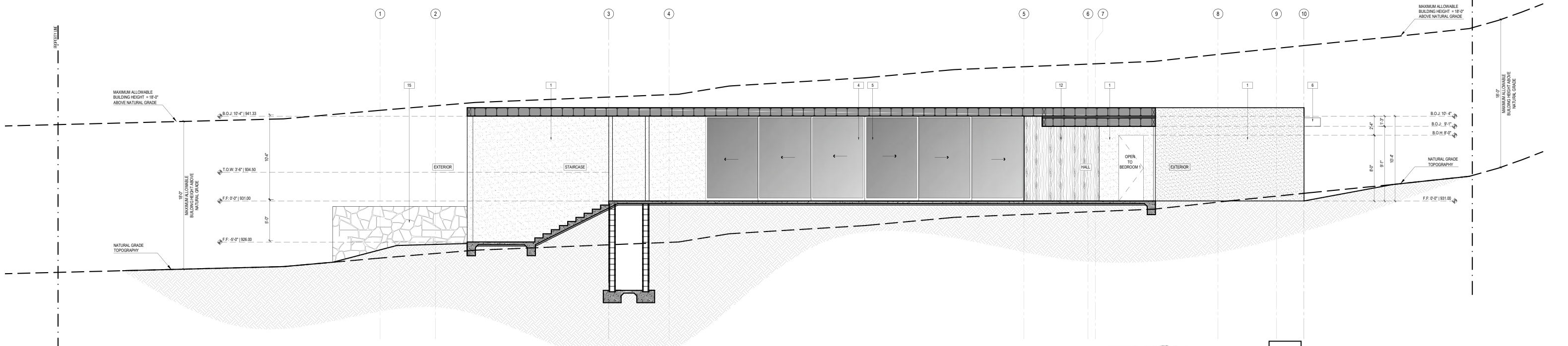


7 BUILDING SECTION: N|S

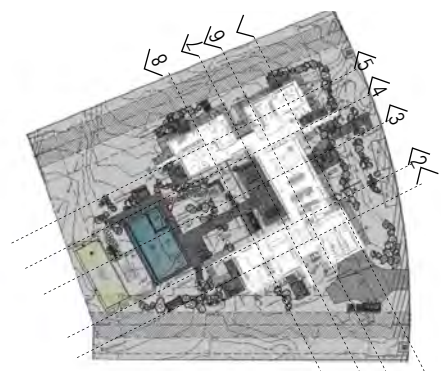


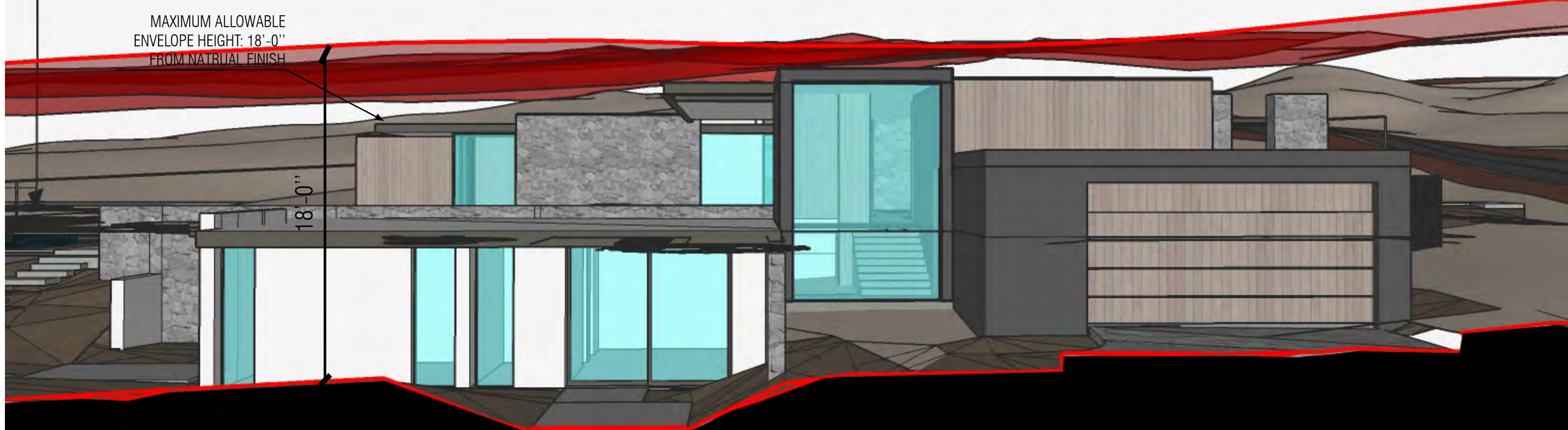


8 BUILDING SECTION: N | S

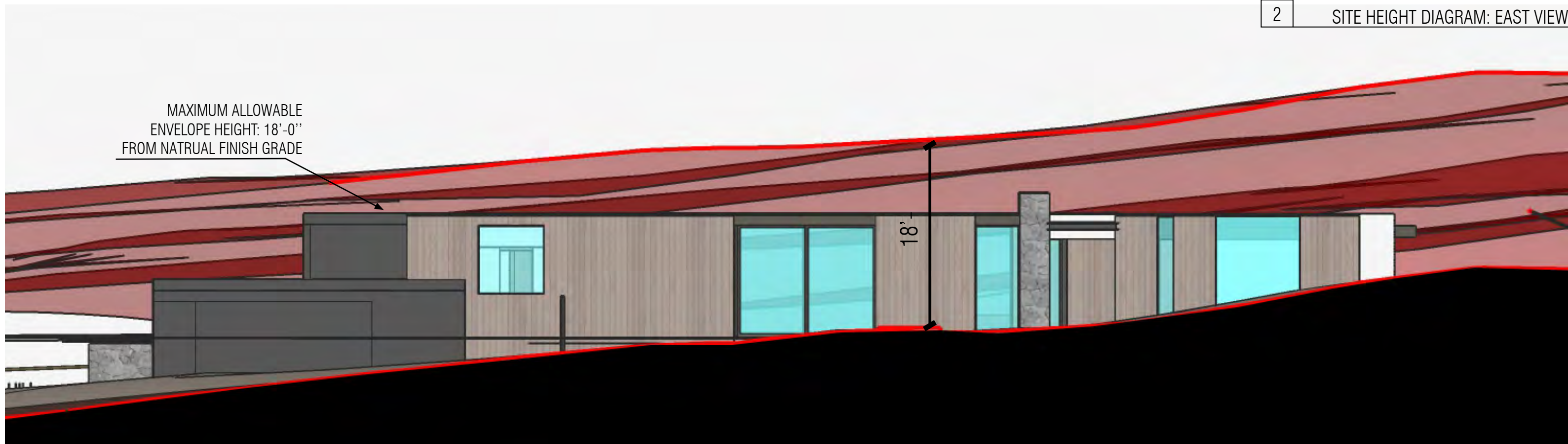


7 BUILDING SECTION: N | S

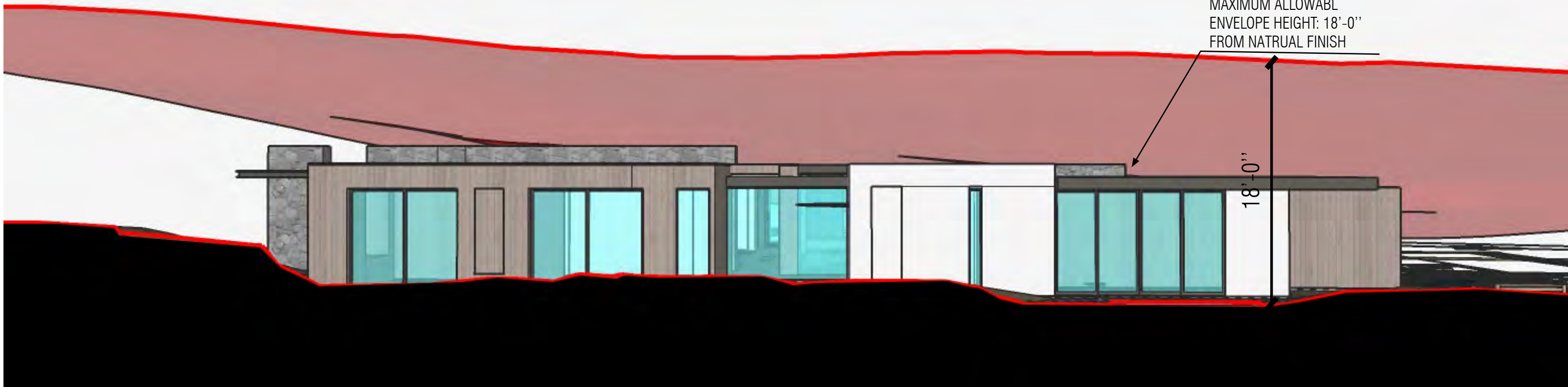




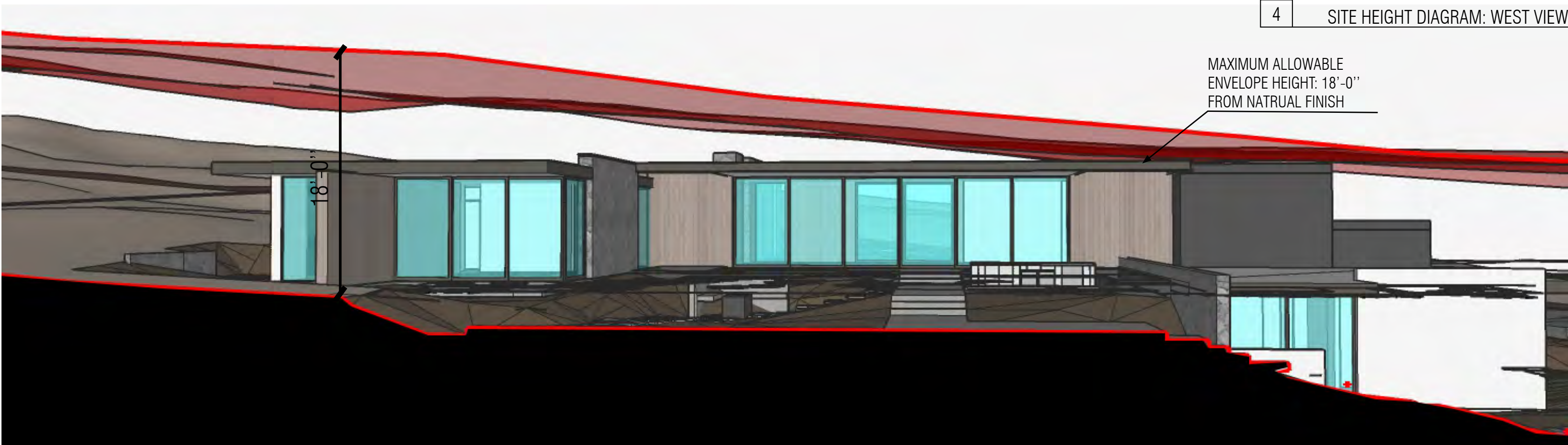
2 SITE HEIGHT DIAGRAM: EAST VIEW



1 SITE HEIGHT DIAGRAM: NORTH VIEW



4 SITE HEIGHT DIAGRAM: WEST VIEW



3 SITE HEIGHT DIAGRAM: SOUTH VIEW











LOOKING NORTH WEST AT PROJECT



LOOKING SOUTHEAST AT PROJECT FROM STREET



GUEST BEDROOMS IN THE SOUTH EAST CORNER



LOOKING EAST AT PROJECT FROM STREET



VIEW OF OUTDOOR NEAR LIVING



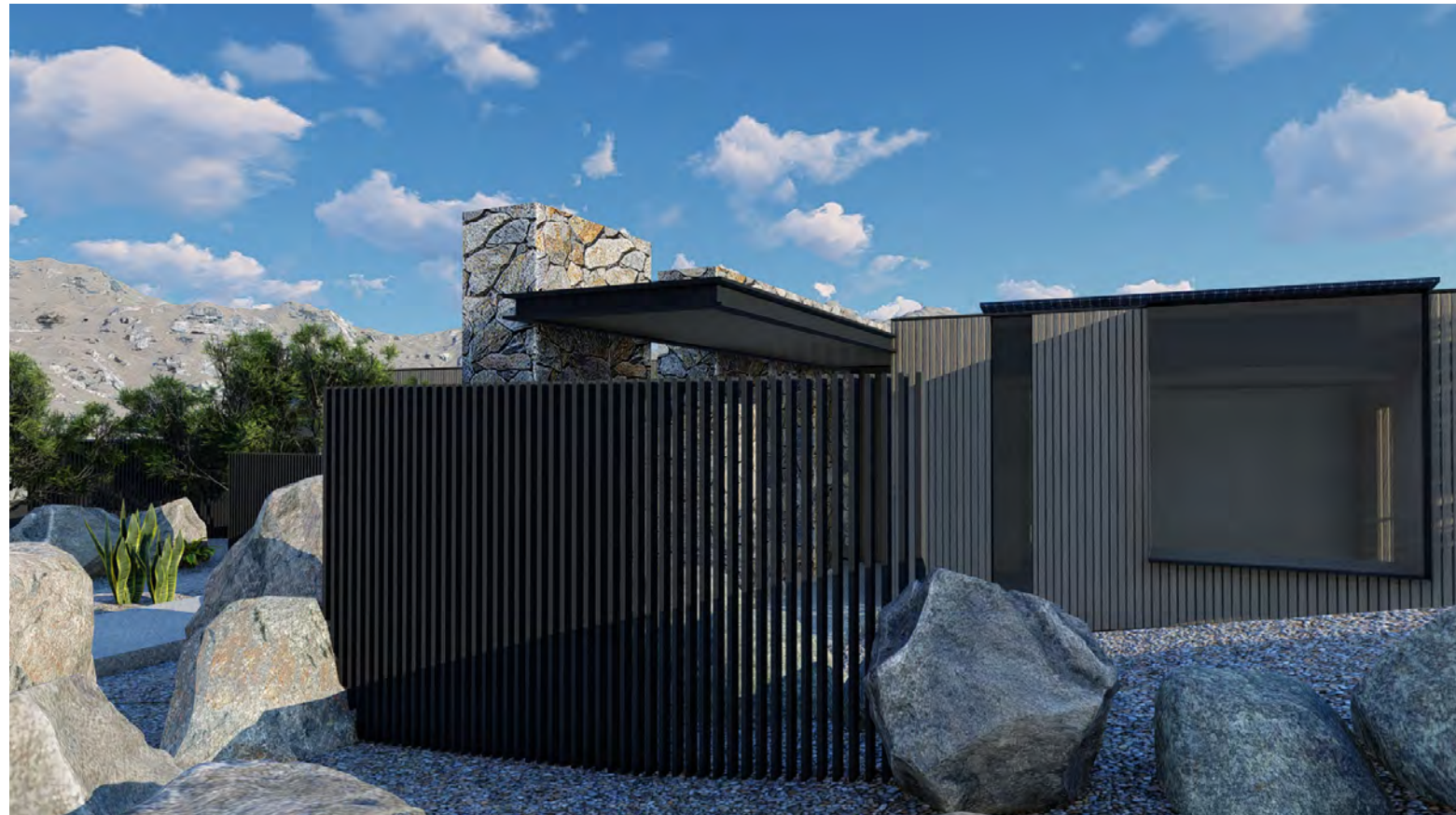
VIEW OF HOUSE FROM THE POOL



VDETAILS OUTSIDE LIVING AREA



VIEW OF STAIRCASE AND GUEST BEDROOMS



VIEW OF MAIN ENTRANCE TO THE HOUSE



VIEW FROM LIVING LOOKING AT MAIN ENTRANCE



VIEW OF GARAGE ENTRANCE



VIEW FROM MASTER BEDROOM LOOKING AT BACKYARD



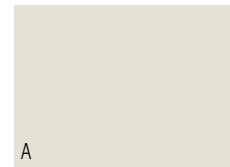
15



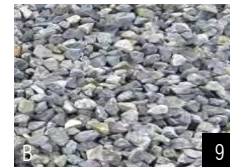
12



7

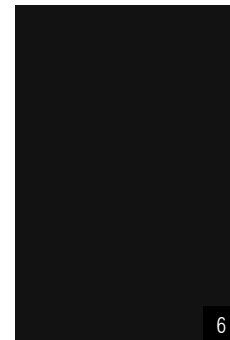


A

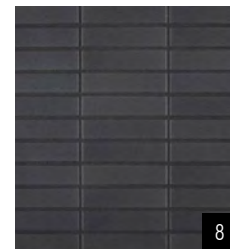


B

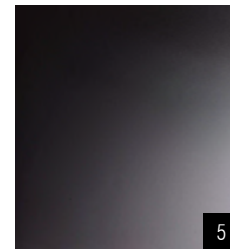
9



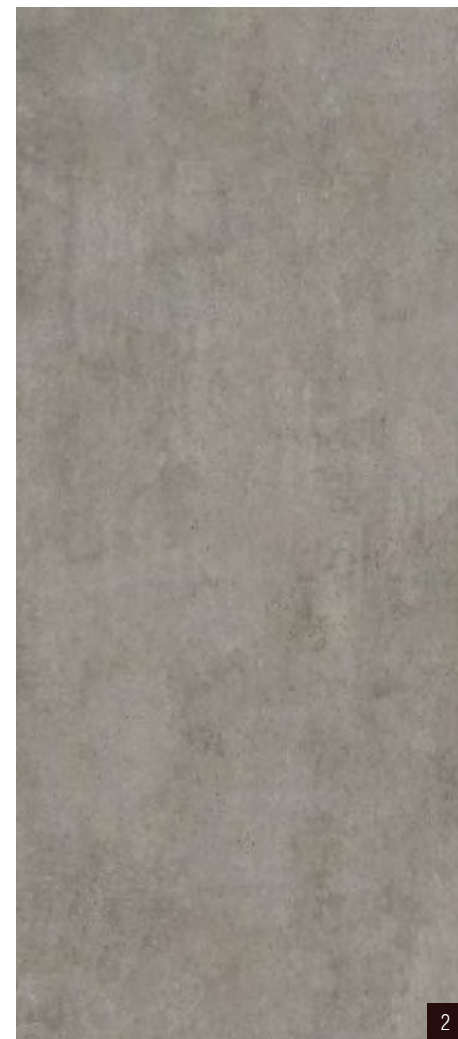
6



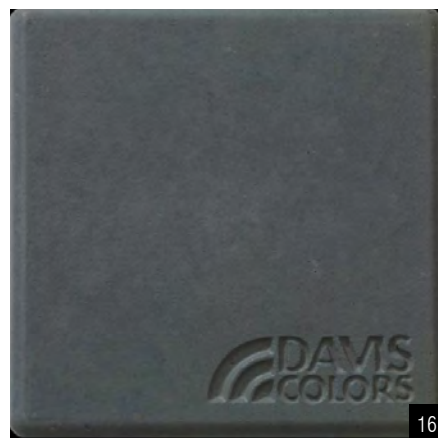
8



5



2



16



14



11



4



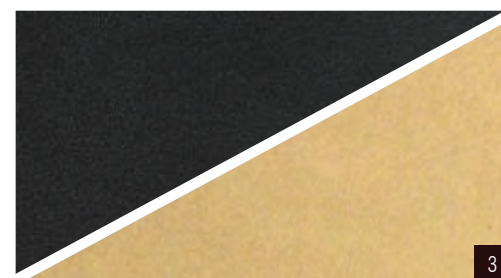
1



13



10



3

MATERIAL LEGEND

- 1 **SMOOTH TEXTURE STUCCO**
 MFR: PAREXUSA
 MODEL: LA HABRA
 PRODUCT: SBMF
 OPTION A:
 COLOR: BASALT
 OPTION B:
 COLOR: TUXEDO
- 2 **CONCRETE FLOOR: POLISHED**
 COLOR: TO MATCH GREY EARTH BY SAPIEN-
 STONE
- 3 **PLUMBING FIXTURE**
 FINISH OPTION A:
 FINISH: BLACK (MATTE OR BRUSHED)
 FINISH OPTION B:
 FINISH: GOLD/ BRASS (MATTE OR
 BRUSHED)
- 4 **GLAZING**
 MFR: GUARDIAN GLASS
 MODEL: SNX 62/27
 COLOR: GREY
- 5 **WINDOW AND SLIDER FRAMES**
 MFR: FLEETWOOD USA
 COLOR: DARK BRONZE ANODIZED
- 6 **METAL EAVE**
 MFR: BERRIDGE
 MODEL: 20 GAUGE - KYNAR 500/ HYLAR 5000
 COLOR: MATTE BLACK
- 7 **POOL PLASTER**
 MFR: PEBBLETEC
 PRODUCT: PEBBLEFINA
 COLOR: DARK STRPMY SEAS
- 8 **POOL WATERLINE TILE**
 MFR: ANN SACKS
 SERIES: SAVOY
 PRODUCT: MEDIUM MOSAICS
 GLAZES: METALLIC
 COLOR: GRAPHITE
 TYPE: FIELD
 DESIGN: STACKED
 ORIENTATION: VERTICAL
- 9 **ROOF MEMBRANE**
 MFR: DURO-LAST
 MODEL: 50 MIL-SINGLE PLY
 COLOR: LIGHT-TAN
 A. BUILT-UP SYSTEM W/GRAVEL BALLAST
 COLOR: COOL GREY
 PRODUCT: 3/8" MINUS GRAVEL
- 10 **GROUND COVER**
 PRODUCT: 3/8" CRUSHED GRAVEL
 COLOR: CHAMOIS BEIGE
- 11 **WOOD DECKING**
 WOOD SPECIES: TEAK, PLANTATION GROWN
 COLOR: STAINED, GREY-WASHED FINISH
- 12 **VERTICAL WOOD SIDING**
 WOOD SPECIES: GARAPA
 COLOR: WHITE-WASHED (BLEACHED)
- 13 **BLACKENED STEEL**
 PRODUCT: 1/4" THICK STEEL PLATE
 FINISH: PAINTED TRICORN
 MFR: SHERWIN WILLIAMS
- 14 **STONE PAVERS**
 MFR: BELGARD
 MODEL: OLD WORLD PAVER
 PRODUCT: VICTORIAN
- 15 **NATURAL STONE WEB WALL**
 MFR: BEUCHEL STONE
 COLOR: BARNWOOD BLUE
 PATTERN: MOSAIC
- 16 **CONCRETE HARDSCAPE COLOR**
 MFR: DAVIS COLOR
 COLOR: LIGHT-GREY 8084
 FINISH A: SAND FINISH
 MFR: DAYTON SUPERIOR
 PRODUCT: TOP-CAST NO.03
 FINISH B: EXPOSED AGGREGATE
 MFR: DAYTON SUPERIOR
 PRODUCT: TOP-CAST NO.50

SITE PHOTOS

DESERT PALISADES LOT 10
2305 WINTER SUN DRIVE
PALM SPRINGS, CA 92262