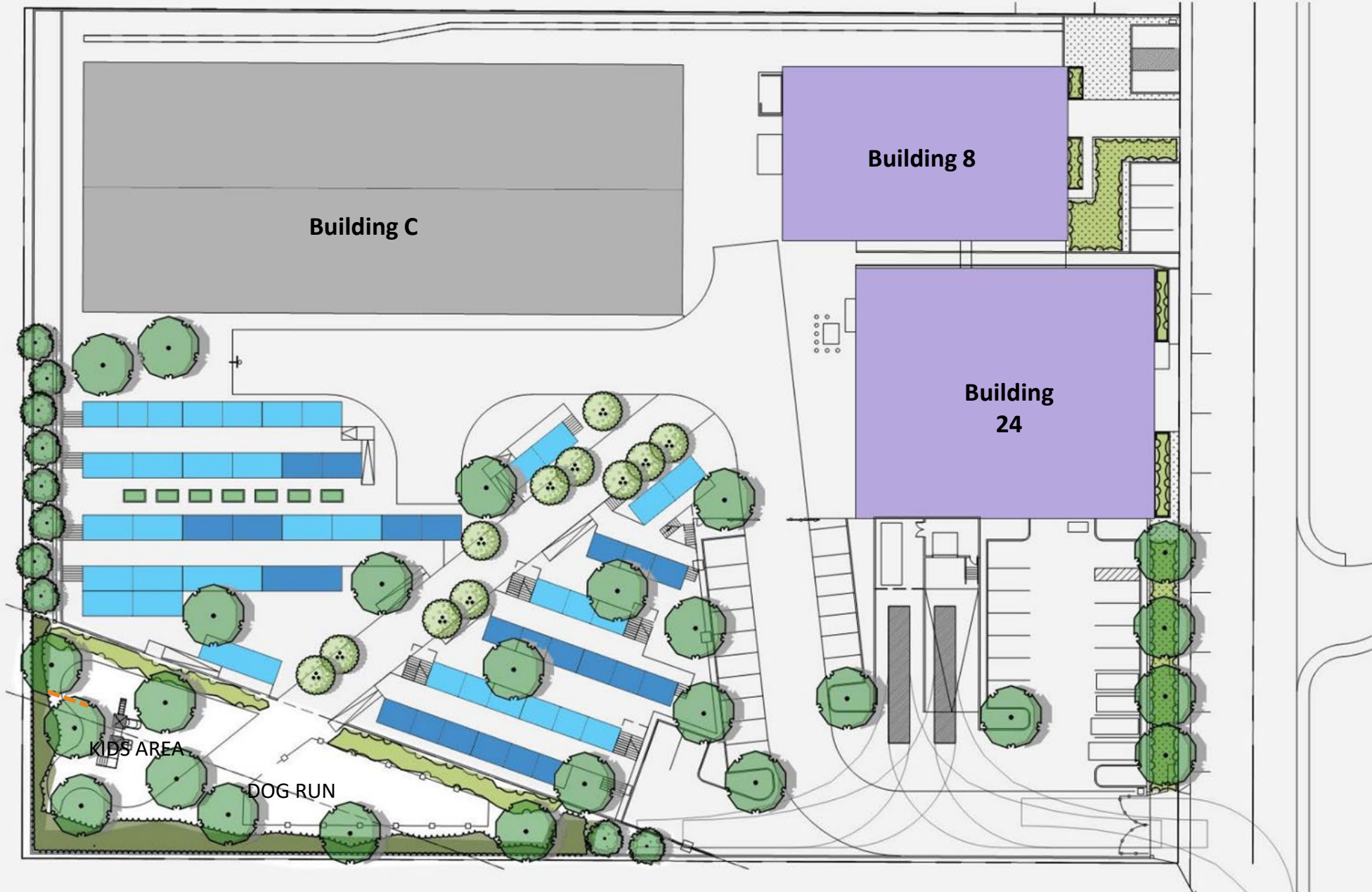


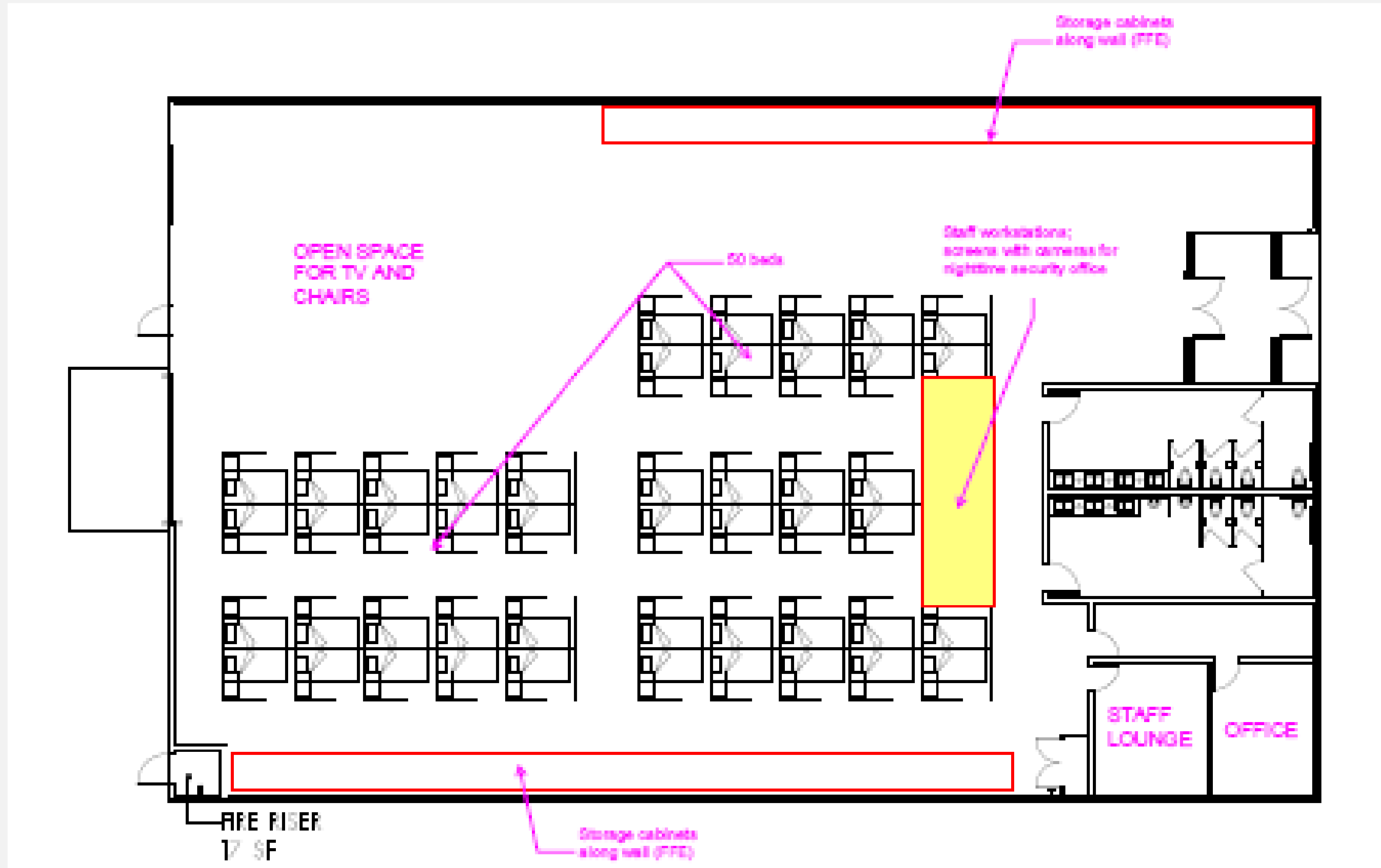
# Palm Springs Navigation Center



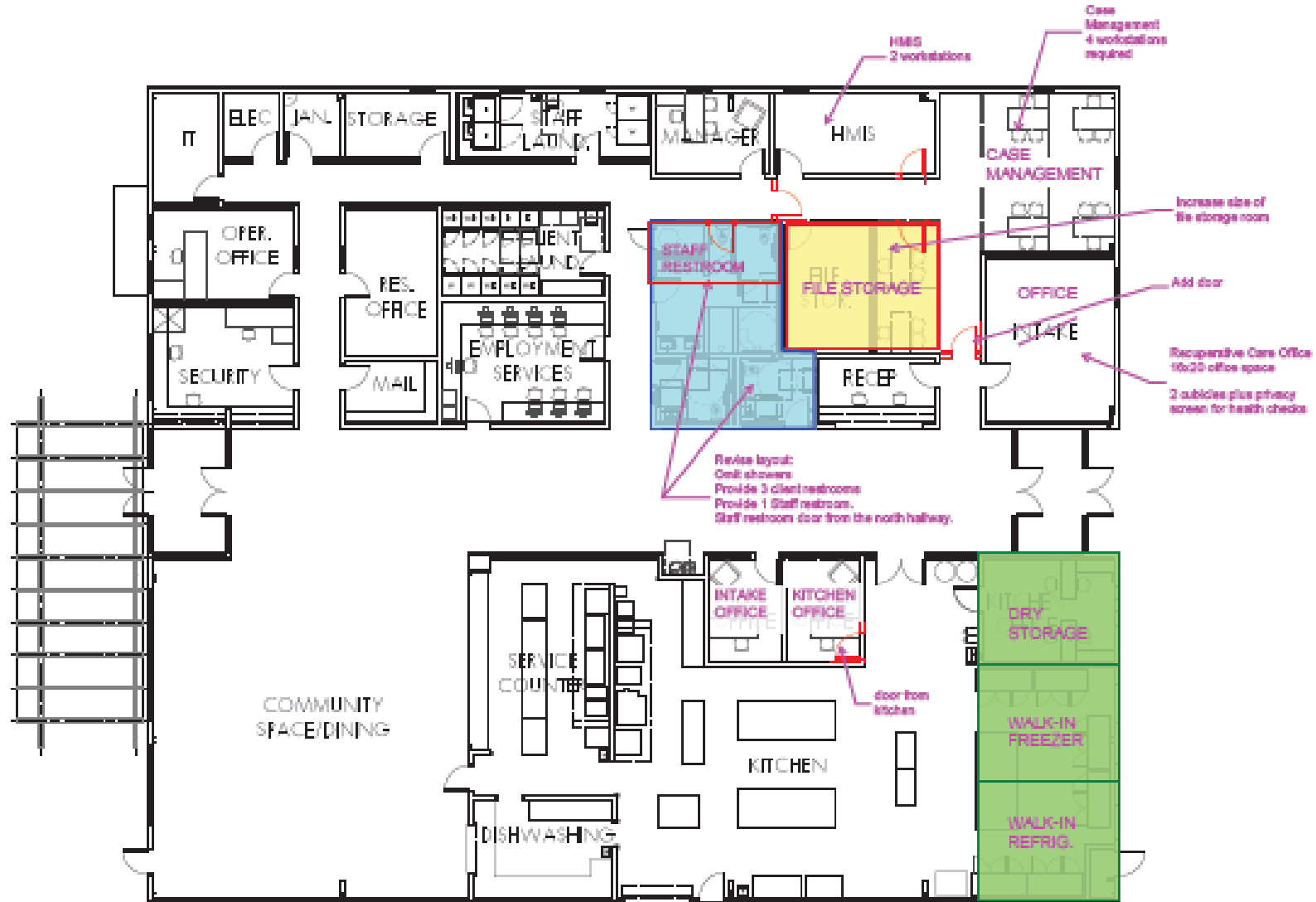
# Site Plan



# Building 8



# Building 24



# Path to Housing



<b>Step 1</b>
El Cielo Emergency Access Center
<ul style="list-style-type: none"> <li>• Complete wraparound services (mobile)</li> <li>• Referral from PD, Access Center staff, County</li> <li>• Walk out/drive out allowed (with staff approval)</li> </ul>

<b>Step 2</b>
McCarthy Navigation Center: Building 8 Dormitory Facilities
<ul style="list-style-type: none"> <li>• 50 Beds (in cubicles)</li> <li>• Complete wraparound services (on site)</li> <li>• Referral required from El Cielo Access Center</li> <li>• May stay up to 180 days (until private unit is available)</li> <li>• Guests transported to and from facility.</li> </ul>

<b>Step 3</b>
McCarthy Navigation Center: Private Units
<ul style="list-style-type: none"> <li>• 80 Residential Units</li> <li>• Complete wraparound services (on site)</li> <li>• Referral required from either El Cielo Access Center or Building C</li> <li>• May stay up to 365 days (until permanent housing is available)</li> <li>• Guests transported to transit facilities (or drive out allowed with staff approval)</li> </ul>

<b>Step 4</b>
Permanent Housing
<ul style="list-style-type: none"> <li>• Monarch Apartments</li> <li>• Vista Sunrise II</li> <li>• Aloe at Palm Canyon</li> <li>• Section 8</li> <li>• Housing Vouchers</li> </ul>





105

R

O

D



L

K

E

F











228

227

226

127

126







Palm  
Springs  
Navigation  
Center

