



AIRPORT COMMISSION SPECIAL MEETING AGENDA
 Airport Conference Room, Palm Springs International Airport
 3400 E. Tahquitz Canyon Way, Palm Springs, CA 92262
 Thursday, September 12, 2024 – 9:00am to 5:00 P.M.

To view/listen/participate virtually in the meeting live, please contact Andrew LeCompte at andrew.lecompte@palmsspringsca.gov or the following telephone number (760) 318-3832 to register for the Zoom meeting. There will be an email with Zoom credentials sent after registration is complete, in order to access the meeting and offer public comment. Registration is not required to attend the meeting in person.

In addition, the meeting will also be teleconferenced pursuant to Government Code Section 54953 from the following location(s):

TELECONFERENCE LOCATION(S):

Commissioner Bryan Ebensteiner – Palm Springs 224 Hawthorne St. Brooklyn, New York 11225	
--	--

Each location is accessible to the public, and members of the public may address the Airport Commission from any of the locations listed above. Any person who wishes to provide public testimony in public comments is requested to file a speaker card before the Public Comments portion of the meeting. You may submit your public comment to the Airport Commission electronically. Material may be emailed to: andrew.lecompte@palmsspringsca.gov - Transmittal prior to the start of the meeting is required. Any correspondence received during or after the meeting will be distributed to the Airport Commission and retained for the official record.

To view Airport Commission meeting videos click on [YouTube](#).

City of Palm Springs:		Riverside County:	City of Cathedral City:	City of Palm Desert:
Kevn J. Corcoran – Chair	David Feltman	Margaret Park	Christian Samlaska	Kevin Wiseman
Dave Banks	J Craig Fong	City of Indian Wells:	City of Coachella:	City of Rancho Mirage:
Todd Burke – Vice Chair	Ken Hedrick	Robert Berriman	Denise Delgado	Keith Young
Daniel Caldwell	Tracy Martin	City of La Quinta:	City of Desert Hot Springs:	City of Indio:
Bryan Ebensteiner	Samantha McDermott	Geoffrey Kiehl	Jan Pye	Rick Wise
Palm Springs City Staff				
Scott C. Stiles	Harry Barrett Jr., A.A.E.		Jeremy Keating	
City Manager	Airport Executive Director		Assistant Airport Director	

- 1. CALL TO ORDER – PLEDGE OF ALLEGIANCE**
- 2. POSTING OF AGENDA**
- 3. ROLL CALL**
- 4. ACCEPTANCE OF AGENDA**
- 5. PUBLIC COMMENTS:** Limited to three minutes on any subject within the purview of the Commission
- 6. DISCUSSION AND ACTION ITEMS:**
 - 6.A** Strategic Plan Workshop
 - 6.B** Master Plan Workshop
 - 6.C** CIP Programming Workshop
- 7. COMMISSIONERS REQUESTS AND REPORTS**

ADJOURNMENT:

The Airport Commission will adjourn to a Regular Meeting on September 18, 2024, at 5:30 P.M.

AFFIDAVIT OF POSTING

I, Harry Barrett, Jr., Airport Executive Director, City of Palm Springs, California, hereby certify this agenda was posted on September 9, 2024, in accordance with established policies and procedures.

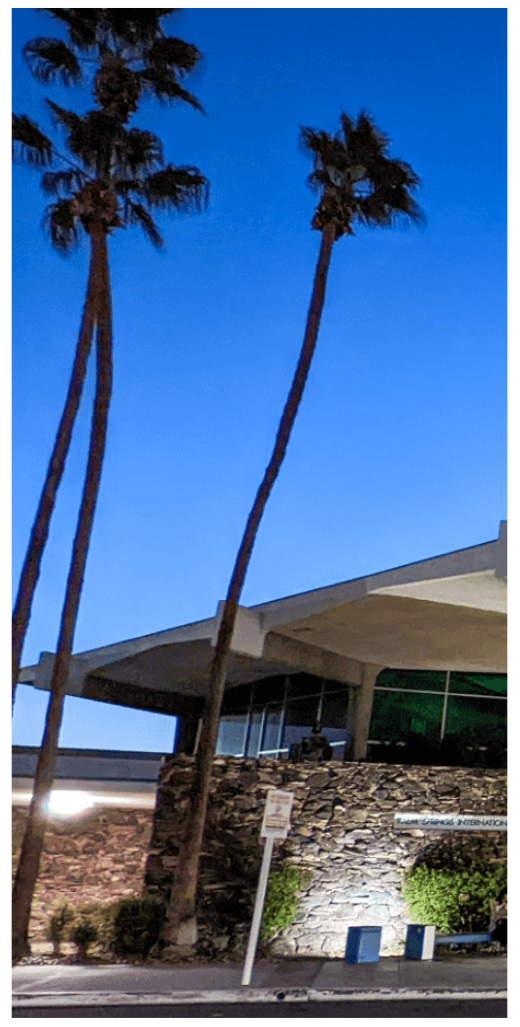
PUBLIC NOTICES

Pursuant to G.C. Section 54957.5(b)(2) the designated office for inspection of records in connection with the meeting is the Office of the City Clerk, City Hall, 3200 E. Tahquitz Canyon Way. Complete Agenda Packets are available for public inspection at: City Hall Office of the City Clerk. Agenda and staff reports are available on the City’s website www.palmspringsca.gov. If you would like additional information on any item appearing on this agenda, please contact the Office of the City Clerk at (760) 323-8204.

It is the intention of the City of Palm Springs to comply with the Americans with Disabilities Act (ADA) in all respects. If, as an attendee or a participant at this meeting, or in meetings on a regular basis, you will need special assistance beyond what is normally provided, the City will attempt to accommodate you in every reasonable manner. Please contact the Department of Aviation, (760) 318-3800, at least 48 hours prior to the meeting to inform us of your particular needs and to determine if accommodation is feasible.

Airport Commission Special Meeting
September 12, 2024 - 9:00am to 5:00pm
Strategic Plan, Master Plan, and CIP Programming Workshop
Agenda

TIME	TOPIC & ACTIVITIES	DISCUSSION LEADS
9:00 - 9:05am	Welcome & Opening Remarks	Kevin Corcoran Harry Barrett
9:05 - 9:35am	Session Agenda and Strategic Plan Overview <i>Objective: To set the stage for the session by: (1) quickly highlighting planned agenda activities; (2) providing an overview and update on the development of PSP's 5-Year Strategic Plan.</i>	Paul Clark - InterVISTAS
9:35 - 10:35am	Input on Emerging Vision, Mission and Values for PSP <i>Objective: To review and then receive input from the Commission on the emerging and proposed vision, mission and values that will be key elements of the 5-Year Strategic Plan.</i>	Paul Clark- InterVISTAS Commission
10:35 - 10:45am	Break	
10:45 - 11:45am	Input on Emerging 5-Year Strategic Priorities for PSP <i>Objective: To review and then receive input from the Commission on the emerging and proposed strategic priorities that will be pursued in driving the 5-Year Strategic Plan forward.</i>	Paul Clark - InterVISTAS Commission
11:45 - 11:55am	Next Steps <i>Objective: To share the 3-month plan on immediate and longer-term initiatives and milestones from September through to Strategic Plan completion in December 2024.</i>	Paul Clark - InterVISTAS Harry Barrett
11:55am – 12:15pm	Q&A /Commissioner Feedback	Commission Airport Staff Paul Clark - InterVISTAS
12:15 - 12:20pm	Closing Remarks	Kevin Corcoran
12:20 – 1:00pm	Lunch Break	
1:00 – 1:30pm	Master Plan Workshop <i>Objective: To review CONRAC, traffic analysis, and long-term parking.</i>	Ryan Hayes – Mead & Hunt Stephanie Nikho – Mead & Hunt Harry Barrett
1:30 – 2:55pm	Q&A /Commissioner Feedback	Commission Airport Staff Ryan Hayes – Mead & Hunt Stephanie Nikho – Mead & Hunt
2:55 – 3:00pm	Closing Remarks	Kevin Corcoran
3:00 – 3:10pm	Break	
3:10 – 3:40pm	Capital Planning/Program Schedule Introduction <i>Objective: To introduce the Capital Planning/Program Schedule.</i>	Josh Cohn – InterVISTAS Airport Staff
3:40 – 5:00pm	Q&A /Commissioner Feedback	Commission Airport Staff Josh Cohn - InterVISTAS



Palm Springs International Airport Airport Commission Meeting

Session 1: PSP 2025-2029 Strategic Plan Update & Workshop

September 12, 2024



ITEM 6.A



Welcome & Opening Remarks

Kevin Corcoran & Harry Barrett Jr.

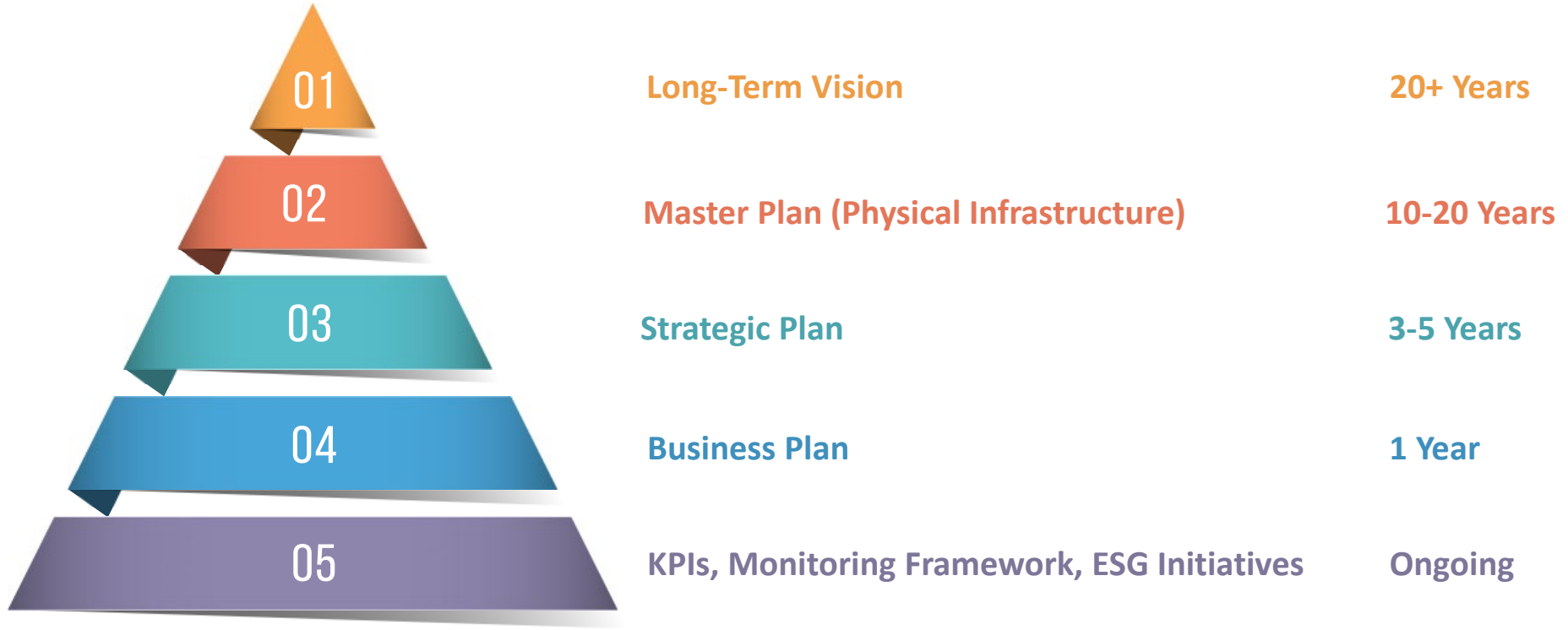
Session Agenda and Strategic Plan Overview

Paul Clark

Session 1 Agenda: Wednesday, September 12

TIME	TOPIC & ACTIVITIES	DISCUSSION LEADS
9:00am - 9:05am	Welcome & Opening Remarks	Kevin Corcoran Harry Barrett Jr.
9:05am - 9:35am	Session Agenda and Strategic Plan Overview <i>Objective: To set the stage for the session by: (1) quickly highlighting planned strategic plan agenda activities; (2) providing an overview and update on the development of PSP's 5-Year Strategic Plan.</i>	Paul Clark - InterVISTAS
9:35am - 10:35am	Input on Emerging Vision, Mission and Values for PSP <i>Objective: To review and then receive input from the Commission on the emerging and proposed vision, mission and values that will be key elements of the 5-Year Strategic Plan.</i>	Paul Clark- InterVISTAS Commission
10:35am - 10:45am	BREAK	
10:45am - 11:45am	Input on Emerging 5-Year Strategic Priorities for PSP <i>Objective: To review and then receive input from the Commission on the emerging and proposed strategic priorities being considered driving the 5-Year Strategic Plan forward.</i>	Paul Clark - InterVISTAS Commission
11:45am - 11:55am	Next Steps <i>Objective: To share the 3-month plan on immediate and longer-term initiatives and milestones from September through to Strategic Plan completion in December 2024.</i>	Paul Clark - InterVISTAS Harry Barrett Jr.
11:55am - 12:15pm	Q&A /Commissioner Feedback	Commission Airport Staff Paul Clark - InterVISTAS
12:15 - 12:20pm	Closing Remarks on Strategic Plan Session	Kevin Corcoran

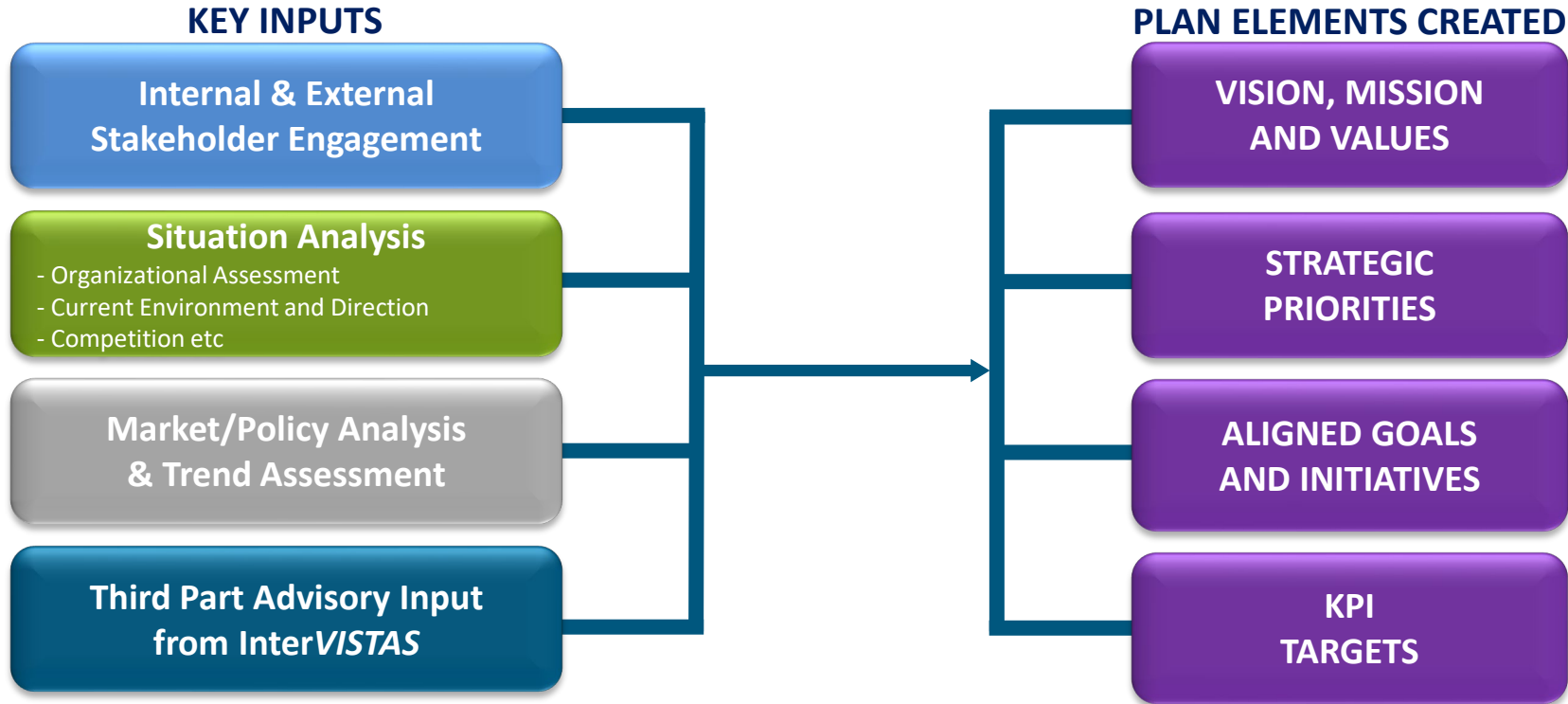
Hierarchy of Organizational Management Planning



Framework Elements of the PSP 2025-2029 Strategic Plan



Process on Strategic Plan Development for PSP



Structure of PSP 2025-2029 Strategic Plan

PSP INTENT OVER 5 YEARS

VISION

MISSION

VALUES

STRATEGIC PRIORITIES

TYPICALLY FOUR TO FIVE STRATEGIC PRIORITIES TO CONSIDER & FINALIZE

Theme Examples:

- Business Growth
- People and Culture
- Org. Transformation
- Innovation
- Community Advancement
- Stewardship & Sustainability etc.

ALIGNMENT & IMPLEMENTATION

GOALS

INITIATIVES

KPIs OVER 5 YEARS

ONGOING MEASUREMENT & MONITORING

Stakeholder Engagement on PSP Strategic Plan: Approach

GROUP

METHOD

PRIMARY INPUT

Airport Commission

Group Strategy Session

Vision, Mission, Priorities,
Organizational Relationships

Management Team

1-on-1 Interviews,
Group Strategy Sessions,
Draft Plan Reviews

Vision, Mission, Values,
Priorities, Goals,
Initiatives, Targets

PSP Staff

Survey,
Regular Input

Vision, Mission, Values,
Plan Aspirations

Other Key
Internal & External
Stakeholders

1-on-1 Interviews,
PSP Tenants Survey

Priorities, Partnerships,
Organizational Relationships

PSP 2025-2029 Strategic Plan: Program Roadmap

PHASE 1: PROJECT PLANNING & DISCOVERY

- Project Kick Off with PSP Management (Virtual Meeting)
- Document/Research Collection & Review
 - *Past plans, research, business performance data, financial performance data etc.*
- Project Plan Development & Project Roadmap Sign Off
- Q2 Progress Update to City Council (June 2024)

PHASE 2: INITIAL ENGAGEMENT

- 1-on-1 Interviews on Strategic Plan Aspirations: PSP Management
- Staff Survey: (Aug 7, 2024 launch)
- 1-on-1 Interviews with other key Internal & External Stakeholders
 - *city/community/business leaders*
- Engagement Results Review with PSP Management (Virtual Meeting)

PHASE 3: STRATEGY DEVELOPMENT

- PSP Management Session - Design
- 1st PSP Onsite Strategy Session (Aug 13-14, 2024)
 - *Ideal Future, Vision, Mission, Values, Opps and Challenges, Strategic Priorities*
- Airport Commissioners Onsite Session (Sep 12, 2024)
- Q3 Progress Update to City Council (Sep 2024)
- 2nd PSP Onsite Strategy Session (Oct 2, 2024)

PHASE 4: PLAN DEVELOPMENT

- 1st Draft of Plan to PSP (Oct 2024)
- Collection of PSP Goals & Initiatives (Oct/Nov 2024)
- Final Plan Onsite Summary Session with PSP Management (Nov 13, 2024)
- Final Plan Submission to PSP (Dec 2024)
- PSP Plan Approval by City Council (Jan 2025)

May 2024

January 2025

Input on Emerging Vision, Mission and Values for PSP

To review and then receive input from the Commission on the emerging and proposed vision, mission and values that will be key elements of the 5-Year Strategic Plan.

CURRENT VISION STATEMENT:

**“Become the most admired airport
by creating a world-class transportation hub,
loyal passengers, and an enthusiastic workforce.”**

PROPOSED VISION STATEMENT:

**“An admired airport innovator
passionately connecting
Greater Palm Springs to the world.”**

Mission

CURRENT MISSION STATEMENT:

“To provide an unrivaled experience for all who travel through Palm Springs International Airport. We will cultivate an environment that is safe, secure, and as innovative, diverse, and welcoming as the region it serves.”

PROPOSED MISSION STATEMENT:

**“Moving you
with extraordinary service
through our vibrant regional hub.”**

Values

CURRENT VALUES:

“PRIDE: Progress, Responsibility, Integrity, Diversity and Empowerment.”

PROPOSED VALUES:

“PRIDE: Passion, Responsibility, Integrity, Diversity and Exceptionalism.”

PROPOSED VALUES

DRAFT SUMMARY DEFINITIONS

Passion

We are empowered by our passion and pride of place, continuously seeking innovative solutions that advance our region's airport and our unique air travel experience.

Responsibility

We take ownership in our duty to operate safely, sustainably, and ethically, ensuring we positively serve our community, our airport guests, our stakeholders and partners.

Integrity

We are committed to honesty, transparency and doing the right thing in all our activities, building lasting trust with our community, our airport guests, stakeholders and partners.

Diversity

We value and celebrate diverse perspectives and backgrounds, fostering an inclusive environment where every individual we connect with is heard, respected, supported, and empowered.

Exceptionalism

We are dedicated to progress, setting the highest standards as an innovative airport team, consistently delivering exceptional performance, and exceeding expectations.

Break

Input on Emerging 5-Year Strategic Priorities for PSP

To review and then receive input from the Commission on the emerging and proposed strategic priorities that will be pursued in driving the 5-Year Strategic Plan forward.

PROPOSED STRATEGIC PRIORITIES



PRIORITIES

People and Culture

Our people and our positive work culture are at the heart of our success. Empowering, supporting, and celebrating a skilled and diverse team allows us to give the best of ourselves - to each other, our organization and our community.

Operational Excellence

We will pursue ongoing excellence in airport management and operations. Continually enhancing standards in safety, security, guest experience, air services and business development can only be achieved by embracing innovative approaches and processes, implementing enabling technologies, and staying effective, efficient and fiscally astute in all endeavors.

Partnerships

We will maximize and leverage our key partnerships with all aviation and travel partners and community stakeholders, focusing on improving operational efficiency, expanding our services, driving innovation, and developing our workforce. Working closely with our partners, we aim to elevate the travel experience and advance progressive solutions.

Infrastructure

We will prioritize the development and modernization of our infrastructure to meet future demand, create community opportunity, and enhance guest satisfaction. Yet we continue to honor the historical architecture and mid-century modern ambiance of our facility. By expanding and upgrading our airport, we will create a dynamic travel environment while connecting our iconic past and our vibrant future.

Sustainability

We will reduce our environmental impact and be operationally resilient to weather extremes. We will drive prosperity, ensuring financial sustainability while remaining resilient to economic volatility. We will be an active social sustainability partner in a thriving, healthy, equitable, connected and livable region.

DRAFT SUMMARY DEFINITIONS

REVIEW OF PROPOSED STRATEGIC PRIORITIES



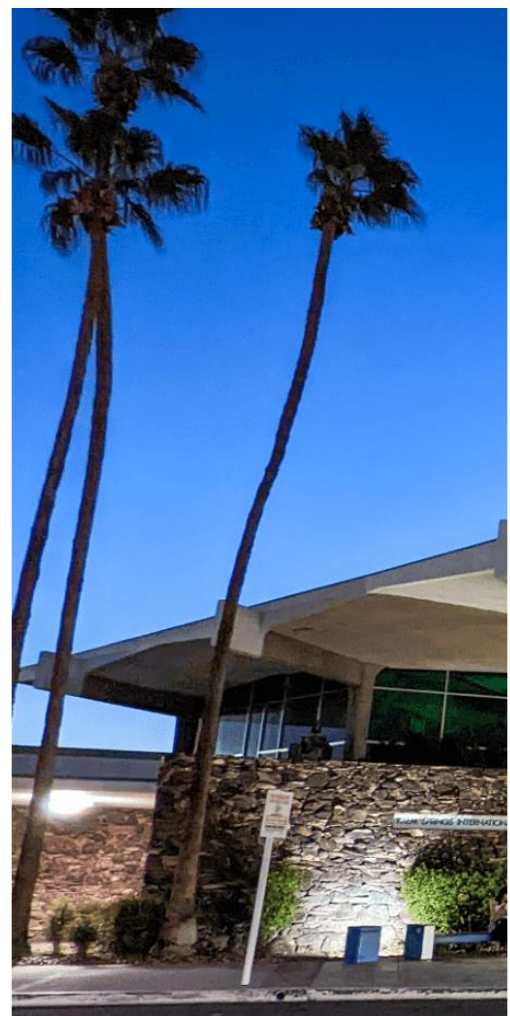
Next Steps

To share the 3-month plan on immediate and longer-term initiatives and milestones from September through to Strategic Plan completion in December 2024.

Q&A / Commissioner Feedback

Closing Remarks on Strategic Plan Session

Kevin Corcoran



Palm Springs International Airport Capital Planning / Program Schedule Introduction

September 12, 2024



Item 6.C



Project goals

- 1 Determine the primary goals to be achieved within the next five years
- 2 Define a five-year capital improvement plan that meets the needs of users and tenants
- 3 Identify the sequencing of activities that are needed to implement the capital plan
- 4 Pinpoint major project milestones and actions that need to be accomplished

Guiding Principles for Preparing a Sensible Capital Plan



Airfield infrastructure is maintained to promote a safe operating environment



Enhance the passenger experience by increasing capacity of key facilities



Progress towards reducing airport emissions and being good environmental stewards for the community

Our starting point . . .

Start



Incorporated known projects the airport needs to complete

Incorporated 5-year Master Plan projects



Bundled and decoupled work items into defined projects



Categorized projects into specific functional areas

Capital Improvement Program Categories



Airfield Infrastructure

Runways, taxiways, security & safety



Terminal

Projects related to the terminal



Landside Infrastructure

Parking and non-aeronautical development



Airport Facilities

Hangars and support facilities



Airport Fleet Vehicles

ARFF & operational vehicles



Planning, Environmental & Contingency

Airport-wide assignments

5-Year Capital Planning Category Snapshot

Airfield Infrastructure: Runways, taxiways, security & safety

NUMBER OF PROJECTS:

14

PROJECTED CATEGORY COSTS:

\$100 Million

KEY PROJECTS:

Runway 13R-31L Rehabilitation & Taxiway Connectors
Rehabilitate Commercial Aircraft Parking Apron Around Terminal
Remain Overnight (RON) Parking

5-YEAR OBJECTIVES:

Enhance safety
Preserve assets
Provide additional capacity

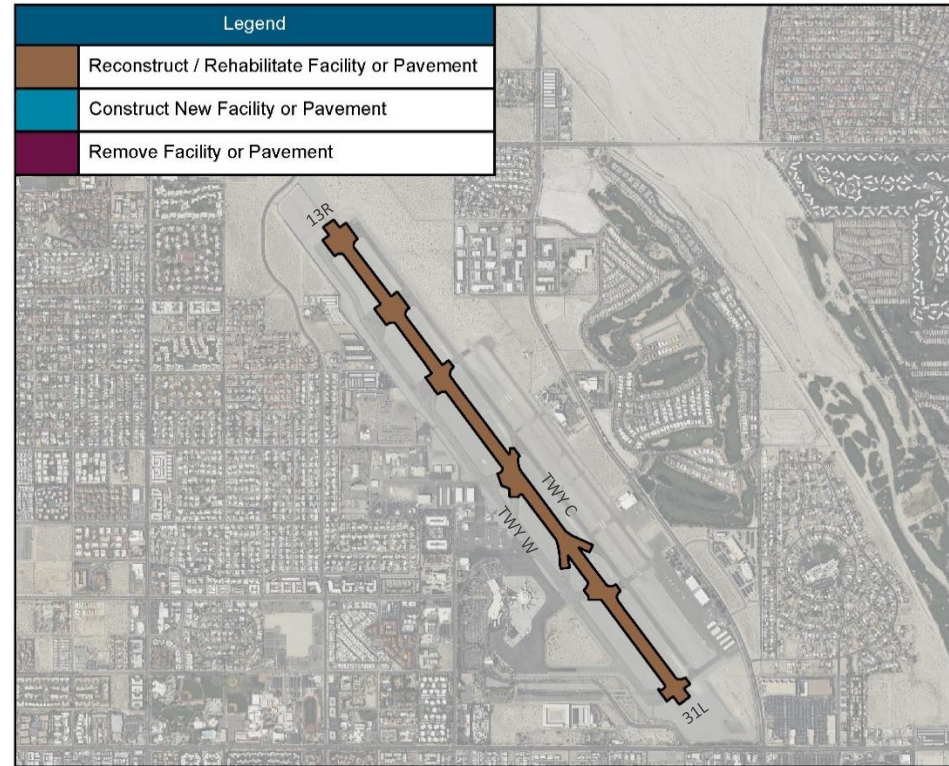
Runway 13R-31L Rehabilitation & Taxiway Connectors

Project Description:

- + Rehabilitation and reconstruction of Runway 13R-31L, covering 1.5 million square feet
- + Include the rehabilitation of all connector taxiways leading to parallel Taxiways W and C
- + Geometric improvements to meet current FAA design standards

Project Justification:

- + Ensure pavement integrity for safe operations and protect the capital investments by airport staff and FAA



Rehabilitate Commercial Aircraft Apron Around Terminal

Project Description:

- + Rehabilitation of the terminal apron around the Agua Caliente Concourse
- + Project covers approximately 380,000 square feet of asphalt pavement
- + Applying sealant and seal coat, with more extensive repairs where required

Project Justification:

- + The commercial aircraft parking apron in this area is distressed and weakening, requiring corrective action to ensure a safe and efficient operating environment



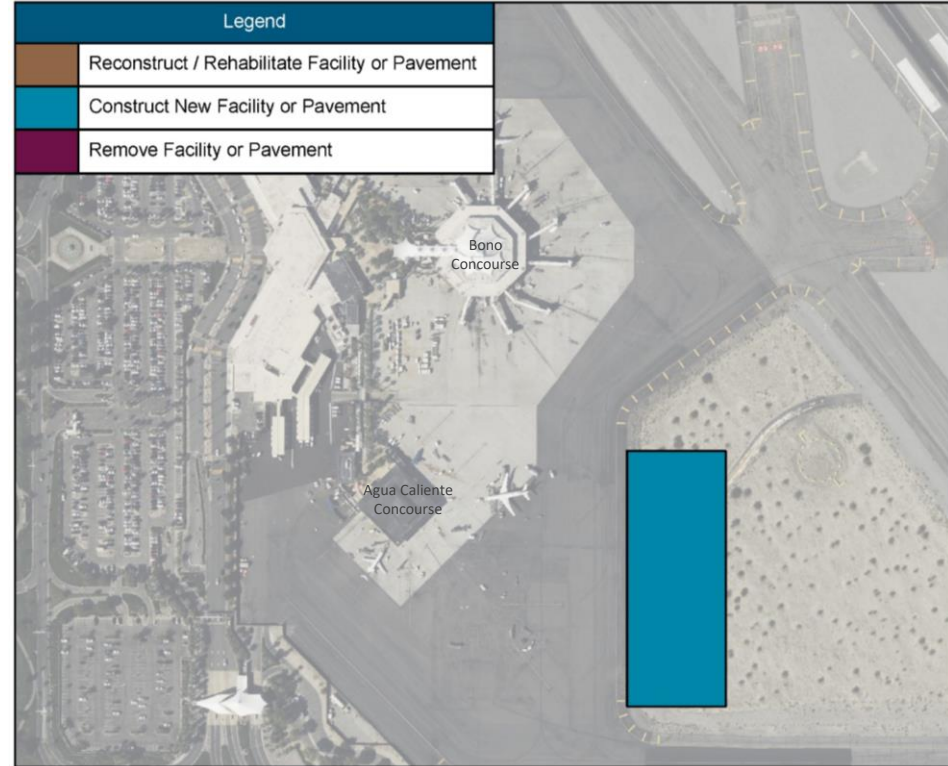
Remain Overnight (RON) Parking

Project Description:

- + Construct 150,000-square-foot Remain Overnight (RON) apron
- + RON apron located east of the terminal area
- + Apron will use Portland Cement Concrete (PCC) in high-load areas and asphalt pavement in circulation

Project Justification:

- + Increase the airport's capacity to accommodate additional aircraft
- + Reduce apron congestion



5-Year Capital Planning Category Snapshot

Terminal: Projects related to the terminal

NUMBER OF PROJECTS:

28

PROJECTED CATEGORY COSTS:

\$594 Million*

* Includes Terminal Phase 1 at \$423 million

KEY PROJECTS:

Inbound Arrivals Baggage Claim**

Outbound Baggage Handling System**

Terminal Restroom Remodel**

** projects in progress

5-YEAR OBJECTIVES:

Replace aging infrastructure

Enhance the passenger experience

Provide additional capacity

5-Year Capital Planning Category Snapshot

Landside Infrastructure: Parking and non-aeronautical development

NUMBER OF PROJECTS:

13

PROJECTED CATEGORY COSTS:

\$467 Million*

*Includes ConRAC at \$448 million

KEY PROJECTS:

GTC design/renovation
Employee Parking Lot
Economy Lot

5-YEAR OBJECTIVES:

Enhance operations
Preserve assets
Provide additional capacity

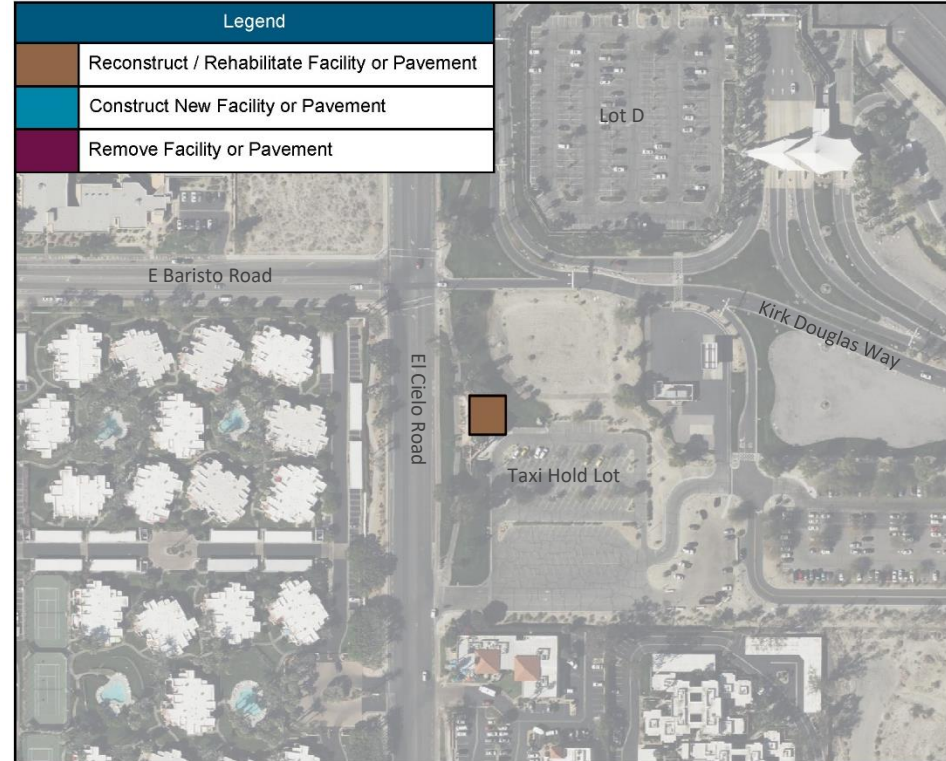
GTC Design/Renovation

Project Description:

- + Design and renovate the GTC to relocate the airport security and badging offices
- + No building expansion

Project Justification:

- + Improve operational efficiency and staff productivity by relocating airport security and badging offices
- + Create a more cohesive and effective work environment



5-Year Capital Planning Category Snapshot

Airport Facilities: hangars and support facilities

NUMBER OF PROJECTS:

9

PROJECTED CATEGORY COSTS:

\$142 Million

KEY PROJECTS:

Signature Terminal & Apron Relocation
ARFF Station

5-YEAR OBJECTIVES:

Unlock future terminal development
Enhance safety
Provide additional capacity

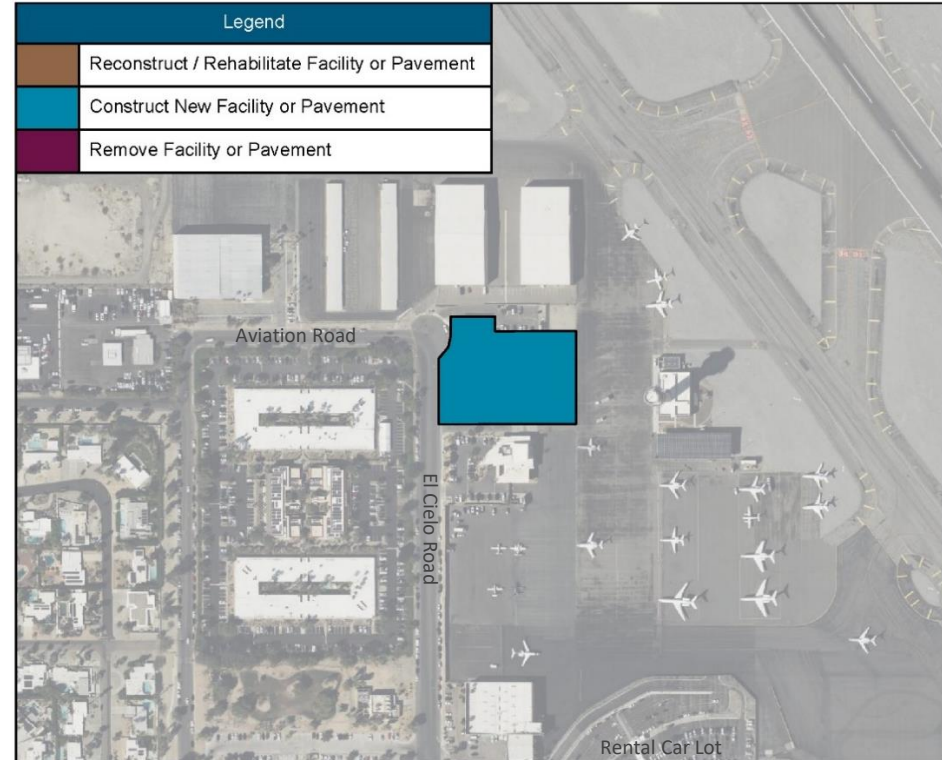
ARFF Station

Project Description:

- + Design and construct a new Aircraft Rescue and Firefighting (ARFF) Station to meet Part 139 requirements
- + Three potential ARFF Station locations on the west side of the airport near Aviation Road and El Cielo Road
- + 23,000 SF building

Project Justification:

- + Meet Part 139 requirements and enhance emergency response capabilities, improving safety for aircraft and passengers



5-Year Capital Planning Category Snapshot

Airport Fleet Vehicles: ARFF & operational vehicles

NUMBER OF PROJECTS:

9

PROJECTED CATEGORY COSTS:

\$7 Million

KEY PROJECTS:

- Procure zero emission vehicles
- New paint truck
- Rubber removal/paint removal equipment

5-YEAR OBJECTIVES:

- Environmental stewardship
- Enhanced passenger experience

5-Year Capital Planning Category Snapshot

Planning, Environmental & Contingency: airport-wide assignments

NUMBER OF PROJECTS:

4

PROJECTED CATEGORY COSTS:

\$33 Million

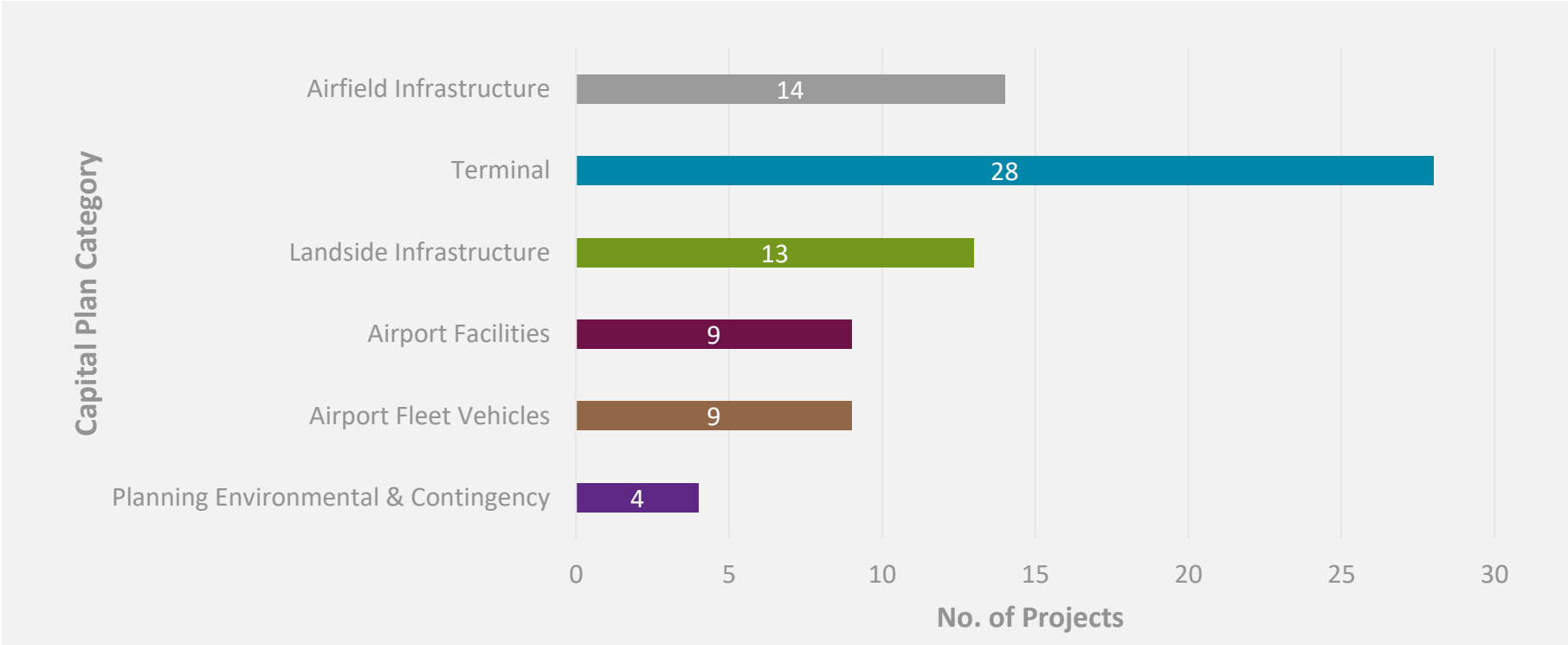
KEY PROJECTS:

Land acquisition: 8.06 acres between Kirk Douglas Way & Ramon
Airport Drainage Master Plan
CoGen Utilities Improvement/Central Utility Plant

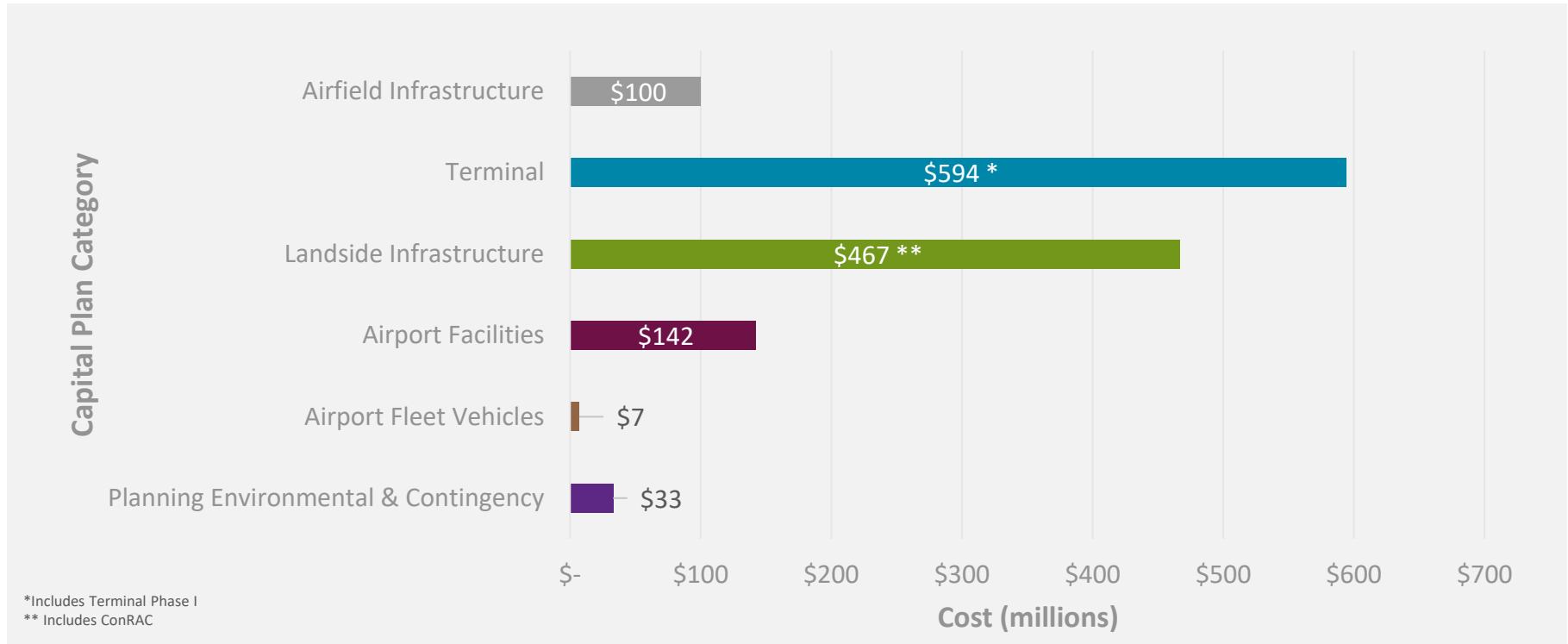
5-YEAR OBJECTIVES:

Provide additional capacity
Enhance project implementation

5-Year Capital Plan Summary – No. of Projects



5-Year Capital Plan Summary – Total Cost



Defining an Implementing Program Schedule



Be mindful of limited staff resources and make sure the plan is realistic given the available staff



Identify the key activities and milestones throughout the project's duration

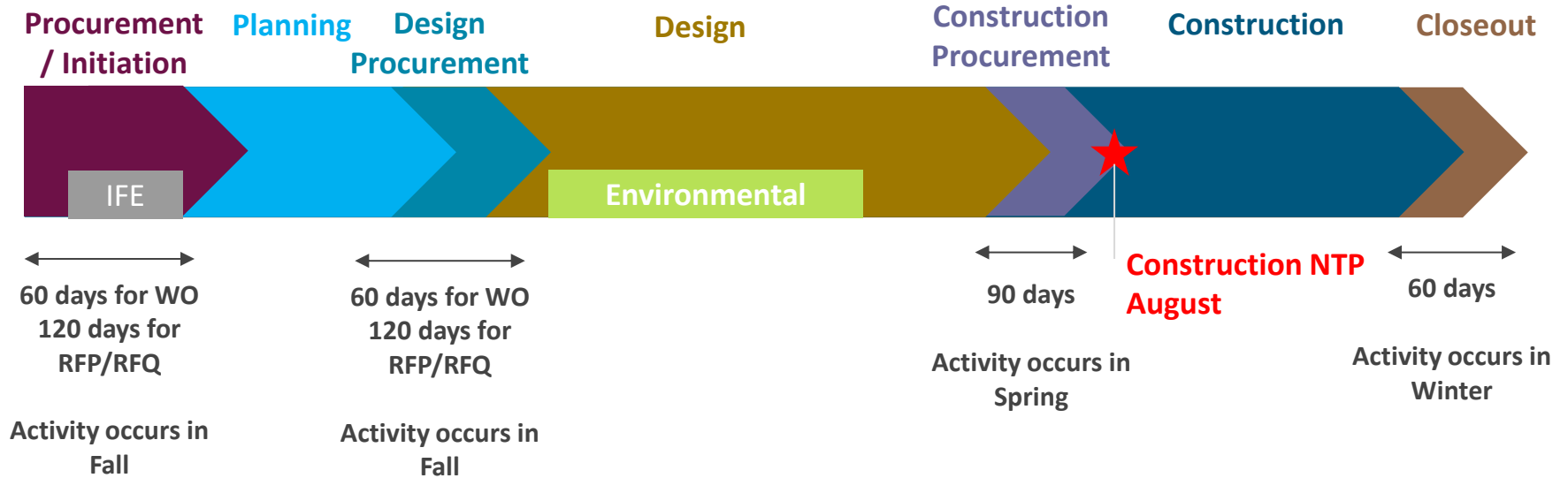


Understand the project dependencies and how changes in one schedule might impact others



Provide a roadmap with actionable steps for airport staff to implement

Project Lifecycle



★ Milestone

Key Dates for AIP

August 1st

Environmental determinations should be provided to FAA

January 31st

Update and submit 5-year Airport CIP to FAA

April 1st

Project excepting discretionary funding should be ready to bid

December 29th

Pre-app FAA grant applications / Final Application (End Jan.)

May 15th

All AIP projects should be ready to bid

Detailed Program Schedule Snapshot



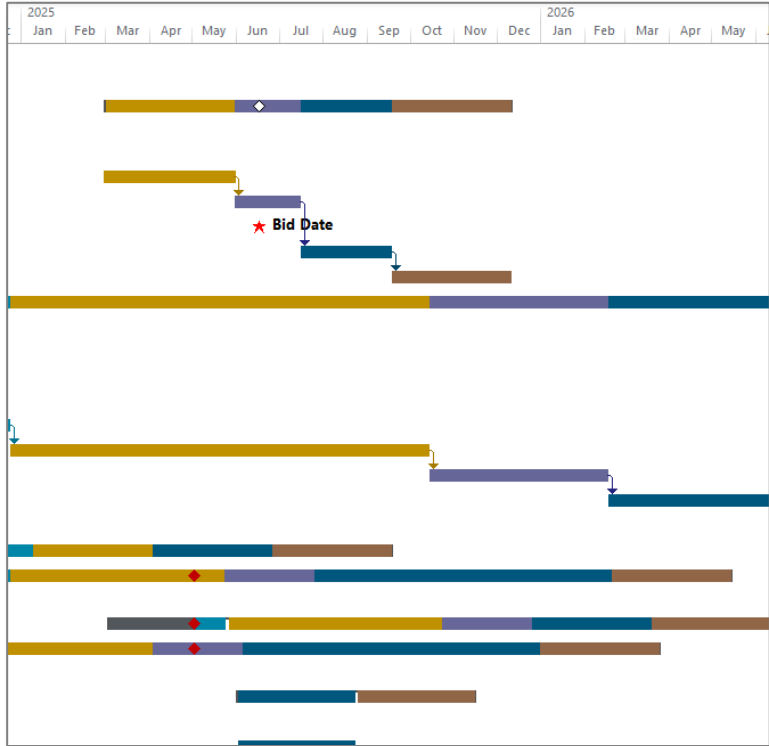
Over 400 lines to capture various activities and milestones

Select Project Schedules

Project	Dates	2025	2026	2027	2028	2029	2030
Taxiway W & A1 Rehabilitation		█					
RON Parking		█	█	█	█		
Runway 13R-31L Rehabilitation		█	█	█	█		
Commercial Apron Rehabilitation			█	█	█		
Inbound Arrivals Baggage Claim		█	█	█	█		
Outbound Baggage Handling System		█	█	█	█		
Terminal Restroom Remodel		█	█				
GTC Design/Renovation		█					
ARFF Station				█	█	█	█
Signature Terminal & Apron Replacement		█	█	█	█		

Several major projects will be worked on or started in 2025

Taking the Schedule and Defining Actions




	PROJECT	PHASE	ACTION ITEM / NEXT STEP	ASSIGNED TO	TARGET DATE
1	Terminal Area Concept Validation / Phasing	Scope of Services	Review / approve scope of services provided by Consultant	John Doe	7/1/24
2	PFC Application	Application Development	Incorporate comments provided from internal review and discussion with Matt.	John Doe	7/5/24
3	Public Parking Garage	Environmental	Submit Section 163 request.	John Doe	7/10/24
4	Gate C8 PBB	Environmental Component	Complete CATEX and submit to FAA for review.	John Doe	7/5/24
5	Taxilane N Construction	Environmental Component	Complete CATEX and submit to FAA for review.	John Doe	7/5/24
6	Airline Gate Use Analysis	PASSUR Data	Obtain PASSUR software and data. Obtain cost information.	John Doe	7/15/24

- Weekly coordination meetings
- Central spreadsheet
- Dedicated individual to keep up to date
- Shared with the entire PSP team

Example project one-pager

Palm Springs International Airport

Project One-Pager

Project Title:		Project Manager:		NPR:		
Runway 13R/31L Rehabilitation & Taxiway Connectors		Jeremy Keating		82		
Project Description:						
This project involves the design for the rehabilitation and reconstruction of the entire length of Runway 13R-31L, a commercial carrier runway that spans approximately 1.5 million square feet, with dimensions of 10,000 feet in length and 150 feet in width. The project will also cover the rehabilitation and reconstruction of all connector taxiways leading to the parallel taxiways, TWY W and TWY C. Additionally, the project will address wide expansive pavement sections and implement geometric improvements to align with current FAA design standards. The Pavement Condition Index (PCI) ratings for the runway sections are as follows: R13R-01 is rated as Good (PCI 86-100), R13R-02 and R13R-03 are rated as Satisfactory (PCI 71-85), R13R-04 is rated as Good (PCI 86-100), and R13R-05 and R13R-06 are rated as Satisfactory (PCI 71-85).						
Project Justification:						
Runway 13R-31L, the airport's primary runway, requires regular maintenance to seal cracks and rejuvenate its surface. The last significant rehabilitation of Runway 13R-31L took place in XXXX, and the pavement has since exceeded its useful life. Rehabilitation is now necessary to ensure the pavement's integrity for safe and efficient operations, as well as to safeguard the capital investments made by airport staff and FAA in the airfield infrastructure. Additionally, several entrance and exit taxiways exceed FAA design standards in width, causing signage to be positioned farther from pilots, which can diminish situational awareness. This project aims to address these nonstandard conditions to enhance operational safety at PSP.						
Project Schedule:						
<i>Procurement Start Date</i>	<i>Design Start Date</i>	<i>Design End Date</i>	<i>Construction Start Date</i>	<i>Construction End Date</i>	<i>Project End Date</i>	
Feb-25	May-26	Jun-27	Aug-27	Dec-27	Mar-28	
Estimated Costs:						
<i>Preliminary Planning</i>	<i>Design Services</i>	<i>Construction Services</i>	<i>Environmental</i>	<i>Contingency / Escalation</i>	<i>Construction / Equipment</i>	Total Project Cost
\$ -	\$ 1,500,000		\$ 250,000		\$ 31,250,000	\$ 33,000,000
Project Location:			Project Value/Benefit:			
<p>Legend</p> <ul style="list-style-type: none"> Reconstruct / Rehabilitate Facility or Pavement Construct New Facility or Pavement Remove Facility or Pavement 			<input type="checkbox"/> Improve Passenger Experience <input type="checkbox"/> Reduce Operating Costs <input checked="" type="checkbox"/> Replace Failing Infrastructure <input checked="" type="checkbox"/> Government Mandated <input type="checkbox"/> Reduce Staff Time <input checked="" type="checkbox"/> Health/Safety/Security <input type="checkbox"/> Increase Capacity <input type="checkbox"/> Other:			
			<p>AIP Administrative Checklist:</p> <input checked="" type="checkbox"/> Project AIP Eligible <input checked="" type="checkbox"/> ALP Updated <input type="checkbox"/> Airspace Determination <input type="checkbox"/> Environmental Complete <input type="checkbox"/> Design Complete			

Project Title and responsible individual

Project Justification
Include key themes for seeking FAA, State or other funds. Obtain commission/city council approval

Project Schedule

Project location graphic

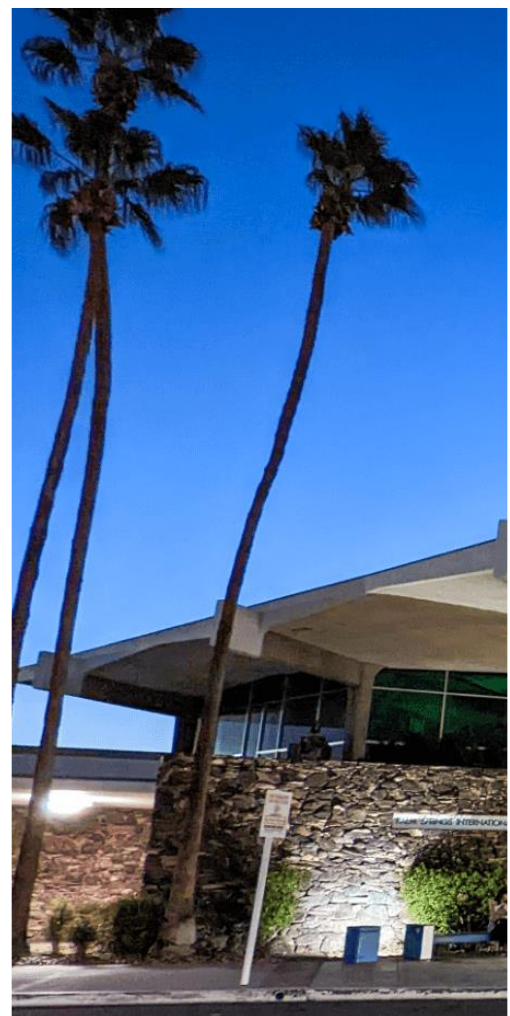
Project Manager & NPR

Project Description
Detailed work items to avoid duplication between projects and to account for specific actions

Estimated Costs
Pull key costs for preparing grant applications

Project Value/Benefits

Tasks needing to be completed to seek an AIP construction grant



Appendix

Capital Improvement Program Project One-Pagers



Palm Springs International Airport Project One-Pager

Project Title:	Project Manager:	NPR:
Runway 13R/31L Rehabilitation & Taxiway Connectors	Jeremy Keating	82

Project Description:
 This project involves the design for the rehabilitation and reconstruction of the entire length of Runway 13R-31L, a commercial carrier runway that spans approximately 1.5 million square feet, with dimensions of 10,000 feet in length and 150 feet in width. The project will also cover the rehabilitation and reconstruction of all connector taxiways leading to the parallel taxiways, TWY W and TWY C. Additionally, the project will address wide expansive pavement sections and implement geometric improvements to align with current FAA design standards. The Pavement Condition Index (PCI) ratings for the runway sections are as follows: R13R-01 is rated as Good (PCI 86-100), R13R-02 and R13R-03 are rated as Satisfactory (PCI 71-85), R13R-04 is rated as Good (PCI 86-100), and R13R-05 and R13R-06 are rated as Satisfactory (PCI 71-85).

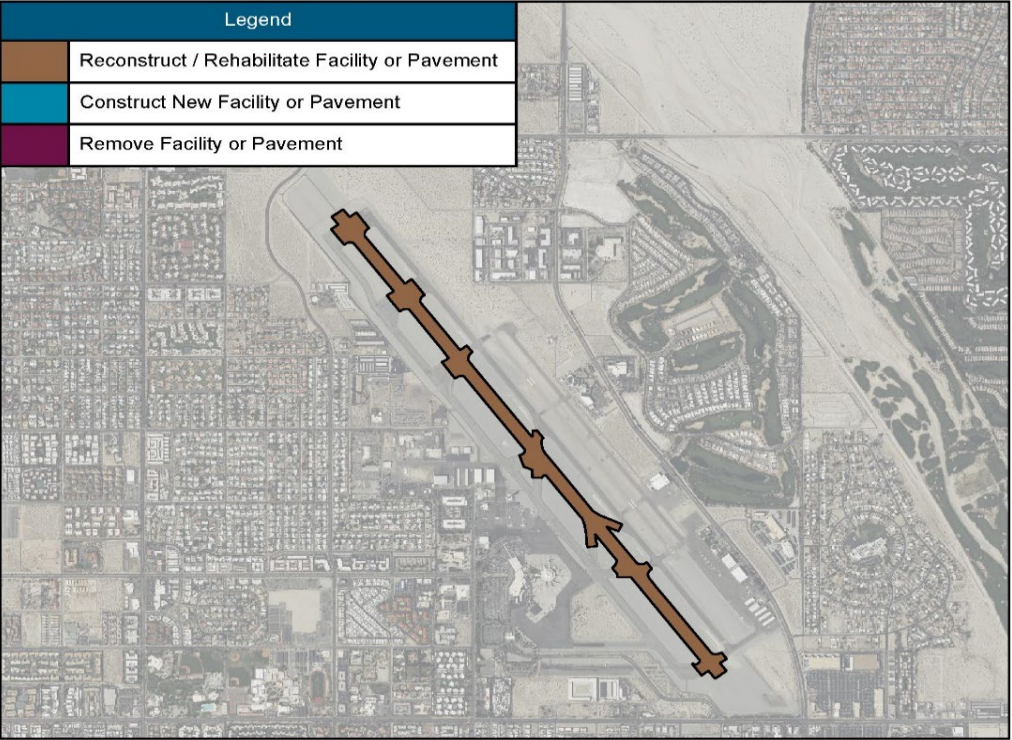
Project Justification:
 Runway 13R-31L, the airport's primary runway, requires regular maintenance to seal cracks and rejuvenate its surface. The last significant rehabilitation of Runway 13R-31L took place several years ago and the pavement has since exceeded its useful life. Rehabilitation is now necessary to ensure the pavement's integrity for safe and efficient operations, as well as to safeguard the capital investments made by airport staff and FAA in the airfield infrastructure. Additionally, several entrance and exit taxiways exceed FAA design standards in width, causing signage to be positioned farther from pilots, which can diminish situational awareness. This project aims to address these nonstandard conditions to enhance operational safety at PSP.

Project Schedule:


Procurement Start Date	Design Start Date	Design End Date	Construction Start Date	Construction End Date	Project End Date
Feb-25	May-26	Jun-27	Aug-27	Dec-27	Mar-28

Estimated Costs:

Preliminary Planning	Design Services	Construction Services	Environmental	Contingency / Escalation	Construction / Equipment	Total Project Cost
\$ -	\$ 1,500,000		\$ 250,000		\$ 31,250,000	\$ 33,000,000

Project Location:	Project Value/Benefit:						
<div style="border: 1px solid black; padding: 5px; margin-bottom: 10px;"> <p style="text-align: center; margin: 0;">Legend</p> <table style="width: 100%; border-collapse: collapse;"> <tr> <td style="width: 20px; height: 15px; background-color: #8b4513; border: 1px solid black;"></td> <td style="font-size: 0.8em; padding: 2px;">Reconstruct / Rehabilitate Facility or Pavement</td> </tr> <tr> <td style="width: 20px; height: 15px; background-color: #0070c0; border: 1px solid black;"></td> <td style="font-size: 0.8em; padding: 2px;">Construct New Facility or Pavement</td> </tr> <tr> <td style="width: 20px; height: 15px; background-color: #800040; border: 1px solid black;"></td> <td style="font-size: 0.8em; padding: 2px;">Remove Facility or Pavement</td> </tr> </table> </div> 		Reconstruct / Rehabilitate Facility or Pavement		Construct New Facility or Pavement		Remove Facility or Pavement	<ul style="list-style-type: none"> <input type="checkbox"/> Improve Passenger Experience <input type="checkbox"/> Reduce Operating Costs <input checked="" type="checkbox"/> Replace Failing Infrastructure <input checked="" type="checkbox"/> Government Mandated <input type="checkbox"/> Reduce Staff Time <input checked="" type="checkbox"/> Health/Safety/Security <input type="checkbox"/> Increase Capacity <input type="checkbox"/> Other:
	Reconstruct / Rehabilitate Facility or Pavement						
	Construct New Facility or Pavement						
	Remove Facility or Pavement						
AIP Administrative Checklist:							
<ul style="list-style-type: none"> <input checked="" type="checkbox"/> Project AIP Eligible <input checked="" type="checkbox"/> ALP Updated <input type="checkbox"/> Airspace Determination <input type="checkbox"/> Environmental Complete <input type="checkbox"/> Design Complete 							

Palm Springs International Airport Project One-Pager

Project Title:		Project Manager:	NPR:											
Rehabilitate Commercial Aircraft Parking Apron Around Terminals		Jeremy Keating	70											
Project Description:														
This project involves the design and construction necessary to rehabilitate the terminal apron surrounding the Agua Caliente Concourse. It will cover approximately 380,000 square feet of asphalt pavement. The project primarily focuses on sealant and seal coat application, with more extensive repairs planned for about 10% of the apron area, which will require complete asphalt replacement.														
Project Justification:														
Palm Springs International Airport continues to experience increased demand from larger aircraft parking around the terminals. The asphalt apron around the Agua Caliente Concourse has begun to show signs of decay. The commercial aircraft parking apron in this area is exhibiting distress and weakness, necessitating corrective action to maintain a safe and efficient operating environment.														
Project Schedule:														
Procurement Start Date	Design Start Date	Design End Date	Construction Start Date	Construction End Date	Project End Date									
Aug-25	Nov-25	Apr-26	Aug-26	Feb-27	May-27									
Estimated Costs:														
Preliminary Planning	Design Services	Construction Services	Environmental	Contingency / Escalation	Construction / Equipment	Total Project Cost								
\$ -	\$ 300,000	\$ -	\$ -	\$ -	\$ 2,700,000	\$ 3,000,000								
Project Location:				Project Value/Benefit:										
<table border="1" style="width: 100%; border-collapse: collapse;"> <thead> <tr style="background-color: #0056b3; color: white;"> <th colspan="2" style="text-align: left;">Legend</th> </tr> </thead> <tbody> <tr> <td style="width: 20px; background-color: #8b4513;"></td> <td>Reconstruct / Rehabilitate Facility or Pavement</td> </tr> <tr> <td style="width: 20px; background-color: #008b8b;"></td> <td>Construct New Facility or Pavement</td> </tr> <tr> <td style="width: 20px; background-color: #800040;"></td> <td>Remove Facility or Pavement</td> </tr> </tbody> </table> 				Legend			Reconstruct / Rehabilitate Facility or Pavement		Construct New Facility or Pavement		Remove Facility or Pavement	<input type="checkbox"/> Improve Passenger Experience <input type="checkbox"/> Reduce Operating Costs <input checked="" type="checkbox"/> Replace Failing Infrastructure <input checked="" type="checkbox"/> Government Mandated <input type="checkbox"/> Reduce Staff Time <input checked="" type="checkbox"/> Health/Safety/Security <input type="checkbox"/> Increase Capacity <input type="checkbox"/> Other:		
Legend														
	Reconstruct / Rehabilitate Facility or Pavement													
	Construct New Facility or Pavement													
	Remove Facility or Pavement													
				AIP Administrative Checklist:										
				<input checked="" type="checkbox"/> Project AIP Eligible <input checked="" type="checkbox"/> ALP Updated <input type="checkbox"/> Airspace Determination <input type="checkbox"/> Environmental Complete <input type="checkbox"/> Design Complete										

Palm Springs International Airport Project One-Pager

Project Title:	Project Manager:	NPR:
Rehabilitate Taxilane G		78

Project Description:
 This project involves completing a slurry seal of Taxilane G. It is anticipated that 10% of the total area will require surface crack sealing before applying the slurry seal. Type I slurry will be used for the pavement. The project does not include modifications to airfield signage or utility infrastructure. Additional tasks include installing barricades and applying paint markings.


Project Justification:
 Taxilane G is the primary and sole access point for general aviation users to reach their hangars to Taxiway W, which connects to the airport's main runway. Regular pavement maintenance is crucial to prevent Taxilane G from deteriorating and breaking apart. Damaged pavement can generate foreign object debris (FOD), which may be ingested by aircraft engines, creating unsafe conditions. To prevent further pavement deterioration, maintenance is necessary to extend its useful life and ensure a safe operating environment.

Project Schedule:

Procurement Start Date	Design Start Date	Design End Date	Construction Start Date	Construction End Date	Project End Date
Aug-26	Nov-26	Apr-27	Jun-27	Dec-27	Mar-28

Estimated Costs:

Preliminary Planning	Design Services	Construction Services	Environmental	Contingency / Escalation	Construction / Equipment	Total Project Cost
\$ -	\$ 150,000	\$ -	\$ -	\$ -	\$ 850,000	\$ 1,000,000

Project Location:	Project Value/Benefit:						
<div style="border: 1px solid black; padding: 5px; margin-bottom: 10px;"> <p style="text-align: center; margin: 0;">Legend</p> <table style="width: 100%; border-collapse: collapse;"> <tr> <td style="width: 20px; background-color: #8b4513; border: 1px solid black;"></td> <td style="border: 1px solid black; padding: 2px;">Reconstruct / Rehabilitate Facility or Pavement</td> </tr> <tr> <td style="width: 20px; background-color: #00a0c9; border: 1px solid black;"></td> <td style="border: 1px solid black; padding: 2px;">Construct New Facility or Pavement</td> </tr> <tr> <td style="width: 20px; background-color: #800040; border: 1px solid black;"></td> <td style="border: 1px solid black; padding: 2px;">Remove Facility or Pavement</td> </tr> </table> </div> 		Reconstruct / Rehabilitate Facility or Pavement		Construct New Facility or Pavement		Remove Facility or Pavement	<ul style="list-style-type: none"> <input type="checkbox"/> Improve Passenger Experience <input checked="" type="checkbox"/> Reduce Operating Costs <input checked="" type="checkbox"/> Replace Failing Infrastructure <input checked="" type="checkbox"/> Government Mandated <input type="checkbox"/> Reduce Staff Time <input checked="" type="checkbox"/> Health/Safety/Security <input type="checkbox"/> Increase Capacity <input type="checkbox"/> Other: <div style="background-color: #0056b3; color: white; padding: 5px; margin-top: 10px;"> AIP Administrative Checklist: </div> <ul style="list-style-type: none"> <input checked="" type="checkbox"/> Project AIP Eligible <input checked="" type="checkbox"/> ALP Updated <input type="checkbox"/> Airspace Determination <input type="checkbox"/> Environmental Complete <input type="checkbox"/> Design Complete
	Reconstruct / Rehabilitate Facility or Pavement						
	Construct New Facility or Pavement						
	Remove Facility or Pavement						

Palm Springs International Airport Project One-Pager

Project Title:	Project Manager:	NPR:
Rehabilitate Twy E & C		78

Project Description:
 This project involves the design and rehabilitation of the entire lengths of Taxiways E and C. Taxiway E, which runs parallel to the airport's two parallel runways, is 75 feet wide with 25-foot paved shoulders on each side and extends approximately 10,000 feet. Taxiway C connects users on the east side of the airport to one of the two runways and measures 50 feet in width and approximately 5,000 feet in length. The rehabilitation will cover the taxiways as well as their entrance and exit connectors up to the hold-short line. Additionally, the run-up area on the northeast side of the airport, connected to Taxiway C, will also be rehabilitated.

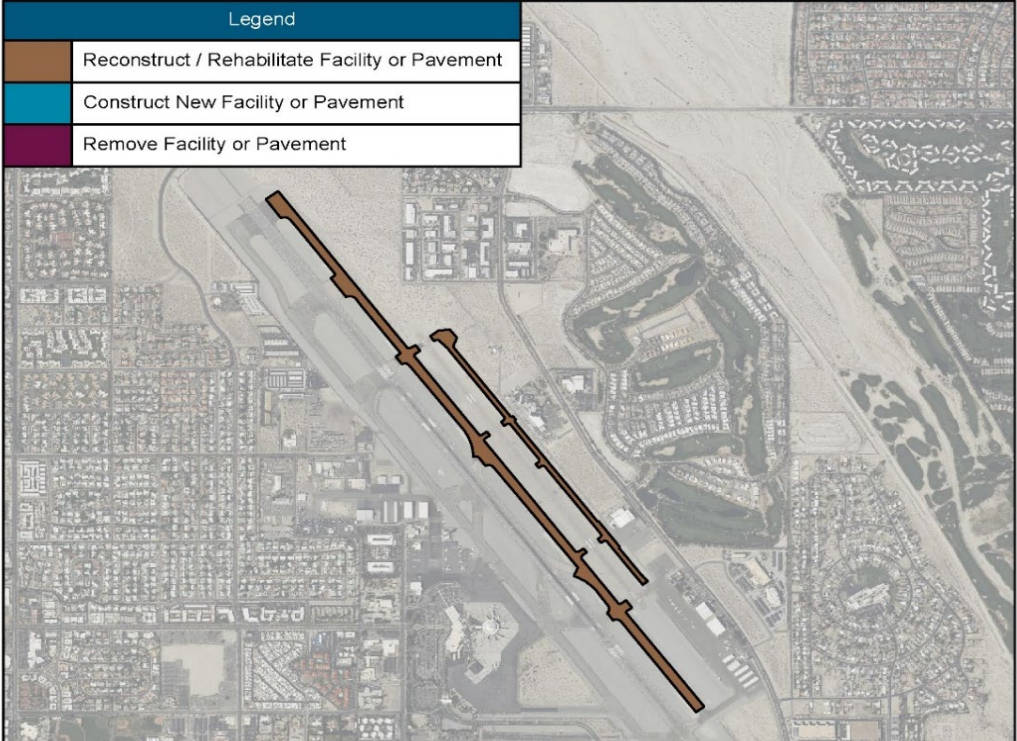
Project Justification:
 Taxiway E serves as the parallel taxiway to Runway 13L/31R, while Taxiway C functions as the parallel taxiway between the airport's two parallel runways. Both taxiways are constructed with asphalt pavement, which requires periodic maintenance to seal cracks and rejuvenate the surface. These taxiways are essential for efficient airfield operations and provide access for major tenants. Due to their frequent use, the pavement on both taxiways deteriorates over time. Rehabilitation is needed to preserve the pavement and ensure safe operations

Project Schedule:

Procurement Start Date	Design Start Date	Design End Date	Construction Start Date	Construction End Date	Project End Date
Aug-27	Nov-27	Apr-28	Jun-28	Dec-28	Mar-24

Estimated Costs:

Preliminary Planning	Design Services	Construction Services	Environmental	Contingency / Escalation	Construction / Equipment	Total Project Cost
\$ -	\$ 1,000,000	\$ -	\$ 50,000	\$ -	\$ 13,950,000	\$ 15,000,000

Project Location:	Project Value/Benefit:						
<div style="border: 1px solid black; padding: 5px; margin-bottom: 10px;"> <p style="text-align: center; margin: 0;">Legend</p> <table style="width: 100%; border-collapse: collapse;"> <tr> <td style="width: 20px; height: 15px; background-color: #8b4513; border: 1px solid black;"></td> <td style="font-size: 0.8em; padding: 2px;">Reconstruct / Rehabilitate Facility or Pavement</td> </tr> <tr> <td style="width: 20px; height: 15px; background-color: #0072bc; border: 1px solid black;"></td> <td style="font-size: 0.8em; padding: 2px;">Construct New Facility or Pavement</td> </tr> <tr> <td style="width: 20px; height: 15px; background-color: #800040; border: 1px solid black;"></td> <td style="font-size: 0.8em; padding: 2px;">Remove Facility or Pavement</td> </tr> </table> </div> 		Reconstruct / Rehabilitate Facility or Pavement		Construct New Facility or Pavement		Remove Facility or Pavement	<ul style="list-style-type: none"> <input type="checkbox"/> Improve Passenger Experience <input checked="" type="checkbox"/> Reduce Operating Costs <input checked="" type="checkbox"/> Replace Failing Infrastructure <input checked="" type="checkbox"/> Government Mandated <input type="checkbox"/> Reduce Staff Time <input checked="" type="checkbox"/> Health/Safety/Security <input type="checkbox"/> Increase Capacity <input type="checkbox"/> Other:
	Reconstruct / Rehabilitate Facility or Pavement						
	Construct New Facility or Pavement						
	Remove Facility or Pavement						
AIP Administrative Checklist:							
<ul style="list-style-type: none"> <input checked="" type="checkbox"/> Project AIP Eligible <input checked="" type="checkbox"/> ALP Updated <input type="checkbox"/> Airspace Determination <input type="checkbox"/> Environmental Complete <input type="checkbox"/> Design Complete 							

Palm Springs International Airport Project One-Pager

Project Title:	Project Manager:	NPR:
Terminal Wi-Fi Replacement and Install	Jeremy Keating	N/A

Project Description:
 This multi-phase project aims to identify gaps in Wi-Fi coverage and upgrade the existing infrastructure within and around the terminal. The first phase involves immediate IT component installation to stabilize and enhance the current network, including hardware upgrades and improved signal coverage. The next phase focuses on conducting a gap analysis to assess system performance, identify weaknesses, and plan future improvements, ensuring the Wi-Fi infrastructure can support anticipated technological advancements and increased demand.


Project Justification:
 Implementing this Wi-Fi upgrade and replacement project is crucial for ensuring reliable, high-performance connectivity within the terminal, which directly impacts the passenger experience and operational efficiency. The immediate IT upgrades address current deficiencies, providing a stable and secure network that supports the needs of both travelers and airport staff. Meanwhile, the comprehensive gap analysis will identify remaining vulnerabilities and guide future enhancements, ensuring that the Wi-Fi infrastructure remains robust and capable of meeting the demands of advancing technology and increasing user traffic. By proactively addressing these issues, the project not only improves current operations but also positions the airport to efficiently handle future growth and technological developments.

Project Schedule:

Procurement Start Date	Design Start Date	Design End Date	Construction Start Date	Construction End Date	Project End Date
In progress					Apr-26

Estimated Costs:

Preliminary Planning	Design Services	Construction Services	Environmental	Contingency / Escalation	Construction / Equipment	Total Project Cost
\$ 250,000	\$ 250,000	\$ -	\$ -	\$ -	\$ 500,000	\$ 1,000,000

Project Location:	Project Value/Benefit:						
<div style="border: 1px solid black; padding: 5px; margin-bottom: 10px;"> <p style="text-align: center; margin: 0;">Legend</p> <table style="width: 100%; border-collapse: collapse;"> <tr> <td style="width: 20px; height: 15px; background-color: #8b4513; border: 1px solid black;"></td> <td style="font-size: 0.8em; padding: 2px;">Reconstruct / Rehabilitate Facility or Pavement</td> </tr> <tr> <td style="width: 20px; height: 15px; background-color: #00a0c9; border: 1px solid black;"></td> <td style="font-size: 0.8em; padding: 2px;">Construct New Facility or Pavement</td> </tr> <tr> <td style="width: 20px; height: 15px; background-color: #800040; border: 1px solid black;"></td> <td style="font-size: 0.8em; padding: 2px;">Remove Facility or Pavement</td> </tr> </table> </div> 		Reconstruct / Rehabilitate Facility or Pavement		Construct New Facility or Pavement		Remove Facility or Pavement	<ul style="list-style-type: none"> <input checked="" type="checkbox"/> Improve Passenger Experience <input type="checkbox"/> Reduce Operating Costs <input checked="" type="checkbox"/> Replace Failing Infrastructure <input type="checkbox"/> Government Mandated <input type="checkbox"/> Reduce Staff Time <input type="checkbox"/> Health/Safety/Security <input type="checkbox"/> Increase Capacity <input type="checkbox"/> Other: <div style="background-color: #0056b3; color: white; padding: 5px; margin-top: 10px;"> <p style="margin: 0;">AIP Administrative Checklist:</p> <ul style="list-style-type: none"> <input type="checkbox"/> Project AIP Eligible <input type="checkbox"/> ALP Updated <input type="checkbox"/> Airspace Determination <input type="checkbox"/> Environmental Complete <input type="checkbox"/> Design Complete </div>
	Reconstruct / Rehabilitate Facility or Pavement						
	Construct New Facility or Pavement						
	Remove Facility or Pavement						

Palm Springs International Airport Project One-Pager

Project Title:	Project Manager:	NPR:
Main Terminal Wexler Façade Restoration	Jacob Collela	N/A

Project Description:
 This project will preserve and rejuvenate the mid-century design of the main terminal at Palm Springs International Airport. It includes restoration efforts to address weathering, structural integrity, and aesthetic wear that have developed over time. Key tasks involve repairing and reinforcing the façade’s structural elements, restoring original materials, and enhancing the façade’s durability to withstand future environmental challenges. Special care will be taken to maintain the authenticity of Wexler’s design, ensuring the restored façade remains true to its original form while meeting modern safety and durability standards.

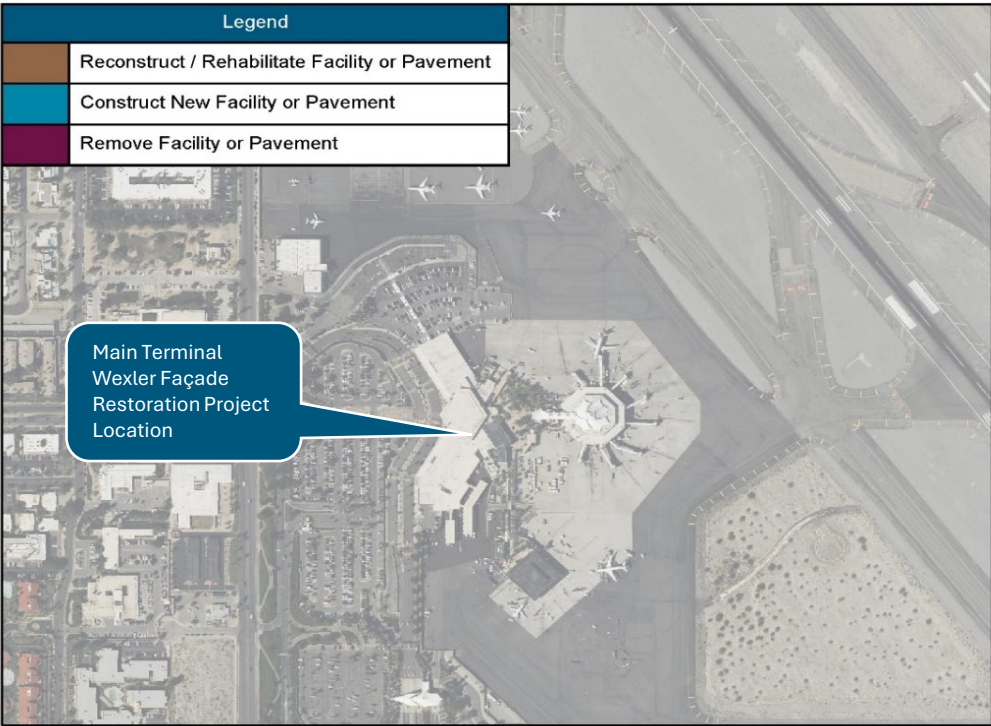
Project Justification:
 The main terminal facade, originally designed by the renowned architect Donald Wexler, is a significant architectural feature that embodies the unique aesthetic and historical value of the airport. This restoration project preserves a vital piece of the airport’s architectural heritage while also enhancing the overall passenger experience, reinforcing the distinct cultural identity of Palm Springs for all who visit.

Project Schedule:

Procurement Start Date	Design Start Date	Design End Date	Construction Start Date	Construction End Date	Project End Date
Sep-25	Nov-25	May-26	Aug-26	Mar-27	May-27

Estimated Costs:

Preliminary Planning	Design Services	Construction Services	Environmental	Contingency / Escalation	Construction / Equipment	Total Project Cost
\$ -	\$ 150,000	\$ -	\$ -	\$ -	\$ 1,350,000	\$ 1,500,000

Project Location:	Project Value/Benefit:						
<div style="border: 1px solid black; padding: 5px; margin-bottom: 10px;"> <p style="text-align: center; margin: 0;">Legend</p> <table style="width: 100%; border-collapse: collapse;"> <tr> <td style="width: 20px; height: 15px; background-color: #8b4513; border: 1px solid black;"></td> <td style="font-size: 0.8em; padding: 2px;">Reconstruct / Rehabilitate Facility or Pavement</td> </tr> <tr> <td style="width: 20px; height: 15px; background-color: #0070c0; border: 1px solid black;"></td> <td style="font-size: 0.8em; padding: 2px;">Construct New Facility or Pavement</td> </tr> <tr> <td style="width: 20px; height: 15px; background-color: #800040; border: 1px solid black;"></td> <td style="font-size: 0.8em; padding: 2px;">Remove Facility or Pavement</td> </tr> </table> </div> 		Reconstruct / Rehabilitate Facility or Pavement		Construct New Facility or Pavement		Remove Facility or Pavement	<ul style="list-style-type: none"> <input checked="" type="checkbox"/> Improve Passenger Experience <input type="checkbox"/> Reduce Operating Costs <input checked="" type="checkbox"/> Replace Failing Infrastructure <input type="checkbox"/> Government Mandated <input type="checkbox"/> Reduce Staff Time <input checked="" type="checkbox"/> Health/Safety/Security <input type="checkbox"/> Increase Capacity <input type="checkbox"/> Other: <div style="background-color: #0056b3; color: white; padding: 5px; margin-top: 10px;"> <p style="margin: 0;">AIP Administrative Checklist:</p> <ul style="list-style-type: none"> <input type="checkbox"/> Project AIP Eligible <input type="checkbox"/> ALP Updated <input type="checkbox"/> Airspace Determination <input type="checkbox"/> Environmental Complete <input type="checkbox"/> Design Complete </div>
	Reconstruct / Rehabilitate Facility or Pavement						
	Construct New Facility or Pavement						
	Remove Facility or Pavement						

Palm Springs International Airport Project One-Pager

Project Title:	Project Manager:	NPR:
GTC Design/Renovation	Jeremy Keating	N/A

Project Description:
 This project will design and renovate the GTC to relocate the airport security and badging offices into the space. The renovation will focus on updating interior finishes and fixtures to better support airport staff. It is anticipated that there will be no major modifications to the space, including significant utility changes or alterations to the building's exterior.

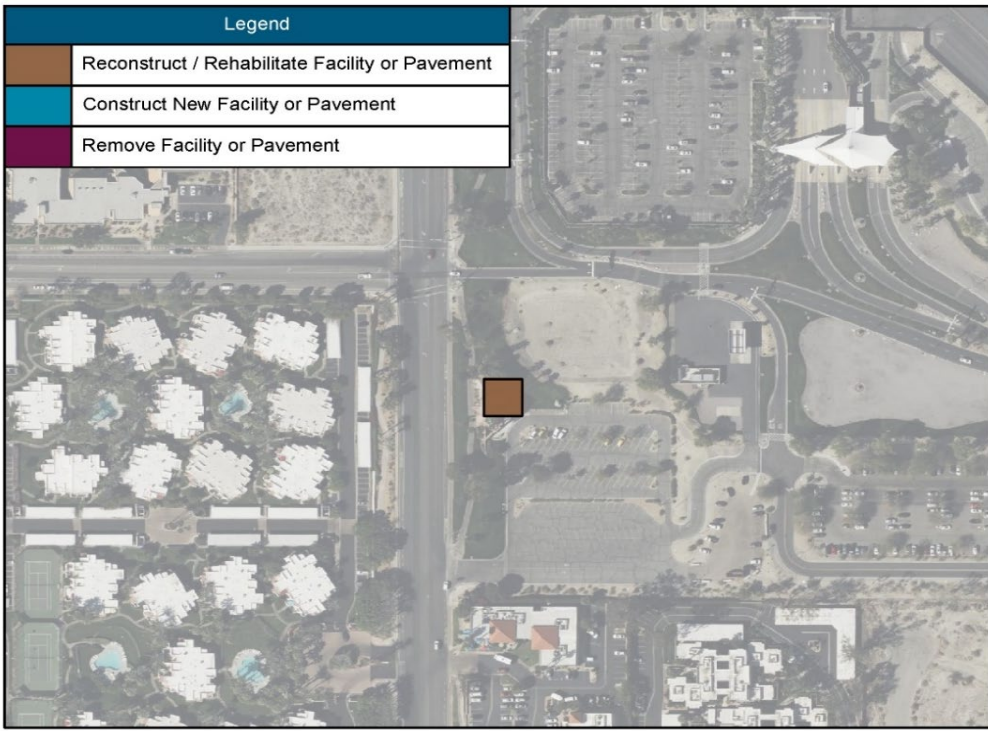
Project Justification:
 Implementing the design and renovation of the GTC to relocate airport security and badging offices is essential for improving operational efficiency and enhancing staff productivity. By consolidating these critical functions into a single, modernized space, the project will streamline security operations and the badging process, creating a more cohesive and effective work environment. The updates to interior finishes and fixtures will ensure that the facility meets the needs of airport personnel without requiring major structural changes or impacting the building's exterior. This strategic relocation will not only optimize workflow but also contribute to a more secure and well-organized airport operation, ultimately supporting the airport's commitment to safety and operational excellence.

Project Schedule:

Procurement Start Date	Design Start Date	Design End Date	Construction Start Date	Construction End Date	Project End Date
Jan-25	Mar-25	Jul-25	Oct-25	Dec-25	Mar-26

Estimated Costs:

Preliminary Planning	Design Services	Construction Services	Environmental	Contingency / Escalation	Construction / Equipment	Total Project Cost
\$ -	\$ 70,000	\$ -	\$ -	\$ -	\$ 630,000	\$ 700,000

Project Location:	Project Value/Benefit:						
<div style="border: 1px solid black; padding: 5px; margin-bottom: 10px;"> <p style="text-align: center; margin: 0;">Legend</p> <table style="width: 100%; border-collapse: collapse;"> <tr> <td style="width: 20px; height: 15px; background-color: #8b4513; border: 1px solid black;"></td> <td style="font-size: 0.8em; padding: 2px;">Reconstruct / Rehabilitate Facility or Pavement</td> </tr> <tr> <td style="width: 20px; height: 15px; background-color: #00a0c9; border: 1px solid black;"></td> <td style="font-size: 0.8em; padding: 2px;">Construct New Facility or Pavement</td> </tr> <tr> <td style="width: 20px; height: 15px; background-color: #800040; border: 1px solid black;"></td> <td style="font-size: 0.8em; padding: 2px;">Remove Facility or Pavement</td> </tr> </table> </div> 		Reconstruct / Rehabilitate Facility or Pavement		Construct New Facility or Pavement		Remove Facility or Pavement	<ul style="list-style-type: none"> <input type="checkbox"/> Improve Passenger Experience <input checked="" type="checkbox"/> Reduce Operating Costs <input type="checkbox"/> Replace Failing Infrastructure <input type="checkbox"/> Government Mandated <input checked="" type="checkbox"/> Reduce Staff Time <input type="checkbox"/> Health/Safety/Security <input checked="" type="checkbox"/> Increase Capacity <input type="checkbox"/> Other:
	Reconstruct / Rehabilitate Facility or Pavement						
	Construct New Facility or Pavement						
	Remove Facility or Pavement						
AIP Administrative Checklist:							
<ul style="list-style-type: none"> <input type="checkbox"/> Project AIP Eligible <input type="checkbox"/> ALP Updated <input type="checkbox"/> Airspace Determination <input type="checkbox"/> Environmental Complete <input type="checkbox"/> Design Complete 							

Palm Springs International Airport Project One-Pager

Project Title:	Project Manager:	NPR:
Airport Monument Signs Replacement		N/A

Project Description:

This project is divided into two key components. The first component involves creating a comprehensive signage standards plan. This plan will define text, style, and design standards to ensure consistency and clarity across all airport signs. The development process will include assessing current signage, reviewing best practices, and establishing guidelines that reflect the airport's branding and operational needs. Once text and style standards are defined, the project will proceed with replacing the existing monument signs. This will include installing new signs that adhere to the defined standards, ensuring improved visibility and coherence in the airport's signage system.

Project Justification:


Implementing the monument sign replacement project at Palm Springs International Airport is crucial for enhancing both the airport's visual identity and passenger experience. By developing a comprehensive signage standards plan, the project ensures that all new signs will have a consistent and professional appearance that aligns with the airport's branding. The replacement of outdated monument signs will improve visibility and clarity, making it easier for passengers and visitors to navigate the airport. This modernization effort will not only boost the airport's aesthetic appeal but also contribute to a more efficient and user-friendly environment, reinforcing the airport's commitment to excellence in passenger service and operational effectiveness.

Project Schedule:

Procurement Start Date	Design Start Date	Design End Date	Construction Start Date	Construction End Date	Project End Date
Sep-24	Dec-24	Apr-25	Jun-25	Sep-25	Dec-25

Estimated Costs:

Preliminary Planning	Design Services	Construction Services	Environmental	Contingency / Escalation	Construction / Equipment	Total Project Cost
\$ 75,000	\$ 150,000	\$ -	\$ -	\$ -	\$ 775,000	\$ 1,000,000

Project Location:	Project Value/Benefit:						
<div style="border: 1px solid black; padding: 5px; margin-bottom: 10px;"> <p style="text-align: center; margin: 0;">Legend</p> <table style="width: 100%; border-collapse: collapse;"> <tr> <td style="width: 20px; height: 15px; background-color: #8b4513; border: 1px solid black;"></td> <td style="font-size: 0.8em; padding: 2px;">Reconstruct / Rehabilitate Facility or Pavement</td> </tr> <tr> <td style="width: 20px; height: 15px; background-color: #00a0c9; border: 1px solid black;"></td> <td style="font-size: 0.8em; padding: 2px;">Construct New Facility or Pavement</td> </tr> <tr> <td style="width: 20px; height: 15px; background-color: #800040; border: 1px solid black;"></td> <td style="font-size: 0.8em; padding: 2px;">Remove Facility or Pavement</td> </tr> </table> </div> 		Reconstruct / Rehabilitate Facility or Pavement		Construct New Facility or Pavement		Remove Facility or Pavement	<ul style="list-style-type: none"> <input checked="" type="checkbox"/> Improve Passenger Experience <input type="checkbox"/> Reduce Operating Costs <input type="checkbox"/> Replace Failing Infrastructure <input type="checkbox"/> Government Mandated <input type="checkbox"/> Reduce Staff Time <input type="checkbox"/> Health/Safety/Security <input type="checkbox"/> Increase Capacity <input type="checkbox"/> Other: <div style="border: 1px solid black; padding: 5px; margin-top: 10px;"> <p style="text-align: center; margin: 0; background-color: #0056b3; color: white;">AIP Administrative Checklist:</p> <ul style="list-style-type: none"> <input type="checkbox"/> Project AIP Eligible <input type="checkbox"/> ALP Updated <input type="checkbox"/> Airspace Determination <input type="checkbox"/> Environmental Complete <input type="checkbox"/> Design Complete </div>
	Reconstruct / Rehabilitate Facility or Pavement						
	Construct New Facility or Pavement						
	Remove Facility or Pavement						

Palm Springs International Airport Project One-Pager

Project Title:	Project Manager:	NPR:
----------------	------------------	------

Main Terminal Loop Road & KDW Crack Seal and Sealcoat	Jacob Collela	41
---	---------------	----

Project Description:

This project involves applying a slurry seal to approximately 530,000 square feet of the Main Terminal Loop Road and Kirk Douglas Way. Before the slurry seal is applied, it is expected that 10% of the area will need surface crack sealing. Type I slurry will be used for this pavement treatment. The project does not encompass changes to roadway signage or utility infrastructure. Additional tasks include setting up barricades and applying paint markings.

Project Justification:

Implementing the slurry seal project for the Main Terminal Loop Road and Kirk Douglas Way is essential for maintaining the integrity and safety of these roadways as they serve as the primary access points to the airport. By applying a slurry seal, the project will enhance the pavement's durability, prevent further deterioration, and extend its lifespan. Addressing surface cracks before the slurry application will ensure a smooth, resilient driving surface, reducing the risk of damage and improving overall safety. This maintenance effort will not only preserve the functionality of the roadways but also contribute to a more efficient and reliable transportation experience at the airport.

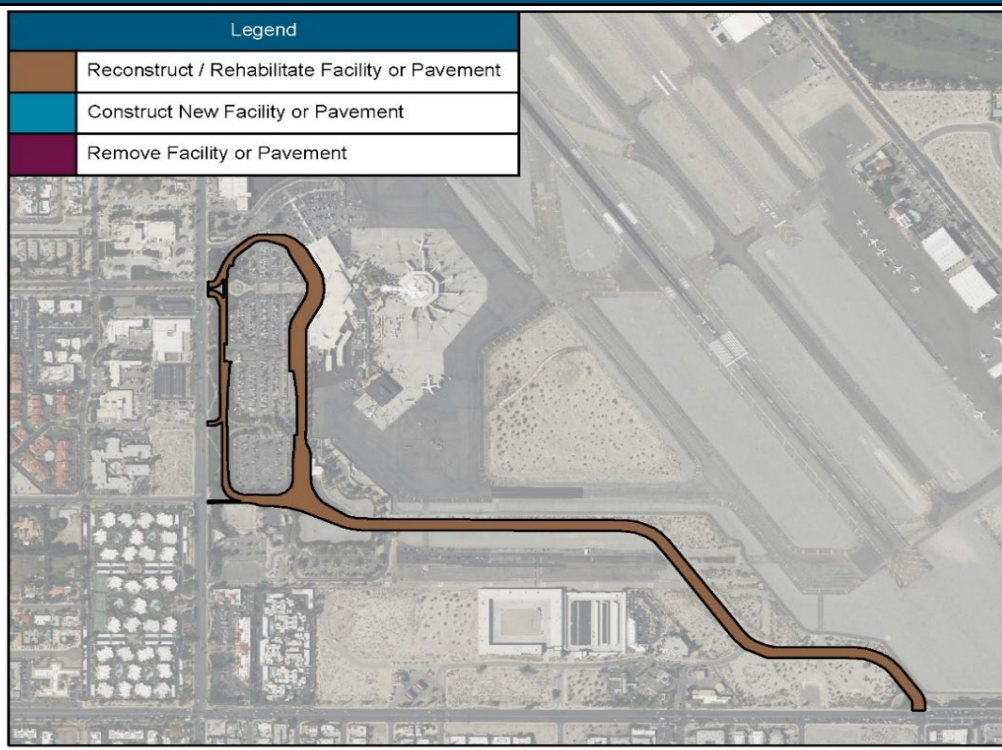
Project Schedule:

Procurement Start Date	Design Start Date	Design End Date	Construction Start Date	Construction End Date	Project End Date
Mar-26	N/A	N/A	May-26	Aug-26	Nov-26

Estimated Costs:

Preliminary Planning	Design Services	Construction Services	Environmental	Contingency / Escalation	Construction / Equipment	Total Project Cost
\$ -	\$ 100,000	\$ -	\$ -	\$ -	\$ 900,000	\$ 1,000,000

Project Location:	Project Value/Benefit:
-------------------	------------------------

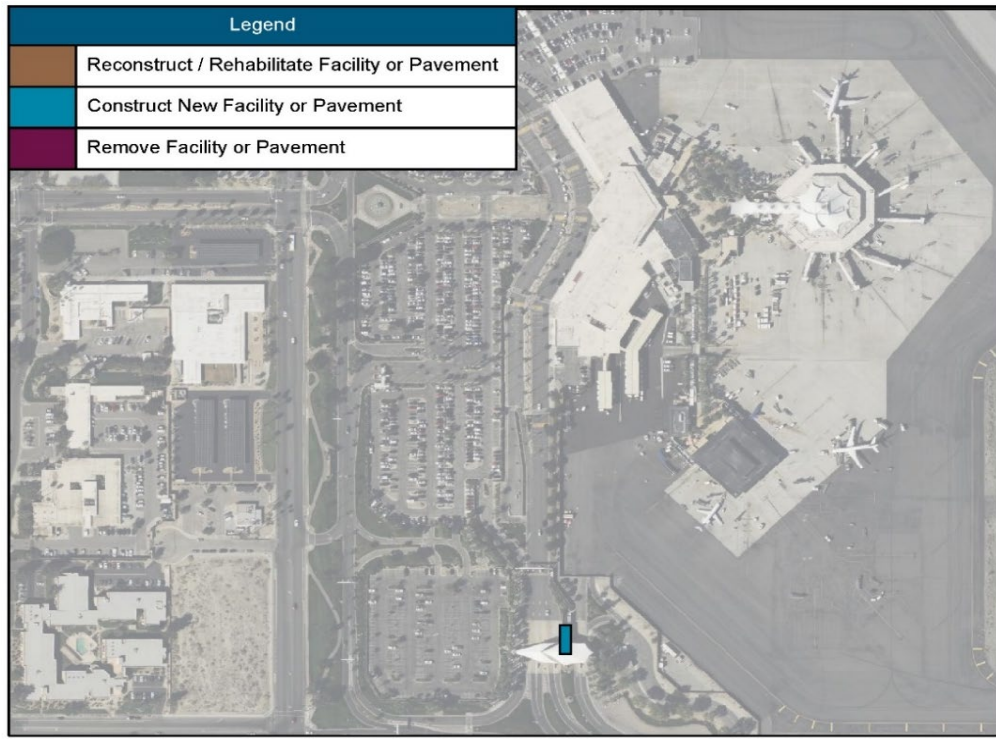


- Improve Passenger Experience
- Reduce Operating Costs
- Replace Failing Infrastructure
- Government Mandated
- Reduce Staff Time
- Health/Safety/Security
- Increase Capacity
- Other:

AIP Administrative Checklist:

- Project AIP Eligible
- ALP Updated
- Airspace Determination
- Environmental Complete
- Design Complete

Palm Springs International Airport Project One-Pager

Project Title:		Project Manager:	NPR:											
Redesign VIP to Expand ALT Control Center and Incorporate Landside Operations			N/A											
Project Description:														
<p>This project will redesign the Vehicle Inspection Plaza (VIP) to expand the ALT Control Center and integrate landside operations. It involves enlarging the existing ALT Control Center to create additional space for landside functions. The project will also upgrade the facility's infrastructure, including improving the layout, installing new equipment, and optimizing workflow to enhance service delivery and operational effectiveness.</p>														
Project Justification:														
<p>Implementing the redesign of the Vehicle Inspection Plaza (VIP) is essential for enhancing the efficiency and effectiveness of operations at Palm Springs International Airport. By expanding the ALT Control Center and integrating landside operations, the project will provide the necessary space and infrastructure to support growing demands and streamline operational processes. Upgrading the facility's layout, equipment, and workflow will improve service delivery, reduce bottlenecks, and enhance overall operational effectiveness.</p>														
Project Schedule:														
Procurement Start Date	Design Start Date	Design End Date	Construction Start Date	Construction End Date	Project End Date									
Dec-27	Feb-28	Jun-28	Aug-28	Nov-28	Feb-29									
Estimated Costs:														
Preliminary Planning	Design Services	Construction Services	Environmental	Contingency / Escalation	Construction / Equipment	Total Project Cost								
\$ -	\$ -	\$ -	\$ -	\$ -	\$ 200,000	\$ 200,000								
Project Location:				Project Value/Benefit:										
<table border="1" style="width: 100%; border-collapse: collapse;"> <thead> <tr style="background-color: #0056b3; color: white;"> <th colspan="2" style="text-align: left;">Legend</th> </tr> </thead> <tbody> <tr> <td style="width: 20px; background-color: #8b4513;"></td> <td>Reconstruct / Rehabilitate Facility or Pavement</td> </tr> <tr> <td style="width: 20px; background-color: #00a0c9;"></td> <td>Construct New Facility or Pavement</td> </tr> <tr> <td style="width: 20px; background-color: #800040;"></td> <td>Remove Facility or Pavement</td> </tr> </tbody> </table> 				Legend			Reconstruct / Rehabilitate Facility or Pavement		Construct New Facility or Pavement		Remove Facility or Pavement	<ul style="list-style-type: none"> <input type="checkbox"/> Improve Passenger Experience <input checked="" type="checkbox"/> Reduce Operating Costs <input type="checkbox"/> Replace Failing Infrastructure <input type="checkbox"/> Government Mandated <input checked="" type="checkbox"/> Reduce Staff Time <input checked="" type="checkbox"/> Health/Safety/Security <input checked="" type="checkbox"/> Increase Capacity <input type="checkbox"/> Other: 		
Legend														
	Reconstruct / Rehabilitate Facility or Pavement													
	Construct New Facility or Pavement													
	Remove Facility or Pavement													
AIP Administrative Checklist:														
<ul style="list-style-type: none"> <input type="checkbox"/> Project AIP Eligible <input type="checkbox"/> ALP Updated <input type="checkbox"/> Airspace Determination <input type="checkbox"/> Environmental Complete <input type="checkbox"/> Design Complete 														

Palm Springs International Airport Project One-Pager

Project Title:		Project Manager:		NPR:		
Perimeter Fence Rehabilitation/Security Enhancements (Phase 1 & 2)		Scott Daugherty		58		
Project Description:						
<p>This project will be completed in two phases and will enhance approximately XXXX linear feet of the airport-controlled security perimeter fence. The new security fence will exceed TSA 1542 specifications, featuring a design that includes ten feet of polyvinyl-coated chain link topped with one foot of three strands of barbed wire. Additionally, in certain areas, ecology blocks measuring four feet wide, three feet tall, and two feet deep will be installed to provide crash resistance.</p>						
Project Justification:						
<p>Implementing this project is critical for strengthening the security perimeter of Palm Springs International Airport. By enhancing approximately XXXX linear feet of the airport-controlled fence with a design that exceeds TSA 1542 specifications, the project will significantly improve the facility's security infrastructure. This comprehensive upgrade will not only bolster security but also ensure compliance with rigorous standards, thereby enhancing the overall safety and resilience of the airport's security measures.</p>						
Project Schedule:						
Procurement Start Date	Design Start Date	Design End Date	Construction Start Date	Construction End Date	Project End Date	
Mar-26	May-26	Oct-26	Dec-26	Nov-27	Jan-28	
Estimated Costs:						
Preliminary Planning	Design Services	Construction Services	Environmental	Contingency / Escalation	Construction / Equipment	Total Project Cost
\$ -	\$ 200,000	\$ -	\$ -	\$ -	\$ 1,800,000	\$ 2,000,000
Project Location:			Project Value/Benefit:			
<p><u>Not Applicable</u></p>			<input type="checkbox"/> Improve Passenger Experience <input type="checkbox"/> Reduce Operating Costs <input type="checkbox"/> Replace Failing Infrastructure <input type="checkbox"/> Government Mandated <input type="checkbox"/> Reduce Staff Time <input checked="" type="checkbox"/> Health/Safety/Security <input type="checkbox"/> Increase Capacity <input type="checkbox"/> Other:			
			AIP Administrative Checklist:			
			<input checked="" type="checkbox"/> Project AIP Eligible <input checked="" type="checkbox"/> ALP Updated <input type="checkbox"/> Airspace Determination <input type="checkbox"/> Environmental Complete <input type="checkbox"/> Design Complete			

Palm Springs International Airport Project One-Pager

Project Title:	Project Manager:	NPR:
----------------	------------------	------

Solid Waste Separator & Hazmat Storage - Design and Construct	Jacob Collela	N/A
---	---------------	-----

Project Description:

This project will design and construct a facility to manage and segregate solid waste and hazardous materials at Palm Springs International Airport. The project includes designing a state-of-the-art solid waste separator system to efficiently sort and process different types of waste. A dedicated storage area will be designed and constructed for hazardous materials. This facility will be equipped with proper safety features, including containment systems, ventilation, and access controls, to ensure safe handling and storage of hazardous substances.

Project Justification:

Implementing this project plays a crucial role for advancing Palm Springs International Airport's waste management and environmental sustainability efforts. The project will significantly enhance the airport's ability to efficiently segregate and process solid waste, reducing contamination and supporting recycling initiatives. The dedicated hazmat storage facility will ensure the safe handling and containment of hazardous materials, mitigating risks and ensuring compliance with environmental regulations. By upgrading these systems, the airport will improve operational efficiency, safeguard public health and safety, and demonstrate its commitment to sustainable practices and regulatory compliance.

Project Schedule:

Procurement Start Date	Design Start Date	Design End Date	Construction Start Date	Construction End Date	Project End Date
Jan-25	Mar-25	Jul-25	Oct-25	Dec-25	Mar-26

Estimated Costs:

Preliminary Planning	Design Services	Construction Services	Environmental	Contingency / Escalation	Construction / Equipment	Total Project Cost
\$ -	\$ 50,000	\$ -	\$ -	\$ -	\$ 450,000	\$ 500,000

Project Location:	Project Value/Benefit:
-------------------	------------------------



- Improve Passenger Experience
- Reduce Operating Costs
- Replace Failing Infrastructure
- Government Mandated
- Reduce Staff Time
- Health/Safety/Security
- Increase Capacity
- Other:

AIP Administrative Checklist:

- Project AIP Eligible
- ALP Updated
- Airspace Determination
- Environmental Complete
- Design Complete

Palm Springs International Airport Project One-Pager

Project Title:	Project Manager:	NPR:
Construct ARFF Station		75

Project Description:
 This project involves the design and construction of a new Aircraft Rescue and Firefighting (ARFF) Station to meet the requirements of Part 139. As outlined in the exhibit, the Master Plan identifies three potential locations for the ARFF Station, all situated on the west side of the airport property near the intersection of Aviation Road and El Cielo Road. The ARFF Station is planned to be approximately 23,500 square feet.

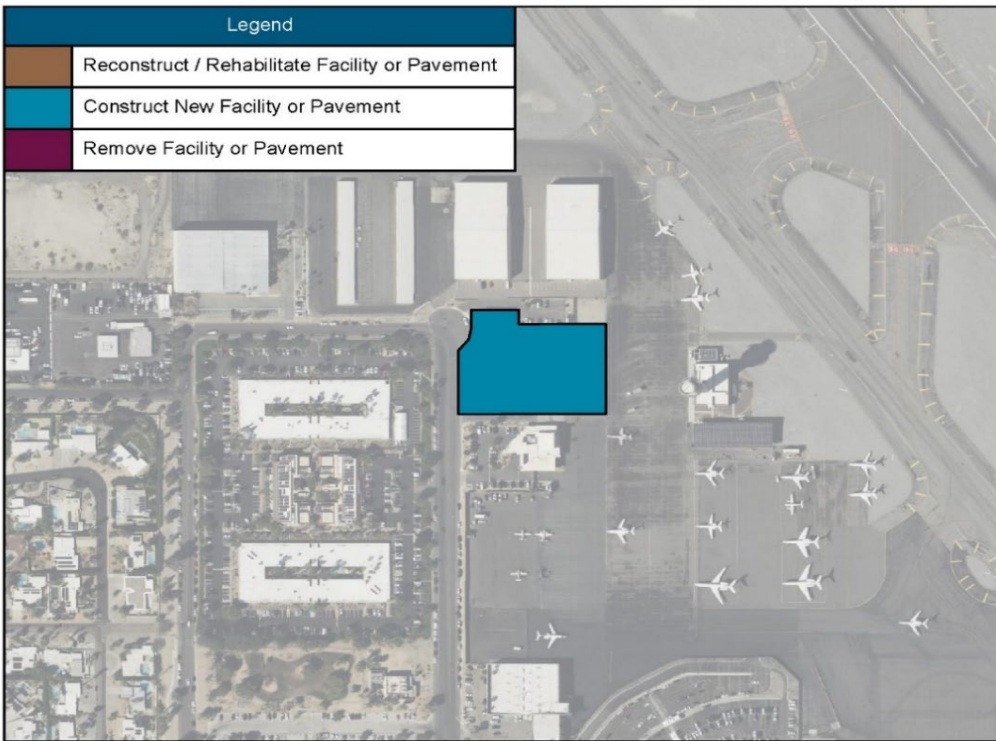
Project Justification:
 Implementing the design and construction of a new Aircraft Rescue and Firefighting (ARFF) Station is essential for meeting Part 139 requirements and enhancing the airport's emergency response capabilities. By establishing a state-of-the-art ARFF Station on the west side of the airport, the project will ensure that emergency services are well-positioned to respond rapidly and effectively to incidents, thereby improving safety for both aircraft and passengers.

Project Schedule:

Procurement Start Date	Design Start Date	Design End Date	Construction Start Date	Construction End Date	Project End Date
Jul-27	Sep-27	May-28	Aug-28	Aug-29	Oct-29

Estimated Costs:

Preliminary Planning	Design Services	Construction Services	Environmental	Contingency / Escalation	Construction / Equipment	Total Project Cost
\$ -	\$ 3,750,000	\$ -	\$ -	\$ -	\$ 33,750,000	\$ 37,500,000

Project Location:	Project Value/Benefit:						
<div style="border: 1px solid black; padding: 5px; margin-bottom: 10px;"> <p style="text-align: center; margin: 0;">Legend</p> <table style="width: 100%; border-collapse: collapse;"> <tr> <td style="width: 20px; height: 15px; background-color: #8b4513; border: 1px solid black;"></td> <td style="font-size: 0.8em; padding: 2px;">Reconstruct / Rehabilitate Facility or Pavement</td> </tr> <tr> <td style="width: 20px; height: 15px; background-color: #00a0c9; border: 1px solid black;"></td> <td style="font-size: 0.8em; padding: 2px;">Construct New Facility or Pavement</td> </tr> <tr> <td style="width: 20px; height: 15px; background-color: #800040; border: 1px solid black;"></td> <td style="font-size: 0.8em; padding: 2px;">Remove Facility or Pavement</td> </tr> </table> </div> 		Reconstruct / Rehabilitate Facility or Pavement		Construct New Facility or Pavement		Remove Facility or Pavement	<ul style="list-style-type: none"> <input type="checkbox"/> Improve Passenger Experience <input type="checkbox"/> Reduce Operating Costs <input type="checkbox"/> Replace Failing Infrastructure <input type="checkbox"/> Government Mandated <input type="checkbox"/> Reduce Staff Time <input checked="" type="checkbox"/> Health/Safety/Security <input type="checkbox"/> Increase Capacity <input type="checkbox"/> Other:
	Reconstruct / Rehabilitate Facility or Pavement						
	Construct New Facility or Pavement						
	Remove Facility or Pavement						
AIP Administrative Checklist:							
<ul style="list-style-type: none"> <input checked="" type="checkbox"/> Project AIP Eligible <input type="checkbox"/> ALP Updated <input type="checkbox"/> Airspace Determination <input type="checkbox"/> Environmental Complete <input type="checkbox"/> Design Complete 							

Palm Springs International Airport Project One-Pager

Project Title:		Project Manager:	NPR:			
Airport Drainage Master Plan and/or Project to Address Drainage		Nikki Gomez	65			
Project Description:						
<p>This project will develop a comprehensive airport drainage master plan to enhance the management and improvement of the airport's drainage systems. It will start with a detailed evaluation of the existing surface and subsurface drainage infrastructure to identify current limitations and areas needing improvement. Based on this assessment, the project will propose a series of recommended upgrades and improvements. Finally, a strategic plan will be created to prioritize and schedule these future drainage projects, ensuring efficient resource allocation and a logical sequence of implementation to minimize operational impacts.</p>						
Project Justification:						
<p>Implementing the Drainage Master Plan is crucial for optimizing water management and preventing flooding at Palm Springs International Airport. By thoroughly evaluating the current drainage infrastructure, the project will identify key limitations and areas needing improvement, allowing for targeted and effective upgrades. Developing a strategic plan to prioritize and schedule future drainage projects will ensure that resources are used efficiently and improvements are made in a logical, impactful sequence. This proactive approach will enhance the airport's ability to manage stormwater effectively, reduce the risk of operational disruptions, and maintain infrastructure resilience, ultimately supporting the airport's continued smooth and safe operation.</p>						
Project Schedule:						
Procurement Start Date	Planning Start Date	Planning End Date	Project End Date			
Jul-25	Nov-25	Jul-26	Oct-26			
Estimated Costs:						
Preliminary Planning	Design Services	Construction Services	Environmental	Contingency / Escalation	Construction / Equipment	Total Project Cost
\$ 5,000,000	\$ -	\$ -	\$ -	\$ -	\$ -	\$ 5,000,000
Project Location:				Project Value/Benefit:		
<u>Not Applicable</u>				<input type="checkbox"/> Improve Passenger Experience <input checked="" type="checkbox"/> Reduce Operating Costs <input checked="" type="checkbox"/> Replace Failing Infrastructure <input type="checkbox"/> Government Mandated <input type="checkbox"/> Reduce Staff Time <input type="checkbox"/> Health/Safety/Security <input checked="" type="checkbox"/> Increase Capacity <input type="checkbox"/> Other:		
AIP Administrative Checklist:						
<input checked="" type="checkbox"/> Project AIP Eligible <input type="checkbox"/> ALP Updated <input type="checkbox"/> Airspace Determination <input type="checkbox"/> Environmental Complete <input type="checkbox"/> Design Complete						