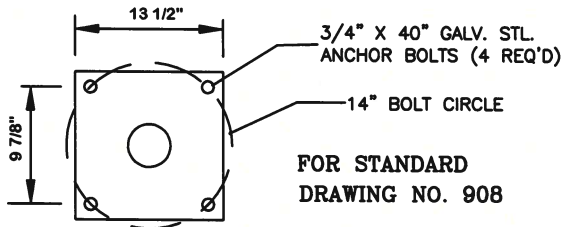
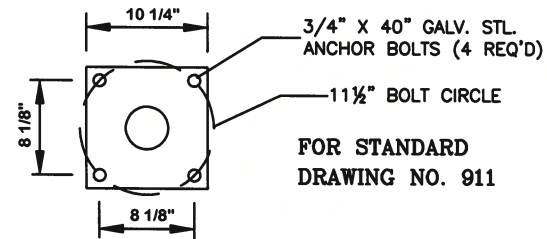
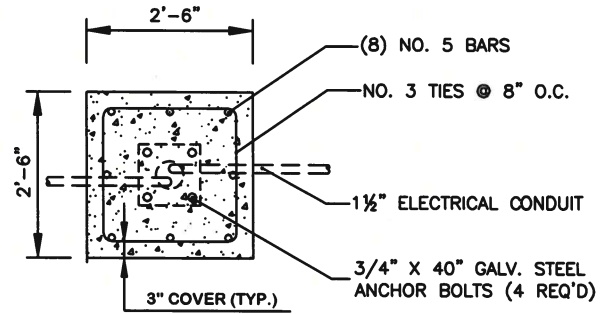


No.	REVISIONS	APPROVED	DATE



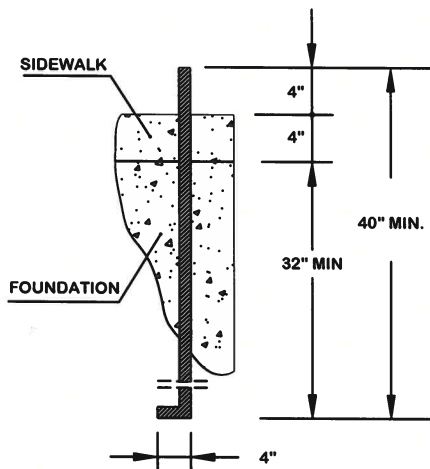
ANCHOR BOLT PLACEMENT

NTS



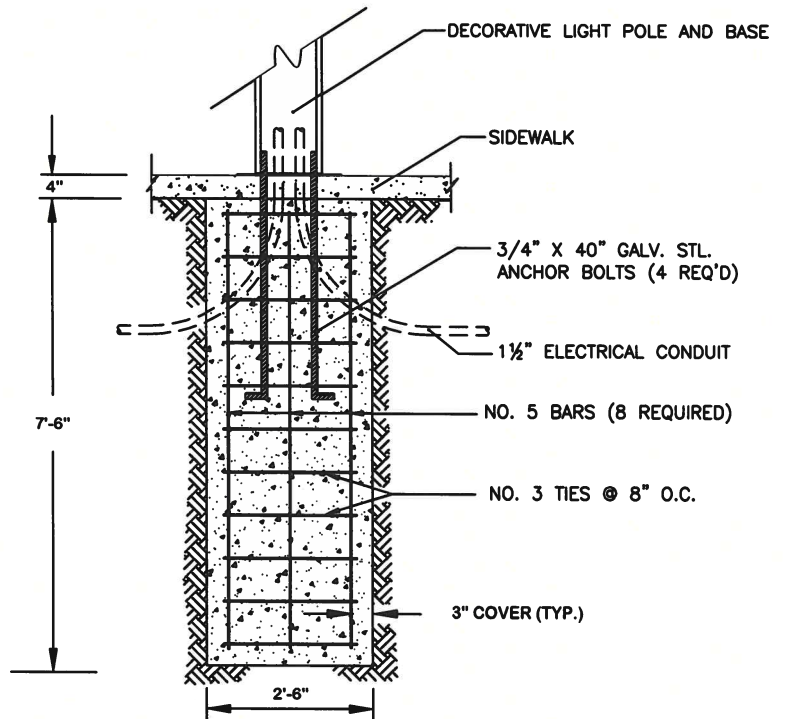
FOUNDATION PLAN

NTS



ANCHOR BOLT DETAIL

NOT TO SCALE



FOUNDATION DETAIL

NOT TO SCALE

NOTES:

1. ALL CONCRETE PLACED AGAINST EARTH SURFACE SHALL HAVE NOT LESS THAN 3" COVER OVER REINFORCING STEEL.
2. CONCRETE SHALL HAVE A MINIMUM COMPRESSIVE STRENGTH OF 2000 PSI AT 28 DAYS.
3. ALL ANCHOR BOLTS SHALL BE ASTM A 307 BENT ANCHOR BOLTS. FIELD BENDING NOT PERMITTED.
4. REINFORCED STEEL SHALL BE ASTM A 615 GRADE BARS, SIZED AS SHOWN BELOW. FIELD BENDING NOT PERMITTED.

**CITY OF PALM SPRINGS
ENGINEERING DIVISION**

APPROVED:

DATE: 5-23-22

Paul D. ...
CITY ENGINEER

62624
R.C.E.

**FOUNDATION TYPE "B"
FOR LUMINAIRE**

DRAWN BY: J.D.S.

FILE NO. STANDARDS

CHECKED BY: J.R.M.

DWG. NO. **909**