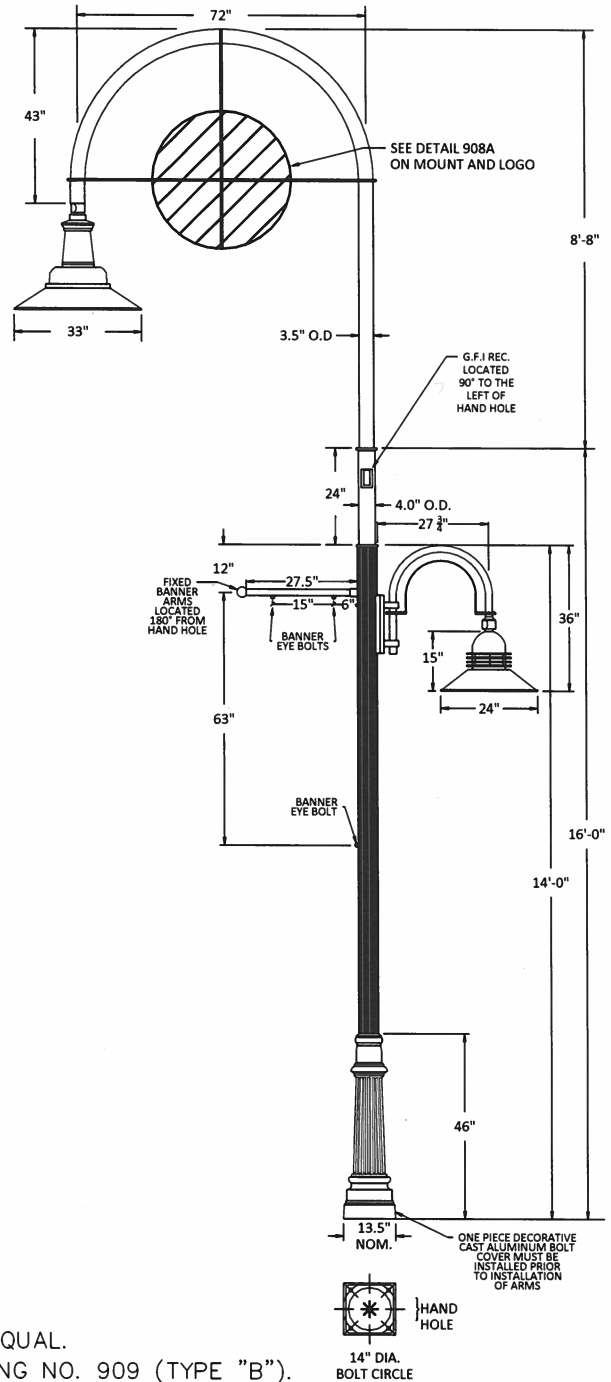


No.	REVISIONS	APPROVED	DATE

**SPECIFICATIONS:**

- LUMINAIRE: TOP LUMINAIRE** - HEAVY CAST ALUMINUM CONSTRUCTION WITH REMOVABLE BALLAST TRAY FOR EASY BALLAST ACCESS. LUMINAIRE PROVIDED WITH CLEAR TEMPERED FLAT GLASS LENS AND DECORATIVE SPUN ALUMINUM 33" DIA. REFLECTOR.
- OPTICS: TOP LUMINAIRE** - PRECISE, COMPUTER DESIGNED SPECULAR SEGMENTED REFLECTOR, HORIZONTAL TYPE HR-111 (ASYMMETRIC) LIGHT DISTRIBUTION.
- LUMINAIRE: BOTTOM LUMINAIRE - HOUSING** - DURABLE HEAVY WALL ALUMINUM CONSTRUCTION. REFLECTOR - HEAVY WALL ALUMINUM CONSTRUCTION. UPPER ILLUMINATED SECTION SUPPLIED WITH 4 DECORATIVE ALUMINUM RINGS.
- OPTICS: BOTTOM LUMINAIRE** - COMPUTER DESIGNED SEGMENTED REFLECTOR, COMBINES WITH CLEAR TEMPERED GLASS LENS TO PRODUCE A TYPE HR-III (ASYMMETRIC) LIGHT DISTRIBUTION AND SYMMETRIC LIGHT DISTRIBUTION FOR UPPER ILLUMINATED SECTION.
- LAMP HOLDER:** 660W-600V 4KV PULSE RATED, MEDIUM BASE, WHITE GLAZED PORCELAIN BODY, COPPER ALLOY NICKEL-PLATED SCREW SHELL, COPPER ALLOY NICKEL-PLATED CENTER CONTACT WITH LEAF SPRING UNDER CONTACT.
- LAMP:** TOP AND BOTTOM LUMINAIRE - 70 W. LED
- BALLAST:** H.P.F./C.W.A. AUTOTRANSFORMER, -20° STARTING TEMPERATURE. (MULTI-TAP VOLTAGE)
- ARM: TOP ARM** - (XPK-MOD. 3.50 O.D. X 72" CENTER TO CENTER) DURABLE CORROSION RESISTANT EXTRUDED ALUMINUM CONSTRUCTION. ARM PROVIDED WITH 4" O.D. (3.5" PIPE) X 24" LONG CENTER TO MOUNT OVER 3.5" O.D. (3" PIPE) X 12" LONG TENON ON SHAFT. GFI PROVIDED ON ARM CENTER.
- BOTTOM ARM** - (XPE-MOD.-ARM) DURABLE CORROSION RESISTANT CAST AND EXTRUDED ALUMINUM CONSTRUCTION.
- SHAFT:** (1070-SHAFT) 5" DIA. EXTRUDED FROM 6063 ALLOY ALUMINUM TUBING, HEAT TREATED TO PRODUCE A T6 TEMPER. WALL THICKNESS .188. SHAFT HAS EVENLY SPACED HIGHLY DETAILED RAISED VERTICAL FLUTES.
- BASE PLATE:** CAST ALUMINUM CONSTRUCTION OF 356 ALUMINUM ALLOY, ANCHOR BASE IS CIRCUMFERENTIALLY WELDED TO SHAFT.
- DECORATIVE TWO-PIECE WRAPAROUND, CORROSION RESISTANT, DURABLE CAST ALUMINUM CONSTRUCTION. MINIMUM .250 WALL THICKNESS. BASE CONSISTS OF A SMOOTH DECORATIVE BOTTOM SECTION AND A DECORATIVE TAPERED FLUTED TOP SECTION CONSISTING OF EVENLY SPACED, HIGHLY DETAILED RAISED VERTICAL FLUTES AND MATCHING FLUTED FLUSH HAND HOLE COVER. COVER SUPPLIED WITH TAMPER RESISTANT HARDWARE. (4) 1/4"-20 SET SCREWS PROVIDED TO SECURE DECORATIVE BASE TO SHAFT.**
- ANCHORAGE:** (4) 3/4" X 24" FULLY GALVANIZED ANCHOR BOLTS. EACH BOLT SUPPLIED WITH TWO NUTS AND TWO WASHERS.
- FINISH:** POLYESTER POWDER COAT-STATE OF THE ART 20PSI PRESSURE POWER WASH AT 140° TEMPERATURE INCORPORATES FOUR STEP IRON PHOSPHATE PROCESS TO CLEANSE AND PRETREAT THE METAL SURFACE FOR MAXIMUM PAINT ADHESION. ELECTROSTATICALLY APPLIED 3MM. THICK TEXTURED POLYESTER POWDER TOPCOAT IS BAKED AT 400° TEMPERATURE FOR MAXIMUM HARDNESS AND EXTERIOR DURABILITY. RAL 8019 GRAY BROWN POLYESTER GLOSS ANTI-GRAFFITTI CLEAR COAT FINISH APPLIED OVER POLYESTER POWDER, EITHER AS PROVIDED BY NORTEK POWDER COATING, LLC. WITH PRODUCT CODE 59SH173 OR BY EQUIVALENT APPROVED BY CITY ENGINEER.
- LOGO:** VARIES AS APPROVED BY THE CITY ENGINEER. LOGO ON MIDDLE OF DECORATIVE ARM NOT TO EXCEED 25 POUNDS.



**NOTES:**

1. MANUFACTURED BY SUN VALLEY LIGHTING OR EQUAL.
2. FOR FOUNDATION DETAIL SEE STANDARD DRAWING NO. 909 (TYPE "B").
3. LAMP WATTAGE AND TYPE SUBJECT TO APPROVAL OF THE CITY ENGINEER.
4. LAMP VOLTAGE SHALL BE AS REQUIRED TO CONNECT TO EXISTING ELECTRICAL SYSTEM OR AS SHOWN HEREON FOR NEW SYSTEMS.

CITY OF PALM SPRINGS  
ENGINEERING DIVISION

APPROVED:

*John D. S.*  
CITY ENGINEER

DATE: 5-23-22

62624  
R.C.E.

WALKWAY LUMINAIRE  
WITH UPPER ROADWAY LIGHTING

DRAWN BY: J.D.S.

FILE NO. STANDARDS

CHECKED BY: J.R.M.

DWG. NO. 908