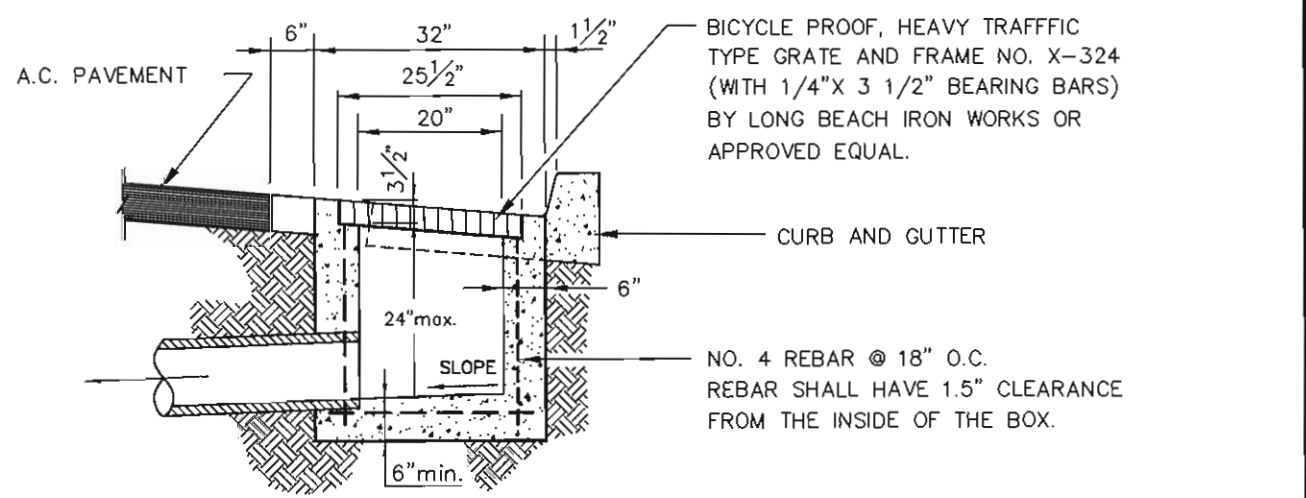
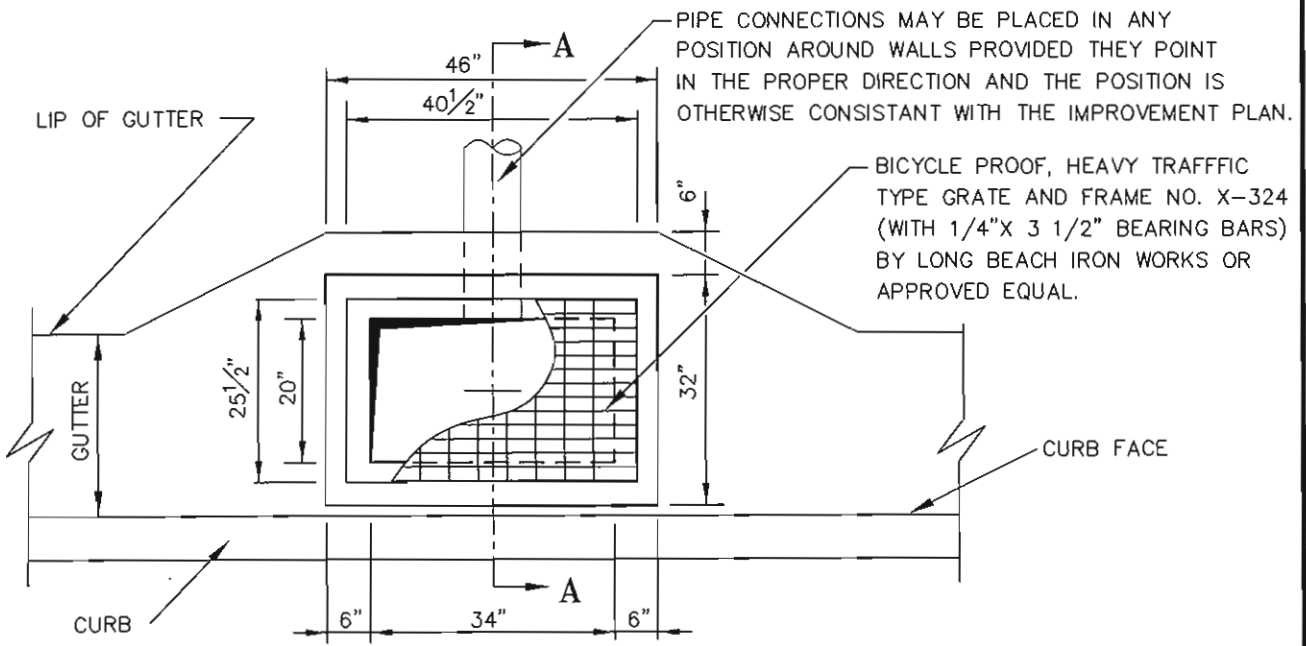


NO.	REVISIONS	APPROVED	DATE



**CROSS SECTION A-A**  
NOT TO SCALE

**NOTE:**  
CLASS 560-C-3250 PORTLAND CEMENT CONCRETE SHALL BE USED, IN ACCORDANCE WITH THE STAND. SPECIFICATIONS FOR PUBLIC WORKS CONSTRUCTION.

<p>CITY OF PALM SPRINGS PUBLIC WORKS &amp; ENGINEERING DEPARTMENT</p>	<p>APPROVED: <i>DBL</i></p>	<p>DATE: <i>12/16/07</i> <b>28931</b> R.C.E.</p>
	<p><b>NUISANCE WATER DRAIN</b></p>	<p>DRAWN BY: G.F.F. CHECKED BY: M.L.F.</p>