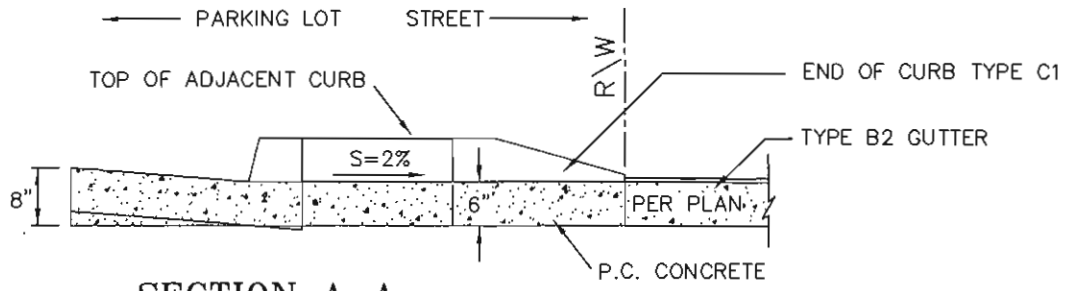
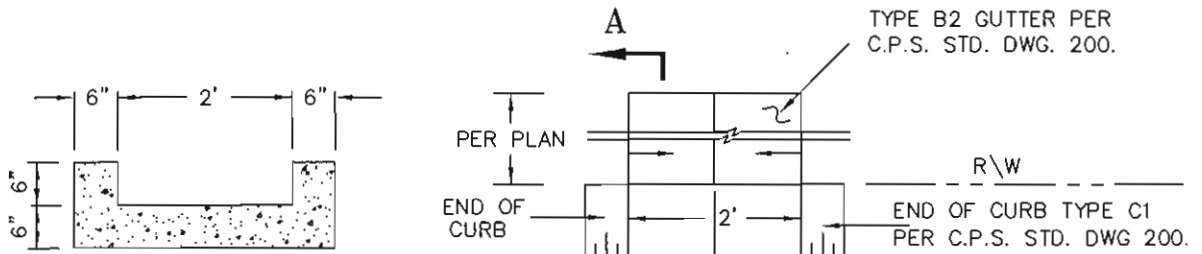


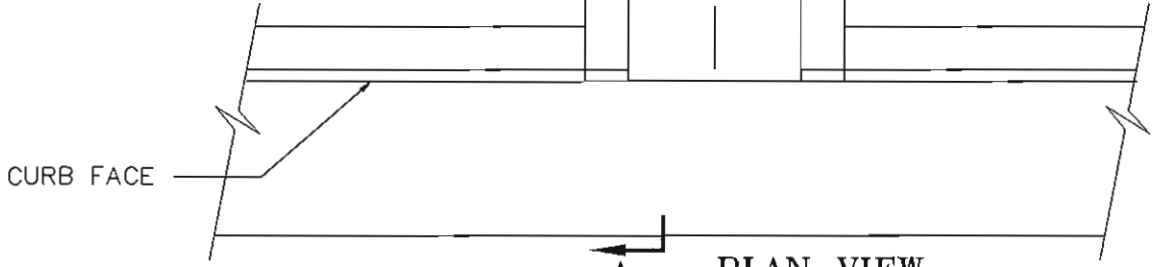
NO.	REVISIONS	APPROVED	DATE



SECTION A-A
NTS



SECTION B-B
NTS



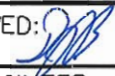
PLAN VIEW
NTS



PROFILE
NTS

NOTES:

1. THE FLOOR OF THE DRAINAGE CHANNEL SHALL BE TROWELLED SMOOTH.
2. CLASS 560-C-3250 PORTLAND CEMENT CONCRETE SHALL BE USED.
3. EXPANSION JOINTS AND 1" DEEP WEAKENED PLANE JOINTS SHALL BE EVERY 10' PER SECTION 303-5.4 OF STANDARD SPECIFICATIONS FOR PUBLIC WOKS CONSTRUCTION. SCORING 5 FEET MAXIMUM.
4. FOR PARKWAY DRAINS WHICH CROSS SIDEWALKS, A CURB INLET PER STANDARD DRAWING 705 SHALL BE USED.

CITY OF PALM SPRINGS PUBLIC WORKS & ENGINEERING DEPARTMENT	APPROVED: 	DATE: <u>2/18/01</u>
	CITY ENGINEER	28931 R.C.E.
PARKWAY DRAIN	DRAWN BY: G.F.F.	FILE NO. STANDARDS
	CHECKED BY: M.L.F.	DWG. NO. 706