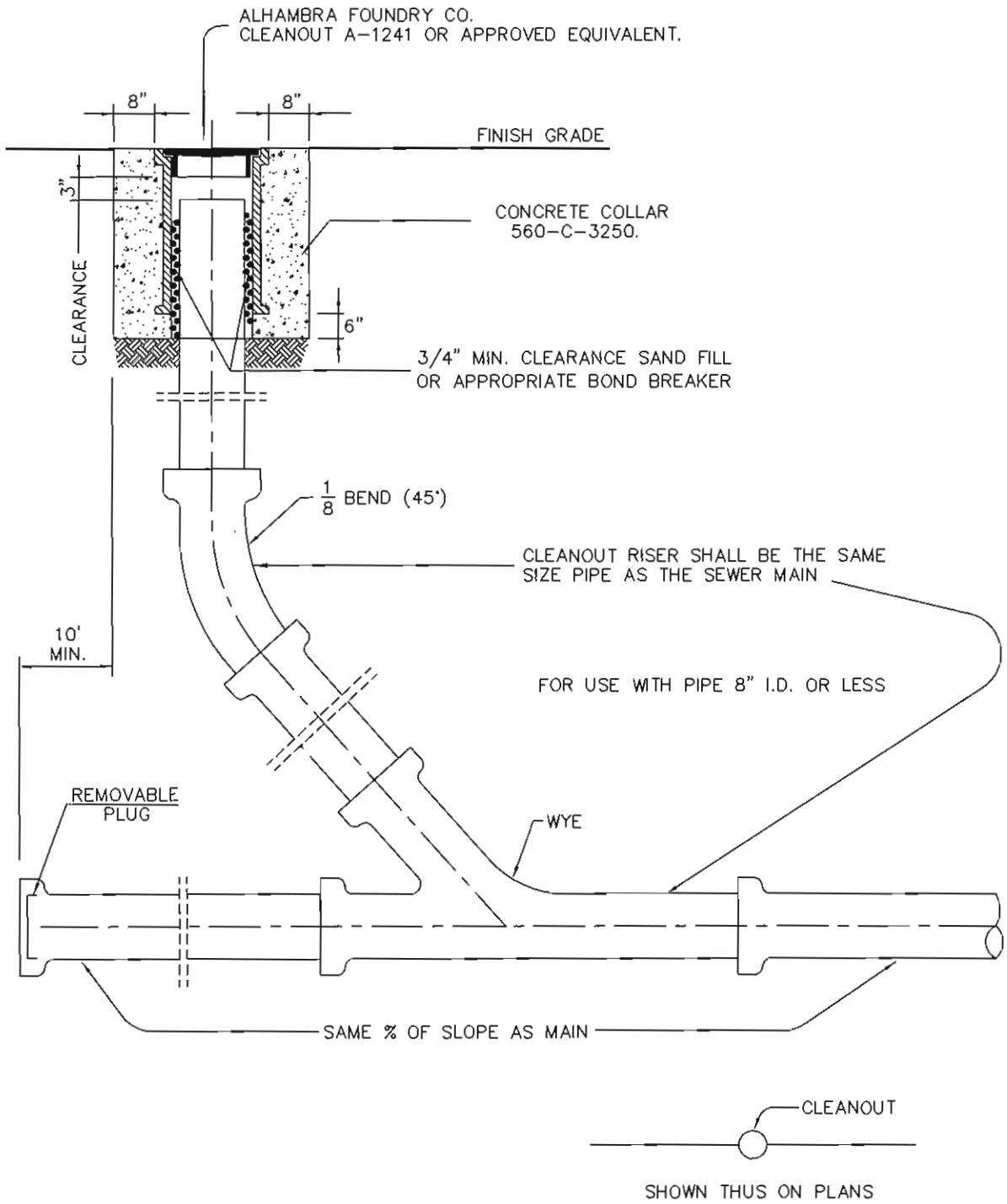



NO.	REVISIONS	APPROVED	DATE

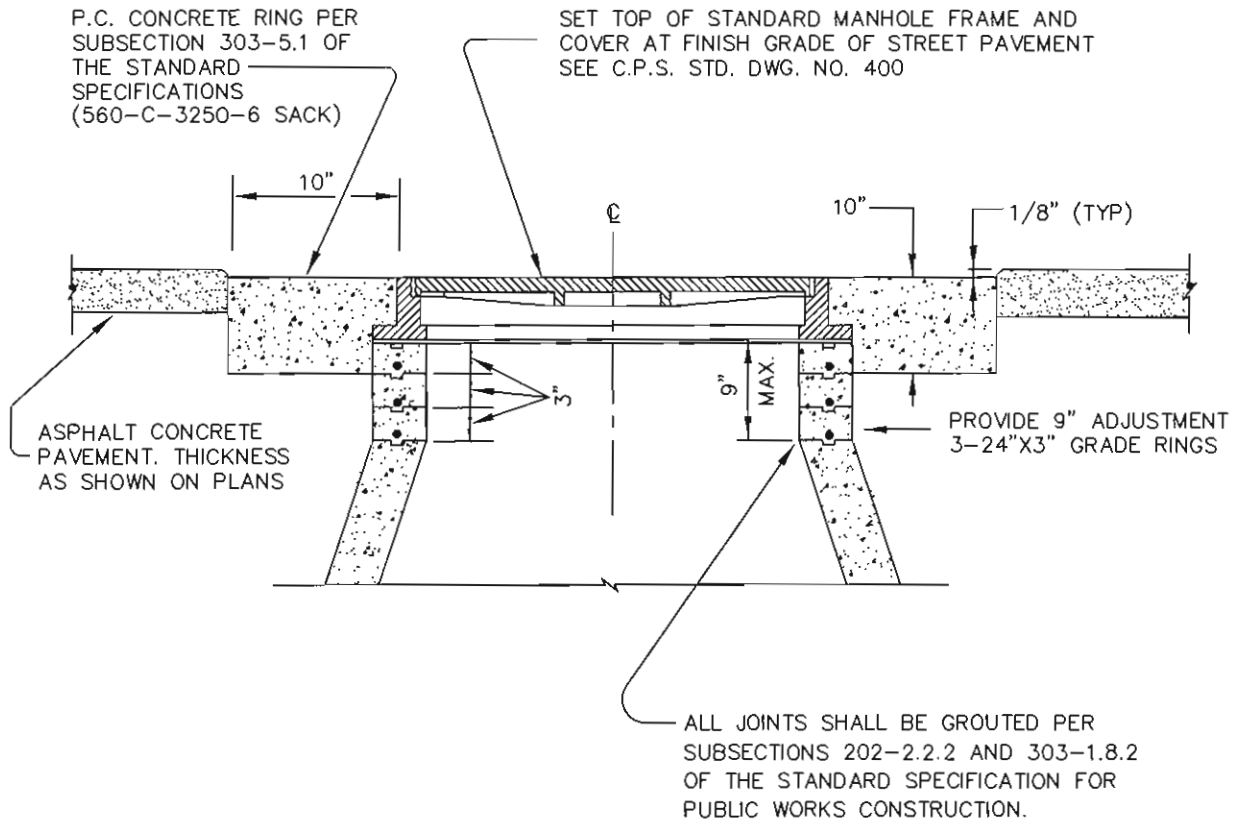


**CITY OF PALM SPRINGS**  
PUBLIC WORKS & ENGINEERING DEPARTMENT

**TERMINAL SEWER MAIN CLEANOUT**

APPROVED: 	DATE: <u>12/18/01</u> <b>28931</b>
CITY ENGINEER	R.C.E.
DRAWN BY: G.F.F.	FILE NO. STANDARDS
CHECKED BY: M.L.F.	DWG. NO. <b>401</b>

NO.	REVISIONS	APPROVED	DATE



**NOTES:**

1. WHEN ADJUSTING MANHOLES TO GRADE, CONTRACTOR SHALL UTILIZE THE APPLICABLE MANHOLE SHIMS AS MANUFACTURED BY SOUTH BAY FOUNDRY MODEL NO.S 1310/1", 1 1/4", 2", AND, 1312/1", 1 1/4", AND 2" OR EQUAL. SOUTH BAY FOUNDRY, 9444 ABRAHAM WAY, SANTEE, CA. 92071, TEL. (619) 956-2780
2. MAXIMUM OF 3 GRADE RINGS.

<p align="center"><b>CITY OF PALM SPRINGS</b> PUBLIC WORKS &amp; ENGINEERING DEPARTMENT</p>	<p>APPROVED: <i>[Signature]</i></p>	<p>DATE: <i>12/8/01</i> <b>28931</b></p>
	<p>CITY ENGINEER</p>	<p>R.C.E.</p>
<p align="center"><b>TOP OF MANHOLE DETAIL</b></p>	<p>DRAWN BY: G.F.F.</p>	<p>FILE NO. STANDARD</p>
	<p>CHECKED BY: M.L.F.</p>	<p>DWG. NO. <b>402</b></p>