

Preliminary Landscape Plan Indian Canyon Palm Springs, CA

Architecture+Planning
3733 Ocean Ave., Suite 250
Santa Monica, CA 90403
310.394.2623
kfp@capa.com



PL-1

| PLANT | SCIENTIFIC NAME | COMMON NAME | HT. | DBH |
|-------|----------------------|-------------|-----|-----|
| 1 | JACQUA ARBorea | JACQUA | 25' | 3" |
| 2 | JACQUA BRACHYOPHYLLA | JACQUA | 25' | 3" |
| 3 | JACQUA GAMBELII | JACQUA | 25' | 3" |
| 4 | JACQUA PARVIFLORA | JACQUA | 25' | 3" |
| 5 | JACQUA TRINERIS | JACQUA | 25' | 3" |
| 6 | JACQUA GAMBELII | JACQUA | 25' | 3" |
| 7 | JACQUA GAMBELII | JACQUA | 25' | 3" |
| 8 | JACQUA GAMBELII | JACQUA | 25' | 3" |
| 9 | JACQUA GAMBELII | JACQUA | 25' | 3" |
| 10 | JACQUA GAMBELII | JACQUA | 25' | 3" |
| 11 | JACQUA GAMBELII | JACQUA | 25' | 3" |
| 12 | JACQUA GAMBELII | JACQUA | 25' | 3" |
| 13 | JACQUA GAMBELII | JACQUA | 25' | 3" |
| 14 | JACQUA GAMBELII | JACQUA | 25' | 3" |
| 15 | JACQUA GAMBELII | JACQUA | 25' | 3" |
| 16 | JACQUA GAMBELII | JACQUA | 25' | 3" |
| 17 | JACQUA GAMBELII | JACQUA | 25' | 3" |
| 18 | JACQUA GAMBELII | JACQUA | 25' | 3" |
| 19 | JACQUA GAMBELII | JACQUA | 25' | 3" |
| 20 | JACQUA GAMBELII | JACQUA | 25' | 3" |
| 21 | JACQUA GAMBELII | JACQUA | 25' | 3" |
| 22 | JACQUA GAMBELII | JACQUA | 25' | 3" |
| 23 | JACQUA GAMBELII | JACQUA | 25' | 3" |
| 24 | JACQUA GAMBELII | JACQUA | 25' | 3" |
| 25 | JACQUA GAMBELII | JACQUA | 25' | 3" |
| 26 | JACQUA GAMBELII | JACQUA | 25' | 3" |
| 27 | JACQUA GAMBELII | JACQUA | 25' | 3" |
| 28 | JACQUA GAMBELII | JACQUA | 25' | 3" |
| 29 | JACQUA GAMBELII | JACQUA | 25' | 3" |
| 30 | JACQUA GAMBELII | JACQUA | 25' | 3" |
| 31 | JACQUA GAMBELII | JACQUA | 25' | 3" |
| 32 | JACQUA GAMBELII | JACQUA | 25' | 3" |
| 33 | JACQUA GAMBELII | JACQUA | 25' | 3" |
| 34 | JACQUA GAMBELII | JACQUA | 25' | 3" |
| 35 | JACQUA GAMBELII | JACQUA | 25' | 3" |
| 36 | JACQUA GAMBELII | JACQUA | 25' | 3" |
| 37 | JACQUA GAMBELII | JACQUA | 25' | 3" |
| 38 | JACQUA GAMBELII | JACQUA | 25' | 3" |
| 39 | JACQUA GAMBELII | JACQUA | 25' | 3" |
| 40 | JACQUA GAMBELII | JACQUA | 25' | 3" |
| 41 | JACQUA GAMBELII | JACQUA | 25' | 3" |
| 42 | JACQUA GAMBELII | JACQUA | 25' | 3" |
| 43 | JACQUA GAMBELII | JACQUA | 25' | 3" |
| 44 | JACQUA GAMBELII | JACQUA | 25' | 3" |
| 45 | JACQUA GAMBELII | JACQUA | 25' | 3" |
| 46 | JACQUA GAMBELII | JACQUA | 25' | 3" |
| 47 | JACQUA GAMBELII | JACQUA | 25' | 3" |
| 48 | JACQUA GAMBELII | JACQUA | 25' | 3" |
| 49 | JACQUA GAMBELII | JACQUA | 25' | 3" |
| 50 | JACQUA GAMBELII | JACQUA | 25' | 3" |
| 51 | JACQUA GAMBELII | JACQUA | 25' | 3" |
| 52 | JACQUA GAMBELII | JACQUA | 25' | 3" |
| 53 | JACQUA GAMBELII | JACQUA | 25' | 3" |
| 54 | JACQUA GAMBELII | JACQUA | 25' | 3" |
| 55 | JACQUA GAMBELII | JACQUA | 25' | 3" |
| 56 | JACQUA GAMBELII | JACQUA | 25' | 3" |
| 57 | JACQUA GAMBELII | JACQUA | 25' | 3" |
| 58 | JACQUA GAMBELII | JACQUA | 25' | 3" |
| 59 | JACQUA GAMBELII | JACQUA | 25' | 3" |
| 60 | JACQUA GAMBELII | JACQUA | 25' | 3" |
| 61 | JACQUA GAMBELII | JACQUA | 25' | 3" |
| 62 | JACQUA GAMBELII | JACQUA | 25' | 3" |
| 63 | JACQUA GAMBELII | JACQUA | 25' | 3" |
| 64 | JACQUA GAMBELII | JACQUA | 25' | 3" |
| 65 | JACQUA GAMBELII | JACQUA | 25' | 3" |
| 66 | JACQUA GAMBELII | JACQUA | 25' | 3" |
| 67 | JACQUA GAMBELII | JACQUA | 25' | 3" |
| 68 | JACQUA GAMBELII | JACQUA | 25' | 3" |
| 69 | JACQUA GAMBELII | JACQUA | 25' | 3" |
| 70 | JACQUA GAMBELII | JACQUA | 25' | 3" |
| 71 | JACQUA GAMBELII | JACQUA | 25' | 3" |
| 72 | JACQUA GAMBELII | JACQUA | 25' | 3" |
| 73 | JACQUA GAMBELII | JACQUA | 25' | 3" |
| 74 | JACQUA GAMBELII | JACQUA | 25' | 3" |
| 75 | JACQUA GAMBELII | JACQUA | 25' | 3" |
| 76 | JACQUA GAMBELII | JACQUA | 25' | 3" |
| 77 | JACQUA GAMBELII | JACQUA | 25' | 3" |
| 78 | JACQUA GAMBELII | JACQUA | 25' | 3" |
| 79 | JACQUA GAMBELII | JACQUA | 25' | 3" |
| 80 | JACQUA GAMBELII | JACQUA | 25' | 3" |
| 81 | JACQUA GAMBELII | JACQUA | 25' | 3" |
| 82 | JACQUA GAMBELII | JACQUA | 25' | 3" |
| 83 | JACQUA GAMBELII | JACQUA | 25' | 3" |
| 84 | JACQUA GAMBELII | JACQUA | 25' | 3" |
| 85 | JACQUA GAMBELII | JACQUA | 25' | 3" |
| 86 | JACQUA GAMBELII | JACQUA | 25' | 3" |
| 87 | JACQUA GAMBELII | JACQUA | 25' | 3" |
| 88 | JACQUA GAMBELII | JACQUA | 25' | 3" |
| 89 | JACQUA GAMBELII | JACQUA | 25' | 3" |
| 90 | JACQUA GAMBELII | JACQUA | 25' | 3" |
| 91 | JACQUA GAMBELII | JACQUA | 25' | 3" |
| 92 | JACQUA GAMBELII | JACQUA | 25' | 3" |
| 93 | JACQUA GAMBELII | JACQUA | 25' | 3" |
| 94 | JACQUA GAMBELII | JACQUA | 25' | 3" |
| 95 | JACQUA GAMBELII | JACQUA | 25' | 3" |
| 96 | JACQUA GAMBELII | JACQUA | 25' | 3" |
| 97 | JACQUA GAMBELII | JACQUA | 25' | 3" |
| 98 | JACQUA GAMBELII | JACQUA | 25' | 3" |
| 99 | JACQUA GAMBELII | JACQUA | 25' | 3" |
| 100 | JACQUA GAMBELII | JACQUA | 25' | 3" |

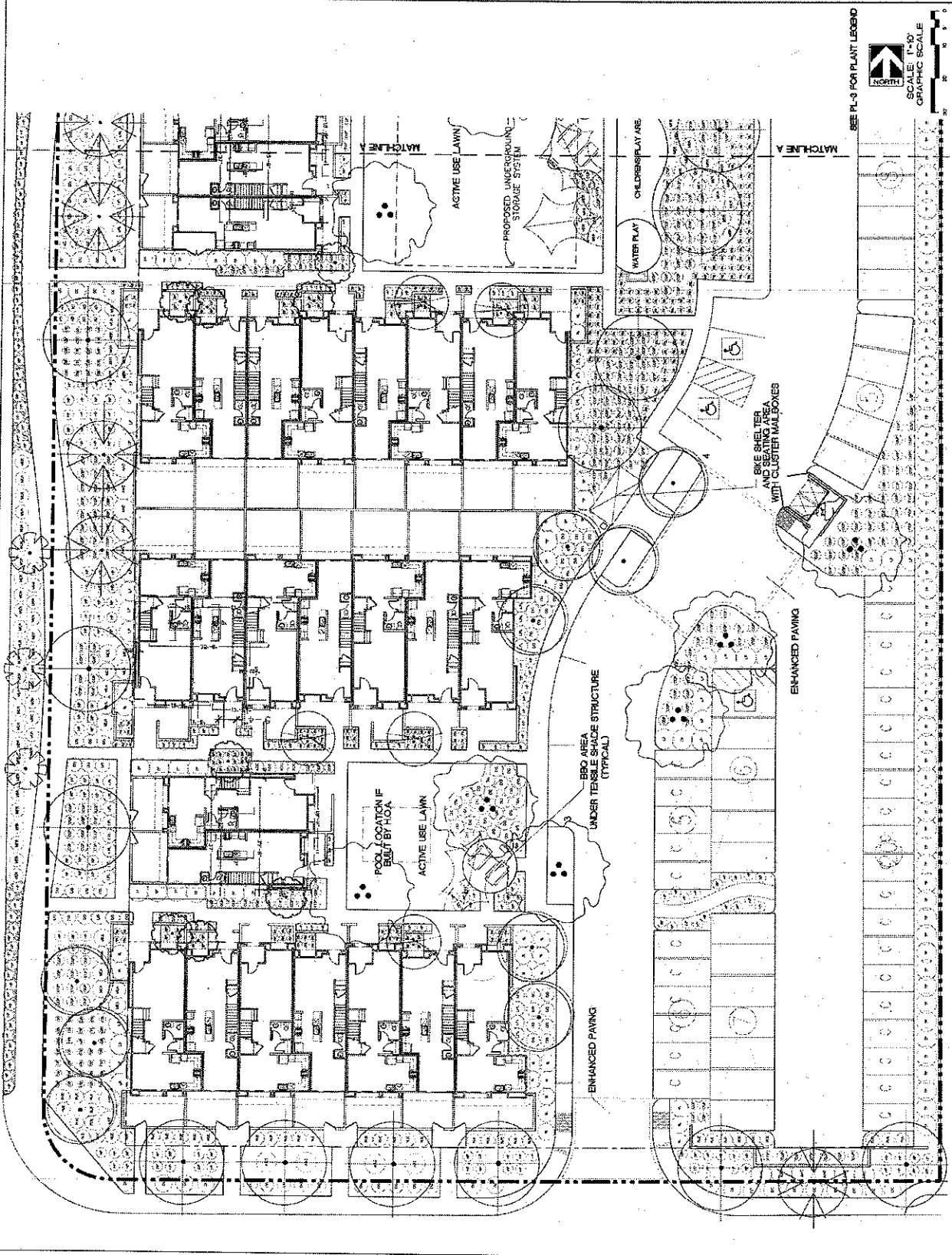


LANDSCAPE ARCHITECTS, INC.
 1700 ALBERTA DRIVE
 PALM SPRINGS, CA 92262
 (951) 326-3644
 E-MAIL: INFO@RCA.COM

PRELIMINARY LANDSCAPE PLAN
 INDIAN CANYON
 PALM SPRINGS, CA

| | |
|----------------------------|------------------|
| SHEET TITLE | PROJECT |
| PRELIMINARY LANDSCAPE PLAN | INDIAN CANYON |
| INDIAN CANYON | PALM SPRINGS, CA |
| DATE | DATE |
| SCALE | SCALE |
| REVISIONS | REVISIONS |
| CHECKED | DATE |
| DRAWN | DATE |
| JOB CAPTAIN | DATE |
| DESIGNED | DATE |
| PROJECT NO. | PROJECT NO. |
| DATE | DATE |
| SCALE | SCALE |
| REVISIONS | REVISIONS |

PL-2



SEE PL-3 FOR PLANT LEGEND



SCALE: 1" = 10'
 GRAPHIC SCALE



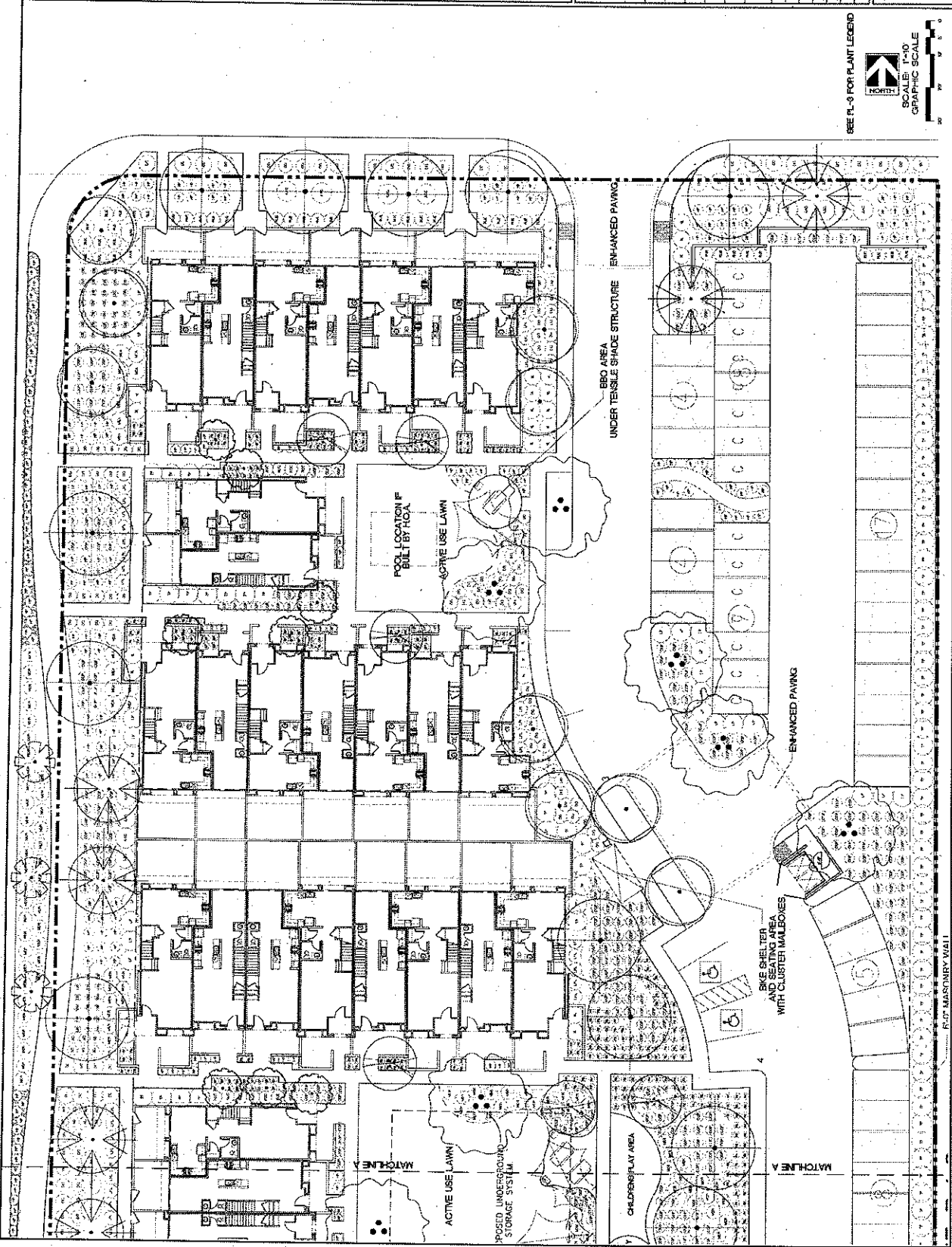
LANDSCAPE ARCHITECTURE INC.
 1000 S. PALM AVENUE, SUITE 100
 PALM SPRINGS, CA 92262
 PHONE: (951) 772-2885
 FAX: (951) 772-2886
 E-MAIL: info@rca.com

PROJECT: INDIAN CANYON
 PALM SPRINGS, CA

SHEET TITLE: PRELIMINARY LANDSCAPE PLAN

SPECIFICATIONS: _____
 SHEET D: _____
 JOB CAPTAIN: _____
 DRAWN: _____
 CHECKED: _____
 PROJ. NO.: _____
 DATE: _____
 SCALE: _____
 REVISIONS: _____

SHEET NO. PL-3



R-37 MASONRY WALL



PRELIMINARY LANDSCAPE PLAN

INDIAN CANYON
PALM SPRINGS, CA

SHEET TITLE
PROJECT

| | |
|-------------|----------|
| SHEET NO | BOOK NO |
| JOB CAPTIAN | DATE |
| DRAWN | BY |
| CHECKED | BY |
| PROJ. NO. | R. 0251 |
| DATE | 08/20/00 |
| SCALE | |
| REVISIONS | |
| | |
| | |
| | |
| | |
| | |
| | |
| | |
| | |

SHEET NO

PL-4

PLANT LEGEND

| SYMBOL | CODE | BOTANICAL NAME | COMMON NAME | CITY | SIZE |
|--------|--------|--|------------------------------------|------|-------|
| | ACA | ACACIA ANEURA | MULGA TREE | 9 | 36" |
| | AST | ACACIA STENOPHYLLA | SHOESTRING ACACIA | 18 | 36" |
| | ACW | ACACIA WILLARDIANA | PALO BLANCO | 16 | 36" |
| | CDM | CERCIDIUM HYBRID 'DESERT MUSEUM' | DESERT MUSEUM PALO VERDE | 13 | 36" |
| | CAE | CAESALPINIA CACALCO 'SMOOTHIE' | THORNLESS CASCALOTE | 11 | 36" |
| | ROB | ROBIGNIA I. 'PURPLE ROBE' | BLACK LOCUST TREE | 23 | 36" |
| | WF | WASHINGTONIA FLUFERA | CALIFORNIA FAN PALM | 6 | - |
| | AAC | AGAVE AMERICANA | CENTURY PLANT | 37 | 5 GAL |
| | AD | AGAVE DESMETTIANA | SMOOTH AGAVE | 30 | 5 GAL |
| | BF | BULBINE FRUTESCENS | BULBINE | 18 | 1 GAL |
| | CGP | CARSSA G. 'PROSTRATA' | PROSTRATE NATAL FLUM | 547 | 1 GAL |
| | DC | DALLEA CAPITATA | SIERRA GOLD | 59 | 1 GAL |
| | DG | DALLEA GREGGII | PROSTRATE INDIJO BUSH | 176 | 1 GAL |
| | HP | HESPERALOE PARVIFLORA | RED YUCCA | 459 | 1 GAL |
| | LF | LEUCOPHYLLUM FRUTESCENS | TEXAS RANCIER | 50 | 5 GAL |
| | LFL | LEUCOPHYLLUM LAEVIGATUM | CHIHUAHUA SAGE | 58 | 5 GAL |
| | MEA | MUHLENBERGIA LINDHEIMERI 'AUTUMN GLOW' | 'AUTUMN GLOW' TM. | 29 | 1 GAL |
| | MER | MUHLENBERGIA CAPILLARIS 'REGAL MIST' | 'REGAL MIST' TM. | 133 | 1 GAL |
| | NL | NOLINA LONGIFOLIA | MEXICAN GRASS TREE | 51 | 5 GAL |
| | OB | OPUNTIA BASILARIS | BEAVERTAIL CACTUS | 104 | 1 GAL |
| | RK | RUELLIA BRITTONIANA 'KATI' | BLUE DWARF RUELLIA | 489 | 1 GAL |
| | RUE | RUSSELLIA EQUISETIFORMIS | CORAL FOUNTAIN | 81 | 5 GAL |
| | TP | THEVETIA PERUVIANA | YELLOW OLEANDER | 188 | 5 GAL |
| | XCC | XYLOSMA CONGESTUM 'COMPACTA' | DWARF XYLOSMA | 15 | 5 GAL |
| | GRAVEL | 3/4" GRAVEL | TO BE PLACED IN ALL PLANTING AREAS | - | - |

Trees



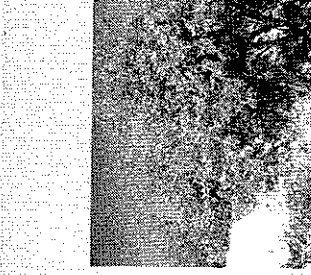
Acacia aneura
Mulga Acacia



Acacia willardiana
Palo Blanco



Cercidium x 'Desert Museum'
Desert Museum Palo Verde



Caesalpinia cacalaco 'Smoothie'
Thornless Cascatote

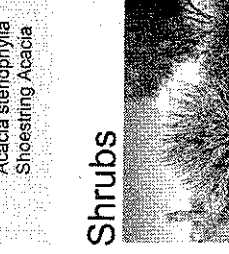


Robinia l. 'Purple Robe'
Black Locust

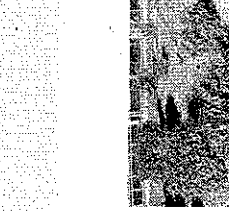
Palms



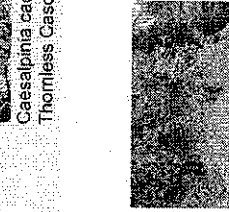
Washingtonia filifera
California Fan Palm



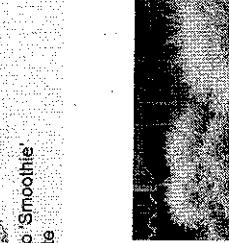
Leucophyllum laevigatum
Chihuahuan Sage



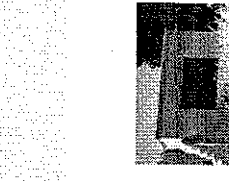
Xylosma c. compacta
Dwarf Xylosma



Russelia equisetiformis
Coral Fountain



Muhlenbergia capillaris
Regal Mist

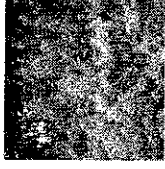


Muhlenbergia lindheimeri
Autumn Glow

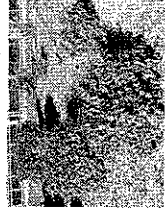
Shrubs



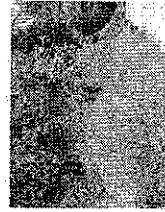
Thevetia peruviana
Yellow Thevetia



Dalea capitata
Sierra Gold



Hesperaloe parviflora
Red Yucca



Agave americana
Century Plant



Agave desmettiana
Smooth Agave



Nolina longifolia
Mexican Grass Tree



Bulbine frutescens
Bulbine

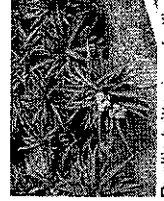
Accents



Opuntia basilaris
Beavertail Cactus



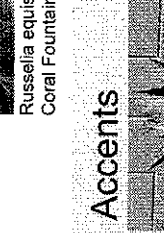
Carissa g. 'Prostrata'
Prostrate Natal Plum



Dalea greggii
Prostrate Indigo Bush



Ruella brittoniana katii
Blue Dwarf Ruella



Agave americana
Century Plant



Nolina longifolia
Mexican Grass Tree



Bulbine frutescens
Bulbine

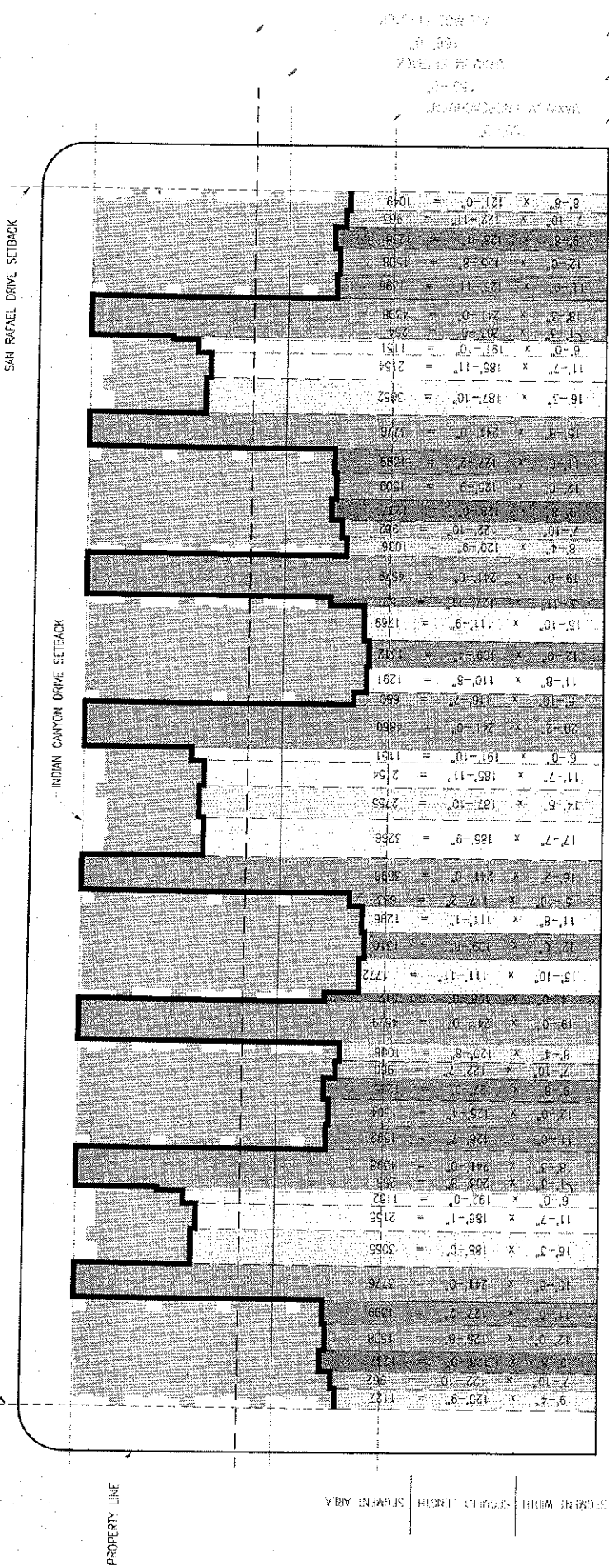
Indian Canyon
Palm Springs, CA

COMMUNITY DYNAMICS



Architecture+Planning
4733 Ocean Ave., Suite 250
Santa Monica, CA 90401
310.396.2623
11/27/03





TITLE: [unclear]
 DATE: [unclear]
 PROJECT: [unclear]
 SHEET: [unclear]

SAN RAFAEL DRIVE SETBACK

INDIAN CANYON DRIVE SETBACK

SIMANS ROAD SETBACK

PROPERTY LINE

SEGMENT WIDTH | SEGMENT LENGTH | SEGMENT AREA

OVERALL AVERAGE SITE SETBACK PROVIDED

TOTAL SEGMENT AREA / SITE WIDTH

$92545 / 567' - 6" = 166' - 0"$

166'-0"

- 240'-250'
- 200'-210'
- 190'-200'
- 180'-190'
- 120'-130'
- 110'-120'
- 100'-110'

Developer:
 ComDyn PS, LLC
 2800 28th Street, Suite 206
 Santa Monica, CA 90405

Indian Canyon
 Palm Springs, California

Average Site Setback Calculation

Architecture + Planning
 1733 Ocean Ave Ste 280
 Santa Monica, CA 90401
 310.394.2623
 aly.com