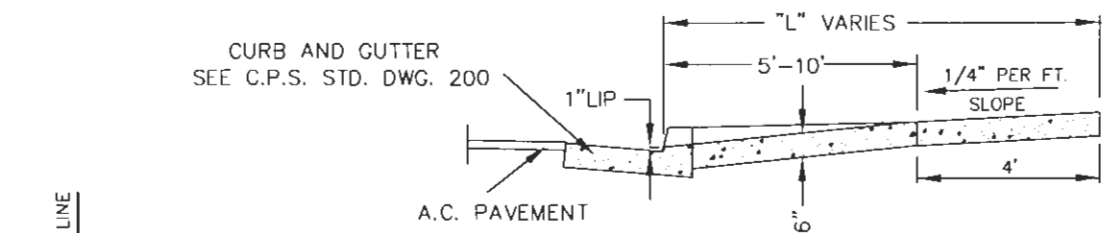
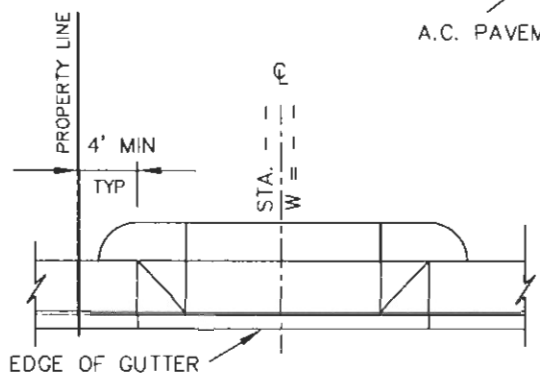


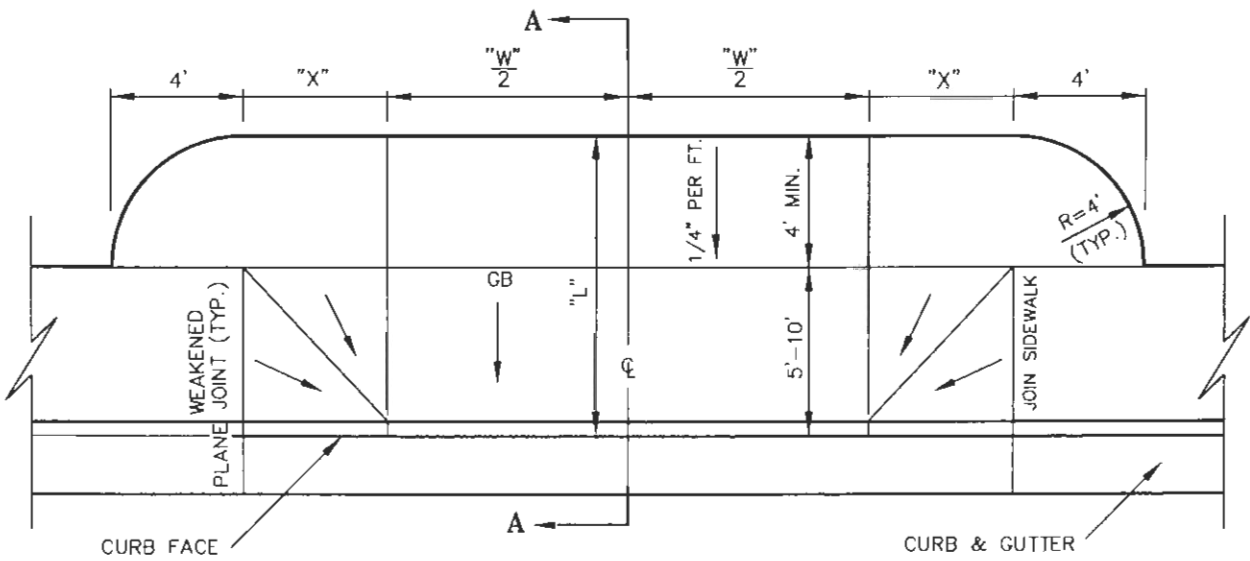
REVISIONS	APPROVED	DATE



SECTION A-A





SHOWN THUS ON PLAN



NOTES:

1. ALL DRIVEWAYS SHALL BE CONSTRUCTED WITH 6" THICK CLASS 560-C-3250 PORTLAND CEMENT CONCRETE
2. WEAKENED-PLANE JOINTS SHALL BE INSTALLED AT BOTH SIDES OF ALL DRIVEWAYS AND AT APPROXIMATELY 10' (MAX.) INTERVALS.
3. W = A MINIMUM OF 10' FOR RESIDENTIAL DRIVEWAYS AND 24' FOR ALL OTHER DRIVEWAYS.
4. X=4' WITH 6" CURBS AND 5' WITH 8" CURBS UNLESS OTHERWISE SHOWN ON PLANS.

CITY OF PALM SPRINGS PUBLIC WORKS & ENGINEERING DEPARTMENT STANDARD DRIVEWAY APPROACH	APPROVED: 	DATE: 
	CITY ENGINEER	28931 R.C.E.
DRAWN BY: G.F.F.	FILE NO. STANDARDS	
CHECKED BY: M.L.F.	DWG. NO. 201	